

The Duke Chronicle

Volume 55, Number 45

Duke University, Durham, N. C.

Friday, February 12, 1960

East, West Name Delegates To NC Mock Legislature

Twelve delegates and six alternates have been chosen from West Campus to attend the State Student Legislature at the Capitol in Raleigh March 10-12.

Seven delegates and four alternates from East are pending approval by Dean R. Florence Brinkley.

Bill Manson and Chuck Routh were chosen as delegates to the senate. Bill Alexander, George Autry, Steve Braswell, Sandy Levinson, Leonard Logan, Duke Marston, Tom Menaker, Will Redmond, Brian Theissen and Jerry Wilkinson will form the delegation to the house of representatives.

Henry Linsert is alternate delegate to the senate, while Tim Childs, Stewart Lowenthal, Arnold Parker, Ward Stevens and Mike Weir are alternates for the house of representatives.

The West delegation will have its first meeting February 22 to decide on the bills it will introduce in the legislature, said Autry, interim council member. Two bills, a primary one and a secondary one, are planned, he added.

"We will steer away from controversial bills such as those having to do with race relations and let the other schools bear the brunt of the controversy," he declared.

The East delegation will introduce one bill, said Miss Giavani, interim council member.

The mock assembly emulates Congress, drawing up, debating and "passing" legislation reflecting the views of the members on current affairs.

More than 25 colleges, both white and colored, are represented at the legislature. Each school presents one or more bills or resolutions dealing with both state and national affairs.

The controversy ridden legislature did not meet last year. After snow and sleet made NC roads impassable the scheduled meeting was post-poned.

Adds One New Charity

West's Campus Chest Campaign Increases Goal to \$3500, Shortens Drive by Two Days

This year's Campus Chest drive—with a goal of \$3500—will begin March 7 with a kickoff banquet.

Drive chairman John Bigger said that the campaign will last through Friday, March 11. The drive will last two days less than usual.

The \$3500 goal is \$500 above last year's which was barely reached, Bigger said.

Bigger justified the higher goal by pointing to 1958 when a \$3300 goal was successfully reached.

Student Union To Hold Interviews To Choose New Governing Board

The Student Union Board of Governors will hold interviews to select new members of the Board February 23 and 24 between 7 and 10 p.m. in 202-A Flowers.

Interviews are open to all undergraduate students who have a year's experience in the Student Union, Jerry Brammer, member of the Board of Governors, said Wednesday.

The Board of Governors is the policy-making body of Student Union with authority to appoint committee chairmen, set the budget, approve the program and enact policies concerning all phases of Student Union.



DISCUSSION OF PROTEST—Lacy Streeter, NCC student leader, and Warren Wickersham, MSGA President, met with the Senate members Thursday to discuss the sit-down strikes directed against the Woolworth and Kress stores. The Negroes, Streeter asserted, want "to receive service at counters like any other person." The Senate members expressed many views.

USIA's Religious Information Chief To Speak in Chapel Services Sunday

Dr. Elton Trueblood, chief of religious information for the United States Information Agency, will speak on "The Courage To Care" at the University Service of Worship Sunday.

A noted Quaker, Trueblood is professor of philosophy at Earlham College in Richmond, Indiana. He is also serving as a member of the board of directors of the Church Peace Union and of William Penn College.

Trueblood was chairman of the Friends World Committee for Consultation from 1947-52. He is the author of 17 volumes dealing with various aspects of Christian faith and philosophy, the latest being *Idea of a College*. He edited *The Friend* from 1935-46.

A native of Iowa, Trueblood served on the faculties of Haverford College, Harvard University and Stanford University before assuming his present position. He has received degrees from Harvard and Johns Hopkins.

Sit-Down Entering Negotiations Phase

Store Managers, NCC Student Leaders Meet with Human Relations Committee

By CURTIS MILES

The North Carolina College student government, through Durham Mayor E. J. Evans' Durham Human Relations Committee, is at present negotiating with the managers of both Kress and Woolworth for a settlement of the "sit-down strike" protest, it was revealed at a Senate meeting yesterday.

A proposal was read by president Warren Wickersham expressing sympathy with the movement, pleasure at the opening of negotiations, approval of the restraint shown by all concerned with the protest, and hope for a quick solution.

This and subsequent proposals were withdrawn due to the large number of views expressed by the Senate members.

Four Negro leaders of the movement appeared at a Senate meeting Wednesday by request of president Warren Wickersham.

The four, Lacy Streeter, Callis Brown, Nathan White and Maurice Word, all of whom are campus leaders at either NCC or Durham Business College, reported on various aspects of the sit-down strikes at Kress and Woolworth department stores.

Streeter offered the opinion that if negotiations failed and the strike continued, the managers might have the participants arrested for trespassing.

In a similar case in 1957, the North Carolina Supreme Court (Continued on page 4)

'Y' Objective Study To Assess Student Integration Opinion

An objective study conducted by a group representing student government and the campus 'Y' will help determine student attitude toward integration.

A questionnaire is being prepared which should bring the question of integration directly to each student, said committee member Chotsy Temple of the YWCA. This form should be ready sometime in April.

By adopting a purely neutral attitude we hope to obtain an objective picture of how University students really feel, she added.

Emphasizing the fact that the group was not pushing integration as such, she stated that the committee's entire objective was to feel out the prevalent attitude of the student body as a whole.

The group is also planning to send letters to colleges which have completed a program of integration, to discover what problems these schools had and how they overcame them. This, according to Miss Temple, is also meant solely to aid the University in arriving at a solution to the problem of integration.

Representing WSGA is Page Parsons, and Mel Thrash of the YMCA with Bob Alexander of MSGA complete the committee membership.

Well Over Half of Freshmen Complete First Round in Rush

IFC figures last night indicated that well over half the 755-man freshman class are participating in fraternity rush.

Tabulations made after the first two days of open houses showed 430 of 470 eligible men had made the complete 16-fraternity circuit or had visited the two Jewish fraternities.

IFC vice-president Jim Barton termed the turnout "surprisingly high," and better than in past years.

The rush schedule calls for another round of open houses Wednesday. Freshmen at this time will visit five fraternities of their choice.

The formal rush period will end Sunday, February 21 with invitational open houses.

Rushes tonight will embark on cabin parties and will continue chow-train activity. More parties are slated tomorrow afternoon and evening.

Bids go out February 22 with quiet hours beginning at 5 p.m. February 21.

Freshmen will return the bids between 1 and 4:30 Tuesday, February 23 in the Faculty Lounge located on the second floor of the Union near the Oak Room. Quiet hours end at 4:30 that day.

Inside the Chronicle

The Chronicle prints a two-year summary of fraternity leadership achievement p. 4
Feature writer Margaret Harrell takes a look inside the 44-year old East Campus Infirmary and at what the new Infirmary will offer p. 5



MEET THE BROTHERS—Tagged freshmen visit fraternity openhouses during the opening of formal rush Wednesday. Of the total freshman enrollment of 755, 470 men were eligible to participate. Only thirty of these did not choose to do so, making participation in the 1960 function the largest in years. Photo by TAT

The Editor of Campus
The Duke Chronicle
 Copyright and Sales

MARIAN L. SAPP
 Editor

FOUNDED IN 1905

AL M. BLACKBURN
 Business Manager

Lament for Lansing

At one time, *Lansing* was a regular and a fairly effective East Campus publication. It made its mysterious appearance on dormitory doors at least once a month and was the one mimeographed sheet that coeds read before consigning it to their circular files.

Lansing (when it was in print) was worth the efforts of its editor and the money of the WSGA treasury which supported it. Its functions were simple. It was to promote discussion of University issues and problems and to provide coeds with a means of forthrightly airing their controversial and critical views without the fear, however unjustified, of the imminent wrath of administrative officials, faculty members, and black-robed student government officers.

Sometimes, it is true, it failed to say anything meaningful. Coeds joked about the inevitable reminders that knitting and reading in assembly were in poor taste and that politeness was, after all, a desirable thing even if Emerson had said that it ruined conversation. At times it went overboard, but the resulting discussion and explanation were good.

Most of the time it was a responsible organ of student expression. There is no doubt that Council members looked forward to its appearance (One always gleefully anticipates a well-placed verbal aside even if it is usually aimed at one's own throat.), and it always brought forth comment in the dorms. It provided a stimulus for action, a frequently needed swift kick, and, now and then, a little praise.

Those of us who can remember what it once was can't help feeling a twinge of regret at its demise. We remember the rip-roaring attack on sororities in the middle of rush, the attack on the campus cops, the snide remarks about changing the name of the "College Assemblies" to "College Convoca-

tions." We can also remember when Lansing didn't appear for two months and then confronted a startled Association with a criticism of itself, its editor, and the newly-elected Council. Things had a way of being less than dull when *Lansing* was around.

Lansing has been in the process of dying for the past two years. Last year it appeared twice; this year, once. The ladies Lansing professed their undying interest in campus affairs, swore they would be true, responsible editors and would do everything ("simply everything") they could, but that next week they had an hour quiz and last week they had a cold.

WSGA Council had the right to remove the old editor and elect a new one. It has had opportunity to do so. Instead, it decided that two poor editors had been enough, that *Lansing* wasn't worth the bother of electing someone capable of making it the paper it should be, and that, after all, there is no need for students to feel suppressed by administrators, faculty members, or student government officials.

Pardon us, but we emphatically disagree. Ladies, your unanimous lack of logic is showing. SGA sponsorship of an anonymously edited paper does not imply that students have anything to fear in the way of post printing retribution. It merely says that SGA recognizes the fact that students do have that fear. Even if they didn't, they would be more inclined to state their honest and sometimes embarrassingly caustic opinions, if they didn't have to bear the stares of the criticized for the remainder of the college year.

WSGA Council can still reconsider its vote. That failing, a motion from the floor of the assembly is in order. Otherwise, kerplow!

Vox studentium! We're sorry to see it go.

an average, and dating regularly.

A fiery speech on the tense international situation has a negligible effect. Students feel that they can do nothing to solve problems, so why should they try?

Even though we recognize that the lack of interest is deeply rooted in the nature of our middle class way of life—where "want," "need," and "fear" have lost their significance—we must find a solution. We must be more than a people who live without praise or blame. We must not wait for a war or depression to destroy us.

If we continue only to vegetate, we may lose the world by default.

By Kevin Cunningham

1600 Organization Men



KEVIN

During the early part of the school year, after Kappa Alpha and Sigma Alpha Epsilon fraternities got into trouble with the Administration for breaches of the drinking rule, every fraternity on the campus was asked to meet with a committee of the Deans. These meetings were called by the Deans to impress upon the members of the fraternities that the ends of a fraternity are essentially the same as those of the University. These ends are, to further the intellectual and moral pursuits of the individual and to promote a sense of brotherhood and mutual responsibility. If, in addition, they present a program of entertainment, as important and admirable as this may be, it is subservient to their primary purpose, and if the fraternity seriously interferes with this purpose, there is no reason for its continued existence.

During the early part of the

year, also, pictures for *Chancellor* were taken, and the seniors filled out an information blank from which the biography of each would be compiled. This form listed over one hundred organizations to which the student could have belonged during his college career.

These two events, to the casual observer, may not seem connected, but a little

reflection will make our point quite evident. We compiled for this article a list of the major, essentially separate extracurricular activities in which students participate. There are over 225 entries on our list. Some, such as the East Campus dormitories and the fraternities have about fifteen officers, others, such as the *Handbook*, list only two. As an average we picked seven. We are, then, presented with the leaders of the Duke campus, all 1600 of them! This does not include any organization which is strictly remunerative, or the various committees, or the membership itself.

We are not going to suggest that extra-curriculars be abolished completely, since we recognize that they serve a necessary function in student life, but we are suggesting that the above-mentioned Dean's committee investigate all these activities as they have the fraternities and eliminate those which do not promote the aims of the University.

A few examples will show how out of perspective activities are. There are about 30 honorary fraternities. We seriously doubt that 25 percent of the student body have any idea as to what the criteria for admission or their ideals and goals are. Do you, for instance, know what these groups do: Kappa Chi, the Old Trinity Club, Delta Phi Rho Alpha, The Knights of St. Patrick, or Psi Chi Delta?

Why do we have an honorary for French and one for Spanish and then have both a French club and a Spanish club? Why are there three honoraries in the School of Engineering and then three organizations for students in each of the three disciplines?

The NROTC duplicates the rifle team, the drill team, the band, the newspaper, and the honorary of the AFROTC, but the latter is one up—they have a radio station.

What purpose does the *Who's Who Among Students in American Colleges and Universities* serve? Why should a line in the senior biography go to membership in an organization, admission to which is based solely on residence in Durham, when those of us from Astabula, Ohio, have no such club?

Does every class on East need a constitution? And how did people ever have successful marriages before the advent of Mrs. Nash? Finally, has anyone ever read the *Fortnightly Review*, and, if so, why?

(Continued on page 7)

By Dolph Adams

Southern Shintoism

Magnolias and moonlight, cotton and "corn likker," slaves and Slatterlys, balls and barbecues—it all went with the wind. Suddenly there were only Republicans and reconstruction, debts and defeat, free Negroes and Freedmen's Bureau. To be sure, the idyllic days were a truth for only a few and a hope for the others; but like



ADAMS

all hopes, it grew with time until everyone had shared in that very distant dream.

With the shattering of that hope came bitterness—the bitterness of dreams crumbled and pride humbled. At first, I am sure, it was a general, cold hatred; but with time it crystallized around two poles: Negroes and Republicans. The bitterness turned to hatred for and prejudice against those who had smashed the beautiful land of Dixie.

Thus "the religion" came to be—with its priests, rites, and taboos. The twin touchstones were prejudice against Negroes and prejudice against Republicans. Certainly, there were other parts to the religion—other prejudices existed and certain taboos were voiced, if not enforced. Family, tradition, and the history of the "glorious cause" were all deified. Yet they were not strictly worshipped, for they could be evaded, if one were discreet.

However, the central twin pillars were not to be taken so lightly. As with all the rest, they were inculcated from childhood; but there was never any levity in their pronouncement. It was almost the rite of adolescence to affirm them publicly, and one became a man when he could be trusted to uphold and enforce them. One might break other taboos without penalty, but not the inviolate two. The penalty for infraction was immediate and irrevocable ostracism from family and society.

This is our heritage as Southerners—this religion so aptly characterized by Hamilton Basso as "Shintoism in the South." Today, some say that the South is changing completely. Industry is welcomed and farming is on the wane. According to a recent U. S. Department of Commerce report, increases in nineteen

(Continued on page 7)

Uninterested Generation

During the vacation between semesters, forty students went to New York for a seminar on world affairs. Freed from their sheltered university environment, they were impressed with the utter seriousness of the world situation.

We would like to capitalize on the spirit of concern emanated by these students. It is a welcome relief to the general tone of unconcern here.

We are immediately impressed, however, with the depth of the problem. Students here feel no need for concern. They are probably the most secure group that has ever been here. They do not know what fear is. The only real problems are getting a car, maintaining

an average, and dating regularly.

A fiery speech on the tense international situation has a negligible effect. Students feel that they can do nothing to solve problems, so why should they try?

Even though we recognize that the lack of interest is deeply rooted in the nature of our middle class way of life—where "want," "need," and "fear" have lost their significance—we must find a solution. We must be more than a people who live without praise or blame. We must not wait for a war or depression to destroy us.

If we continue only to vegetate, we may lose the world by default.

Letters to the Editor

Blinded By Rights

Editor, the Chronicle:

Recently, East Campus, blinded by words such as "dignity," "rights," and "justice," passed a motion, giving their support to a vague, poorly defined cause. Inasmuch as I believe that many people acted without sufficient thought or information, I should like to give my personal beliefs about the matter.

Human right and dignity is not a gift to be received with no strings attached. It is an honor that carries with it more responsibility and demands on personal conduct than it gives benefit. Actually, this responsibility is its major benefit. This right cannot be won by sitting at a counter. It is clearly evident that whether or not an establishment gives in to the financial pressure incurred by

this mass protest will not make the standing of the Negro any higher or lower. The only thing it will prove is that a group of people can force their opinions on an individual by means of pressure. (A corporation is considered an individual under our present laws.)

Since this action can only result in the victory of so-called mass right over individual right, one must search deeper for underlying strains of antagonism, otherwise known as I'll-show-you-ism. I am not saying that this protest was not led with all due sincerity, but that most of the people involved either do not realize the full import of what they are doing or they are foolishly carried away by misused words of ideals—in which we all believe—that

lend some sense of validity to the "inspiring" oratory. In closing, I maintain that no one can ever gain justice by robbing another individual of it.

Sincerely,

Robertta Gay Williams

East Virginity

Editor, the Chronicle:

If Bill Kelly would spend less time at the movies and more time on East Campus, he would realize that we, at least, uphold his "ideal of feminine virginity"—regardless of Hollywood's sinful attempts to build a false image of woman that is diametrically opposed to what she was meant to be.

Sincerely,

Bette Garratt

ASSOCIATE EDITOR: JIM BROWN; MANAGING EDITOR: LEONARD PARQUE; ASSISTANT MANAGING EDITOR: DAVE SANFORD; FEATURE EDITOR: CINDY SMITH; NEWS EDITORS: ESTHER BOOS, SUE STRONG, WALT GILLELAND, GALEN GRIFFIN, ANNIE KOHN, ROBERT WINDELER; SPORTS EDITOR: JOE BOWLES; ASSISTANT SPORTS EDITORS: BILL DIXON, SNOWDEN HALL, MORRIS WILLIAMS; HEADLINE EDITOR: LINDA GARRETT; JIM PARKER; PHOTOGRAPHERS: MARTHA PIERCE, FRED GERKENS, ETOE SCHUSTER, JIM STOOPE; WSGA REPORTER: LIZ LENGYEL; REPORTERS: MARGARET HARRILL, MAL NATHANSON, CHARLES WATERS; COED BUSINESS MANAGER: MARTHA RIDGS; ADVERTISING MANAGER: JIM LIGHTBURN; OFFICE MANAGER: KARL SCHILLIG; ASSISTANT ADVERTISING MANAGER: DAVE GOODIE; BOB TYMES; MAILING CIRCULATION MANAGER: KENNY BROWN; CAMPUS CIRCULATION MANAGER: GORDIEY CULLEY.

Published every Monday, Wednesday, and Friday of the University year by the students of Duke University, Durham, North Carolina. Entered as second class matter at the Post Office at Durham, N. C., under the Act of March 8, 1889. Delivered by mail, \$4.00 for remainder of year; cost of postage to enrolled undergraduates not in residence on the campus. Subscriptions should be mailed to Box 4696, Duke Station.



EAST CONCERT TOMORROW—The Trio di Bolzano will appear tomorrow evening at 8:15 in East Duke Music Room under the sponsorship of the Chamber Arts Society. The trio includes (left to right) Sante Amadori, violoncello, Giannino Carpi, violin, and Nunzio Montanari, piano. Tickets will be sold at the door.

Trio di Bolzano Presents Chamber Music In East Duke Performance Tomorrow Night

Tickets for the Trio di Bolzano concert at 8:15 tomorrow night in the Music Room in East Duke Building will sell at the door for \$2 and \$2.50 a half hour before the concert.

Under the auspices of the Chamber Arts Society, the ensemble will present Beethoven's Trio in B Flat Major, Opus 97 ("The Archduke"); Trio in G Major, K. 564 by Mozart and Schumann's Trio in G Minor, Opus 110. Noted for its "bel canto" unit of line, the ensemble has won acclaim on its tours and in its recordings.

Formation of the Trio took place in 1953 when pianist Nunzio Montanari, violinist Giannino Carpi and cellist Sante

Amadori each gave up his individual career to devote his time to the ensemble. Previously, the artists had performed together on BBC in London. This will be the Trio's first appearance in Durham. They are currently touring the U. S.

Art Prints for Loan

Reproductions of major art works available for loan to students may be borrowed from 103 Asbury for the spring semester. Those wishing to borrow the pictures may contact Miss Barbara Stoughton in Asbury.

SUNDAY
BUFFET 2.75
All You Can Eat
See ad on page 5

CAROLINA
Now!
"Solomon and Sheba"
with
Yul Brynner and
Gina Lollobrigida

CENTER
"The Warrior &
'The Slave Girl"
coming . . .
"The Brumbe Bush"

QUADRANGLE
Saturday
Julie Harris
in
"I AM A CAMERA"

*Madras
Look
Worsteds*

... a bold new scheme endows our no-weight worsteds with the mystic patterns of an exotic culture. Here is the wanted "Madras Look" executed in worsted, enlightened to a mere six ounces. Never has worsted been so light, or envisioned in so bright a style idea.

35.00

Student Charge Accounts Invited

The Young Men's Shop
WEST MAIN STREET

DUKE'S MIXTURE

With hands sore from shaking, face muscles sore from smiling, and eyes sore from squinting at name tags—men on West prepare for the first cabin parties of the semester (and the first ones [period] for many frosh.) And for the first time this semester—every group is "swinging out" . . . bye-bye books!!!

The ATOs are partying at the Homestead Community Center in Chapel Hill (hereafter referred to as C.H.) to night and at the Tarheel Club in Raleigh with the Globes tomorrow night.

The Betas take off tonight for the American Legion at Lowes Grove and tomorrow night they're entertaining at Smith's Lake (a combo party)—with an openhouse tomorrow. Tonight the Delta Sigs go to the Tower—with the Carolina Gentlemen—and tomorrow night it's Aycoek's Cabin for their party.

The Deltas and co. tonight will be dancing to the Duke Jazz Quartette at the American Legion Hut, tomorrow to Les Setorius' Combo at Maultsby's and Sunday it's off to Turner's Cabin. The KAs

Smiles, Parties Symbolic of West Rush As Greeks Move To Impress Freshmen

By Patti Peyton

have both the Westwood Country Club and Blair Ellis' Combo reserved for tonight and tomorrow . . . when they'll watch the Duke-UNC game on T.V., fry hamburgers, and party.

The Kappa Sigs have a stag party on the agenda for tonight and a party at the Little White School House in C. H. tomorrow while the Lambda Chis have a stag party tonight and dance to the Downbeats of Rhythm tomorrow night at Durham's American Legion.

The Phi Deltas have the Hot Nuts Combo (!) again for their party at the American Legion in S. tomorrow night—while tonight it's the Trade Winds and Sunday the Saddle Club. Tomorrow night the Phi Psis go the Police Cabin, and then Sunday they're having an open house in their section with a combo.

The Phi Kaps go to Maultsby's tonight to party, to Do-

huns tomorrow night for T.V., supper, and a party with Big Joe Hatchett's combo, and Sunday to the chapter house at UNC for a party with the Carolina chapter. The Pi Kaps tomorrow go to Hartman's for a cabin party and tonight are partying in their section.

The SAEs are boarding a train, yes you read it right, and partying aboard it with a combo to Greensboro tonight—then tomorrow it's the Carolina Inn in C.H., for a dinner-dance and a section open house Sunday. Tonight the Sigma Chis go out to Smith's Lake for dinner and a cabin party, while tomorrow they party at the American Legion Hut in C.H.

The Sigma Nus have Nat Jones' Combo from NCC at the Braggtown Community Center tomorrow night, and the Globes'll be playing in (Continued on page 6)



A new
Shipment
of
Japanese
Prints on
Silk
Goes on sale
Tomorrow—

The Intimate Bookshop

119 E. Franklin St.
Chapel Hill
Open Till 10 P.M.

NOW

**OUTRAGEOUSLY LOW PRICES
ON RCA VICTOR STEREOs**

| | | |
|--------------------|----------------|--------|
| Reg. \$5 | Sale | \$2.98 |
| Reg. \$6 | Sale | \$3.49 |

Limited Time Only

**THE
RECORD BAR**

Member of
Piedmont Customer
Service

Corner of
Church & Parrish Sts.—Ph. 3-9981

ENGINEERING OPPORTUNITIES
for Seniors and Graduates in

PHYSICS
APPLIED MATHEMATICS
ENGINEERING MECHANICS
ENGINEERING PHYSICS
AND
AERONAUTICAL, CHEMICAL,
ELECTRICAL,
MECHANICAL,
METALLURGICAL,
and NUCLEAR
ENGINEERING

**CAMPUS
INTERVIEWS**

MONDAY, FEBRUARY 15

Appointments should be made in advance through your College Placement Office

PRATT & WHITNEY AIRCRAFT
Foremost designer and builder of all types of flight and space propulsion systems

| | No. Men in Group 1960 | No. Men in Group 1959 | Athletics | Drama, Po- reotics, Radio | Dep'tmental Honors | Leadership Honors | Scholarship Honors | Fields of Interest | Military | Instru- mental | Vocal | Publi- cations | Religious Groups | Service Groups | Student Govt. | Other | 1960 Totals | 1959 Totals |
|---------------------|--------------------------|--------------------------|-----------|------------------------------|-----------------------|----------------------|-----------------------|-----------------------|----------|-------------------|-------|-------------------|---------------------|-------------------|------------------|-------|----------------|----------------|
| TOTAL | 2393 | 2363 | 7 | 7 | 10 | 63 | 84 | 8 | 10 | 4 | 2 | 19 | 8 | 8 | 29 | 9 | 268 | 251 |
| FRESHMEN | 848* | 708 | — | — | — | — | — | — | — | — | — | — | — | — | — | — | — | — |
| INDEPENDENT | 650 | 757 | — | 2 | 3 | 12 | 42 | 7 | 4 | 2 | — | 4 | 4 | 2 | 5 | 1 | 88 | 74 |
| FRATERNITY | 895 | 898 | 7 | 5 | 7 | 51 | 42 | 1 | 6 | 2 | 2 | 15 | 4 | 6 | 24 | 8 | 180 | 177 |
| Alpha Tau Omega | 58 | 57 | 1 | — | — | 4 | 4 | — | — | — | — | — | — | — | 2 | — | 13 | 19 |
| Beta Theta Pi | 42 | 54 | — | 1 | — | 4 | — | — | — | — | — | 1 | — | — | 1 | 1 | 3 | 12 |
| Delta Sigma Phi | 51 | 37 | — | — | — | — | 2 | — | — | — | — | — | — | — | — | — | 2 | 12 |
| Delta Tau Delta | 61 | 64 | 2 | — | — | 5 | 1 | — | — | — | — | 4 | — | 1 | 2 | — | 15 | 14 |
| Kappa Alpha | 41 | 48 | 1 | — | — | — | 2 | — | — | — | — | — | — | — | 3 | 1 | 7 | 3 |
| Kappa Sigma | 41 | 35 | — | — | — | — | 1 | — | 1 | 1 | — | — | — | — | — | — | 2 | 4 |
| Lambda Chi Alpha | 60 | 52 | — | 1 | 1 | 4 | 5 | — | 1 | — | 1 | — | — | — | 1 | — | 14 | 3 |
| Phi Delta Theta | 72 | 74 | 1 | — | 1 | 11 | 4 | — | 1 | — | — | — | — | 3 | 7 | 1 | 29 | 23 |
| Phi Kappa Psi | 45 | 44 | 1 | 1 | 1 | 3 | 4 | — | — | — | — | 1 | — | — | 1 | — | 12 | 4 |
| Phi Kappa Sigma | 52 | 60 | — | — | — | 6 | 3 | — | 1 | — | — | 1 | — | — | 2 | 1 | 14 | 15 |
| Pi Kappa Alpha | 55 | 57 | — | — | — | — | 3 | — | — | — | — | — | 1 | 1 | — | 2 | 3 | 5 |
| Pi Kappa Phi | 49 | 50 | — | — | 1 | 5 | — | — | — | — | — | — | 1 | — | 1 | — | 13 | 18 |
| Sigma Alpha Epsilon | 51 | 49 | 1 | — | — | 1 | — | — | — | — | — | 2 | — | — | — | — | 4 | 12 |
| Sigma Chi | 63 | 56 | — | 1 | 1 | 3 | 2 | — | 2 | — | — | 2 | — | — | 1 | 1 | 13 | 5 |
| Sigma Nu | 49 | 51 | — | — | — | 4 | 3 | — | — | 1 | 1 | — | 2 | 1 | 2 | — | 14 | 6 |
| Sigma Phi Epsilon | 20 | 14 | — | — | 1 | — | — | — | — | — | — | — | — | — | — | — | 1 | 2 |
| Tau Epsilon Phi | 16 | 21 | — | 1 | — | — | — | — | — | — | — | — | 1 | — | — | — | 2 | 4 |
| Theta Chi | 25 | 28 | — | — | — | — | 1 | — | — | — | — | 1 | — | — | — | — | 2 | 8 |
| Zeta Beta Tau | 44 | 47 | — | — | 1 | 1 | 7 | — | — | — | — | 1 | — | — | 1 | 1 | 12 | 8 |

* Includes men who have not attained sophomore standing in their second year.

NCC Streeter Explains

Possible Trespass Charge Faces Striker

(Continued from page 1)
upheld a decision against four Negroes who were charged with trespassing when they failed to leave an ice cream parlor after being ordered to do so by the manager. Each was fined \$25.

The final aim of the protest is for Negroes "to receive service

at (food) counters like any other person," Streeter asserted. He went on to say that both the Ranch House restaurant and the Raleigh-Durham airport lunch counter have adopted a policy of serving Negroes without any apparent loss of trade.

Streeter emphasized that the protest was not initiated by any organization, but that it was immediately given the support of several groups and was later officially adopted by the NCC student government.

He also pointed out that NCC did not seek any support from the University or from any students here on other than an individual basis.

Max Heirich To Discuss Non-Violent Resistance

Max Heirich, regional secretary of the American Friend's service committee, will speak on non-violent resistance Sunday at 8 p.m. in the Music Room of East Duke building.

Heirich, speaking under sponsorship of the YM-YWCA race relations committee, will explain what non-violent resistance is. Chotsey Temple, chairman of the YW committee, explained last night.

There is no admission charge.

WRA Slates Volleyball, Bridge at Co-Rec Night

The Woman's Recreation Association invites all East and West students not involved in rush to Co-Rec night tonight in the East gym from 8 to 10.

Mixed volleyball and bridge are on tap for participants. Stags as well as couples are welcome, a WRA spokesman emphasized.

Co-Rec is a regular Friday feature of the WRA programming.

Greeks in Activities

The Chronicle, in an attempt to promote objective evaluation of fraternities, prints here the first of two charts surveying fraternity leadership and scholastic achievements.

Today's chart, compiled by the office of Dean of Men Robert Cox, summarizes fraternity leadership this year and last and compares independent and fraternity figures.

It denotes the total number of leadership positions held by members of each fraternity and the distribution of these leaders in campus activities.

Next week the Chronicle will print summaries of fraternity academic achievement last year and the year previous.

A Campus-to-Career Case History



Dick Petzold discusses time charges for a customer's telephone installation with an administrative assistant.

How to avoid a "dead end" career: read Dick Petzold's story

While a senior at the University of Maryland, accounting major Richard G. Petzold made some definite decisions about his future. "I wanted to work for an established company," he says, "but I didn't want to get lost in a 'dead end' job."

Dick joined the Chesapeake and Potomac Telephone Company in Washington, D. C., right after graduating in June, 1956. Following three months of orientation, he became a supervisor in Revenue Accounting, where he continued training in a productive capacity, with 15 people reporting to him. Here, he suggested a number of methods improvements which were adopted.

Far from a "dead end" career, Dick's took him into many operating areas:

- to General Accounting, where he handled market research projects, includ-

ing a Customer Opinion Survey for four Bell System companies...

- to Disbursements Accounting, for IBM-equipment training and, later on, the supervision of Payroll Deduction procedures...

- to Personnel Relations, where he coordinated a special, four-company "absentee" study and presented findings to an important, top-level conference...

- to Disbursements Accounting again, where he is now Supervisor, Labor and Material, with an administrative assistant and 10 clerks under his guidance.

"The telephone company brings out the best in you," says Dick. "I've developed new skills, acquired self-reliance, and learned how to supervise and work with people. What's the opposite of a 'dead end' career? Well, I've got it!"

Dick Petzold earned a B.S. degree in Accounting while in college. He's one of many young men with varied college backgrounds who are finding rewarding careers with the Bell Telephone Companies. Learn about opportunities for you. See the Bell interviewer when he visits your campus—and read the Bell Telephone booklet in your Placement Office.



BELL
TELEPHONE
COMPANIES

SPORT COATS



\$35

Palm Beach uses a zephyr-weight (3½ oz.) blend of Dacron and cotton to tailor these superbly fitted sports coats. The contour-cut collar, exclusively P.B., hugs the neck always... controls the natural shoulder line. In new plaids (madras-inspired), checks, muted stripes.



vanStraaten's

118 W. Main

113 W. Parrish

5000 Times Per Year

Out-, In-Patients Use East Infirmary

By MARGARET HARRELL

Every East Campus coed invariably pays a visit to the infirmary for services ranging from conferences to indoor confinement. Dr. Caroline Helmick, resident physician, and her nurses receive over 5,000 visits each year.

TWO SERVICES

"You have really two distinct services within the Student Health program on East," Dr. Helmick explained. "There is the outpatient—the student who gets hay fever shots or ultra-violet treatments for her acne and is allowed to return to her dorm. Then, there is the inpatient, who is admitted."

"As part of the outpatient service some 700 doctor-student conferences were given last year. I would say about 400 of them were forwarded to Duke University Clinic... The facilities of Duke Private Diagnostic Clinic are at our disposal, and we don't hesitate to send patients there."

Another outpatient service provides physical examinations for all new students, including transfers, all practice teachers, and students applying for jobs or just feeling ill. In addition, the doctor discusses with the girls their personal health problems.

5350 STUDENT VISITS

Of the 5350 students who visited the infirmary last year, about 570 (10 per cent) were admitted, thereby becoming inpatients. Medicine for the convalescents comes from the

University Hospital once a week.

Food is supplied by truck from the East Campus Union, is reheated, and then is sent upstairs on a four-shelfed dumb waiter. Dr. Helmick praised "the people who pack the food and get it here three times a day 240 days a year almost on the button. It is remarkable."

In the morning and afternoon, Dr. Helmick makes rounds of the sick rooms. Four times a day she has office hours for receiving patients and is on call all night.

OUT WITH THE OLD

Next year Dr. Helmick expects to find her job made easier with the facilities of a modern building replacing the present 44-year-old wood structure—originally former University President Kilgo's home.

"I think the first advantage will be an adequate number of beds," commented Dr. Helmick, thinking of the eight or ten additional beds to be in the new building, "and the second, I would say, will be having double and single rooms, which will make isolation of different types of ill-

nesses easier for us. Now, we can isolate them here, but they don't stay isolated. You know how it is upstairs—sort of social."

For still further separation, there will be a half-bath for every three beds, quite an advance over the present facilities.

NEW IDEAS

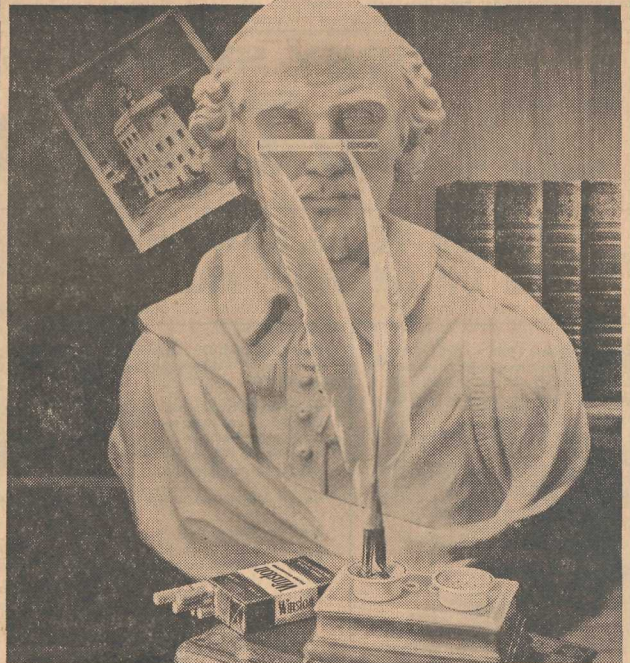
Besides the sleeping improvements, the tentative plans contain the lay-out of a recreation room, with television and radio at one end and a studying-reading-typing nook at the other. "The walls press in on you after being in bed a few days," the doctor explained.



PICTURE OF HEALTH—Dr. Caroline Helmick, resident physician in the East Campus infirmary, is rarely ill herself. Her around-the-clock job, treating every malady from a headache to mono—and appendicitis-like pains that "seem to always come in the middle of the night"—will soon be made easier in a modern infirmary.



But soft! What taste from yonder **FILTER-BLEND**...



IT'S WHAT'S UP FRONT THAT COUNTS

This filter, be it e'er so pure and white
Must needs give flavor too, full clear and bright
Else would the trusting smoker, filled with hope
Again be dashed, dejected be... and mope.

And thus we come to Winston's obvious truth
It's what's up front that counts—and 'tis, forsooth
In that the fine tobaccos, in the end
Are by exclusive process—Filter-Blend—
Become the tastiest taste that e'er hath played
Across your dancing taste-buds, man or maid!

Be ye not slow, therefore, to test the wit
Of what we say: that Winston, friend, is it;
For that with ev'ry smoke ye do delay
Ye are not gath'ring rosebuds while ye may!

"We are advertised by our loving friends..."

KING HENRY VI, PART III, ACT V, SC. III

R. J. REYNOLDS TOBACCO CO., WINSTON-SALEM, N. C.

Sunday Roundup Buffet
at the
RANCH HOUSE

A Sunday Night Feast
to Fill You for a Week
Rare Roast Beef and a
whole chuck wagon loaded
down with steaming chaf-
ing dishes and not-so-lazy
suzans.

All you can eat... it's a
cowpoke treat, buffet style.



Chapel Hill

"Recommended by Duncan Hines"

Positions with Potential

ENGINEERS • CHEMISTS • PHYSICISTS

Ceramic • Chemical

Electrical • Industrial • Mechanical

Metallurgical

National Carbon Company, America's foremost manufacturer of carbon and graphite electrodes and anodes, impervious graphite, brushes for motors and generators, dry cells and flashlights, are carbons and a wide variety of other industrial products, offers positions to qualified B.S. and M.S. graduates in the fields listed above.

Positions are available at National Carbon Company's 16 plants, located in the following states: Iowa, New York, North Carolina, Ohio, Tennessee, West Virginia and Vermont, and throughout the country in our sales organization.

Interesting, rewarding careers in research, process and product development, production and methods engineering, product and process control, machine development, plant engineering and sales. A National Carbon representative will be on campus —

Monday, February 15, 1960

NATIONAL CARBON COMPANY

Division of Union Carbide Corporation



Curtiss To Speak on Russian Travel Monday At First of Student Union Lecture Series

Professor John S. Curtiss, Russian history instructor, will speak on travel in Russia at the second of a series of European seminars, Monday at 4:30 p.m. in 201 Flowers.

The travel seminars, an annual service of the recreation committee of the Student Union, will present practical information for tourists, including bibliographies for reading, background material about European countries, and slides of sight-seeing points. A question-and-answer period will follow the talk.

Each Monday afternoon through March 14, a seminar will be conducted in Flowers. Curtiss is replacing Dr. Bronislav Jendierski, who was originally scheduled to speak.

Featured speakers for the following weeks include Senora Elias Torre, discussing Spain; professor Earl Mueller, speaking on Italy; and Professor Jens Brodersen, on Germany, Austria, and Switzerland. Professor George C. Schofield will conclude the series with a talk on Scandinavia.

Singing Groups To Hold New Auditions in Chapel

Tryouts for Men's Glee Club, Women's Glee Club, Chapel Choir and Chancel Singers will be held in the Chapel basement Monday from 11:30 a.m.-12:30 p.m. All interested singers should call 3898 for an appointment. Previous experience is not necessary.

Education Professor Heads Law Study

Dr. E. C. Bolmeier, professor of education, is the new president of the National Organization on Legal Problems of Education.

Bolmeier will assume the office at a meeting of the organization's executive committee in Atlantic City, New Jersey, Sunday. He will succeed Reynolds Seitz, dean of the Marquette University Law School.

The major goal of the organization, which has a membership of several hundred persons, is to better school administration by increasing the interest in and understanding of school law in this country, by stimulating the teaching of school law, by issuing publications on school law subjects, and by conducting meetings for the presentation and discussion of school law problems.

Cupid Prepares for Valentine's

(Continued from page 3) their section for an open house tomorrow. The Sig Eps go to Das Gasthaus tonight and tomorrow night make the trip to Greensboro for a dance at W. C.

Tomorrow night the TEPs have a party planned at Mayor Evans', and Sunday they're going to the Plantation at Greensboro (with Les Paul and Mary Ford as the floor show). The Theta Chis are crossing the Eno tonight for supper and party at O'Brian's and tomorrow will be at the American Legion at Lowes Grove—dancing to Wellington Black's Combo. The ZBTs have a stag party planned for tonight and a brunch Sunday morning.

Best of luck to you all in rush.

And now—'cause it's Valentine's Weekend (and how

Law Admissions Exams

The Educational Testing Service exams for fall admission to law schools will be given here February 20 and April 9.

Applications for the examination may be obtained from the Bureau of Testing and Guidance and must be completed before March 26 for the second test. Students planning to attend the University Law School must take the tests.

could you forget it with all the ads, store windows, and contemporary cards that replace the traditional message with tender words like "I'm sending you this Valentine so the postman won't think you don't have any friends.") let's get to the Romance section.

Anne Leinbach is pinned to SAE Rod Franz, Sally Trent to Bete Charlie Lucas, Sylvia Shearer to Lou Pease, Liz Moore to Lambda Chi Bucky Sykes, and Barbara Gagnon to Delta Sig Tom Prather. Holly Hicks is pinned to SAE Clay Pruitt, Ann Goodson to Sig Ep (State) Larry Faust, Ellen Cooper in Hanes to Rennie Law, Phi Psi, and Louise Winget to Neil Hudson (Phi Kap grad).

Also . . . Ralph Rau, Sigma Chi, is pinned to Diane Walker (N.Y.), Alan Quigley, Phi Psi, to Jackie Hendrix (W.C. in Greensboro), Lambda Chi Bill Tew to Jan Andress, Steve Gale, Phi Psi, to Miling Mirador (San Diego State College), and Connie Carlborg to Sigma Pi (State) Jim Hastings.

Then we have a number of engagements . . . Sue Morrow to Tom Douvers (Central Michigan College grad), Wanda West to Phi Kap grad Jim Linder, Janice Buell to ATO Bud Harris, Susan Peeler to Phi Kap Fred Ruben, and Cherry Dickson to Louis Woodbury (SAE, UNC grad).

Also Jean Armfield is engaged to KA Dwight Bumgarner, Judy Taylor to Bruce Clodfelter, Sigma Chi (State) grad, Ginny Shuford to Nick Palmer (DKE at UNC), Catherine Batten to Norman Bernes (Wake Forest Sem.) and Claudine Fields to Terry Carlton.

Since the last issue, there have been several marriages . . . Mary Frances Hart and Dr. William Peete of Duke Hospital, and Wendy Fenton and Paul Neilson. This weekend Nancy Fennell is marrying Carl Matheson (UNC) and Debbie Berney is marrying Roy Salomon, ZBT Duke grad. Congratulations!

Planes, Radio Control Units, Number Picture Sets, Plastic Models, One-Day Film Developing, H O Trains, Toys

Carolina Hobby Shop
Post Office Corner Phone 4-7721

LUCKY STRIKE presents

Dear Dr. Frood:

FROOD TELLS HOW TO CLEAN UP ON YOUR LAUNDRY

(see below)

Dear Dr. Frood: I told my girl I was in love, and she laughed. I told her I wanted to get married, and she laughed. How can I make her realize that I'm serious?

Serious



Dear Serious: Marry someone.

Dear Dr. Frood: I have been having trouble sleeping at night. Do you think it could be because I drink coffee?

Wide-Eyed

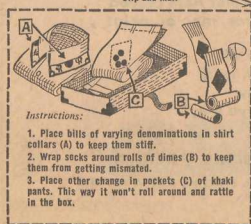
Dear Wide-Eyed: Possibly. It's very difficult to sleep while drinking coffee.

Dear Dr. Frood: A lot of the guys complain because their mothers don't pack their laundry boxes properly. Is there a certain way they should be packed?

Spokesman

Dear Spokesman: Indeed there is. Clip out the instructions below and mail them to your mother.

Clip and Mail



Dear Dr. Frood: Do you believe in the old adage, "Choose a girl by ear rather than by eye"?

Shopping

Dear Shopping: This maxim is indeed a fine guide for any young man who is looking for a girl. But while choosing by "ear rather than by eye," he should also make sure she has two of each.

~ ~ ~

Dear Dr. Frood: Every night I come home tired and I find the house in a mess. There are dirty dishes and pans in the sink, and clothes are thrown all around. I'm fed up. What should I do?

Married Student



Dear Married Student: You should notify the police. Someone has obviously been there.



Dr. Frood, Ph.T.T.

~ ~ ~

Dear Dr. Frood: How far ahead should I call for a date?

Straight Arrow

Dear Straight Arrow: It depends. Some girls must be called at least a week in advance. With others, you just holler as you enter the dorm.

~ ~ ~

Dear Dr. Frood: My husband is an absent-minded college professor. He went out 7 years ago to buy a pack of Luckies and hasn't returned yet. I don't know what to do.

Patience

Dear Patience: Better buy another pack. He's probably smoked them all by now.

COLLEGE STUDENTS SMOKE MORE LUCKIES THAN ANY OTHER REGULAR!

When it comes to choosing their regular smoke, college students head right for fine tobacco. Result: Lucky Strike tops every other regular sold. Lucky's taste beats all the rest because L.S./M.F.T.—Lucky Strike means fine tobacco.



TOBACCO AND TASTE TOO FINE TO FILTER!

Product of The American Tobacco Company—"Tobacco is our middle name"



WASH and WEAR GOLF JACKET by LONDON FOG

It's all the jacket you need! Water and wind repellent... wrinkle resistant. Tailored of Calibre Cloth, an exclusive super blend of Dacron and fine combed cotton. Unconditionally washable... drip-dries ready to go. With convertible English collar that buttons up for rough weather.

Colors: Olive, Natural, Tan and Ivory.

15.95



The Young Men's Shop
WEST MAIN ST

Southern Shintoism

(Continued from page 2) major categories by the South led the nation by percentages ranging from ten to one hundred ninety-six. We are even slowly desegregating our schools—albeit by coercion. Supposedly this adds up to a "new South."

Certainly this has changed the external appearance of the South. Old taboos and creeds have been swept away to be replaced by new ones. But if the edges of the temple have been altered and eroded, the twin pillars stand as firmly as ever. The recent election in Louisiana is a vivid reminder of the strength of segregationist feeling in the South today. The

election strength of Eisenhower (before Little Rock), which has been ascribed by some as a mitigation of anti-Republican sentiments, is best attributed to personal rather than party appeal.

If the temple pillars are as strong as ever, how can they be changed? Certainly external attacks will always fail, for those who do not give obeisance are not even worthy of being heard. This leaves palace revolution as the only remedy. Yet there are major obstacles to such a course. First, a man who has spent his life in belief, will not likely turn to disbelief and attack. Secondly, these are the mainstays of an entire society, which would crumble without their support.

Thus the South today is in an ambivalent position. It wishes progress and growth, as it avidly hopes for new sources of economic strength. Yet it is bound firmly to the past by the chains of its religion. There is seemingly no answer to this problem. It must be solved, however, if the South is ever to change greatly. A society that is so firmly shackled to the past can never progress.

Organizations

(Continued from page 2) Duke University is primarily an educational organization, and one of the leading ones in the country. Extra-curricular activities are necessary, and such things as sports and social functions have their place but why can we not take the lead in abolishing useless activities?

We would like to see the Administration look into this situation, and see if we cannot turn out some more informed, educated citizens, instead of mediocre, socially adjusted club women!



Like, You Know Man!
Let's Make the Scene—
Cool It On Down To

Franor Motors, Inc.
500 W. Morgan St.
Raleigh, N. C.

Franchised Dealers for:

- Alfa Romeo
- Austin-Healey
- MG A
- Sprite
- Triumph
- Hillman Minx
- Austin
- Sunbeam Rapier

SALES AND SERVICE
By Factory Trained Mechanics
Open Evenings Except Saturday

Pool Tourney on Tap In Union Tomorrow

A pocket billiards tournament tomorrow afternoon at 2 will determine a team of two finalists to participate in an intercollegiate tourney sponsored by the National Student Union.

The two finalists will play four 15-minute games under supervised conditions. Their score will be recorded and sent to the Student Union office at the University of Illinois.

The top ranking teams will be invited to a runoff at Purdue University in April. The results of this match will ultimately decide the National winners.

Includes Theater

Trustees Plan Duke Gardens Expansion

A master plan for the expansion of the Sarah P. Duke Gardens, calling for gradual development of the 55-acre area, has recently received approval of the University Trustees.

An open air theater suitable for the presentation of musical programs and plays will be installed as a major attraction of the gardens.

New plantings will include thousands of blossoming trees, shrubs and flowers. In addition, enlarged aquatic gardens, an oriental tea house and a duck

pond will gradually be added.

Work on the expansion will begin this winter and will not be complete for several years, according to Richard H. Fillmore, chief horticulturist. The improvements were planned by William B. S. Leong of Andover, Mass., a landscape architect.

Books Work Best At Valentines

I Love You, compiled and decorated by Oscar Berger. A new and handsome little gift for the loved one. Gay and tender. \$1.95

L'Amour—Just tailored for the somewhat cynic lover. A fine collection of epigrams and witticisms. \$1.00

Sonnets from the Portuguese, by Elizabeth Barrett Browning. The finest love poems written by a woman. We have it in a Peter Pauper dollar edition, and in a very handsome volume, with color illustrations, at \$2.95

This Is My Beloved, by Walter Benton. The gift for the practical minded. More unwary folk have been caught in love's snares while reading this book aloud than you could shake an admonitory finger at! \$3.50

L'Envoi
Whether love's just nibbling at you, or is a revening beast in your bosom, visit the undersigned mushy-hearted emporium. Our cards bring guaranteed results, and at a word pretty as your best girl's wink.

THE INTIMATE BOOKSHOP
119 East Franklin Street
Chapel Hill

Open Till 10 P.M.

EARN YOUR MASTER'S DEGREE

AND PREPARE FOR AN EXECUTIVE CAREER IN RETAILING

Comprehensive nine-month program for college graduates; emphasis on executive direction in major stores dovetailed with classroom work. Total pay for store work \$700. Co-ed. Scholarships. Selective job placement before graduation. G. I. approved. Next class, August 29, 1960. Apply now. Write for Bulletin C.

GRADUATE SCHOOL OF RETAILING
UNIVERSITY OF PITTSBURGH Pittsburgh 13, Pa.



Want
OUT
on big
car costs?

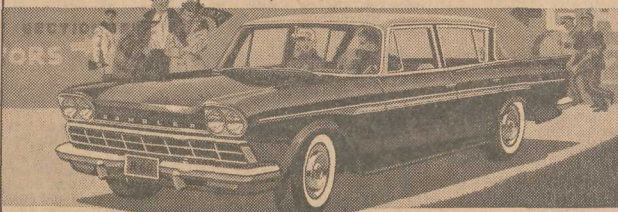


Can't get
IN new
small
cars?



GET THE BEST OF BOTH:
1. Big car room and comfort...
2. Small car economy and handling

Go Rambler for '60!



Smartest Rambler ever... beautifully new for '60! Save on price, gas, resale. Room for six 6-footers. Easier entry, exit. Easier to park. At your Rambler dealer's now—6 or V-8!

SEE THE NEW STANDARD OF BASIC EXCELLENCE



By Popular Demand! New for '60

100-inch wheelbase

RAMBLER AMERICAN 4-DOOR SEDAN

\$1844

Suggested delivered price at Kenosha, Wis., for 4-door deluxe sedan at left. State and local taxes, if any, automatic transmission and optional equipment, extra.

SEE YOUR NEARBY RAMBLER DEALER

LET US HELP YOU LEAD A CLEAN LIFE

Complete Laundry and
Dry Cleaning Service

EXTRA FAST SERVICE IF YOU ASK

Southern Dry Cleaners
& Laundry

756 Ninth Street, West Durham

Make
your
next
pipeful
AMPHORA

...the tobacco that outsells all other imported tobaccos combined! Try it and your very first puff will tell you why. There's more pleasure in smooth-smoking, even-burning, long-lasting, mild AMPHORA.

Popular priced, and more for your money, too—full 2 ounces in every pack! Blended in Holland, in handy pouches and tins. Come in and try it today!

(PRICE)



Blue Devils Seek Revenge Over Carolina

See Bowles' Column



by

Joe Bowles

Devils-Heels in Rematch

A bunch of revenge-minded Blue Devils will take the floor tomorrow afternoon in Carolina's Woolen Gymnasium bent on reversing the score when they last met the Tar Heels, back in the second round of the Dixie Classic.

On that occasion, the Blue Dukes found themselves a bit flat after a tremendous effort the night before in their upset of mighty Utah. They could not quite solve the zone defense thrown against them by Frank McGuire's Tar Heels, and went down to a 75-53 defeat.

The game wasn't that much a runaway, but in the final minutes, Bubas emptied his bench, while McGuire elected to keep his regulars on the floor until 1:25 remained on the clock.

Moe Will Be Dangerous

The Tar Heels will further be strengthened by the return of junior Doug Moe to the lineup. Moe is an extremely good mover for a big man (6-5), and is a fine all-around player, contributing as much on defense as he does on offense. He has just become eligible, after sitting out the first semester for scholastic irregularities. In addition to Moe, the men from Chapel Hill will have All-ACC Lee Shaffer and York Larese, averaging 18.8 and 16.8 respectively, Captain Harvey Salz, 12.8, and Ray Stanley at 9.8 points per game, in their starting lineup.

Outsiding Shooting Must Improve

The last three games have seemed to point out a weakness in the Blue Devil attack this season. First Wake Forest, then Navy and State managed to clog up the middle and close off high-scoring Carroll Youngkin with only two field goals in those three contests.

The outside shooters have been unable to take up the slack, and the Devils have suffered from their inability to hit from the outside. In the second half against State, John Cantwell and Captain Howard Hurt finally found the range, but it was too late. Our outside shooting must improve.



"STUMPS" — Sophomore guard John Cantwell has proved to be a standout reserve thus far for Coach Vic Bubas. "Stumps" stands 5-9 and weighs 180 and hails from Shawano, Wis.

Spring Football Drills Open for Blue Devils

Coach Bill Murray's 1960 Blue Devil football squad begins its 20-day spring practice officially tomorrow afternoon with a seasoned backfield but little experience up front.

Returning in the backfield are quarterbacks Don Altman, and Walt Rappold, halfbacks Joel Arrington, Jack Wilson and Dean Wright, and fullbacks Jerry McGee and "Red" Burch. The line will be led by ends Dwight Bumgarner, Tee Moorman, and Bob Spada, tackles Moose Bosson and Rod Kotchin, and guard Art Browning.

The Editor of Campus. Thought and Action

The Duke Chronicle

SPORTS EDITOR: Joe Bowles

Strong Battery Combos Feature Baseball Opening

Grunts and groans were distinguishable over the entire field as Assistant Coach Jim Bly sent his varsity baseball hopefuls through preliminary warmups. Practice opened Monday, while the freshmen are due February 29.

"It depends on how our sophomores come through," stated Coach Bly when asked about prospects for the season. With few lettersmen returning, the infield will contain three sophomores and the outfield at least one.

"We're strongest up the middle," continued Bly, with lettermen Art Browning, Dixon Owens, and Herky Keller competing for catcher while Butch Williams, Ron Kalish, and Fred Kast return to bolster the mound corps. Help in the pitching department is also anticipated from Don Altman, eligible for the first time.

Bly placed emphasis on the fact that almost every infield position is still open with third baseman Butch Allie's knee remaining a question mark. Hopefuls for positions are Lynn Fader, Gary Miller, Bob Rankin, Dean Macraehen and Moose Bosson. Outfield candidates include Bill Taylor, who saw action last year, Pete Moller, Rex McKinley and Jack Muller.

Bly asserted, "It's anyone's race in the ACC, but defending champs Clemson, and a strong

defensive Carolina squad look to be the teams to beat, with Wake Forest a strong dark horse.

No definite comment has come from head coach Ace Parker, who has been offered a three-year contract with pro football's New York Titans for almost a double in salary.

Lady Milton
Madras Medley



Exotic Far East fabrics from Madras India to Enhance Your Spring Wardrobe.
Popular box pleat skirt as shown\$17.95
Our own design sophisticated slipover with choir boy collar, as shown, solid oxford\$5.57
Unusual muted plaid bermuda length shorts\$10.95
Madras cummerbunds with nylon velcro\$4.00
Real good looking madras crotch ring belts at\$2.00
Milton's long called pullover button-down shirts with ¾ roll up sleeves, sale priced at\$8.99
Over 500 madras shirt dresses from \$19.95. Last, but by no means least, the best knit and smart looking blouses in madras plaids, with flap pockets and center vent, specially priced at\$19.95

Milton's
Clothing Cupboard
Downtown Chapel Hill

Blue Devil Cindermen Enter Tough Indoor Track Meets

By HENRY GOLDBERG

Spring track season is just around the corner, but Blue Devil cindermen have by no means been idle.

As Coach Al Bucher pointed out, "there is no break between Cross Country, the indoor season, and the outdoor season."

Last week, the Devils competed in the VMI relays in which they shattered two meet records. One of these was in the sprint medley with Tom Bazemore running the 440, Tom Menaker and Wain Barnes in the 220, and Cary Weisiger anchoring with the 880. Dave Jones, Barnes, Bazemore, and Weisiger composed the distance medley team. This

marked the third straight year that the Dukes have set records in the meet.

Bucher was impressed by the performance of the freshmen, making special mention of Tonnie Coane and Louis Van Dyke who finished second and fourth respectively in the three-quarter mile run. Bob Stephenson came through with a 6'2" high jump, good for fourth place.

Dave Sime, who is representing DUAA, developed leg trouble in winning the 70 yard dash at Washington, and will lay off the remainder of the indoor season. Sime, who has his goal to compete in the Olympic Games in Rome this summer, will start training in

earnest when he enters the Texas Relays early in March, and will eventually compete in the National AAU meet.

Weisiger has done well thus far, taking a fourth in the Millrose Mile in Madison Square Garden. He, Bazemore, Jones, and Jerry Nourse have entered the Philadelphia Enquirer meet as well as the New York AC two-mile relay Saturday.

Spring track will begin with the Florida Relays, and will include the West Texas and Penn Relays, plus the Big Four and Conference meets. All this should keep the thin-clads well occupied in the coming months.

Katharine Gibbs Memorial Scholarships

Full tuition for one year
plus \$500 cash grant

Open to senior women interested in business careers as assistants to administrators and executives.

Outstanding training. Information now available at the College Placement Bureau.

BOSTON 16, MASS. . . 21 Marlborough St.
NEW YORK 17, N. Y. . . 230 Park Ave.
MONTCLAIR, N. J. . . 33 Plymouth St.
PROVIDENCE 6, R. I. . . 155 Angell St.

KG

KATHARINE
GIBBS
SECRETARIAL

CHINESE FOOD

THE ORIENTAL RESTAURANT

Orders To Take Out 116 East Parrish Street
OPEN MONDAY THRU SUNDAY 11:00-2:30, 4:30-9:45 PHONE 8-7481

Phone 8-7286

ICE - ARENA

Open Every Day
Afternoon 2:00-5:00
Nite 7:00-10:00

We rent and sell skates . . .
Professional Instructors.
Anyone interested in amateur hockey contact us.
Special Rates To Groups
2 Miles West of Durham
On Highway 70



AT THE

Holiday Inn Tailor and Valet Shop

* ALTERATIONS
* PRESSING

* ONE DAY SERVICE
* FREE PARKING

Phone 3-7701

605 W. Chapel Hill St.

Durham, N. C.

Hours—7:00 to 7:00 Monday through Sat.

SPECIAL RATES
FOR
DUKE STUDENTS

