





This image shows a blank, aged, cream-colored page, likely an endpaper or flyleaf of a book. The paper has a slightly textured appearance with some minor creases and discoloration, characteristic of old paper. The left edge of the page is bound, showing the stitching and the inner cover material. There is no text or other markings on the page.











# SOCIETY

Mr. Kenneth "Jerry" Green, popular basketball director of intramural athletics, married Alice Ellen Jones of Norfolk, Virginia, at his bride's home on September 9. He and his bride are now settling their home at 2107 University drive.

Last week Margery Collins and Ray Booth announced their marriage. They are living in Durham.

On October 10 Miss Eleanor Hicks will marry Mack Stewart, who attended North Carolina State and is a member of Lambda Chi Alpha.

Phi Epsilon Pi plans a dance to be given October 13 in the Union ball room following the Georgia Tech game. A campus orchestra will be in charge.

Alpha Tau Omega members Knight Lairs, who has transferred to Duke from Washington and Lee, Mr. Lairs is a junior in the school of engineering.

John Kellum, who was editor of 1933 Chronicle, has returned to the Duke law school after spending a year at the University of Oklahoma. He is a member of Phi Kappa Psi.

Duke Tau Delta will give a dance October 12 in connection with the Homecoming celebration.

Bill Sippl has returned to school following a year's absence. He is a member of Phi Kappa Psi.

Duke Sigma Phi is refurbishing its chapter room.

Phi Kappa Psi announces the pledging of Duke Tau Delta. The pledging of Duke Tau Delta will be the return of John Baker, who has been out of school for a year.

Adrian Henley, of Phi Kappa Psi, married Mary Ann Gregory of Rocky Mount during the summer. He and his bride have settled in Rocky Mount, where he has secured a job.

Harvey White, Duke university tennis captain last year, is returning to school after a very successful summer. He is a member of Phi Kappa Psi.

Public Parks champion, champion of Washington, D. C., and he reached the final round in the national championship tournament held at Forest Hills, New York.

Interesting Summer Marriages Among Former Duke Students

During the summer months there were many marriages of interest to present Duke students. Among them were Marguerite Collins and Ray Booth, Susan Shepard and Connel Mack, Jr., Margery Bright and Walter Sherry, Ruth Bales and Paul Farmer, Francis Darden and Turner Foster, Mary Jane Tate and Kenneth Roberts, Arthur Clements and Joseph Maloney, Betty Russell and George Pughley, Nina Shields and Dave Putnam, Mary Hanes and Frank Ladd.

Howe Whitman and Robert Gerwin are to be married on October 26, and Kelly Williamson and Jack McQuirk on November 27. Isabelle Wamannaker and Jimmie Heiler and Eleanor Vidal and Bill Tucker are also to be married during October.

Duke Students Announce Engagements

Engagements that have been announced among Duke students are: Miss Sloan and Carl Sebeck, and Jane Pullen and Jack Lund.

Some Born in Former Duke Students

Proud parents among former students are Mr. and Mrs. Walter Hatt and Mr. and Mrs. John C. Williams, who have a new son, and Mr. and Mrs. John Coggins (the former Jean Marshall), who also have a newly-arrived son.

Allen Thompson Rabe teacher of singing, will be in Durham on Wednesday and Thursday of each week. Mr. Rabe has just returned from New York where she has again furthered her work with Stuart Ross and Frank LaFayette.

Audition arranged by appointment. Call 10722

Tennis Players?

Have your tennis racket resting with VICTOR "Strings That Win"

SOLD EXCLUSIVELY BY Caton-Collins Gut Crafters

Durham 4072, 98 Shepherd St. Phone 1472, North Carolina

Conservation gripped us when we were confronted by a lately arrived junior. "The dog show is closed," he barked. "I have to have a shirt, tie, and a pair of pants." (What a man!) We grunted thought and sympathizingly asked the usual question: "What kind, where, your taste?" He gave us a look that said, "I do you like attached collars?" Well we found out about the conservative taste of our upper-classmen.

It is surprising to see how well the combination of those two colors, brown and grey, have caught on in the wardrobe of the undergraduates. Especially, those men have definitely shown of the feminine-favored hue in regards to these two. So that explains the amazing popularity of old jackets and trousers torn in use around the campus.

"Gosh!" Quake, quick! "... some outfit" we yelled. This old happened while coming out of the Union. There in front of us was a freshman strutting along in all his glory. A pink tab collar shirt; a button of greenish hair; stacks of brown bread tooth checks; and a black jacket of some sort of velvet. The clothes were all right, but the combination was terrible.

Conservation gripped us when we were confronted by a lately arrived junior. "The dog show is closed," he barked. "I have to have a shirt, tie, and a pair of pants." (What a man!) We grunted thought and sympathizingly asked the usual question: "What kind, where, your taste?" He gave us a look that said, "I do you like attached collars?" Well we found out about the conservative taste of our upper-classmen.

Conservation gripped us when we were confronted by a lately arrived junior. "The dog show is closed," he barked. "I have to have a shirt, tie, and a pair of pants." (What a man!) We grunted thought and sympathizingly asked the usual question: "What kind, where, your taste?" He gave us a look that said, "I do you like attached collars?" Well we found out about the conservative taste of our upper-classmen.

Conservation gripped us when we were confronted by a lately arrived junior. "The dog show is closed," he barked. "I have to have a shirt, tie, and a pair of pants." (What a man!) We grunted thought and sympathizingly asked the usual question: "What kind, where, your taste?" He gave us a look that said, "I do you like attached collars?" Well we found out about the conservative taste of our upper-classmen.

Conservation gripped us when we were confronted by a lately arrived junior. "The dog show is closed," he barked. "I have to have a shirt, tie, and a pair of pants." (What a man!) We grunted thought and sympathizingly asked the usual question: "What kind, where, your taste?" He gave us a look that said, "I do you like attached collars?" Well we found out about the conservative taste of our upper-classmen.

Conservation gripped us when we were confronted by a lately arrived junior. "The dog show is closed," he barked. "I have to have a shirt, tie, and a pair of pants." (What a man!) We grunted thought and sympathizingly asked the usual question: "What kind, where, your taste?" He gave us a look that said, "I do you like attached collars?" Well we found out about the conservative taste of our upper-classmen.

Conservation gripped us when we were confronted by a lately arrived junior. "The dog show is closed," he barked. "I have to have a shirt, tie, and a pair of pants." (What a man!) We grunted thought and sympathizingly asked the usual question: "What kind, where, your taste?" He gave us a look that said, "I do you like attached collars?" Well we found out about the conservative taste of our upper-classmen.

## Social Committee Invites Student Recommendations

Requests For Late Permission Dances Must Be Filed in Dean Manchester's Office Before September 25; Regulations Announced

Campus organizations planning dances of the social committee are invited to submit their suggestions to the social committee. The committee will be held in the Dean Manchester's office before September 25. Regulations announced.

A social study of the committee will be held in the Dean Manchester's office before September 25. Regulations announced.

Before the first regular meeting of the social committee, a calendar of those dates in which the gymnasium on the East Campus will be closed to late functions will be delivered to the secretary of the committee by Miss Crowl.

If at any time during the year it becomes necessary to add other dates in which the gymnasium will be closed to late functions will be delivered to the secretary of the committee by Miss Crowl.

1. There shall be two regular meetings of the social committee, one during the school year, one during the last week of September and the other before the examination period in January. The chairman will call additional meetings if necessary.

2. All requests for late functions for the semester in question must be in the hands of the social committee at the time of its regular meeting. Applications may be filed with the secretary at all times prior to the meeting of the committee.

3. All requests for late functions for the semester in question must be in the hands of the social committee at the time of its regular meeting. Applications may be filed with the secretary at all times prior to the meeting of the committee.

4. All requests for late functions for the semester in question must be in the hands of the social committee at the time of its regular meeting. Applications may be filed with the secretary at all times prior to the meeting of the committee.

5. All requests for late functions for the semester in question must be in the hands of the social committee at the time of its regular meeting. Applications may be filed with the secretary at all times prior to the meeting of the committee.

6. All requests for late functions for the semester in question must be in the hands of the social committee at the time of its regular meeting. Applications may be filed with the secretary at all times prior to the meeting of the committee.

7. All requests for late functions for the semester in question must be in the hands of the social committee at the time of its regular meeting. Applications may be filed with the secretary at all times prior to the meeting of the committee.

8. All requests for late functions for the semester in question must be in the hands of the social committee at the time of its regular meeting. Applications may be filed with the secretary at all times prior to the meeting of the committee.

9. All requests for late functions for the semester in question must be in the hands of the social committee at the time of its regular meeting. Applications may be filed with the secretary at all times prior to the meeting of the committee.

10. All requests for late functions for the semester in question must be in the hands of the social committee at the time of its regular meeting. Applications may be filed with the secretary at all times prior to the meeting of the committee.

11. All requests for late functions for the semester in question must be in the hands of the social committee at the time of its regular meeting. Applications may be filed with the secretary at all times prior to the meeting of the committee.

12. All requests for late functions for the semester in question must be in the hands of the social committee at the time of its regular meeting. Applications may be filed with the secretary at all times prior to the meeting of the committee.

13. All requests for late functions for the semester in question must be in the hands of the social committee at the time of its regular meeting. Applications may be filed with the secretary at all times prior to the meeting of the committee.

14. All requests for late functions for the semester in question must be in the hands of the social committee at the time of its regular meeting. Applications may be filed with the secretary at all times prior to the meeting of the committee.

15. All requests for late functions for the semester in question must be in the hands of the social committee at the time of its regular meeting. Applications may be filed with the secretary at all times prior to the meeting of the committee.

16. All requests for late functions for the semester in question must be in the hands of the social committee at the time of its regular meeting. Applications may be filed with the secretary at all times prior to the meeting of the committee.

17. All requests for late functions for the semester in question must be in the hands of the social committee at the time of its regular meeting. Applications may be filed with the secretary at all times prior to the meeting of the committee.

18. All requests for late functions for the semester in question must be in the hands of the social committee at the time of its regular meeting. Applications may be filed with the secretary at all times prior to the meeting of the committee.

19. All requests for late functions for the semester in question must be in the hands of the social committee at the time of its regular meeting. Applications may be filed with the secretary at all times prior to the meeting of the committee.

20. All requests for late functions for the semester in question must be in the hands of the social committee at the time of its regular meeting. Applications may be filed with the secretary at all times prior to the meeting of the committee.

21. All requests for late functions for the semester in question must be in the hands of the social committee at the time of its regular meeting. Applications may be filed with the secretary at all times prior to the meeting of the committee.

22. All requests for late functions for the semester in question must be in the hands of the social committee at the time of its regular meeting. Applications may be filed with the secretary at all times prior to the meeting of the committee.

23. All requests for late functions for the semester in question must be in the hands of the social committee at the time of its regular meeting. Applications may be filed with the secretary at all times prior to the meeting of the committee.

24. All requests for late functions for the semester in question must be in the hands of the social committee at the time of its regular meeting. Applications may be filed with the secretary at all times prior to the meeting of the committee.

25. All requests for late functions for the semester in question must be in the hands of the social committee at the time of its regular meeting. Applications may be filed with the secretary at all times prior to the meeting of the committee.

26. All requests for late functions for the semester in question must be in the hands of the social committee at the time of its regular meeting. Applications may be filed with the secretary at all times prior to the meeting of the committee.

27. All requests for late functions for the semester in question must be in the hands of the social committee at the time of its regular meeting. Applications may be filed with the secretary at all times prior to the meeting of the committee.

28. All requests for late functions for the semester in question must be in the hands of the social committee at the time of its regular meeting. Applications may be filed with the secretary at all times prior to the meeting of the committee.

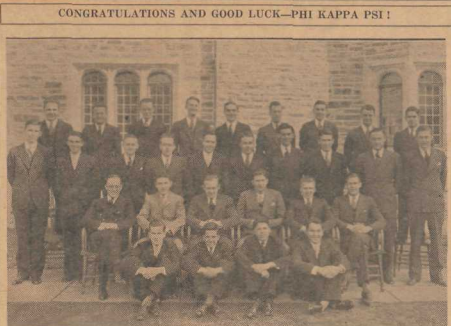
29. All requests for late functions for the semester in question must be in the hands of the social committee at the time of its regular meeting. Applications may be filed with the secretary at all times prior to the meeting of the committee.

30. All requests for late functions for the semester in question must be in the hands of the social committee at the time of its regular meeting. Applications may be filed with the secretary at all times prior to the meeting of the committee.

31. All requests for late functions for the semester in question must be in the hands of the social committee at the time of its regular meeting. Applications may be filed with the secretary at all times prior to the meeting of the committee.

32. All requests for late functions for the semester in question must be in the hands of the social committee at the time of its regular meeting. Applications may be filed with the secretary at all times prior to the meeting of the committee.

33. All requests for late functions for the semester in question must be in the hands of the social committee at the time of its regular meeting. Applications may be filed with the secretary at all times prior to the meeting of the committee.



The local chapter of Sigma Delta, who petition to Phi Psi was formally accepted this summer at the annual national convention at Mackinac Island, Michigan. Installation of the new chapter is tentatively set for November. With the addition of Phi Psi, the number of national fraternity chapters at Duke reaches fourteen. (Missing from photograph: James Allardice, Shelby Dale, David Golds.)

## Sigma Delta Receives Phi Kappa Psi Charter

At the regular business convention of Phi Kappa Psi, the governing body of Phi Kappa Psi returned favorable action upon Sigma Delta's formal petition, asserting the strong Duke local chapter.

The following undergraduate members of Sigma Delta will be initiated into Phi Kappa Psi at the coming installation ceremony: James Allardice, Richard Behrman, Robert Bailey, Charles Baker, Richard Beasley, Theodore Beppie, William Beppie, Blaine Carnahan, Shelby Dale, Howard Eastwood, Russell Forrest, Larry Gunt, Howard Hets, David Golds, Henry Haystack, James Henry, Richard Johnson, Frederick Laiter, O. D. Newton, John Ross, Jos.

Sigma Delta was founded in the spring of 1929 with the idea in mind that the members, kept closely in touch with one another during the summer in order that the ties of friendship be preserved. In the fall of 1929 the organization was established on a more permanent basis in lodging the drawing up of a constitution under the late Dean Allardice's guidance.

During 1929 three national fraternities offered Sigma Delta charters. Two of them were refused and the Pan-Hellenic Council blocked the third due to the fact that the national fraternity offering the charter was very young at the time.

In the spring of 1931 Sigma Delta began work toward securing a Phi Kappa Psi charter. An informal petition was sent to the Grand Arch Council, which is the governing body of Phi Kappa Psi, signifying Sigma Delta's intention of following formalities later on. During June, 1931, Sigma Delta petitioned formally before the Grand Arch Council which was holding its business convention at Mackinac Island, Michigan. The petition was acted on favorably. When Sigma Delta is taken in, it will be the fifty-third active chapter.

Founded in 1852 Phi Kappa Psi had its first chapter at Jefferson College, which later became part of Washington and Jefferson, in 1852. The first chapter was very precarious position during the Civil War owing to the extinction of all the southern chapters and the fact that over two-thirds of the members were fighting. After the Civil War great uncertainty existed. The fraternity, however, began to expand.

Having landed here last week, he is all set to bring over a band (young men) to campus, he has no set combination but trains a "pick-up outfit" in his style) and will get a hotel job in Canada and broadcast from there using all those small-time wise-guys. So get set to hear Sigma Delta's smartest and most advanced "pick-up" outfit—composer—pianist—etc.—etc. broadcast his own compositions ("The Very Thought of You," "Love Looked Out," "Love is the Sweetest Thing," etc.) for your delectation and delight. Indecently, Noble started an index of tape-recorded English-Indian-ware—Jack Hylton, Ray Fox, Ambrosio, America—all just "looking the situation over."

With the flag flying high and day on the East Campus, as the Columbia goes to press, it would seem that the Women's college patriotism is running over.

The usual custom in America is "never to let the sun set on our flag." Some colleges have the lowering committees to uphold this honored practice.

With the flag flying high and day on the East Campus, as the Columbia goes to press, it would seem that the Women's college patriotism is running over.

The usual custom in America is "never to let the sun set on our flag." Some colleges have the lowering committees to uphold this honored practice.

With the flag flying high and day on the East Campus, as the Columbia goes to press, it would seem that the Women's college patriotism is running over.

The usual custom in America is "never to let the sun set on our flag." Some colleges have the lowering committees to uphold this honored practice.

With the flag flying high and day on the East Campus, as the Columbia goes to press, it would seem that the Women's college patriotism is running over.

The usual custom in America is "never to let the sun set on our flag." Some colleges have the lowering committees to uphold this honored practice.

With the flag flying high and day on the East Campus, as the Columbia goes to press, it would seem that the Women's college patriotism is running over.

The usual custom in America is "never to let the sun set on our flag." Some colleges have the lowering committees to uphold this honored practice.

With the flag flying high and day on the East Campus, as the Columbia goes to press, it would seem that the Women's college patriotism is running over.

The usual custom in America is "never to let the sun set on our flag." Some colleges have the lowering committees to uphold this honored practice.

With the flag flying high and day on the East Campus, as the Columbia goes to press, it would seem that the Women's college patriotism is running over.

The usual custom in America is "never to let the sun set on our flag." Some colleges have the lowering committees to uphold this honored practice.

With the flag flying high and day on the East Campus, as the Columbia goes to press, it would seem that the Women's college patriotism is running over.

The usual custom in America is "never to let the sun set on our flag." Some colleges have the lowering committees to uphold this honored practice.

With the flag flying high and day on the East Campus, as the Columbia goes to press, it would seem that the Women's college patriotism is running over.

The usual custom in America is "never to let the sun set on our flag." Some colleges have the lowering committees to uphold this honored practice.

With the flag flying high and day on the East Campus, as the Columbia goes to press, it would seem that the Women's college patriotism is running over.

The usual custom in America is "never to let the sun set on our flag." Some colleges have the lowering committees to uphold this honored practice.

With the flag flying high and day on the East Campus, as the Columbia goes to press, it would seem that the Women's college patriotism is running over.

The usual custom in America is "never to let the sun set on our flag." Some colleges have the lowering committees to uphold this honored practice.

PUNCHES

Fast-From

"Blue Ribbon Ice Cream"

Durham Ice Cream Company

We Make any Color Ice Cream for Fraternity and Sorority Banquets

PHONE: Dial L-563

MAIN AT DUKE

Made With Pure Cream

FANCY ICES

BLACK CREAM

Duke University Unions

EAST CAMPUS

WEST CAMPUS

Operated by Duke University for the Convenience of All Students

Any suggestions for improvement in service and meals appreciated.

J. E. THOMPSON, '28, Manager

Foreign!

National!

State!

Local!

AND

DUKE NEWS!

THE YOUNG MEN'S SHOP

120-124 E. Main Street

DUKE'S SHOPPING CENTER FOR MEN

Inviting DUKE Students!

On your first visit "down-town," you are invited to come in to our store—inspect its bright cases—see and enjoy our new stock of college student supplies—and accessories.

Thomas-Quicke! Company is the Meeting Place For All Collegians in Durham.

"Come In And Browse"

Hundreds of the newest books and popular copyrights.

Many city articles to make your room more attractive.

Underwood Typewriters—used and rebuilt in wooden, secretarial, and noisless models.

In Every Particular—a Student Store

The Thomas-Quicke! Co.

To The GIRLS

OF DUKE UNIVERSITY WHO VALUE SMART AND DISTINCTIVE BEAUTY SERVICE—

WE GREET YOU

North Carolina's Largest Beauty Shop—14 private booths—14 talented operators—2 haircutters.

Make the Mayfair headquarters for all your beauty needs.

You will be delighted with the privacy, courtesy and comfort.

OUR PRICES ARE RIGHT

SPECIAL Charge Accounts to Duke Girls

OUR WORK IS BETTER

The Mayfair Beauty Shoppe

BALDWIN'S DEPT. STORE

Phone 5-3481



# THE DUKE CHRONICLE

## WITH THE BLUE DEVILS

DICK PIPER, Sports Editor

DURHAM is going to try to outdo Duke on October 13! Town clubs of the local metropolis are planning gala celebrations on the "red letter" day when Tech comes to town, and the expansive program Durham has planned threatens to surpass Duke's Homecoming Day festivities.

It will be a big day in which this tobacco town will have its name in many papers and Durham intends to do well by its name. Pre-game sales of reserved seats have reached a peak never before attained as far as sales go at the stadium; with this high number of seats already gone the point is indicated that the Georgia Tech-Duke fracas will be one of the high spots in both color and crowd for southern football this year, and that it will attract the multitudes like the Georgia-Yale contest did when they played in Athens in 1922. Hotel managers further promise a great crowd because the hotels are selling reservations fast.

### But the Spirit Must Be Supplied by Duke!

WE MUST furnish the fireworks to the celebration, touch off the spark that will make the entire day a blazing success. By fireworks it is meant the proper sort of school spirit, the kind everyone in the university displayed last fall when we played Tennessee. That spirit helped kindle the light that enabled the Blue Devils to win.

It is altogether too easy to support a winning team, so an admissible college spirit comes to the attention of outsiders at a school when the student body supports a losing team. Rarely does Duke back a losing squad, and it's a safe bet to wager that we won't this fall; they rarely do we get a chance to show our best sportsmanship.

Year before last, when the previous juniors were broke, the university was still in the process of building and the spirit was not strong. It was cold, efficient. To the class of '32 must be given the credit for making the realization of a true Blue Devil spirit. They conceived the idea of stringing out pennants and hanging flags of the rival during the week before the big contest fall, and it was because of this "perk" that many "pop" meetings and parades were started—because that class was the first to really realize it.

It is the class of '34 that to increase Duke's sportsmanship and spirit as much as twenty-five per cent? If so then the Duke spirit will continue on the upgrade through successive freshman classes. Then to this year's freshmen falls the task of creating an ideal spirit among your selves and trying to make it better than that shown by your sophomore "peaks".

### The Big Leagues Are Coming to Town

PRIMED from a full season's competition in the big leagues, 22 National and American league players and five baseballers from the minors are going to invade Durham on October 13 to show North Carolina how baseball should be played.

An illustrious staff of fingers is to be found on each nine, featuring Albin "Gene" Crowder, Norfolk, Va., Wes Ferrell, Buck Newsum, and the "Old Fox," Herley Pennock. Receiving for these days will be Wes Ferrell's brother from the Red Sox, Rick Ferrell, Boston, Harvard, and Delaney, of the Cards.

Returning to their old grounds are Bill Werber, Duke grad, Freddie Shington, ex-coach here, and Duely Cooke, who got his start in baseball with the Durham Bulls. Werber has been the sensation of the Red Sox, this summer with his heavy stickwork and versatile fielding. Following are the team lineups:

Red Sox—R. Ferrell (Red Sox), Bolton (Washington), catcher; W. Ferrell (Red Sox), Newsum (Brooklyn), Pennock (Red Sox), pitcher; Alexander (Newark), first base; Bishop (White Sox), second base; Young (Washington), shortstop; Werber (Red Sox), third base; Cooke (Red Sox), left field; Chapman (Yankees), centerfield; Walker (Yankees), right field; G. Ferrell (Aberdeen), utility.

Braves—Haywood (Detroit), Delaney (Cards), catcher; Crowder (Detroit), Ferrell (Detroit), Weaver (Washington), pitcher; Crowder (Braves), first base; Crawford (Cards), second base; Whitehead (Cards), shortstop; Riggs (Cards), third base; Shington (Aberdeen), left field; Harle (Washington), center field; English (Portland, Oregon), right field; Ferrell, R., utility.

## Nobody is on Strike at Duke

We form a community, almost unique just now in that we are not touched by the present nation-wide strike—a community of thirty-five hundred consumers—a market picked from the class whose purchasing power is greatest.

If this was an advertisement by a Durham merchant, think how much it might mean to him.

ADVERTISE IN

THE DUKE CHRONICLE

## NINE SOUTHERN SQUADS AIM AT WADE'S ELEVEN

Every Opponent "Pointing" Towards its Game With Duke Varsity

Schedule Calls For Head-up Ball If Duke Is to Retain Titles

Nine southern football teams which are united in purpose will provide the Blue Devil gridlers with plenty of head-on competition during the 1934 season. Duke has been called the "team to beat in the South", and Duke's opponents each hope to do just that.

The Warriors were ranked higher in the national rating for 1933 than were any of this year's opponents. Such a record serves only to make each school try harder to oust the Blue and White from its enviable position. The Red warriors must play breakaway ball to be ranked at more than an even bet in most of their games.

V. I. is expected to offer determined competition with a wide open game designed to give their all before the Duke "ons" realize the strength the Flying Squadron possesses. Such a record serves only to make each school try harder to oust the Blue and White from its enviable position. The Red warriors must play breakaway ball to be ranked at more than an even bet in most of their games.

Common which failed in getting going properly last year will provide the dark horse matchup in Fayetteville's first home game. Coach Neely has a real running back in Henry Woodward whose injuries crippled last year. The South Carolina Tigers do not need much of a break to make a real man-eating romp against any of its rivals. Unless Georgia Tech manages them badly on the Saturday previous to the Duke encounter, Clemson's prospects look good.

October 14th is expected to be a good game for somebody. Both Georgia Tech and Duke have given our opinion as to who the unfortunate ones will be. The real unfortunate ones will be those people who miss the game. Predictions mean less than ever for it will be one of the games that don't die till they are over.

Durham will present James Mackwell, stellar halfback, behind a stubborn line. Needless to say, Duke must pick up quickly after the Georgia Tech game to meet the Wildcats who will have rested for two weeks previous to the Duke game.

On the last Saturday in October the Featherless Tennessee team will play host to Duke at Knoxville. Nobody will replace the all-American Peabody, but a sophomore, Phil Dickens, is supposed to make the partner less noticeable. Although the Vols lost eight regulars by graduation, Coach Neyland will have an unusually speedy outfit representing the Orange and White.

Auburn seems to possess the darkest horse in the field. The team will be mostly sophomores who must play a tough schedule but who will be tough enough themselves to give their overconfident opponents a good beating.

The Blue Devils' last three games will be against first opposition, Wake. (Continued on page eight)

## WATCH CORKY STEP!



Although not quite as successful in dueling as a dog, Corky's training by Ralph McElwain of Washington, gained the runner-up title, losing the first round of the same tournament by William Thompson, Brooklyn, 4-3, 5-7, 6-1, 6-2.



"As this boy goes on Duke?" And in latest practice sessions Corky has been "going" places, mostly by virtue of his powerful, griping drive.

## Imps Challenge Varsity On Gridiron Tomorrow

Fresh Progress Rapidly During Week; Expected to Offer Stern Opposition

Just a little more than one week ago today ninety freshmen reported to Coach Caldwell for the first gridiron practice of the year. Since that time they have progressed rapidly and tomorrow afternoon will find their first scheduled game against the varsity in the same tournament by William Thompson, Brooklyn, 4-3, 5-7, 6-1, 6-2.

While so tentative line-up has been asked as yet, Coach Caldwell has had three teams drilling daily under his personal supervision. It is fairly safe to say that the first string lineup will be picked from one of these three teams. This lineup will be given out until after they played their first scheduled game against Oak Ridge the 26th of this month.

Although the varsity are the temporary favorites to walk away with the championship's battle, the freshman pack plenty of potential power and will no doubt give them a good run for their money.

The freshmen out for football are as follows: Baggett, Bennett, Bence, Bowers, Bradford, Bradford, Brown, Cannon, Carpenter, Biss, Clifton, Clark, Cook.

## BARNEY WELSH WINS MID-WEST PARKS TOURNEY

Blue Devil Excaptain Is 1934 National Public Parks Champ

PLAYED IN NATIONALS Goes to Third Round at Forest Hills Before Losing to Raliville

On August 18, Duke tennis team's number one, a victim named against Arnold Simons, 1933 winner of the national public parks tournament, and defeated last year's victor to set the 1934 event upon its own head.

The national public parks tourney, this season played at Minneapolis, was won by Barney Welsh, captain for two years of the Blue Devil tennis squad, as he overcame his own four ranking in this annual competition to take the title.

Barney, who hails from Rockville, Maryland, fought his way to the semi-finals and there overcame Ted Drewes, champion from 1927 to 1932. Then he proceeded to the finals to defeat Simons, 6-3, 4-6, 4-6, 4-6.

Although not quite as successful in dueling as a dog, Corky's training by Ralph McElwain of Washington, gained the runner-up title, losing the first round of the same tournament by William Thompson, Brooklyn, 4-3, 5-7, 6-1, 6-2.

After drawing a first round bye in the national singles at Forest Hills, Welsh, under David Geller, of Brooklyn, in straight sets, but lost a tough match in the third round to Marcel Rainville, Canadian Davis Cup champion, 3-6, 2-6, 6-4, 6-2, 6-1. His Verstraten, Duke freshman ace of last season, was defeated in the first round of the same tournament by William Thompson, Brooklyn, 4-3, 5-7, 6-1, 6-2.

## RING HOPES LIE WITH NEW MEN

Warren to Rely on Sophomores as Single Veteran Returns

With the return of Freddie Lloyd to school as the only leading veteran on the prospective 1934-35 squad, Coach, coached by Adair Warren, must depend upon his first sophomore candidates for fighters.

One of last season's varsity fighters, Fred Lloyd, who was Joe Soda. Joe, learning his rudiments of boxing from Adair Warren in his freshman year, developed into a winner with an unusual time, and then became one of the varsity mainstays in his sophomore year. Lloyd, who was Joe Soda, Joe, learning his rudiments of boxing from Adair Warren in his freshman year, developed into a winner with an unusual time, and then became one of the varsity mainstays in his sophomore year.

To fill up the pugilistic vacancies several freshmen of last year are slated for fight. Jack Knapp probably will slip into the 145-pound division for Coach Warren's first fight. Joe Soda, Joe, learning his rudiments of boxing from Adair Warren in his freshman year, developed into a winner with an unusual time, and then became one of the varsity mainstays in his sophomore year.

After punching his way to victory in the National A. A. U. welterweight championship at St. Louis, the Chicago and Cleveland Glenn Glines, and then making to an overwhelming decision when he whipped the Polish welterweight champ at Chicago last year, a graduate of the Youngtown high school, Youngtown, Ohio, has entered Duke University to continue his late career.

Danny, who is 147 pounds of brain and muscle and who has the redoubtable reputation of being the toughest fighter in the conference, by changing his focus at home as a boy with his dog, and catching up to the fox in his time to release "Old Red" from his bonds.

George Bareley, all-American candidate from North Carolina, and Danny Glines, in his "new look", so right, are in a knockout bout with engineering.

George Bareley, all-American candidate from North Carolina, and Danny Glines, in his "new look", so right, are in a knockout bout with engineering.

George Bareley, all-American candidate from North Carolina, and Danny Glines, in his "new look", so right, are in a knockout bout with engineering.

George Bareley, all-American candidate from North Carolina, and Danny Glines, in his "new look", so right, are in a knockout bout with engineering.

George Bareley, all-American candidate from North Carolina, and Danny Glines, in his "new look", so right, are in a knockout bout with engineering.

George Bareley, all-American candidate from North Carolina, and Danny Glines, in his "new look", so right, are in a knockout bout with engineering.

George Bareley, all-American candidate from North Carolina, and Danny Glines, in his "new look", so right, are in a knockout bout with engineering.

## Devils Improve Steadily As Cornelius Opens Up

HARRIERS HAVE HARD SCHEDULE Coach Chambers Sets Date of First Practice For September 21

Three Sophs Show Promise as They Replace Veterans in Wednesday Practice

A new year has rolled around, and with it comes a call for candidates for the cross country squad. For the past two years, Duke's harriers have amazed the conference championship, but with only four experienced men expected to return this year, it will not repeat itself unless some promising new material shows up.

All men interested in the sport are urged to try out for the team. Some men have already been getting in some early workouts, but Coach Bob Chambers has set Monday, September 24, as the opening date for practice. At 3:30 on Monday, freshmen will all be expected to report at the gym. Next year's team will in all probability be composed of this year's freshmen team.

The schedule this year is a tough one. Duke's first meet is with Davidson, known to have one of the strongest cross country teams in the South. This meet is to be held on October 18, at home. Following that, the Harriers meet V. M. I. at Lexington, on November 3. Navy is next on the schedule, the sailers coming here from Annapolis on November 18. In spite of their size, the men from Navy can always be counted on to cover the five mile open country in fast time, and will prove to be a hard acquaintance to beat.

The University of North Carolina (Continued on page eight)

The University of North Carolina (Continued on page eight)

The University of North Carolina (Continued on page eight)

The University of North Carolina (Continued on page eight)

The University of North Carolina (Continued on page eight)

The University of North Carolina (Continued on page eight)

The University of North Carolina (Continued on page eight)

The University of North Carolina (Continued on page eight)

The University of North Carolina (Continued on page eight)

The University of North Carolina (Continued on page eight)

The University of North Carolina (Continued on page eight)

The University of North Carolina (Continued on page eight)

The University of North Carolina (Continued on page eight)

The University of North Carolina (Continued on page eight)

The University of North Carolina (Continued on page eight)

The University of North Carolina (Continued on page eight)

The University of North Carolina (Continued on page eight)

The University of North Carolina (Continued on page eight)

The University of North Carolina (Continued on page eight)

The University of North Carolina (Continued on page eight)

The University of North Carolina (Continued on page eight)

The University of North Carolina (Continued on page eight)

The University of North Carolina (Continued on page eight)



# Coombs Turns Explor Finds "Two-Way" Skunk

Baseball Coach Contradicts Himself; Relates Tall Story of Monks' Seen in Pine Woods; Doctors Worried

By Roy Leland

Back on the campus after the annual summer jaunt to the Maine coast for a month of fitness, Coach Jack Coombs has had quite a lot of the nation's outstanding baseball coaches and players find a spare moment to chat about several matters he made it definite before starting that he would reveal none of his tall tales until he returns from a trip to Texas this winter.

Yet at the very outset he forgot his warning, at once launching into a vivid description of some strange animal which ordinary woodsmen completely fail to picture, a beast whose drangest of many strange traits is that of giving the appearance of advancing when it retreats and of retreating when in reality it is advancing.

Could this creature be the phenomenon with a casual comment to the effect that an indecipherable cross between an optical illusion and the eyes of humans who cannot recognize the creature.

Could this creature be the creature which is the cause of the "two-way" skunk? Coombs has been asked to explain the phenomenon which has been the cause of the "two-way" skunk. Coombs has been asked to explain the phenomenon which has been the cause of the "two-way" skunk.

## Sororities! Fraternities!

PHONE 7-7491

for —  
56 SANDWICHES  
W. P. HAYES  
College Road and Third  
(Behind Girls' Auditorium)

## USED AND NEW FURNITURE

Why not sit your room up with a good OVERSTUFFED EASY CHAIR  
RUGS and END TABLES

## Durham Furniture Exchange

Corner Morgan and Foster Streets

## Baldwin's Welcome Duke Students to Durham

and offer the most complete department store service in the city.

Visit our third floor for Decorations of all kinds.

You've got a hundred and one things to do and very little time in which to do them, so shop in Durham's most complete Department Store. We have planned on your time and you will find just the things you need and at prices that will fit your budget. Quality Furnishing at reasonable prices.

RUGS  
LAMP  
BLANKETS  
DRESSING  
NOVELTIES  
PILLOWS  
CURTAINS

BALDWIN'S - Durham, N.C.

## Duke Students

A warm welcome is extended to you from the shop that has been serving Duke men for many years.

"Our Price Is the Same, But Our Work Is Superior"

## University Barber Shop

"Where Friends Meet For Better Service"

Basement of West Union W. M. Erwin, Mgr.

## GERARD REFERS TO I-M RULINGS

Number of Special Rules Explained Fully by Intramural Director

PROTEST FEEL REQUIRED

To eliminate disputes on rulings of the intramural department Jerry Gerard, who is only one of the public relations men, said that the only way to get the department to work is by the department will be his decisions.

He said that the department will be his decisions.

He said that the department will be his decisions.

He said that the department will be his decisions.

He said that the department will be his decisions.

He said that the department will be his decisions.

He said that the department will be his decisions.

He said that the department will be his decisions.

He said that the department will be his decisions.

He said that the department will be his decisions.

He said that the department will be his decisions.

He said that the department will be his decisions.

He said that the department will be his decisions.

He said that the department will be his decisions.

He said that the department will be his decisions.

He said that the department will be his decisions.

He said that the department will be his decisions.

He said that the department will be his decisions.

He said that the department will be his decisions.

He said that the department will be his decisions.

He said that the department will be his decisions.

He said that the department will be his decisions.

He said that the department will be his decisions.

He said that the department will be his decisions.

He said that the department will be his decisions.

He said that the department will be his decisions.

He said that the department will be his decisions.

He said that the department will be his decisions.

He said that the department will be his decisions.

He said that the department will be his decisions.

He said that the department will be his decisions.

He said that the department will be his decisions.

He said that the department will be his decisions.

## Attention Managers!

Next Tuesday night at 7:00 o'clock there will be a meeting of all intramural managers in the intramural office, room 107 of the gym.

If the manager cannot be present, some representative of that organization should attempt to be there.

Signed,  
Jerry Gerard.

## CAMP PRAISES DUKE GRIDDERS

Sports Critic Insists Devils Will Be "Bigger and Better"

Edwin Culp, leading football critic, writing for the *Football* magazine, in writing, not later than the day following the contest displayed with ambitious aspirations for the 1965 football team.

He said that the department will be his decisions.

He said that the department will be his decisions.

He said that the department will be his decisions.

He said that the department will be his decisions.

He said that the department will be his decisions.

He said that the department will be his decisions.

He said that the department will be his decisions.

He said that the department will be his decisions.

He said that the department will be his decisions.

He said that the department will be his decisions.

He said that the department will be his decisions.

He said that the department will be his decisions.

He said that the department will be his decisions.

He said that the department will be his decisions.

He said that the department will be his decisions.

He said that the department will be his decisions.

He said that the department will be his decisions.

He said that the department will be his decisions.

He said that the department will be his decisions.

He said that the department will be his decisions.

He said that the department will be his decisions.

He said that the department will be his decisions.

He said that the department will be his decisions.

He said that the department will be his decisions.

He said that the department will be his decisions.

He said that the department will be his decisions.

He said that the department will be his decisions.

He said that the department will be his decisions.

He said that the department will be his decisions.

He said that the department will be his decisions.

## FLOHR, WEBBER STAR AS "PRO"

Pitcher Hurling Good Ball While Bill Stars at Third

WEBBER RANKED HIGH

Chosen by Sports Writers and Leading Duke Rethers For All-American

Lefty Fluhr, 34, Duke's newest contribution to the college baseball, is pitching good relief ball for the Philadelphia Athletics. He has batted .300 in 1964, and in three months—allowing 31 hits and 11 runs.

During his career at Duke, Fluhr was a main cog in the Blue Devils' machine. His usual ability to lighten up to lighten the pitch was far in carrying him to success.

Fluhr was named to the first team in the year before last, and he was named to the first team in the year before last.

Fluhr was named to the first team in the year before last, and he was named to the first team in the year before last.

Fluhr was named to the first team in the year before last, and he was named to the first team in the year before last.

Fluhr was named to the first team in the year before last, and he was named to the first team in the year before last.

Fluhr was named to the first team in the year before last, and he was named to the first team in the year before last.

Fluhr was named to the first team in the year before last, and he was named to the first team in the year before last.

Fluhr was named to the first team in the year before last, and he was named to the first team in the year before last.

Fluhr was named to the first team in the year before last, and he was named to the first team in the year before last.

Fluhr was named to the first team in the year before last, and he was named to the first team in the year before last.

Fluhr was named to the first team in the year before last, and he was named to the first team in the year before last.

Fluhr was named to the first team in the year before last, and he was named to the first team in the year before last.

Fluhr was named to the first team in the year before last, and he was named to the first team in the year before last.

Fluhr was named to the first team in the year before last, and he was named to the first team in the year before last.

Fluhr was named to the first team in the year before last, and he was named to the first team in the year before last.

Fluhr was named to the first team in the year before last, and he was named to the first team in the year before last.

Fluhr was named to the first team in the year before last, and he was named to the first team in the year before last.

Fluhr was named to the first team in the year before last, and he was named to the first team in the year before last.

Fluhr was named to the first team in the year before last, and he was named to the first team in the year before last.

Fluhr was named to the first team in the year before last, and he was named to the first team in the year before last.

Fluhr was named to the first team in the year before last, and he was named to the first team in the year before last.

Fluhr was named to the first team in the year before last, and he was named to the first team in the year before last.

Fluhr was named to the first team in the year before last, and he was named to the first team in the year before last.

Fluhr was named to the first team in the year before last, and he was named to the first team in the year before last.

Fluhr was named to the first team in the year before last, and he was named to the first team in the year before last.

Fluhr was named to the first team in the year before last, and he was named to the first team in the year before last.

Fluhr was named to the first team in the year before last, and he was named to the first team in the year before last.

Fluhr was named to the first team in the year before last, and he was named to the first team in the year before last.

Fluhr was named to the first team in the year before last, and he was named to the first team in the year before last.

Fluhr was named to the first team in the year before last, and he was named to the first team in the year before last.

Fluhr was named to the first team in the year before last, and he was named to the first team in the year before last.

Fluhr was named to the first team in the year before last, and he was named to the first team in the year before last.

## WILSON, WEBBER STAR AS "PRO"

Pitcher Hurling Good Ball While Bill Stars at Third

WEBBER RANKED HIGH

Chosen by Sports Writers and Leading Duke Rethers For All-American

Lefty Fluhr, 34, Duke's newest contribution to the college baseball, is pitching good relief ball for the Philadelphia Athletics. He has batted .300 in 1964, and in three months—allowing 31 hits and 11 runs.

During his career at Duke, Fluhr was a main cog in the Blue Devils' machine. His usual ability to lighten up to lighten the pitch was far in carrying him to success.

Fluhr was named to the first team in the year before last, and he was named to the first team in the year before last.

Fluhr was named to the first team in the year before last, and he was named to the first team in the year before last.

Fluhr was named to the first team in the year before last, and he was named to the first team in the year before last.

Fluhr was named to the first team in the year before last, and he was named to the first team in the year before last.

Fluhr was named to the first team in the year before last, and he was named to the first team in the year before last.

Fluhr was named to the first team in the year before last, and he was named to the first team in the year before last.

Fluhr was named to the first team in the year before last, and he was named to the first team in the year before last.

Fluhr was named to the first team in the year before last, and he was named to the first team in the year before last.

Fluhr was named to the first team in the year before last, and he was named to the first team in the year before last.

Fluhr was named to the first team in the year before last, and he was named to the first team in the year before last.

Fluhr was named to the first team in the year before last, and he was named to the first team in the year before last.

Fluhr was named to the first team in the year before last, and he was named to the first team in the year before last.

Fluhr was named to the first team in the year before last, and he was named to the first team in the year before last.

Fluhr was named to the first team in the year before last, and he was named to the first team in the year before last.

Fluhr was named to the first team in the year before last, and he was named to the first team in the year before last.

Fluhr was named to the first team in the year before last, and he was named to the first team in the year before last.

Fluhr was named to the first team in the year before last, and he was named to the first team in the year before last.

Fluhr was named to the first team in the year before last, and he was named to the first team in the year before last.

Fluhr was named to the first team in the year before last, and he was named to the first team in the year before last.

Fluhr was named to the first team in the year before last, and he was named to the first team in the year before last.

Fluhr was named to the first team in the year before last, and he was named to the first team in the year before last.

Fluhr was named to the first team in the year before last, and he was named to the first team in the year before last.

Fluhr was named to the first team in the year before last, and he was named to the first team in the year before last.

Fluhr was named to the first team in the year before last, and he was named to the first team in the year before last.

Fluhr was named to the first team in the year before last, and he was named to the first team in the year before last.

Fluhr was named to the first team in the year before last, and he was named to the first team in the year before last.

Fluhr was named to the first team in the year before last, and he was named to the first team in the year before last.

Fluhr was named to the first team in the year before last, and he was named to the first team in the year before last.

Fluhr was named to the first team in the year before last, and he was named to the first team in the year before last.

Fluhr was named to the first team in the year before last, and he was named to the first team in the year before last.

Fluhr was named to the first team in the year before last, and he was named to the first team in the year before last.

## TIGERS AND 'CATS OPEN TOMORROW

Davidson and Clemson, two of the Blue Devils' early season opponents, launch their fall campaign tomorrow. Both of these teams are regarded as having strong squads this year.

Both of these teams are regarded as having strong squads this year.

Both of these teams are regarded as having strong squads this year.

Both of these teams are regarded as having strong squads this year.

Both of these teams are regarded as having strong squads this year.

Both of these teams are regarded as having strong squads this year.

Both of these teams are regarded as having strong squads this year.

Both of these teams are regarded as having strong squads this year.

Both of these teams are regarded as having strong squads this year.

Both of these teams are regarded as having strong squads this year.

Both of these teams are regarded as having strong squads this year.

Both of these teams are regarded as having strong squads this year.

Both of these teams are regarded as having strong squads this year.

Both of these teams are regarded as having strong squads this year.

Both of these teams are regarded as having strong squads this year.

Both of these teams are regarded as having strong squads this year.

Both of these teams are regarded as having strong squads this year.

Both of these teams are regarded as having strong squads this year.

Both of these teams are regarded as having strong squads this year.

Both of these teams are regarded as having strong squads this year.

Both of these teams are regarded as having strong squads this year.

Both of these teams are regarded as having strong squads this year.

Both of these teams are regarded as having strong squads this year.

Both of these teams are regarded as having strong squads this year.

Both of these teams are regarded as having strong squads this year.

Both of these teams are regarded as having strong squads this year.

Both of these teams are regarded as having strong squads this year.

Both of these teams are regarded as having strong squads this year.

Both of these teams are regarded as having strong squads this year.

Both of these teams are regarded as having strong squads this year.

Both of these teams are regarded as having strong squads this year.

Both of these teams are regarded as having strong squads this year.

Both of these teams are regarded as having strong squads this year.

Both of these teams are regarded as having strong squads this year.

Both of these teams are regarded as having strong squads this year.

Both of these teams are regarded as having strong squads this year.

## BIG FIVE TITLE FELD BY DUKE THREATENED

With Carl Snavely and Hank Anderson re-building within this state the Big Five title field should be more of a three-cornered affair than it has been for years.

North Carolina's football vassal will be led by the hapless guard, George Barclay, who should attract the greatest plaudits in 1964.

North Carolina's football vassal will be led by the hapless guard, George Barclay, who should attract the greatest plaudits in 1964.

North Carolina's football vassal will be led by the hapless guard, George Barclay, who should attract the greatest plaudits in 1964.

North Carolina's football vassal will be led by the hapless guard, George Barclay, who should attract the greatest plaudits in 1964.

North Carolina's football vassal will be led by the hapless guard, George Barclay, who should attract the greatest plaudits in 1964.

North Carolina's football vassal will be led by the hapless guard, George Barclay, who should attract the greatest plaudits in 1964.

North Carolina's football vassal will be led by the hapless guard, George Barclay, who should attract the greatest plaudits in 1964.

North Carolina's football vassal will be led by the hapless guard, George Barclay, who should attract the greatest plaudits in 1964.

North Carolina's football vassal will be led by the hapless guard, George Barclay, who should attract the greatest plaudits in 1964.

North Carolina's football



