

EAST CAROLINA STAGING FASHION SHOW TOMORROW

Co-Eds To Model Gowns From Godey's To Ziegfeld

Y. W. C. A. Committee on Social Service Sponsors Parade Tomorrow Night in Women's Auditorium

"Backward, turn backward," and open the leaves of Godey's Lady Book at the auditorium on the East campus Thursday evening, April 27, at 8 o'clock. The late Ziegfeld would have been astounded at this presentation. Sixty beautiful models gowning becomingly and modestly—in the style of one hundred years ago to the present time, will be on parade.

Reinforcement of drives in a baroque are the dainty parasols and voluminous hats. The spats worn by the town belles of 1910 are shown again. In fact all sorts of style will be featured. If the spectator wishes to go Shakespearean, the committee has satisfied his desire. Would you have romance—here are brides. Would you have humor—here are bawling beauties of the naughty nineties who seek a volage of merriment on their beautiful backs. Would you have adventure—then here are queenstresses who would provide no little amusement for Fisher's penman. All of this will be presented for the famous little silver quarter, and the proceeds will be donated to the Y. W. C. A. Temple Newsome is at the head of the fashion show. Her sub-committee heads are: Helen Gray, Marion Shepherdson, and Rachel Mettze. Patronsess who have helped with the collecting of authentic costumes include Dean Alice M. Baldwin, Mrs. J. B. Mason, Mrs. W. J. Brodigan, Mrs. John Sprunt Hill, Mrs. Mattie Southgate Jones, Mrs. R. L. Tyree, and Mrs. J. S. Morehead. Miss Louise Hall and Mrs. A. T. West are acting as advisors. The modern gown to be worn in the show are from Ellis Stone and Co.

To further the atmosphere created by the costumes, there will be music in charge of Mrs. Bert Cunningham and Jerry Leftwich. The picture turned to the "Dance West McGilly" and song hits of other years will be featured for the showing of the older gowns, while modern music will be played during the latter part of the program.

Kappa Alpha Theta Entertainers at Dance

Beta Rho chapter of Kappa Alpha Theta fraternity held its annual spring dance on Thursday evening, April 26, from 7 till 10:30 o'clock in the Ark on the East campus.

The Ark represented an evening scene in a spring garden, the orchestra being surrounded by spring flowers and foliage. An attractive feature of the decorative scheme was a large lighted moon which shined over a trellis of flowers and vines.

H. van S.

"says... A 'comeback' is being staged by the blue oxford shirt with button down collar—always a favorite at Princeton, its popularity has spread to all well-dressed universities.

DURHAM HENRY SHOP

111 West Main St.



Duke Fashion Cavalcade

Baldwin's Apparel and Footwear will be worn by "Misses Modern" Thursday, April 27th

Dresses, footwear and accessories for "Misses Modern" are selected at Baldwin's by the College authorities. The quality, refinement and distinctiveness of the styles are outstanding. See them at the FASHION CAVALCADE.

R. L. Baldwin Co.
Durham, N. C.

The music was supplied by the Duke Collegians orchestra. There were four no-breaks. The choruses included Mr. and Mrs. R. H. Wright, and Miss Mary Grace Wilson.

Duke Hospital Auxiliary Meets

The regular meeting of the Duke Hospital Auxiliary was held at 10 o'clock Wednesday morning in the medical school. All those interested in sewing and folding dresses for the hospital were urged to attend.

Major Peterson spoke on "The Salvation Army and the Home."

Kappa Sigma Gives Dance

Epsilon Prime chapter of Kappa Sigma fraternity entertained at a twilight dance on Wednesday evening, April 19, from 7 till 10:30 o'clock in the Men's Union. The Duke Collegians orchestra played for the occasion. The hall room was effectively lighted in red and green, the fraternity colors. There were two general no-breaks, and one no-break for the members of Kappa Sigma.

Honor guests of the evening were Dr. and Mrs. Manchester, Miss Mary Grace Wilson, and Mrs. Mary Penberth.

Duke Dames Hold Meeting

The Duke university Dames club held a meeting on Tuesday afternoon, April 26, at 3:40 o'clock in the Women's college library, at which time Dr. Abbot G. Widgery displayed his general collection of Oriental Indian paintings.

Pi Kappa Alpha Sponsors Dance

Alpha Alpha chapter of Pi Kappa Alpha fraternity gave a dance on Friday evening, April 21, from 8:15 till 11 o'clock in the Union ballroom. Playing for the affair were the Duke Collegians. There were three general no-breaks and one for members of Pi Kappa Alpha.

The choruses were by Mrs. Penberth and Miss Mary Keeler.

Visitors on Campus

Visiting on the campus this week-end were Miss Mary A. York, guest of Kappa Delta; Miss Mildred Guthrie and Miss Kay Brownlee, both guests of Kappa Kappa Gamma.

Jelly Leftwich and His Band

every night this week at

THE DURHAM EXPOSITION

Sponsored by the Durham American Legion

Post No. 7

Dancing every night from 9 until 1 a. m.

75c admission

LIVING MODELS OF BY-GONE STYLES



Some of the sixty women students who are to take part tomorrow night in a fashion parade, in which they will wear costumes showing the change of women's styles of dress for more than a century. The whole brilliant affair is to be staged in the Women's college auditorium.

Pi Kappa Phi Has Dance

Mu chapter of Pi Kappa Phi fraternity sponsored a dance on Saturday evening, April 22, from 8:30 till 11 o'clock, in the Men's Union.

The Blue Devil orchestra furnished the music, and the dance floor was decorated in yellow and black. There were two general no-breaks and one no-break for members of the fraternity.

Chaperoning for the affair were Mrs. Mary Penberth, Miss Evelyn Barnes, and Dr. and Mrs. Brown.

Chi Delta Phi Announces Initiation

Zeta chapter of Chi Delta Phi, national honorary literature fraternity, announced its initiation on Wednesday, April 26, of the following: Misses Mildred Taylor, Bernice Rose, Amy Duke, Mary Parkhurst, Doris Welles, Helen Wyatt, and Mrs. Grover Taylor, honorary member.

Duke Students Wed

Announcement has been made of the marriage of Miss Virginia Graham McLean to Dr. Lawrence L. Beall, on April 16, in Cleveland, Miss. Dr. Beall is connected with the university and Mrs. Beall is a graduate student this year.

Another recent marriage was that of Miss Margaret Phillips, who graduated from Duke last year, to Leon Be Villis in Abington, Va., on April 14.

Alpha Tau Omega Announces New Pledging

Xi chapter of Alpha Tau Omega fraternity wishes to announce the pledging of Ernest Crutchen, of Raleigh.

Pi Kappa Phi Pledges New Man

Mu chapter of Pi Kappa Phi announced the recent pledging of Richard E. Horton, of Peebles, N. Y.

House of Representatives Dinner and Theater Party

The members of the Duke House of Representatives entertained their guests last Thursday evening at a banquet and theatre party. The dinner, over which Raymond Lundgren presided, was held in the West campus Union.

The guests and their escorts were: Mrs. Albert H. Wrenner with Mrs. Wrenner; Miss Katherine Giles with James Otis; Miss Gretchen Zimmerman with

DEMURE MISSES FROM 'WAY BACK



Pictured from left to right above are Teeny Harrison, Hazel Emery, Judith Hodge, and Mary Sine, four of the pretty participants in tomorrow night's fashion show in the Women's auditorium.

Duch Deleham; Miss Dorothy Bartlett with Alexander McLean; Miss Ruth Crutchen with Jerry Barry; and Miss Ruth Baker with Raymond Lundgren.

MANY PARTICIPATE IN NEBREDIAN TRY-OUTS

Invitations were sent to 34 women students asking them to participate in the spring try-outs for membership in the Nebredians, honorary swimming organization. The try-outs were held yesterday evening in the Women's college gymnasium.

Those invited to try for membership in the club are: Jane Carlton, Frances Hunter, Mary Jane Mulford, Martha Bailey, Elizabeth Boyd, Betty Jane Dunlap, Katherine Fleming, Katherine Goodman, Helen Gray, Helen Jones, Sarah Jordan, Louise Maxwell, Annie Laurie Newsome, Hazel Emory, Jean Molyneux.



Youth and May Day

What lovely pictures the above combination could inspire, especially if pictures are made for MOTHER'S DAY, May 14th. Ask for special prices.

New frames made of genuine leather—\$2.00

New leatherettes in distinctive styles—\$1.00

New glass frames with protected bound edges—\$2.00



Ellis Stone Photo Dept.

First Floor

D
U
K
E

Where Friends Meet for Better Service

Where a fellow can get exactly what he asks for.

B
A
R
B
E
R

Where satisfaction is guaranteed.

S
H
O
P

Where you can get the best barber service in Durham.

S
H
O
P

Where eight Duke supporters work.

P

BASEMENT WEST UNION

D
U
K
E

B
A
R
B
E
R

S
H
O
P

P

COLLEGIANS RECOVER STOLEN INSTRUMENTS

Horns Stolen From East Campus Union Found in Greensboro Pawn Shop

The musical instruments which were stolen from the Collegians during the first week in April were discovered last week in a pawn shop in Greensboro, when Henry Miller, one of the orchestra members, went there to purchase some new instruments to replace those which were stolen. Miller immediately reported the case to the Greensboro police and the instruments were returned to the orchestra.

Robberies occurred on two occasions—the first on the night of April 2, when instruments valued at approximately \$215 were taken. A second robbery followed on the night of April 6 when instruments worth \$415 were taken. Both robberies occurred on the East campus where the orchestra was playing at the time, and on each occasion the only instruments taken were those belonging to Henry Miller and John H. Smith.

The campus police have been investigating the crime and the Greensboro police are also working on the case.

ARRANGEMENTS MADE FOR INAUGURAL DANCE

Public installation of new officers of the men's student government will take place during general assembly on Thursday following the May Day festival, according to tentative plans. It will probably be arranged for the inaugural ball to come on the evening of the installation day.

The inaugural ball, an important social event of the year, is to be held in the gymnasium on the East campus. Elaborate preparations are being made for this affair, which will be one of the last large dances of the season. Details of information as to the program has not yet been given out.

The installation ceremonies, at which Joe Shefferson and the other recently-elected officers for next year will be inaugurated, are to be held during assembly in the men's college will have the opportunity to witness the induction. This event will mark the last official meeting of the student body.

Bon Art Studio

Fine Photographs

Trust Building

Miller at Conference

The twenty-first annual Carolinian Conference for Social Service held its meeting in Greensboro during the first part of this week.

Dean Miller of the Law school, who is vice-president of the conference, spoke in the general session on April 21, on "The Depression—Its Effect on Government." The main topic of the conference dealt with "The Depression and Social Welfare."

set of the retiring president of the men's student government, Wendell Horne.

EXHIBIT OF SILVERWARE OPEN TO SENIOR WOMEN

The women of the senior class have received invitations to the Gorham Sterling Silver Exhibit, which has been arranged for the Duke students and faculty by the Gorham Company. The exhibit will take place Tuesday, May 2, from 2 to 6 in the Women's college Union. Afternoon tea will be served.

Highlights of the exhibit include pieces of Arretine ware which the original was made in 100 B. C., the processes in making a pitcher, authentic museum pieces, and a special five thousand dollar tea service.

Seniors who present their invitations to the directors of the exhibit will be sent without charge a sterling teaspoon in the pattern they prefer, engraved with their initials.

All Aboard!



An ideal opportunity for Duke students to get that longed-for trip abroad at amazingly low prices. A congenial party, with an experienced conductor, will visit 10 foreign countries. Extensive sightseeing and social diversion.

A Deluxe Tour sailing June 21 on the S. S. Manhattan

Visiting France, Monaco, Italy, Switzerland, Austria, Czechoslovakia, Holland, and England.

Those interested see

Mrs. Penberth, representing

Boyle-Brown Tours

Charlotte, N. C.

DRY CLEANING

for the Man Who CARES

College Life is hard on clothes, but if you will bring them to us for regular renewing, they'll always look well, and wear longer.

Suits Dry Cleaned and Pressed, 65c

KEEPS YOU LOOKING YOUR BEST



Duke University Laundry

PUNCHES Fast-Frozen "Blue Ribbon Ice-Cream"

SHERBETS

Durham Ice Cream Company

We Make any Color Block Ice Cream for Fraternity and Society Banquets

PHONE: Dial L-685 MAIN AT DUKE

FANCY ICES Made With Pure Cream BLOCK CREAM

All-American Football Stars To Move Company

Co-ed Companion to Mighty Athletes to Be Selected by College Humor and Universal Pictures Who Think of Everything

By Lou Gans

Not so much water has gone over the falls since Young America, to wit, College Humor, was in a bit of an uproar and a bit of a fuss, arguing and wondering over the selections for the All-American football team. Albeit this All-American aggregation is a mythical one, yet it is the aim and ambition ne plus ultra of those who hug the boys' outer covering to the goal line, that the boys' desire is no longer to die for dear old Slivash, eat sausage, and for the team was chosen and you and you and you disagreed. Well, if you think that was a bed of roses for you choosers, get a load of this!

For years and years, from Carrie Nation to Lucy Stone to Margaret Sanger, American femininity has fought, you readily lied, to establish from the rock-bottomed of Maine to the sun-kissed dunes of California, "Feminine Equality," bless it! What's the answer? They come, they drink, they fly, they drive cars, and—what's the use? It is recognized that these guys have been heavy and have in some way or other created beauty on canvas and on celluloid thus. They have had years of experience in the judgment of character and types, but don't let that scare you! There may be something in that motto or in the way your eyes twinkle that will make them forget that they are surfeited with the thing they are trying to discover.

The contest closes tonight, July 1, 1933, and all material must be in the hands of the Judges before that time. What do you say, girls? Why cannot we have the All-American girl, come from Duke? We have All-Southern tackles, All-American pitchers, All-State half-backs, but we have NOT yet a Duke All-American girl, the typical co-ed! For dear old Duke!

Well, now that I have reached the "unexcused" or something, my story, let me call in with this statement. Please send your entries directly to the sponsors. Do not send them to the "Greenside!" We have neither the facilities nor the time to take care of the deluge of photos and data that will inevitably be the result of this article. But although we have nothing directly to do with this gigantic enterprise, let me take

badly want.

Very solicited test the scholastic standing of the entrants be hurl, competition will be entirely by photograph, and thus the potential Garbos, Crawfords, and Gables (pardon, any error) will not have to take time off from classes to present themselves to the Judges. Please send a front view and a profile view, and also descriptive data and a statement from an alumnus or dramatic teacher relevant to the quality of the speaking voice. And before I forget it, a copy of the cover of the current issue of the magazine "Amorismontis" (Circulation ain't what you see heo).

The Judges for this stupendous, colossal contest, not of pulchritude, but of character and type, are Russell Patterson, Jefferson Macomber, Stanley Y. Giffon, Carl Lammey, Jr., and Larry Reid. And, sisters, if you are chosen by this battery of Judges, sing it out to the world at large that you have got it made! It is recognized that these guys have been heavy and have in some way or other created beauty on canvas and on celluloid thus. They have had years of experience in the judgment of character and types, but don't let that scare you! There may be something in that motto or in the way your eyes twinkle that will make them forget that they are surfeited with the thing they are trying to discover.

The contest closes tonight, July 1, 1933, and all material must be in the hands of the Judges before that time. What do you say, girls? Why cannot we have the All-American girl, come from Duke? We have All-Southern tackles, All-American pitchers, All-State half-backs, but we have NOT yet a Duke All-American girl, the typical co-ed! For dear old Duke!

Well, now that I have reached the "unexcused" or something, my story, let me call in with this statement. Please send your entries directly to the sponsors. Do not send them to the "Greenside!" We have neither the facilities nor the time to take care of the deluge of photos and data that will inevitably be the result of this article. But although we have nothing directly to do with this gigantic enterprise, let me take

DUKE MEN ATTEND CONVENTION HELD BY PHI ETA SIGMA

Local Delegation Is Largest at National Meeting Held in Wisconsin

DUKE GROUP YOUNGEST Chapter Here Is Youngest of All; Was Established in May, 1932

At the third national convention of Phi Eta Sigma held April 14-15 at the University of Wisconsin, the Duke university chapter had the distinction of sending a larger delegation than any other chapter of the national Freshman honorary society.

The Duke chapter was represented by Charles D. Beatty, Pittsburgh, Pa., a sophomore member, acting as official delegate; Cecil Peck, West Palm Beach, Fla., and Frank M. Woolley, Hancock, Mass., members recently initiated into the fraternity.

The Duke chapter is the youngest of thirty-two active chapters, having been installed May 6, 1932. Dean D. M. Arnold is faculty advisor of the local chapter.

Duke's invitation to hold the next national convention here in 1933 was endorsed by the delegation from N. C. State college.

The convention was held in the memorial union of the University of Wisconsin. It celebrated the tenth anniversary of the founding of Phi Eta Sigma at the University of Illinois in 1923.

Trisbe was paid the late Dean Thomas Arkate Clark of the University of Illinois, who died last summer. Dean Clark was founder of Phi Eta Sigma, a national officer of Alpha Tau Omega social fraternity, and chairman of the scholarship committee of the Interfraternity conference for a number of years.

Dean C. M. Thompson, of the University of Illinois, the only living founder of the fraternity, was one of the speakers of the conference. President Glenn Frank, of the University of Wisconsin, was speaker at the initiation banquet of the University of Wisconsin chapter, attended by the delegates.

The Duke delegation drove to Madison for the meeting. Besides an inspection of the University of Wisconsin, which visited Chicago and Northwestern university.

Phi Eta Sigma, national honorary fraternity for freshmen, was organized for the purpose of encouraging intellectual scholarship by initiating those freshmen who make a high scholastic record during their first year in college.

Physical Ed. Conclave

Mrs. Alma Wyche and Mrs. Virgil Chastoff of the department of physical education at the University of Wisconsin at Louisville took part in the convention of the Southern Association of Directors of Physical Education.

This opportunity to wish you all the luck in the world, and I hope you will bring home the bacon, or the contract!

Delaplane Joining Hamilton In Spanish Price Research

W. H. Delaplane, graduate student here, will leave Duke for Spain in the near future, at the invitation of Dr. Earl J. Hamilton, of Duke, who for the past three years has been directing price researches in Spain for the International Scientific Commission on Price History, which is financed by the Rockefeller foundation.

The work for which Mr. Delaplane has been called will cover price movements in Spain from the year 1200 to 1823, his particular field being prices from 1900 to 1833.

During the period of substantial leave from the university when Dr. Hamilton has been working in Spain under the Rockefeller foundation, Dr. Delaplane has been a member of the national Freshman honorary society.

The Duke chapter was represented by Charles D. Beatty, Pittsburgh, Pa., a sophomore member, acting as official delegate; Cecil Peck, West Palm Beach, Fla., and Frank M. Woolley, Hancock, Mass., members recently initiated into the fraternity.

The Duke chapter is the youngest of thirty-two active chapters, having been installed May 6, 1932. Dean D. M. Arnold is faculty advisor of the local chapter.

Duke's invitation to hold the next national convention here in 1933 was endorsed by the delegation from N. C. State college.

The convention was held in the memorial union of the University of Wisconsin. It celebrated the tenth anniversary of the founding of Phi Eta Sigma at the University of Illinois in 1923.

Trisbe was paid the late Dean Thomas Arkate Clark of the University of Illinois, who died last summer. Dean Clark was founder of Phi Eta Sigma, a national officer of Alpha Tau Omega social fraternity, and chairman of the scholarship committee of the Interfraternity conference for a number of years.

The Duke delegation drove to Madison for the meeting. Besides an inspection of the University of Wisconsin, which visited Chicago and Northwestern university.

Phi Eta Sigma, national honorary fraternity for freshmen, was organized for the purpose of encouraging intellectual scholarship by initiating those freshmen who make a high scholastic record during their first year in college.

Physical Ed. Conclave

Mrs. Alma Wyche and Mrs. Virgil Chastoff of the department of physical education at the University of Wisconsin at Louisville took part in the convention of the Southern Association of Directors of Physical Education.

This opportunity to wish you all the luck in the world, and I hope you will bring home the bacon, or the contract!

College Women Meet In Raleigh During Holidays

Dean Alvin Baldwin of the Woman's college spoke on the "University Woman in Her Home Community" at a meeting of the American association of University Women in Raleigh April 18 and 19. This was one of the principal addresses of the meeting. Miss Elizabeth Anderson, of Duke, is president of the local chapter of the organization.

Thirty-nine colleges and universities were represented at the meeting, which featured discussion groups and talks by influential Alas in the field of education.

At this meeting the names of the fellowship fund known as the South Atlantic Fellowship was changed to the Elizabeth Avery Cotton Fellowship, in memory of Miss Cotton, a former teacher at Meredith, during her career as a teacher, Miss Cotton interested herself in the raising of the standards then held for women's colleges in the south.

The local chapter of the A. A. U. W., which recently held benefit performance of "Cavalcade" contributed the proceeds of the performance to the fund.

Other speakers in the program were Dr. Walter Lingde, president of Davidson college, who spoke on "The University Woman as a Cultural Force in Her Community," and Mrs. Ernest Crutcher, whose topic was "The Role of the Junior College in Higher Education." Miss Catherine Allen, of Raleigh, was

quicker offers on prices, due to a much freer and better organized world commerce. The world production of gold in 1932 was the largest in world history, and may prove a big factor together with governmental measures to stop hoarding and make more economical use of gold, in causing another important epoch of rising prices.

The sudden flood of gold and silver reaching Spain during the period of Professor Hamilton's researches, gradually had tremendous effects in the stimulation of commerce and business over the world. The latter discoveries of gold in California, Australia, the Klondike, and South Africa, had much

sign traders had to become Spanish subjects with offers in Spain. In the mean time, however, many Spanish ships by their valuable cargoes were captured by pirates or treacherous officers encouraged by Spaniards in Spain. In this way, the rest of Europe began to secure some share of the New World treasure.

Another factor in such distribution of gold and silver, were the continental wars and occupations of considerable European territory by Spain in the days of military domination by Spain. This led to large diffusion of Spanish gold and silver over Europe and particularly as it found its way into the Netherlands, then the chief trading and banking nation of the world, a pronounced effect occurred in prices, which in general trebled by 1600.

From 1509 to 1530, nearly all the precious metal imported was gold; in subsequent years, the proportion of gold had risen to 12 per cent, and silver had risen to 88 per cent. From 1570 to 1600, nearly one-half of the imports were of silver, particularly from the rich new silver mines of Potosi in Bolivia, discovered in 1545. During this latter period silver money lost about half of its value as compared with gold money. At the time of the discovery of America, the native population of Europe, gold and silver was supposed to have been only \$200,000,000, most of which was largely hoarded in churches, or held by kings, princes, and money lenders who hoarded away between kings.

The sudden flood of gold and silver reaching Spain during the period of Professor Hamilton's researches, gradually had tremendous effects in the stimulation of commerce and business over the world. The latter discoveries of gold in California, Australia, the Klondike, and South Africa, had much

sign traders had to become Spanish subjects with offers in Spain. In the mean time, however, many Spanish ships by their valuable cargoes were captured by pirates or treacherous officers encouraged by Spaniards in Spain. In this way, the rest of Europe began to secure some share of the New World treasure.

Another factor in such distribution of gold and silver, were the continental wars and occupations of considerable European territory by Spain in the days of military domination by Spain. This led to large diffusion of Spanish gold and silver over Europe and particularly as it found its way into the Netherlands, then the chief trading and banking nation of the world, a pronounced effect occurred in prices, which in general trebled by 1600.

From 1509 to 1530, nearly all the precious metal imported was gold; in subsequent years, the proportion of gold had risen to 12 per cent, and silver had risen to 88 per cent. From 1570 to 1600, nearly one-half of the imports were of silver, particularly from the rich new silver mines of Potosi in Bolivia, discovered in 1545. During this latter period silver money lost about half of its value as compared with gold money. At the time of the discovery of America, the native population of Europe, gold and silver was supposed to have been only \$200,000,000, most of which was largely hoarded in churches, or held by kings, princes, and money lenders who hoarded away between kings.

The sudden flood of gold and silver reaching Spain during the period of Professor Hamilton's researches, gradually had tremendous effects in the stimulation of commerce and business over the world. The latter discoveries of gold in California, Australia, the Klondike, and South Africa, had much

sign traders had to become Spanish subjects with offers in Spain. In the mean time, however, many Spanish ships by their valuable cargoes were captured by pirates or treacherous officers encouraged by Spaniards in Spain. In this way, the rest of Europe began to secure some share of the New World treasure.

Another factor in such distribution of gold and silver, were the continental wars and occupations of considerable European territory by Spain in the days of military domination by Spain. This led to large diffusion of Spanish gold and silver over Europe and particularly as it found its way into the Netherlands, then the chief trading and banking nation of the world, a pronounced effect occurred in prices, which in general trebled by 1600.

From 1509 to 1530, nearly all the precious metal imported was gold; in subsequent years, the proportion of gold had risen to 12 per cent, and silver had risen to 88 per cent. From 1570 to 1600, nearly one-half of the imports were of silver, particularly from the rich new silver mines of Potosi in Bolivia, discovered in 1545. During this latter period silver money lost about half of its value as compared with gold money. At the time of the discovery of America, the native population of Europe, gold and silver was supposed to have been only \$200,000,000, most of which was largely hoarded in churches, or held by kings, princes, and money lenders who hoarded away between kings.

The sudden flood of gold and silver reaching Spain during the period of Professor Hamilton's researches, gradually had tremendous effects in the stimulation of commerce and business over the world. The latter discoveries of gold in California, Australia, the Klondike, and South Africa, had much

sign traders had to become Spanish subjects with offers in Spain. In the mean time, however, many Spanish ships by their valuable cargoes were captured by pirates or treacherous officers encouraged by Spaniards in Spain. In this way, the rest of Europe began to secure some share of the New World treasure.

attended the conference of the international organization, held at Edinburgh last summer, reported on the activities of the conference.

Selection of new officers took place at the meeting in Raleigh, with Mrs. Clyde A. Milner, of Greensboro, going in as president, and Mrs. J. P. Davison, of Charlotte, as secretary.

The local organization held a meeting yesterday in the Woman's college (Cobb), at which time Dr. N. I. White, of the English department, spoke on "Methods of Preventing and Alleviating Unemployment." Dr. White gave in his talk vivid illustrations of the work of the local labor exchange of which he is founder and director.

JUNIORS AND SENIORS STILL PLAN FOR DANCE

A joint social committee of both the senior and junior classes has met frequently of late to discuss plans for a dance in the near future sponsored by both classes. The committee feels that the prospects for such a dance are better now than they have been in the past few years.

May 20 has been set as the tentative date for the dance, which, if plans mature, will be held in the gymnasium in the East campus. If the dance is on that date, the competitors in the Southern conference track meet will be extended indefinitely as the guests of the joint social committee. Although it is not yet definitely decided, "Jelly" Leftwich will probably furnish the music for the first dance that has ever been sponsored on the Duke campus by the two classes.

Other members of the program were Dr. Walter Lingde, president of Davidson college, who spoke on "The University Woman as a Cultural Force in Her Community," and Mrs. Ernest Crutcher, whose topic was "The Role of the Junior College in Higher Education." Miss Catherine Allen, of Raleigh, was

quicker offers on prices, due to a much freer and better organized world commerce. The world production of gold in 1932 was the largest in world history, and may prove a big factor together with governmental measures to stop hoarding and make more economical use of gold, in causing another important epoch of rising prices.

The sudden flood of gold and silver reaching Spain during the period of Professor Hamilton's researches, gradually had tremendous effects in the stimulation of commerce and business over the world. The latter discoveries of gold in California, Australia, the Klondike, and South Africa, had much

sign traders had to become Spanish subjects with offers in Spain. In the mean time, however, many Spanish ships by their valuable cargoes were captured by pirates or treacherous officers encouraged by Spaniards in Spain. In this way, the rest of Europe began to secure some share of the New World treasure.

Another factor in such distribution of gold and silver, were the continental wars and occupations of considerable European territory by Spain in the days of military domination by Spain. This led to large diffusion of Spanish gold and silver over Europe and particularly as it found its way into the Netherlands, then the chief trading and banking nation of the world, a pronounced effect occurred in prices, which in general trebled by 1600.

From 1509 to 1530, nearly all the precious metal imported was gold; in subsequent years, the proportion of gold had risen to 12 per cent, and silver had risen to 88 per cent. From 1570 to 1600, nearly one-half of the imports were of silver, particularly from the rich new silver mines of Potosi in Bolivia, discovered in 1545. During this latter period silver money lost about half of its value as compared with gold money. At the time of the discovery of America, the native population of Europe, gold and silver was supposed to have been only \$200,000,000, most of which was largely hoarded in churches, or held by kings, princes, and money lenders who hoarded away between kings.

The sudden flood of gold and silver reaching Spain during the period of Professor Hamilton's researches, gradually had tremendous effects in the stimulation of commerce and business over the world. The latter discoveries of gold in California, Australia, the Klondike, and South Africa, had much

sign traders had to become Spanish subjects with offers in Spain. In the mean time, however, many Spanish ships by their valuable cargoes were captured by pirates or treacherous officers encouraged by Spaniards in Spain. In this way, the rest of Europe began to secure some share of the New World treasure.

Another factor in such distribution of gold and silver, were the continental wars and occupations of considerable European territory by Spain in the days of military domination by Spain. This led to large diffusion of Spanish gold and silver over Europe and particularly as it found its way into the Netherlands, then the chief trading and banking nation of the world, a pronounced effect occurred in prices, which in general trebled by 1600.

From 1509 to 1530, nearly all the precious metal imported was gold; in subsequent years, the proportion of gold had risen to 12 per cent, and silver had risen to 88 per cent. From 1570 to 1600, nearly one-half of the imports were of silver, particularly from the rich new silver mines of Potosi in Bolivia, discovered in 1545. During this latter period silver money lost about half of its value as compared with gold money. At the time of the discovery of America, the native population of Europe, gold and silver was supposed to have been only \$200,000,000, most of which was largely hoarded in churches, or held by kings, princes, and money lenders who hoarded away between kings.

The sudden flood of gold and silver reaching Spain during the period of Professor Hamilton's researches, gradually had tremendous effects in the stimulation of commerce and business over the world. The latter discoveries of gold in California, Australia, the Klondike, and South Africa, had much

sign traders had to become Spanish subjects with offers in Spain. In the mean time, however, many Spanish ships by their valuable cargoes were captured by pirates or treacherous officers encouraged by Spaniards in Spain. In this way, the rest of Europe began to secure some share of the New World treasure.

Another factor in such distribution of gold and silver, were the continental wars and occupations of considerable European territory by Spain in the days of military domination by Spain. This led to large diffusion of Spanish gold and silver over Europe and particularly as it found its way into the Netherlands, then the chief trading and banking nation of the world, a pronounced effect occurred in prices, which in general trebled by 1600.

From 1509 to 1530, nearly all the precious metal imported was gold; in subsequent years, the proportion of gold had risen to 12 per cent, and silver had risen to 88 per cent. From 1570 to 1600, nearly one-half of the imports were of silver, particularly from the rich new silver mines of Potosi in Bolivia, discovered in 1545. During this latter period silver money lost about half of its value as compared with gold money. At the time of the discovery of America, the native population of Europe, gold and silver was supposed to have been only \$200,000,000, most of which was largely hoarded in churches, or held by kings, princes, and money lenders who hoarded away between kings.

The sudden flood of gold and silver reaching Spain during the period of Professor Hamilton's researches, gradually had tremendous effects in the stimulation of commerce and business over the world. The latter discoveries of gold in California, Australia, the Klondike, and South Africa, had much

Betty Co-ed Says:

"I wish I was lucky like some girls who carry me out to dinner and I've been told that Ervin Coffee Shoppe is the cutest and nicest place to eat, and we wouldn't have to walk very far. I hope he'll take a hint."

Ervin Coffee Shoppe
Corner Trinity Avenue and Buchanan movement

Ervin Coffee Shoppe
Corner Trinity Avenue and Buchanan movement

when . .

you think of RENTING INSURING BUYING

think of DURHAM REALTY and INSURANCE CO.

Reason No. 4

We have the widest range of realty and rental accommodations in Durham—five to twelve room apartments (with one and two baths), and one to five room houses (both one story and duplex) . . . each planned to satisfy the most discriminating client.

DISCOVER OUR NEW DEAL VALUES

Phone 115-78 Trust Building

when . .

you think of RENTING INSURING BUYING

think of DURHAM REALTY and INSURANCE CO.

Reason No. 3

We have the widest range of realty and rental accommodations in Durham—five to twelve room apartments (with one and two baths), and one to five room houses (both one story and duplex) . . . each planned to satisfy the most discriminating client.

DISCOVER OUR NEW DEAL VALUES

Phone 115-78 Trust Building

RIDE THE BUSES

Durham Public Service Company

Duke University Students

WEST CAMPUS

Operated by Duke University for the Convenience of All Students

Any suggestions for improvement in service and meals appreciated

J. E. THOMPSON, 28, Manager

Yes Sir! Outstanding Values for the College Man's Wardrobe

Set Yourself Up to These New Spring Items and Save Money

Classy New Sport Shoes

White bucks, all kinds of combinations, and all other styles that are sure to please the most discriminating, selling at—

1.95, 2.95, and 3.95

Spring Slacks

Whether you like plaids, checks, or stripes, we have them. A complete line—

1.95 up

New Spring Shirts

Plaids, mesh, solid colors, with tab or straight collars. Bargains at—

1.00 to 1.50

Spring Sweaters

Un-necks, V-necks, Crew-necks, or any kind of neck or style, they are here for you—

1.45 and 1.95

Riding Breeches

The best quality riding breeches obtainable, in all the new shades and fabrics, all unusual bargains at—

2.95

Men's Golf Knickers

Can't be beat for spring wear. We have them in all the new shades and fabrics, we have a large collection of golf hose to match your spring knickers.

The New Army Store

116 EAST MAIN STREET

Spring Fever!

Vitally different!

SPRING FEVER! G'wan! All you need is the right something to eat. And here it is—tasty Shredded Wheat biscuits. Add milk or cream. Then blend. And go to it.

You'll soon be hitting high again, for Shredded Wheat is a born youth-preserver—a VITALLY DIFFERENT food that puts new spring in your step.

Shredded Wheat is nothing more or less than true whole wheat. It's packed with body-builders, energy-makers—and just the right proportion of Nature's friendly regulator, bran.

Eat Shredded Wheat any way you like it—with milk or cream, with fresh or preserved fruit, with butter or poached eggs. Eat it every day for ten days straight (your pocketbook won't kick). And watch this VITALLY DIFFERENT food take the tempus verum febrix (spring fever, m'lady) for long, long ride!

When you see NAGERS fall on the biscuits, you KNOW you have Shredded Wheat.

SHREDDED WHEAT

A product of NATIONAL BISCUIT COMPANY "Unesda Bakers"

TRACK TEAM SWAMPS W. A. L. 85-41

Thrilling Meet Places Devils Among Favorites

BRITON FEATURE

Sir Josiah Charles Stamp, British Economist, Will Deliver Commencement Address

PROGRAM OPENS JUNE 4

Few to Make Opening Address; Commencement Sermon by Outstanding Pastor

Taking nine first and ten second places, the Duke track and field men scored an impressive 85-41 victory over Washington and Lee in the stadium last Saturday afternoon. Led by Captain Browline, who topped all contestants with 14 points, the Blue Devils kept clean their undefeated record this season.

Dunaj, W. & L. sophomore, gave the best individual performance of the afternoon by setting a new Southern conference record of 9:46.2 in the two-mile run, and following an hour later with a victory in the 800-yard run. In the two-mile run the W. & L. star had trailed Blind, Duke, for seven and a half laps, when a brilliant split gave him a margin of several yards at the tape.

Browline, Duke captain, won the 220-yard dash, the 200-yard low hurdles, and tied his teammate, Tarrall, in the 100-yard dash. Flakelstein, W. & L. leading ace, won the 120-yard hurdles, but trailed Browline and Shaddock of Duke to the finish in the low hurdle event.

"Red" Lewis, star Blue Devil mile, set

a fast pace all the way in his event to win in the excellent time of 4:51.

The summary follows:
100-yard dash: Browline and Tarrall, both of Duke, tied for first; Palmer, Duke, third, time, 16.

200-yard dash: Won by Dunaj, W. & L.; Blind, Duke, second; Bray, Duke, third, time, 3:14. (New record) old Southern conference record of 3:14 made by Philstead, at North Carolina, in 1918.)

220-yard dash: Won by Browline, Duke; Tarrall, Duke, second; Sawyers, W. & L., third, time, 2:18.

100-yard high hurdles: Won by Flakelstein, W. & L.; Schade, W. & L., second; Clark, Duke, third, time, 2:15.

200-yard high hurdles: Won by Browline, Duke; Shaddock, Duke, second; Flakelstein, W. & L., third, time, 2:22.

800-yard run: Won by Dunaj, W. & L.; Bradsher, Duke, second; Cole, Duke, third, time, 2:12.2.

Mile run: Won by Lewis, Duke; Hartigan, Duke, second; Ruff, W. & L., third, time, 4:51.

400-yard run: Won by Bradsher, Duke; Redman, Duke, second; Hassell, W. & L., third, time, 2:1.

1000-yard run: Won by Ripley, Duke; Carson, Duke, second; Clemens, W. & L., third for second, time, 1:11.

High Jump: Won by Rivers, W. & L.; Albers, Duke, and Cook, W. & L., tied for second, height, 5 feet, 11 inches.

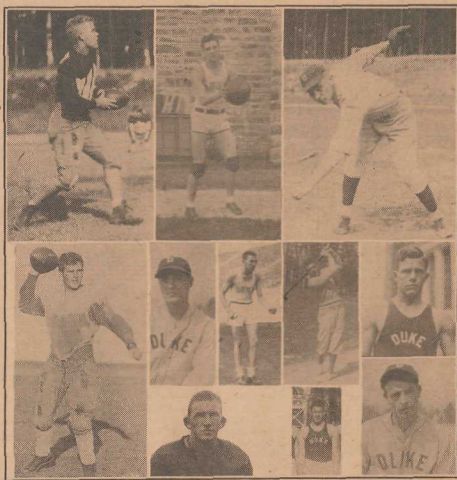
Shot put: Won by Stevens, Duke; Address, Duke, second; Mann, Duke, third, distance, 40 feet, 49 inches.

Javelin: Won by Pitterson, W. & L.; Ripley, Duke, second; Nordstrom, Duke, third, distance, 141 feet, 9 1/2 inches.

200-yard dash: Won by Dunaj, Duke; Clark, Duke, second; Hilde, W. & L., third, distance, 23 feet, 8 inches.

1000-yard run: Won by Lewis, Duke; Pitterson, W. & L., second; Stanley, W. & L., third, distance, 124 feet, 9 1/2 inches.

OUTSTANDING DUKE ATHLETES



Picture above are eleven of Duke's athletic stars who are making remarkable records this year. In the upper left is Harry Rosalter, triple threat end who made second team all-southern this fall. Upper center is Jim Thompson, all-southern basketball center who received honorable mention for all-American. Morty Fisher, upper right, is showing up well as pitcher on the Blue Devil 1933 baseball team. The lower left is Lorel Mason, captain of last fall's football team; he was on the second all-southern team as quarterback. Bobby Coombs was all-American pitcher his sophomore year. He is Duke's star hurler this season. Henry Palmer is a consistent winner on the track team in the broad jump and quarter mile run. Roger Potocok is present captain of the golf team and was N. C. Intercollegiate champion last year. Fred Lloyd, captain of the boxing team, was a Southern Conference champion in 1932 but was unable to defend his title this year, due to a broken hand. Lower right to left: Art Kersay, captain of the 1933 baseball team, and John Browline, track captain and the South's outstanding track star. He runs several events and holds the Conference record for the low hurdles. In the center is Fred Crawford, all-southern tackle and second team all-American this year.

Freshmen Also Win Over High School Combination

SIZEMORE LEADS

Duke Freshmen Gets 24 Points to Lead Field; Williams, Duke, Second

BROWNLEE STARS

Duke Captain Gets Fourteen Points as Devils Get Nine First Places

The Duke freshmen track team successfully met the combined track teams of Charlotte and Durham High schools last week and emerged victorious, 72-45. Frank Sizemore, of Duke, formerly of High Point, led the home team with firsts in the 100, 220, 200-yard low hurdles, the shot put, and a second in the broad jump, to score 23 points for the Blue Imps. Williams with three seconds in the field events, was second high scorer for the Duke team.

These invading teams finished first and second in the recent state track meet held at Chapel Hill. They won the 1200-yard high hurdles, the mile run, the 440 and 880-yard runs, discs, and broad jump, while the remaining eight firsts went to the Duke frosh.

The summary follows:
100-yard run: Won by Sizemore, Duke; Hasker, Durham high, second; Bryan, Duke, third, time, 2:1.

150-yard high hurdles: Won by Jacobson, Charlotte high; Phillips, Duke, second; Decker, Duke, third, time, 1:14.

200-yard dash: Won by Sizemore, Duke; Bryan, Duke, second; Graves, Charlotte high, third, time, 2:15.

Mile run: Won by Mason, Charlotte high; Ford, Duke, second; Henson, Charlotte, third, time, 4:25.2.

400-yard run: Won by Southerland, Durham; Brantley, Duke, second; Myers, Duke, third, time, 2:1.

200-yard low hurdles: Won by Sizemore, Duke; Jacobson, Charlotte, second; Ward, Duke, third, time, 2:1.

800-yard run: Won by Worth, Durham; Fink, Duke, second; Evans, Charlotte, third, time, 2:14.5.

1000-yard run: Won by Copeland, Charlotte; Williams, Duke, second; C. Henson, Charlotte, third, distance, 118 feet, 4 1/2 inches.

Javelin: Won by Harshman, Duke; Williams, Duke, second; Buntz, Duke, third, distance, 146 feet, 4 inches.

Shotput: Won by Sizemore, Duke; Williams, Duke, second; Richards, Duke, third, distance, 43 feet, 11 inches.

High Jump: Won by Hale, Duke; Griffin, Duke, second; Hilt and Pashley, Charlotte, tied for third, height, 5 feet, 8 inches.

Broad jump: Won by Potocok, Charlotte; Sizemore, Duke, second; Hasker, Charlotte, third, distance, 23 feet, 4 inches.

Pole vault: Won by Phillips, Duke; Fox, Duke, second; Brown, both of Charlotte, tied for second; Buntz and Brown, both of Duke, tied for third, height, 16 feet, 8 inches.

Reference: General, (H. I.) Shorter, Evans (Duke); Turner, Carl, (Duke).

DUKE PLAYS HOST TO TRACK TEAMS OF SOUTH MAY 19

Local Track in Excellent Shape For Southern Conference Track Meet

Track and field records are scheduled to topple when the 11th annual Southern Conference championships are run off in the Duke Stadium on May 19th and 20th. A bitter battle for the title will be waged between Duke, Virginia, and North Carolina, since last year's winner, Louisiana State university, is not in the conference this year.

Two days of fast action are in store for local fans, for never since 1928, when the trio of Hamm, of Georgia Tech, Pettiberty, of North Carolina, and Goss, of Kentucky, were setting up Southern conference records, has there been such a brilliant array of this-class in the title meet.

Dunaj, W. & L. sophomore flash, has already cracked the conference two mile mark on the Duke track, but he will find plenty of competition on the 20th from Blind, of Duke, whom he lead to the tape by only a few yards when he hung up the new mark. Other distance stars will be Captain Lantz, of Virginia, in the mile and two-mile, and "Red" Lewis, of Duke, in the mile run.

A trio of top-notch performers will (Continued on page eight)

WHY WAIT...

to be reminded you are ready for a new

Summer Linen

Just what do you prefer? White or colored linen, double breasted, single breasted with half pleated back, or the new bi-wing (belly) coat?

12.50 to 17.50

Something New in Linens

We are exclusive agents in Durham for the famous Hermann imported Porto Rican linens, an exclusive fabric that gives more wearing comfort and is less expensive because it holds a crease and at the same time does not wrinkle. Drop in and see our linen suits tailored with this new material.

Complete Showing of Crosby Square Sport Shoes

All the new Spring creations, including combinations, bucks, and figured cut-outs.

ESPECIALLY FOR DUKE UNIVERSITY

The newest fabrics and styles in light weight sport combinations; fashionable with material that will make an ideal combination with your sport coat or suit. White serge, striped effects, and the new flannel cords—

2.50 to 6.00

Miller-Bishop Co.

North Corcoran Street

Take Advantage of Our Special Rates on Kodak Finishing.

Best of Work—4-hour Service

All Rolls Developed Free

RAMSEY STUDIO

205 1/2 West Main Street



TURKISH TOBACCO
comes to this country in bales.
The leaves are small and
tightly packed. Each bale
contains about 40,000 leaves.

DOMESTIC TOBACCO
is stored in huge wooden
bushels. Each bushel
contains about 1000 pounds
of tobacco.

A flavor that neither possesses alone

Early in the 17th century, tobacco seed from America was taken to Turkey. Different soil, different climate, different temperatures night and day, and different farming methods produced an entirely new tobacco—small in size, but very rich and aromatic.

Four certain spots are famous for the quality of their Turkish tobacco—Xanthi and Cavalla in

Greece; Samosun and Smyrna in Turkey. And it is principally from these places that our buyers get the Turkish for Chesterfield.

These Turkish tobaccos are blended, in just the right amount, with Domestic tobacco. It is this blending and cross-blending of just the right amount of Turkish and Domestic tobaccos which gives Chesterfield a flavor that neither possesses alone.



Chesterfield

—the cigarette that's Milder
—the cigarette that Tastes Better



TRY THE A & P LUNCHEONETTE

333 Main Street, Durham, N. C., for LUCKY STRIKE, CHESTERFIELD, CAMELS, and OLD GOLD CIGARETTES

11c a package—\$1.05 a carton

The Great Atlantic & Pacific Tea Co.

CAMPUS BULLETINS

NATIONAL LEAGUE OF Women Voters will hold an open meeting at four o'clock tomorrow afternoon in the parlors of East Duke. The program is in charge of the welfare committee. All those interested are cordially invited to attend.

EPISCOPAL STUDENTS' Auxiliary will meet Sunday, May 6, at 4 p. m. at St. Joseph's Chapel, West Durham. The Chapel is on West Main street, one block West of Southeast. A short business meeting will be held, and proposals for a dance and a hike will be discussed. All members are urged to attend and bring their pledge fee.

DUKE PLAYERS meeting at 7:30 tomorrow evening in the Little Theatre. All are urged to attend.

Richmond
In the early years dormitory rooms bearing the number 13 were unoccupied for long periods; now the rooms are numbered 11, 12, 13A, 14.

PITCHING BATTLE FEATURES DEACON WIN OVER DEVILS
(Continued from page One)
Score by innings: 000 000-0-0 Wake Forest 129 000 00-0
Runs batted in: Brogden, Barnes, Eric, Thackeray; hits: Barry, Brogden, Wenta, Stolen bases: Eric, Johnson. Struck out by: Flier, 4; Barnes, 1. Hit by pitcher: Barry, 1; Barnes, 1. Wild pitches: Flier, 1; Umpire: Lemons. Time of game: 1:25.

Sigma Upsilon Prize Winners Announced

Winners of the Sigma Upsilon literary prizes have been announced. Richard Smith won the poetry prize with his work, "Pier," and also the story prize with "Haltian Nocturne," both of which have been published in the *Arcturae*. Harry Willis, who wrote "Oasis," which was entered in the N. C. Drama Festival, won the prize for the best play entered.

Due to a lack of material for competition for the essay prize there was no winner announced in this category.

The judges for the contest were: Dr. W. K. Greene, Dr. J. B. Hubbard, and Charles Anderson.

Raymond Speaks

Miss Mary Lois Raymond, of the department of French, was the speaker at the April current event luncheon held Wednesday, April 15, at the Woman's club. Her subject was "International Affairs and their Effect on the United States." The program for the day was in charge of Mrs. A. F. Griggs.

Following Miss Raymond's talk, time was given up to a discussion of the German situation and Hitler. Only one more current events luncheon will be held this year.

EIGHTY-FIRST COMMENCEMENT EXERCISES WILL HAVE DISTINGUISHED GUEST SPEAKERS

(Continued from Page One)
recognized as a preacher almost without peer in the country. He has frequently been referred to as the outstanding man in his denomination, and the citizens of Detroit regard him as one of the city's first celebrities in contributing to this cause.

Dr. Rice's career as a pastor has been distinguished. He was born in Kansas, educated at Baker university, before going to Detroit in 1913. He studied law at the University of Michigan for one year, and in 1894 entered the ministry. He has held positions at Westphalia, Kansas; Fontana, Kansas; Ottawa, Kansas; West Union, Iowa; and Duluth, Minnesota, before going to Detroit in 1913.

During 1917-18 Dr. Rice spent five months in Europe among the soldiers as a special representative of the International Y. M. C. A. He has received honorary D.D. and Litt.D. degrees from Iowa Iowa university and Alhambra (Michigan) college. Among the best known books by Dr. Rice are "Dust and Destiny," "The Expected Christ," "Piercing the Veil," "The Advantage of a Handicap," "To Know Him," and "A Discontented Optimist."

Ray Doty Elected Head Cheerleader

In the run-off election held April 13, Ray Doty, of Rogersville, Tennessee, was elected head cheerleader, defeating Fred W. Sen, who had advanced with him from the first day balloting. There were five candidates for the office.

Doty, a rising junior has been a member of the cheer-leading corps for the last two years.

Dope Shop Sponsors Ping-Pong Tourney

Entries for a tournament to decide the championship of Duke university in Ping-Pong are now being received in the Dope Shop. The tournament will begin as soon as sixty-four entries are received, and will last over a period of three days. It is hoped that the matches can begin by Thursday morning. An entrance fee of 25 cents per player is charged and cups will be given the winner and runner-up. Everyone interested is urged to enter at once.

STUDENT VOLUNTEER GROUP STAGE CAMPAIGN SOON

Containing their project of supporting health work in Egyptian villages, the Student Volunteer group will next week conduct another campaign on both campuses to interest students and faculty members in contributing to this cause.

Every summer students from the American University at Cairo make tours of the small Egyptian villages giving health talks and distributing literature. Conditions in these villages are deplorable since some of the inhabitants know the simplest rules of health.

Last year the Duke university group together with the aid of other religious organizations on the campus, raised about seventy-five dollars for the carrying out of this work. This sum was used last summer, and by means of it some 80,000 people were taught the fundamental rules of health and saved from disease and death.

DUKE IS HOST AT ANNUAL MEET OF RELIGIOUS GROUP

(Continued from page One)
"o'clock in the morning in the East Duke 'Y' hall, where David Porter makes his first formal appearance before the delegates. Mr. Porter's topic will be "Spiritual Adjustment and Growth in the Individual." Discussion group meetings led by students and meeting in East Duke building rooms are to follow Mr. Porter's address.

In the afternoon program more group gatherings and picture taking of the entire conference are scheduled. Claude Nelson and Miss Elizabeth Smith are in charge of the groups for the afternoon. Following this a business session will be held, to be followed by a picnic supper in the social hall of the Men's Union on the West campus. Closing the day's sessions, Mr. Porter will discuss the spiritual implications of the association's objectives.

The final day's program consists of another gathering of representatives under the direction of Miss Clapp at 9:30 Sunday morning in the social hall of the

Paramount
THEATRE
Friday-Saturday
Too Big For Words!

Totally DIFFERENT from any picture ever produced.

1 to 15c
After 2 25c

with Ralph Bellamy
Paul O'Brien
Glenn Stewart
Slim Summerville
Lillian Bond

Last Times Today
DOROTHY AND AN IN "BONDAGE"

Today
Friday
Saturday

WHILE A CITY SHRIEKS IN TERROR

...an apocalyptic monster from the prehistoric world...terrific attack by woman's beauty...cruel over stress and rooftop...wrecking auto...breaking wall!

On-leaping the maiden imagination! Out-shrieking the wildest thrill!

EDGAR WALLACE and MERIAN C. COOPER

THEY ARE THE MOST FAMOUS AND MOST SUCCESSFUL OF THE AGE!

Men's Union. This will be followed by attendance at the university workshop in the Duke chapel at the regular hour. Dr. Hickman will deliver the message. This concludes the annual conference of the state groups of the Young Men's and Young Women's Christian associations.

BOARD WILL NAME NEW STAFF HEADS IN FRIDAY SESSION

(Continued from page One)
The Chronicle: Bruce Hight and Robert Vaughn, next, are expected to be Rivera and Elizabeth Sellers, co-representatives, from the present membership.

The results of Friday's elections will be made public directly following the meeting. These and the other staff elections will be announced in the next issue of the Chronicle.

CAMP PREPARING PRODUCTION FOR MAY DAY EVENT

(Continued from Page One)
available to date.

The scenery work has been progressing satisfactorily under the direction of Sam Watson and promises to be one of the most complete sets ever used by the Players. Costumes arrive next week, dress rehearsals commencing, and on May 16th, the Duke Players hope to present a fitting climax to a hard but successful year.

INITIAL DUKE ENGINEERING SHOW TO OPEN TOMORROW

(Continued from page One)
will have many exhibits showing common electrical phenomena in novel and fascinating forms. Electromagnetic induction is demonstrated by means of a mysterious map of Durham. This map

Get Ads Results

CLASSIFIED RATES only 2¢ per word, with 3¢c being the minimum charge for one insertion. Turn all classified ads over to Tom Murray, G.M. or leave at Chronicle office. Co-eds leave their ads with Frances Turner, Alphonse House.

DELICIOUS HOME-MADE CHEWING Taffy, 1¢c. Flier with every one-pound purchase of our life insurance. Special on Fridays and Saturdays only. Neuman Candy Company, 60 West Main street.

TYING, GENERAL COPY OR types work by an experienced commercial typist. Reasonable and guaranteed safe action. Call or bring your work to Miss Maude Neuhoff, Montgomery Ward & Co.

"A DIFFERENT STORY" SHAMPOO and finger wave, 50c. American Beauty Shop, 345 W. Main St. (Right at First Point).

BUY YOUR MUSICAL INSTRUMENTS at L. K. Schmidt's place, 343½ West Main Street. Repair work and supplies for instruments done well and reasonably. We are in connection with American Beauty Shop.

LOST: WHITE GOLD ELGIN POCKET watch, Flinder place return to Quadrangle box office. Living symbol of one who was dear to owner. REWARD. E. R. Troader, J-209. Box 4125.

WILL SELL YOUR OLD SECOND hand books for you at the best price obtainable. My commission will be only 15%. Call Bill Joyner, Phone 377.

ONE "SEAT OF HEALTH" ROWING machine, practically new, cost \$80.00, will sell for \$23.00. Bill Joyner, Phone 377.

1 to 2 25c

1 to 2 25c

1 to 2 25c

1 to 2 25c

1 to 2 25c

1 to 2 25c

1 to 2 25c

lying flat on a table, is covered by a large piece of plate glass. When a small electric light bulb is moved over the top of it will mysteriously light up. It is passed over the Duke campus. The nearest thing to perpetual motion shown here by the electrical students. An coil of iron pin played by it, even supports slowly turns, hour in and hour out, with no apparent propelling force.

Along similar, wired lines, motors will be started with no apparent starting forces, and lights will be flashed with no wires to conduct the current to them.

A demonstration of military aspect will be the firing of an electromagnetic cannon. The mere closing of a switch will about a projectile several yards with no noise or smoke. Short wave radio station, WAUW, will be in operation, and the visitors may send messages to friends in other towns where contact can be made. Oscillographs, instruments on which one may see a picture of electricity, will be in evidence for the curious.

Another strange machine will show a picture of human voice waves. Visitors may talk, sing, or whisper into a transmitter and a reproduction of the voice will be shown on an oscilloscope. An electrical organ, a complete 20-mile telephone set, a beautiful color slide, and a loudspeaker over which music will be played for the entertainment of guests, in addition to half the East campus, will also be features of the electrical display.

Included in the air and internal combustion engine laboratory equipment will be a large electric motor driven Watson gas compressor, a model of a Ford gasoline engine and dynamometer test set, a Neptune water meter testing outfit.

The steam engineering laboratory in Ashby hall, equipped with two steam engines, which will be running, and indicator cards, will be on display to show visitors how steam actually is operated.

SPRING AND SUMMER ARRIVALS
The Young Mens Shop
Just received large shipment pre-shrunk undershirts

S LACKS
1.95 pair

Hound's Tooth Plaid
Flannel shirts made with double plaid, best quality high rise, especially priced at...

Ganther Wilkes
on unusual special trousers...

Linen Knickers
plus size at eight...

Linen Trousers
(one-dollar)
1.95 and 2.95

WHITE DUCK or stripe washable trousers. Just the thing for tennis or summer wear...

Summer Sleeveless Sweaters
1.00 Others up to 1.95

White Tennis Oxford
1.35 pair

AS unusual variety of sport shirts to select from
Burglar baggy shirts...

Zipper polo shirts
50c

McVadon Sports shirts
85c

Cerge Sale Oxford
We have just received a large selection of cerge and rope oxford shirts in white or combinations...

3.45 and 3.65

The Young Men's Shop

ing inside the engine cylinders. The Mallak indicators are used as these instruments are the best obtainable. One of the special features of this laboratory is a Brown Electric Foremeter which can be connected to show the total steam flowing to all the machines in the laboratory, or may be connected so as to show the steam flowing to any piece of equipment independently. A very strong turbine, a steam injector with the necessary tanks and valves for accurate testing, a steam siphon, and a thermometer calibration apparatus will be shown. D. W. Mitchell, C. C. Cole and John Sharpless will be in charge of this exhibition.

Included in the air and internal combustion engine laboratory equipment will be a large electric motor driven Watson gas compressor, a model of a Ford gasoline engine and dynamometer test set, a Neptune water meter testing outfit.

FOR RENT
Six-room brick house just outside city limit on Chapel Hill Road.
G. C. Ferrell
Apply Roscoe-Griffin Shoe Co.

Smart Frocks!
For CLASS CAMPUS FORMAL WEAR
Durham's newest shop catering to the smartly dressed young women offers a variety of clothes for every occasion... and extremely low priced—
Tailored Cottons from \$1.95 up
Smart Silk and Novelty Fabrics \$2.95 up

POLLY NEALEN'S
"Smart Women's Apparel"
336 W. Main Street

STUDENTS!!
Don't Write---
TYPEWRITE!!

Something you have always wanted for your homework, thesis, etc. A GENUINE FACTORY RECONDITIONED STANDARD UNDERWOOD TYPEWRITER at a price that WARDS and only WARDS can offer you. THIS SPECIAL OFFER GOOD FOR ONLY ONE WEEK

\$5 DOWN
Small Carrying Charge
17¢ per day
pays for the world's fastest and most popular type-writer.
Originally (new) \$102.50
Save \$75.33

Ward Week SALE! Save Over 15% Commander BATTERY
\$349 with old battery
Save over 15%! It has 13 heavy lead oxide plates. It is Guaranteed 12 Months. Meets specification of the Society of Automotive Engineers. Made in our own winter weathered battery. This Special Price for Ward Week Only. Come! Buy! Save!

Ward Week SALE! Save 30%! New 5-Tube RADIO! New Design! Never Shown Before! Created For Ward Week!

\$16.95
Complete With Tubes and Aerial!
This set would ordinarily sell for \$20! It's an Airline Super-heterodyne that weighs only 10 pounds—is only 13 inches long.

Brings in not only regular broadcasts, but also police calls, C. D. C. currents, plays DOWN 10 METERS. It operates on A, C, or D. It has Super Dynamic Speaker and Automatic Volume Control. It is licensed by RCA and Hammett.

Montgomery Ward & Co.

WE INVITE Women of Duke University TO SHOP AT ELLIS STONE'S

Because: We always make it a point to carry youthful clothes, which young women like to wear... Clothes of quality, just expensive enough to be individual.

Because: We feel that at this store assortments are larger and styles are more varied making selection more satisfying.

Because: The Personnel of Ellis Stone & Company is always genuinely pleased and eager to be helpful when women of Duke University visit our store.

Ellis Stone & Co.
Durham's Best Store
SINCE 1886

Newly Chosen Officers of Y Are Installed

Formal installation of Y. M. C. A. officers for 1933-34 took place at seven o'clock Tuesday evening in the Y office at the regular meeting of the cabinet. The new officers are: Pardee Bush, president; Russell Herbert, vice-president; David Bangs, secretary; and Charles Beatty, treasurer. The retiring officers were: Curtis Spence, president; Edwin Kellam, vice-president; John Myers, secretary; and Charles Derrick, treasurer.

Parade addresses were made by Curtis Spence and Edwin Kellam. Pardee Bush made a response for the new officers. During the coming month the new president will have the task of organizing his cabinet, which he will choose from the Y membership.

The Y cabinet is made up of outstanding members of the Freshman Fraternity council. These men will serve as assistants to the committee responsible to the president. Members of the rising junior and senior classes who have been active in Y work since entering college are chosen as the chairman of the fourteen committees which make up the cabinet and form the nucleus for the work of the entire Y. M. C. A.

NEW SANDALS MEMBERS HOLD ELECTION MEETING

A meeting of the new members of Sandals, sophomore honorary society for women, was held Friday, April 21, in the student government office. Jean Rinehimer was elected president of the group at this time, and Jean Bird, secretary.

The president appointed four groups, and selected a chairman for each group.

These chairman are: Betty Voughtin, Virginia Hardin, Dorothy Caldwell, and Katherine Buice. Formal recognition of the new Sandals was given at a banquet honoring them on April 18 at this time. Duke Baldwin, Louisa Hooker, and June Bailey, retiring president of Sandals, welcomed the new members, who were afterwards sworn in.

The new order is composed of the following girls: Lisa Abernathy, Katherine Buice, Dorothy Caldwell, Margaret Cunningham, Dorothy Flebbe, Dorothy Gray, Helen Gray, Katherine Gooden, Jane Halliday, Virginia Hardin, Sarah Louise Jordan, Gretchen Little, Rachel McCall, Emily Lou Morton, Annie Laurie Newsum, Betty Parks, Ruth Phillips, Jean Rinehimer, and Betty Voughtin.

DEVILS DEFEAT N. C. STATE, 5-4 (Continued from page five)

Coach of Wagner's grounders, and Thompson's second straight hit. State's lone scoring throw occurred in the seventh count. Duke of State got a life on Michael's mace, went to second on an infield out, and reached third the Duke Jordan, Gretchen Little, Rachel McCall, Emily Lou Morton, Annie Laurie Newsum, Betty Parks, Ruth Phillips, Jean Rinehimer, and Betty Voughtin.

State's lone scoring throw occurred in the seventh count. Duke of State got a life on Michael's mace, went to second on an infield out, and reached third the Duke Jordan, Gretchen Little, Rachel McCall, Emily Lou Morton, Annie Laurie Newsum, Betty Parks, Ruth Phillips, Jean Rinehimer, and Betty Voughtin.

NEW SANDALS MEMBERS HOLD ELECTION MEETING

A meeting of the new members of Sandals, sophomore honorary society for women, was held Friday, April 21, in the student government office. Jean Rinehimer was elected president of the group at this time, and Jean Bird, secretary.

The president appointed four groups, and selected a chairman for each group.

Combs, p. 3 0 2
Totals 30 5 7
abatted for Woods in eighth.
State 000 000 000-0
Errors: Roach, Cauten, Lambert, Wenz. Two base hit: Michael, Sacrifice.
Double play: Lins to Lambert to Cauten to Lambert; also on balls Combs 1, Lins 1, Seitz 1. Struck out: Combs 1, Lins 1, Seitz 1. Left on base: State 6, Duke 4. Hits: Lins 8 in 7, Seitz 2 in 1. Losing pitcher: Lins. Time: 1:35. Umpire: Morgan.

GUESS WHAT!
(Continued from page five)
be allowed three drives, three short shots, and three puts. The entries for this sport are now awaiting your pleasure, golf fans.

All members of the freshman and varsity tennis squads will be the only men in Duke university that will be ineligible for the spring tennis tournament. Coach General has announced that this sport will begin very soon now.

The weather of the past week has interfered with the playground band. The intramural department will appreciate the cooperation of all the teams in the various leagues in playing off of the postponed games so that the original schedule can be resumed. This is necessary since there is a great number of games to be played and the time left is very short.

THOUGHTS FROM THE SIDELINES
(Continued from page five)

hated but then played some brilliant tennis to maneuver Hines completely off the court, only to drive a smash into the baseline.

Seven state championships in one year! Not so bad for Duke. Blue Devils teams have won titles in football, basketball, cross-country, boxing, swimming, outdoor track, and golf. The track team is favored to win both the state and Southern

Conference championships and the baseball team has an excellent bid for the same honors. The freshmen have also had their share in garnering state laurels for Duke.

Congratulations are in order for the athletic coaching staff of the university for such a showing. Their cooperation with this department has been much appreciated. The publicity staff has been especially helpful in getting news. Ted Mann, Duke's sports news hound, is God's gift to sports editors. Thanks, Ted, and now to bed.

And now to bed.

DUKE FIGHTS HOST TO TRACK TEAMS OF SOUTH MAY 26
(Continued from page five)

batle it out for honors in the Dash, when Captain Brownlee, of Duke, Gordon Lynn, of Clemson, and Karl Wemyer, of Maryland, take the mark in the 100-yard and 220-yard dashes. Captain Brownlee will also compete in the 220-yard low hurdle. Captain Eli Flebbe, of W. & L., will be running in the high and low hurdle events. In the middle distance Duke will present two fine runners in Palmer, 440 man, and Bradshaw, Southern conference outdoor record holder in the 800.

In the field events the outstanding stars will be Halton LeGore, of the University of North Carolina, in the javelin; and Ray Hays, of N. C. State, Tom Craig, of South Carolina, and Oscar Mullis, of the University of North Carolina, in the shot put.

CAROLINA SWEEPS N. C. TOURNAMENT TO REGAIN TITLE
(Continued from page five)

have control of the tourney. The semi-finals and finals are yet to be played, with Harris, Taylor, and Kunkle, of Duke, and Sobel, Carolina, left in the field. Harris advanced over Lynch, U. N. C., and Hennessey, Duke, while the semifinal opponent, Taylor, won from Brown, State, and Hamilton, Duke. Sobel

defeated Kellmeyer and Parsons, Duke, to oppose Kunkle.

Out of the eight freshmen doubles teams, again the semi-finals and the finals are left to be played. Three Duke teams have advanced—Harris-Parsons, Kunkle-Taylor, Kellmeyer-Hennessey—while Carolina has the lone survivor, the Sobel-Lynch team.

It was a step forward in tennis circles for Duke to secure the State tourney on its own courts. Usually held on Carson's grounds, the tournament was transferred, due to the fact that U. N. C.'s Easter vacation continued through the dates set. With capable supervision by the coach and manager of the tennis team, matches were run off with few hitches—an important factor in the success of the 1933 State championship tournament.

BASEBALLERS GET SURPRISE DEFEAT
(Continued from page five)

run rather handily, 14-4. Johnny Marston, an intangible Blue Devil, was the big factor in Duke's defeat. He yielded only nine hits and was in command of the situation from the start, as the Bulls garnered six runs in the first.

In his second contest, Reynolds may pitched shut-out ball to put the Bulls down in their tracks while his team mates were collecting seven hits and as many runs. The line-up for the professionals was composed of rookies, Archie Cochrane, brother of the famous catcher and erstwhile sports writer, played both contests for the Braves and showed up nicely at first base.

Michael, Mitchell, and Hendrickson all got three hits apiece in the two trays to lead the Duke offense.

THREE VICTORIES FEATURE EASTER BASEBALL SERIES
(Continued from page five)

little need be said about the Monday double-header with the Old Lions because the fact that the Blue Devils hit

hard, fielded perfectly, and got the best of pitching from Messrs. Coombs and Flinn; hobbyed through hits and was invincible at all times, while "Duke" had things all his own way in the second game.

Michael and Wagner led the Duke team at the bat with long and timely hits. On the field the team handled 17 chances without the semblance of a miscue. The whole team looked like a bunch of professionals in the way they handled difficult ground balls and bunched their hits for runs.

GOLFERS CONTINUE UNUSUAL SPORTS SEASON FOR DUKE
(Continued from page five)

Total his victories 140 for the 36 holes. The Blue Devils put up a splendid uphill fight when they took the team title. They were far behind at the end of the first six, five strokes in the rear at the end of the 18, but recovered remarkably and were well ahead at the end of the 27th, keeping their lead to take the championship.

Summary
Duke's scoring for the team title: Storm, 120; Parsons, 125; Caldwell, 125; Sullivan, 126. Carolina's scoring: Storm, 125; Parsons, 125; Caldwell, 125; Sullivan, 126.

The entire week scores:
Storm, North Carolina—38-43-38-144
Sullivan, Duke—37-38-37-152
Parsons, Duke—38-37-40-155
Lester, North Carolina—37-38-40-155
Newsum, N. C. State—41-37-39-159

Wagner, Davidson—37-42-39-158
Cramer, North Carolina—41-38-45-162
T. Caldwell, Davidson—42-42-36-162
J. Caldwell, Duke—40-41-39-163
Parsons, N. C. State—40-42-40-163
Manson, Davidson—42-37-40-163
Michael, Carolina—44-41-41-168
Thompson, Davidson—43-44-41-169
O'Brien, Carolina—43-44-44-174
Strom, State—43-45-45-174
Him, State—43-45-45-177
Harris, Carolina—44-40-48-177
Bridges, Carolina—44-42—
Berry, Duke—44-47—

DAVIDSON BEATEN BY DUKE
(Continued from page five)

his winning holes by downing MacManus of the Wildcats, six and four, making his seventh consecutive victory. Caldwell and Sullivan gave Duke its necessary win in foursome play when they defeated Thompson and MacManus of Davidson three up, after Peacock and Storm had fallen to Tom Caldwell and Wagner of the Wildcats.

Wagner, Davidson (2), defeated Peacock (1), one up; Tom Caldwell, Davidson (2), defeated Storm (5), three and two; Jane Caldwell, Duke (2), defeated Thompson (1), four and three; Sullivan, Duke (2), defeated MacManus (0), six and four; Peacocksman Wagner-Caldwell, Davidson (2), defeated Peacock-Strom (1), one up; Caldwell-Sullivan, Duke (3), defeated MacManus-Thompson (0), three up.

FREE — FREE — FREE
THURSDAY — FRIDAY — SATURDAY
We will give to Duke University students free 100 rolls of Kodak film, sizes 126 and 135.

RAMSEY STUDIO
205½ West Main Street

TAPP AND WHITE GARAGE
General Repair Work on All Cars
Storage by the Day, Week or Month Authorized Studebaker Service
DIAL F-2771 ORANGE STREET

IT'S FUN TO BE FOOLED..

IT TELLS IN THE PAPER HERE HOW A MAGICIAN MAKES A BIG BALL ROLL UPHILL.

NOW HIS THUMBS ARE TIED UP GOOD AND TIGHT ALL RIGHT, ALL TIGHT.

THE HOOPS ARE O.K.

WHAT STAN SAW LAST NIGHT.

THAT'S NOTHING. LAST NIGHT I SAW A MAGICIAN CATCH SIX HOOPS ON ONE ARM WITH HIS THUMBS TIED TOGETHER.

HOW COULD HE DO IT? STAN?

IT'S SIMPLE — IF YOU KNOW HOW.

YOU'RE AN OLD SHOONIE WHEN IT COMES TO TRICKS, STAN. HAVE A CIGARETTE?

I WON'T SMOKE ONE OF THOSE, EVEN FOR YOU, FRANK. THEY ARE TASTELESS.

TO WOMEN ONLY

ARE YOU ONE OF THOSE GIRLS LIKE FRANK WHO HAS SOMETHING MISSED THE PLEASURE OF SMOKING CAMELS? BETTER TRY THEM. YOU'LL ENJOY THEIR MILDNESS. THE ADDED PLEASURE THEY GIVE.

IT'S THE BEST TASTING CIGARETTE I EVER SMOKED.

IT'S THE TOBACCO THAT COUNTS, FRANK.

THEY ARE THE ONLY KIND I EVER TRIED. WHAT DO YOU RECOMMEND?

HAVE A CAMEL. CAMELS ARE MADE FROM MORE EXPENSIVE TOBACCOS — AND THEY ARE MILD WITHOUT BEING INSIPID.

SLIP TIP FIRST FINGER BEHIND THUMBS TO GET SLACK. BRACE FINGERSTOCK TO PULL HARD AND TIE A GOOD HARD KNOT.

SLIP THUMB OUT TO CATCH HOOPS!

TURN THUMBS DOWN FOR VOLUNTARY ASSISTANCE TO TIE THE KNOT ON TOP OF THUMBS.

SHOW AUDIENCE THUMBS AND CORD.

IT'S MORE FUN TO KNOW

Camels are made from finer, MORE EXPENSIVE tobaccos than any other popular brand. Hence they are mild, easy on the throat... yet full of flavor and enjoyment.

TO WOMEN ONLY

ARE YOU ONE OF THOSE GIRLS LIKE FRANK WHO HAS SOMETHING MISSED THE PLEASURE OF SMOKING CAMELS? BETTER TRY THEM. YOU'LL ENJOY THEIR MILDNESS. THE ADDED PLEASURE THEY GIVE.

IT'S THE BEST TASTING CIGARETTE I EVER SMOKED.

IT'S THE TOBACCO THAT COUNTS, FRANK.

THEY ARE THE ONLY KIND I EVER TRIED. WHAT DO YOU RECOMMEND?

HAVE A CAMEL. CAMELS ARE MADE FROM MORE EXPENSIVE TOBACCOS — AND THEY ARE MILD WITHOUT BEING INSIPID.

SLIP TIP FIRST FINGER BEHIND THUMBS TO GET SLACK. BRACE FINGERSTOCK TO PULL HARD AND TIE A GOOD HARD KNOT.

SLIP THUMB OUT TO CATCH HOOPS!

TURN THUMBS DOWN FOR VOLUNTARY ASSISTANCE TO TIE THE KNOT ON TOP OF THUMBS.

SHOW AUDIENCE THUMBS AND CORD.

NO TRICKS IN CAMELS — JUST COSTLIER TOBACCOS

Matinee 10c
Night 15c

Thurs.—Fri. Elton Lamb Paul Lukas
"A PASSPORT TO HELL"

Saturday
Back Stage in "RANGE FIND"

Last chapter "Devil Horse"

Sun.—Tues.
Wagner-Baxter in "Dangerously Yours"

Wednesday
"Hotel Continental"

CRITERION THEATRE

Try Our New Shoe Repairing Service

We have made a change of shop in order to be able to offer you better workmanship. And we'll give the new service, and the—

PRICES ARE REASONABLE

Leather Halfsoles.....	75c and \$1.00
The 75c sole is good leather, but not the best. The \$1.00 sole is a higher grade of leather. Please state which price sole is desired when our representative calls for your work.	
Chrome Halfsoles.....	\$1.00
Purce Halfsoles.....	1.50
Rubber Heels.....	.35
Leather Heels.....	.35
Leather Wholesoles and Leather or Rubber Heels \$2.00	

Turn all shoe repairing work over to our representatives and we will give you quick, efficient service.

DUKE UNIVERSITY LAUNDRY

Ladies' Half Soles 60c