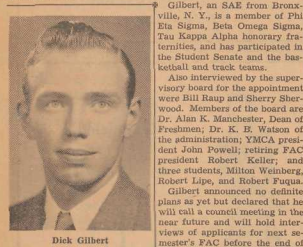


# Is it a case of Cloudbusters in the Navy?

## Keller Quits F&AC Post; Gilbert Named New Head

Dick Gilbert today assumed the reins of the expanded Freshman Advisory Council, following appointment as president by the seven man FAC supervisory board, succeeding Robert Keller.



Dick Gilbert

## Greenwell, Fisher Get Hoof 'n' Horn 'Stand By' Leads

Methel Greenwell, Peggy Fisher, Snowy Ehrhardt, Teeny Roberts, and Al Robertson have been assigned the leading roles in the coming Horn and Horn club production, "Stand By," President Al Robertson announced yesterday.

Methel Greenwell will play the romantic lead, Eileen; Peggy Fisher will play the comedy lead, Jill; Snowy Ehrhardt will play the part of Stu, a colored girl; and "Teeny" Roberts and Al Robertson will play Tony and Al respectively.

The male romantic lead is still undecided, but the choice lies between J. H. H. McCormick, Johnny Alexander, and Clarence Smith.

Several of the minor parts have been assigned, and will be played by Helen Kridger, Beatrice Criger, Ada Jane Buford, and Pete Wills. Eighty-two and one hundred and five boys expressed their desire to work in or on the play.

The leads have already been given a copy of the script, and are expected to know their parts before rehearsals begin. It will be impossible to begin the actual rehearsals until after the examination period is over, Robertson stated.

The play will be produced on the middle of December, and the proceeds will be donated to some service organization. It will run for two nights on campus, and plans are being made to show it at Camp Butte.

Al Bell, who formerly worked with both Vaughn Monroe and Jimmy Lunford, has been assigned the arrangements of the music, and Sammy Fletcher is expected to play.

## September Archive Comes This Week

"It will be a completely new, streamlined Archive, that will hit the campus this week," said business manager Hartwell Cash today, as editors and business staff completed work on the magazine.

New features of the magazine will be a College Humor section, similar to the style of the old Duke "Y" Digest, articles on the Navy, comics, and poetry. For the first issue, Phil Glover, anonymous appreciation columnist, says his impression of the Duke "Y" Digest is "a humorous little article, 'So this is the Duke Y' and 'The Duke Y' and 'Miss Available' are the good problem, pro and con.

## Students Register Monday

Registration for the November semester will open Monday morning in the Administration Building for all students except upperclass engineers and freshmen who entered college for the first time July 1.

Schedules announced by Dean H. J. Herring is as follows: October 4-7: All students who will remain in college only one semester.

October 8-11: All other students, except upperclass engineers and freshmen.

Hours of registration are: 9-12:30 a.m. and 2-4:30 p.m., except October 9.

Students will then fill in white course cards according to the administration building at their first period, procure a previously-filled out registration blank, two course cards and a class schedule.

They will then fill in white course cards according to the administration building at their first period, procure a previously-filled out registration blank, two course cards and a class schedule.

They will then fill in white course cards according to the administration building at their first period, procure a previously-filled out registration blank, two course cards and a class schedule.

They will then fill in white course cards according to the administration building at their first period, procure a previously-filled out registration blank, two course cards and a class schedule.

They will then fill in white course cards according to the administration building at their first period, procure a previously-filled out registration blank, two course cards and a class schedule.

They will then fill in white course cards according to the administration building at their first period, procure a previously-filled out registration blank, two course cards and a class schedule.

They will then fill in white course cards according to the administration building at their first period, procure a previously-filled out registration blank, two course cards and a class schedule.

They will then fill in white course cards according to the administration building at their first period, procure a previously-filled out registration blank, two course cards and a class schedule.

They will then fill in white course cards according to the administration building at their first period, procure a previously-filled out registration blank, two course cards and a class schedule.

They will then fill in white course cards according to the administration building at their first period, procure a previously-filled out registration blank, two course cards and a class schedule.

They will then fill in white course cards according to the administration building at their first period, procure a previously-filled out registration blank, two course cards and a class schedule.

They will then fill in white course cards according to the administration building at their first period, procure a previously-filled out registration blank, two course cards and a class schedule.

They will then fill in white course cards according to the administration building at their first period, procure a previously-filled out registration blank, two course cards and a class schedule.

They will then fill in white course cards according to the administration building at their first period, procure a previously-filled out registration blank, two course cards and a class schedule.

They will then fill in white course cards according to the administration building at their first period, procure a previously-filled out registration blank, two course cards and a class schedule.

They will then fill in white course cards according to the administration building at their first period, procure a previously-filled out registration blank, two course cards and a class schedule.

They will then fill in white course cards according to the administration building at their first period, procure a previously-filled out registration blank, two course cards and a class schedule.

They will then fill in white course cards according to the administration building at their first period, procure a previously-filled out registration blank, two course cards and a class schedule.



Shown above are fifteen of the eighteen students elected to Phi Beta Kappa for the past semester. From left to right they are: Shirley Elaine Bloom, Edward Bernard Bregan, Beale Alton Cox, Shirley Louise Dickson, Joseph Patten Foley, Phyllis Marie Gardner, Anne Shirley Helmick, Jack Katzenstein, Robert Vincent Nassim, Edwin Polakoff, Shirley Mary Spencer, Bart Nelson Stephens, Evelyn Virginia Trudell, Margaret Elizabeth Warren, and Bruno Zinta. Not shown above are Joyce Thresher, Robert Roth Garrett, and Lyle McDowell Allen.

## Phi Beta Kappa To Initiate Eighteen Seniors This Fall

Eighteen seniors will be initiated into Phi Beta Kappa, national honorary scholastic fraternity, at the annual winter ceremonies, to be held this year on October 13.

Dr. J. J. Spengler, professor of Entomology who has recently returned from a year's leave of absence in the service of the G. O. P. A., will speak following the initiation.

A business meeting will precede the ceremony, which will be held in Room 206, West campus union, at 8 p.m.

Any member of Phi Beta Kappa who has recently come to Duke is eligible for participation in the Duke chapter, which is headed by Dr. J. J. Spengler, secretary, and stated, and such members are requested to turn their names in as soon as possible.

A number of the newly elected members will be unable to participate in the ceremony due to their absence from the campus this year. Those who are eligible for initiation are: Arthur Gardner, Moscow, Pa.; Beale Cox, Columbus, Miss.; Robert Garrett, Asheville, N. C.; Lyle Allen, Kirkwood, Mo.; Robert Nassim, East St. Louis, Ill.; Bruno Zinta, Jr., Chappaqua, N. Y.; Barney Stroud, Miami Beach, Fla.; Evelyn Trudell, Pittsburgh, Pa.; Margaret Warren, Shaker Heights, O.; Jack Katzenstein, Shreveport, La.; Nelson Stephens, Newport, R. I.; Shirley Bloom, Miami Beach, Fla.; Edwin Polakoff, Poughkeepsie, N. Y.; Shirley Dickson, Mt. Rainier, Wash.; Phyllis Marie Gardner, N. C.; Joseph Felton, Durham, N. C.; Anne Helmick, Birmingham, Ala.

The fifteen seniors were elected to the national scholastic society in the annual July election.

Kenneth Sanger, rising senior electrical engineer from New York, will head the Duke Student Branch of the American Institute of Physics.

Following election to the post Wednesday night.

Sanger succeeds retiring president Stephen C. Herring, Jr., who has been elected to the post Wednesday night.

Sanger succeeds retiring president Stephen C. Herring, Jr., who has been elected to the post Wednesday night.

Sanger succeeds retiring president Stephen C. Herring, Jr., who has been elected to the post Wednesday night.

Sanger succeeds retiring president Stephen C. Herring, Jr., who has been elected to the post Wednesday night.

Sanger succeeds retiring president Stephen C. Herring, Jr., who has been elected to the post Wednesday night.

Sanger succeeds retiring president Stephen C. Herring, Jr., who has been elected to the post Wednesday night.

Sanger succeeds retiring president Stephen C. Herring, Jr., who has been elected to the post Wednesday night.

Sanger succeeds retiring president Stephen C. Herring, Jr., who has been elected to the post Wednesday night.

Sanger succeeds retiring president Stephen C. Herring, Jr., who has been elected to the post Wednesday night.

## Glee Club To Sing Tonight

Judging from the extent of ticket sales, the audience at tonight's Glee Club concert will be one of the largest in the history of the Club. J. Foster Barnes, Glee Club director, stated yesterday.

Tonight's concert will be unusual in that "Bishop" Barnes will present 65 select members of the Club, one of the largest groups to appear in a Glee Club concert. Members of the Club will appear in Navy and Marine dress uniforms, the civilian wearing dark blue suits.

The curtain will rise at 8:00 in order that sailors in the audience may be able to see the length of a concert is never dull. Captain A. T. Cox has granted permission for men who attended concerts to check in 15 minutes after the concert is over.

Since there are no reserved seats at tonight's concert, students are advised to come early to be assured a good seat. Holiday Yest! Business Manager of the Glee Club remarked yesterday.

The trip for the Glee Club will be next Saturday, when the Club will go to Charlotte to sing at Queen's College.

Dr. Bert Cunningham Dies Suddenly Tuesday; Was Member of Biology Staff

University flags were lowered to half mast Wednesday in reverence to the memory of Dr. Bert Cunningham, Professor of Biology and a member of the faculty since 1916, who died unexpectedly at his home last Tuesday evening.

Dr. Cunningham had gone to his room to rest before Tuesday and later, when he failed to respond to a call to supper, he was found to have died. During the day he went about his usual duties at the University as usual.

Greatly respected by faculty and students alike for his brilliant in his field, Dr. Cunningham had for more than twenty years served the University in a high capacity, and had contributed to numerous publications, especially in the fields of entomology, histology, and related subjects.

At the time of his death he was engaged in putting the final touches on his most recent book. An authoritative work on insect anatomy, which was published in 1927, and several years ago the Duke University Press published his book on "Asexual Bifurcation in Spermatogenesis."

Dr. Bert Cunningham was born in 1871, and the American Society of Natural History.

At the time of his death he was engaged in putting the final touches on his most recent book. An authoritative work on insect anatomy, which was published in 1927, and several years ago the Duke University Press published his book on "Asexual Bifurcation in Spermatogenesis."

At the time of his death he was engaged in putting the final touches on his most recent book. An authoritative work on insect anatomy, which was published in 1927, and several years ago the Duke University Press published his book on "Asexual Bifurcation in Spermatogenesis."

At the time of his death he was engaged in putting the final touches on his most recent book. An authoritative work on insect anatomy, which was published in 1927, and several years ago the Duke University Press published his book on "Asexual Bifurcation in Spermatogenesis."

At the time of his death he was engaged in putting the final touches on his most recent book. An authoritative work on insect anatomy, which was published in 1927, and several years ago the Duke University Press published his book on "Asexual Bifurcation in Spermatogenesis."

At the time of his death he was engaged in putting the final touches on his most recent book. An authoritative work on insect anatomy, which was published in 1927, and several years ago the Duke University Press published his book on "Asexual Bifurcation in Spermatogenesis."

At the time of his death he was engaged in putting the final touches on his most recent book. An authoritative work on insect anatomy, which was published in 1927, and several years ago the Duke University Press published his book on "Asexual Bifurcation in Spermatogenesis."

## Engineers' Ball Tickets On Sale Beginning Today

Tickets for next week's Engineers' Ball went on sale today to engineers on both campuses, as plans for the Saturday dance went ahead.

Sale of tickets to Trinity College students will be through open Wednesday after engineers have had first chance, Chuck Ball, ticket chairman for the Ball, announced today.

Sponsored by Delta Epsilon Sigma, honorary engineers' leadership organization, Saturday night dance will feature the music of Herb Gorton and his Orchestra, Raleigh dance band, Mapp said.

Gorton's aggregation has been playing engagements throughout North Carolina and Virginia for almost a year, having recently appeared at U. P. I. Mid-Summer Formal, and a University of Virginia Fall Prom.

Annual Fall Epsilon Sigma membership into Delta Epsilon Sigma will highlight the dance inasmuch, Mapp said, because it will bear a running account of the Duke-Navy football game between tomorrow, if weather conditions are completed for a remote pickup from the Baltimore north end, Mapp said.

Tickets for the dance are on sale to engineers from Mapp, House, West campus, Reed Stoval, Kephart, and Tom Hatley, Southgate. Tickets will be on sale in Ashbury building Monday to engineers, and to the entire campus in the West campus Union Wednesday afternoon from 2 to 4 p.m.

This will be the third Engineers' Ball in the history of the College Memorial gymnasium, the dance lasting from 8 to 12 p.m. Past Engineers' Balls have been held in Southgate dormitory gymnasium.

Facing this array of stars will be the powerful Duke squad, led by a sparkling line and fast backfield. The Cloudbusters will have a tough time keeping the line men as Jamie Myers, Pat Preston, Bob Nanni, and Bill Miller will lead the team he sparked.

The backfield, studded with such outstanding players as Buck Langer, and Jimmy Murphy.

(Continues on page 4)

## Men's Pan-Hellenic To Hold Elections For New Officers

Elections for three Men's Pan-Hellenic officers were on tap for next Thursday, as October graduates will be asked to vote, and further depletion from the ranks of electors officers on the campus.

Already graduated was Pan-Hellenic treasurer Bill Schuchardt, who completed his work in summer school. Next month's commencement will take vice-president Nelson Stephens and secretary Sterling Tucker, leaving Pan-Hell president Tim Moore as the last member of his class serving as an officer.

Electing by the Council will be vice-president and secretary. An advisory board, consisting of members of Herring and Alan K. Manchester, University Secretary C. E. Jordan, and John P. Herring, will be the treasurer, following nominations for the office from the Council.

In calling the Thursday's special meeting, President Moore said that the election was to be present at 6:30 p.m., both for the elections and the 1944 yearbook.

Eligible for officers will be all fraternities men returning to Duke next semester.

## Y Will Sponsor Pre-Game Dances

YMCA Game Dances to the Duke University Press was offered today by John Power, president of the Y, who announced that the Y would sponsor a series of pre-game dances on campus.

At the time of his death he was engaged in putting the final touches on his most recent book. An authoritative work on insect anatomy, which was published in 1927, and several years ago the Duke University Press published his book on "Asexual Bifurcation in Spermatogenesis."

At the time of his death he was engaged in putting the final touches on his most recent book. An authoritative work on insect anatomy, which was published in 1927, and several years ago the Duke University Press published his book on "Asexual Bifurcation in Spermatogenesis."

At the time of his death he was engaged in putting the final touches on his most recent book. An authoritative work on insect anatomy, which was published in 1927, and several years ago the Duke University Press published his book on "Asexual Bifurcation in Spermatogenesis."

At the time of his death he was engaged in putting the final touches on his most recent book. An authoritative work on insect anatomy, which was published in 1927, and several years ago the Duke University Press published his book on "Asexual Bifurcation in Spermatogenesis."

At the time of his death he was engaged in putting the final touches on his most recent book. An authoritative work on insect anatomy, which was published in 1927, and several years ago the Duke University Press published his book on "Asexual Bifurcation in Spermatogenesis."


At the time of his death he was engaged in putting the final touches on his most recent book. An authoritative work on insect anatomy, which was published in 1927, and several years ago the Duke University Press published his book on "Asexual Bifurcation in Spermatogenesis."

*"Where Duke Men Meet"*

**Miller-Bishop Co.**

*112 Corcoran St.*

*Clothes*



For  
Civilian  
and  
Service  
Men

**Send The Chronicle Home**

# Side Lines

By R. M. Johnston

101

Starting a season as a Duke team has never started before, the Blue Devils have now rolled up a total of 101 points in two games. If the Big Blue team keeps going like it is now, it will top its own scoring record of 327 points for one season that it set two years ago. Leading the Devils in yards gained per play is fleet half-back Buddy Mulligan, who has since departed for the Navy Air Corps. Mulligan toted the pigskin only six times, but racked up 143 yards for an average of 23.8 yards per play. He is also credited with the longest run made in the first two games, a 65 yard touchdown sprint against Richmond. Duke also stands high in other columns on the statistics sheet. The Devils have completed eleven out of 24 passes for a total of 243 yards. A creditable punting average of 40.2 yards per try stands on the record book, with Johnny Perry leading the field with his 60 yard punt of last Saturday. Tommy Davis, Duke's steady punter has averaged 37.1 yards per play, with seven boots to his credit. True to form, Bob Gantt has made eleven successful conversions in thirteen tries. Showing the versatility and uniform power of the Devil squad, the scoring has been split between eleven men, one of them, Bob Nanni, being a tackle who scored after recovering a blocked punt. Leading the field in scoring is Mississippi State's Spock Blount who has scored eighteen points. Davis, Spock Murphy, and Bobby Rute have each scored twelve points apiece.

## Break

Last week two men were injured seriously in Soccer practice. That, in itself, is not odd, but the manner in which they were hurt is. It was in a hard practice scrimmage in the early part of the week. A hard-plugging boater, Bob Nietman, went down with a broken shin bone. He was removed from the field and sent to the hospital. A few seconds after the scrimmage was resumed, another player, Frank Rowe, went down. Rowe broke the other leg in almost the same corresponding spot that Nietman's had been broken. In spite of these injuries, though, the 1943 version of the soccer team is undoubtedly the most powerful to be put out on the field by Duke since the sport was started here a few years ago. With seven returning letter-men on the squad, Jerry Gerard has a good nucleus to build around, and with the addition of stars from other squads, this year's season should be successful. Outstanding among the players this year have been Hal Landesberg, goalie, Frank Sedwick, full-back, Jack Staussil, forward, and the Russell twins.

## Chatter

Alex Plasecky, ex-Duke, is now playing with the Washington Redskins . . . strange as it may seem, numbered among the members of Pre-Flight's second team are John Kuzman, All-American tackle from Fordham, Lou Young, captain of Dartmouth's 1940 squad, Bill Krywicki, captain of Fordham's 1939 team, Don Elser, one of Notre Dame's All-Americans, and Bob Kellogg, an All-Southern player from Tulane. What is their first team like if these men are on the second . . . No inter-sectional contests this year for Duke . . . Navy only allows teams to make forty-eight hour trips . . . Then how is George Tech going to play Notre Dame without taking more than allotted amount of time . . . Others can, why can't Duke . . . Bainbridge Navy team is loaded with outstanding players . . . six ex-groes in the starting line, and men like Northwestern's Bill DeCorvont in the backfield . . . Tippy Dye, ex-Ohio State plays with the Carolina Pre-Flight squad . . . The University of Illinois has 1,410 Alumni in the armed services . . . Betting odds around campus say that Duke will beat Pre-Flight by 30 points. We wonder . . .

Friday, October 1, 1943

To gain admittance to tomorrow's football game, it will be necessary for all students to have their Athletic Books with them.

## Trouble Personified



High-scoring lineman for this year's Blue Devils is veteran tackle, Bob Nanni, who romped over the Spiders' goal line for one of Duke's touchdowns last weekend after recovering a blocked punt.

## Croonin' Halfback Captains Whites

By HARRY BARNHART

Leading Coach Harned Caldwell's Duke White squad out to the field against the Pre-Flight "P" team next week will be one of the most unusual football players to perform on the Methodist Plaza in recent years. His name is Jim Borbery, and he's the captain of the Whites.

A marine trainee, Borbery is unusual not merely because he happens to be a better than average ball player but also for the reason that he possesses a personality which has brought him considerable popularity during his two years at Duke. Shading six feet and filling it out with 185 pounds, handsome Jim is just as capable a performer behind a microphone as he is on the gridiron. He's a crooner—and good, too.

And don't think that's not unusual, because footballers who can get up on a stage and Sinatra-ify an audience with an under-the-shower ease are rather rare, at least. Borbery has sung (and wind-cracked) at several Sunday night sing and has been a huge success each time he has appeared. He's the Bing Crosby type—easy-going

and likeable. Like Crosby, his hobbies are typical of his personality. In his spare moments, Jim used to like to collect records, fool around with photography, fish—and sing.

A native of New Brunswick, N. J., Borbery evidenced versatility in high school, as in college. In addition to being co-captain of his football and track teams, he was president of his class as well as of the student body.

(Continues on page 4)

# The Duke Chronicle

# SPORTS

## Quadrangular Meet Opens Season For Devil Harriers

### Booters Drop Opener, 2-1

In their 1943 debut last Wednesday, the Blue Devil Booters lost a hard-fought game to the Cloudbusters from the Carolina Pre-Flight School, 2-1.

After battling through a scoreless first quarter, Joe Koelich, Pre-Flight captain, scored the first point late in the second period after taking a pass from Eddie Jecklin, wing, and working in close to the Devil goal. He slipped the ball past Duke's goalie, Hal Landesberg, when Landesberg came out to attempt to block the kick.

The Duke squad tied up the ball game in the opening seconds of the third quarter on a long pass from Bob Metzler to center forward Jack Staussil, who put the ball between the uprights for the point.

Both teams played on even terms until late in the closing quarter, when a high, booming kick off the toe of Lt. Fontynson set up the wing fully for the Cloudbusters. The long kick was taken by George Morris who fullback, and came in close to score the point.

The play of the Duke forward wall was ragged, all the players missing opportunities to slash through the Pre-Flight defense into scoring territory. Ed Cantin was transferred from his customary fullback position to the halfback slot, and added considerable drive to a failing Duke offense.

The Cloudbusters will invade Duke territory for a return engagement on the afternoon of Wednesday, October 6. The game will be played on the freshman football field.

### Miniatures

BOB NANNI, Tackle, 24, 210, 6 foot, Senior, Pittston, Pa. Among Duke linemen Nanni is one of the hardest worked. Last year Cameron won Nanni more than any other man on the squad except Tom Burns.

Nanni played 167 minutes for the Devils last fall. He got an honorable mention on Up's All-Southern team for his fine work. The nickname, "Sluggo", was acquired during his freshman days on the gridiron.

He's the boy who recovered an Oregon State fumble on the visitor's 45-yard line during the third quarter of the transplanted 1942 Rose Bowl contest.

On October 9 the team traveled to Baltimore to play a Navy squad that has already proved its power by sweeping the Cloudbusters last weekend, 21-0. The Middies are rated as the seventh strongest squad in the nation.

On the following weekend, October 14, comes one of the classic clashes of the Southland, the Duke-Carolina game. In the past, this game has always been unpredictable to sports writers because of the spirit of both teams and the student bodies of the two schools. For many years, the game was preceded by a week of pitched battles between the students of the two institutions.

Shifting the weekend of October 23 because of exams, the current edition of the Blue Devils will play their last game for the semester against the powerful squad from Georgia Tech.

### Blue Devils Face Hard Contests

Preparing for its third game of the current season tomorrow, the Blue Devils are just beginning to really hit the tough part of their season.

After tomorrow's clash with the Cloudbusters of Carolina Pre-Flight School, the Duke squad will face three of its toughest opponents in succession. On October 9 the team travels to Baltimore to play a Navy squad that has already proved its power by sweeping the Cloudbusters last weekend, 21-0. The Middies are rated as the seventh strongest squad in the nation.

On the following weekend, October 14, comes one of the classic clashes of the Southland, the Duke-Carolina game. In the past, this game has always been unpredictable to sports writers because of the spirit of both teams and the student bodies of the two schools. For many years, the game was preceded by a week of pitched battles between the students of the two institutions.

Shifting the weekend of October 23 because of exams, the current edition of the Blue Devils will play their last game for the semester against the powerful squad from Georgia Tech.

Opening their current season tomorrow, the Duke Cross Country team will run against the squads from the University of Virginia, Carolina, and Carolina Pre-Flight tomorrow between the halves of the football game.

Coached by Chief Specialist Aherne, the team has taken shape rapidly, mainly because of the good condition of the men due to the strenuous physical training program that they have all gone through for the last few months.

Outstanding among the harriers are Dave Byrne, a transfer from the University of Illinois, and Bill Palmer, freshman, seen on last spring's Blue Devil track team. Both of these men can cover the four mile course considerably under the thirty minute mark. In time trials, Byrne has run the distance in twenty-six minutes, and Palmer has been close on his heels.

Dick Arrowsmith is another member of the squad to be taken into consideration. Although he is new to the sport, Arrowsmith has covered the rugged overland course well under thirty minutes.

Tomorrow's meet will be the first for the Harriers since the fall of 1941. Last year the sport was dropped from the athletic program of the school because of (Continued on page 4)



luscious lips  
Tussy  
Lipstick  
\$1.00

INDULGE as a girl could wish  
Tussy Lipstick gives brilliant, glowing color that lasts all day long! No smudging, smearing. Choice of shades, including  
Judy Red, Commande, Tom Tom, Red, Fighting Red, Each \$1.00. Plus tax. Nail polish and rouge in matching shades.

ECKERD'S  
122 West Main

## SEND THE CHRONICLE HOME!

IMPORTANT!!! Below is printed a subscription order form for your convenience. Clip, attach remittance, AND MAIL TODAY

JOHN W. HARTMAN Business Manager	
THE DUKE CHRONICLE Box 4698; Duke Station, Durham, N. C.	
Enclosed is remittance for: <input type="checkbox"/> \$2.00 - Six Subscriptions OCTOBER THROUGH MAY Please send THE CHRONICLE to	
Name _____	Date _____
(Please Print Plainly)	
Street _____	
City and State _____	

## "Mums" for the Game

CLAUDE HULL  
Florist  
215 N. Mangum Street

for that . . .

## "PARKER QUINK"

SEE . . .  
THE ROSE AGENCY  
206 Corcoran St.

Were Expert at  
SHOE REPAIR  
WHILE  
U  
WAIT  
"We Deliver"  
Belk-Leggott  
Dept. Store  
318 Main Street

WHILE

U

WAIT

"We Deliver"

Belk-Leggott  
Dept. Store  
318 Main Street

"GOSH—ON THE FRIZ

AGAIN! BET I CAN'T GET A

NEW PEN. MY PARTS ARE

SCARCER!"

"WHY DON'T YOU GET HER

TO PARKER QUINK. JIMMY

IT HAS SOLVEX IN IT TO

PROTECT METAL AND RUBBER

AND KEEPS FINE CLEANS!"

Fountain pens rationed!

To keep your pen writing... use Quink with solvex!

REDUCED drastically by

government order, first-

choice brands of fountain pens

are becoming scarce. The

parts, too, are scarce!

So give your pen real war-

time protection with brilliant,

smooth-writing Parker Quink,

continuity of pens are scarce.

Solvex ends most pen trou-

bles by removing the causes.

FOR V. C. MAIL "Micro-Blue-Black" New Parker Quink in "Micro-Blue

Black, Blue-Black, Royal Blue, Green, Navy, Brown, Red. 2 available shades

Black, Blue, 15¢ and 25¢.

MAKE YOUR DOLLARS BUY WISDOM NOW!

PARKER Quink

THE ONLY INK CONTAINING SOLVEX

Flushes away the gum and

sediment left by inferior inks.

It prevents the corrosion of

metal parts and deterioration

of rubber caused by highly

acidic inks.

Parker Quink with solvex is

ideal for street pens, too! The

Parker Pen Company, Jen-

nerville, Wisconsin, and Toronto,

Canada.

"GOSH—ON THE FRIZ

AGAIN! BET I CAN'T GET A

NEW PEN. MY PARTS ARE

SCARCER!"

"WHY DON'T YOU GET HER

TO PARKER QUINK. JIMMY

IT HAS SOLVEX IN IT TO

PROTECT METAL AND RUBBER

AND KEEPS FINE CLEANS!"

Fountain pens rationed!

To keep your pen writing... use Quink with solvex!

REDUCED drastically by

government order, first-

choice brands of fountain pens

are becoming scarce. The

parts, too, are scarce!

So give your pen real war-

time protection with brilliant,

smooth-writing Parker Quink,

continuity of pens are scarce.

Solvex ends most pen trou-

bles by removing the causes.

FOR V. C. MAIL "Micro-Blue-Black" New Parker Quink in "Micro-Blue

Black, Blue-Black, Royal Blue, Green, Navy, Brown, Red. 2 available shades

Black, Blue, 15¢ and 25¢.

MAKE YOUR DOLLARS BUY WISDOM NOW!

PARKER Quink

THE ONLY INK CONTAINING SOLVEX

Flushes away the gum and

sediment left by inferior inks.

It prevents the corrosion of

metal parts and deterioration

of rubber caused by highly

acidic inks.

Parker Quink with solvex is

ideal for street pens, too! The

Parker Pen Company, Jen-

nerville, Wisconsin, and Toronto,

Canada.

## DO IT NOW!

Order Your Photographs Today from the  
CHIDNOFF STUDIO!



Proofs have to be returned to Chidnoff's by  
mail within week after receiving them.

If proofs are not returned it will be impossible  
for your picture to appear  
in Yearbook.

## CHIDNOFF STUDIO

New York, N. Y.

## CHRISTMAS CARDS

Printed or Engraved

STATIONERY - TICKETS - CARDS  
PROGRAMS - INVITATIONS, ETC.

Dial F-0821

Christian Printing  
Company  
124 W. Parrish Street

# Five Week End Dances Included In Fall WSAB Recreation Plans

The recently chosen 1943-44 WSAB, campus-wide hope as an organization to coordinate the newly-revived recreation program, yesterday released an approved schedule of social functions, including five big week-end dances.

Composed of Charlie Blanchard, Marybelle Adams, Bill Rapp, and Dottie Watkins, the WSAB has approved dances sponsored by seven campus organizations within a week of its organization. The schedule includes the following dances: FAC-Social Standards open dance, Oct. 7; on Friday Oct. 8, the Naval ROTC closed formal tea dance at the Morris St. USO; on Saturday, Oct. 9, the Engineer's Ball in the East campus gymnasium; the Pan-Hel dance, scheduled for Oct. 16, the YMCA dance on Nov. 13; the Coed Ball on Nov. 24; the NROTC ball on Nov. 27; and Ark dances with available orchestras on Saturday evenings.

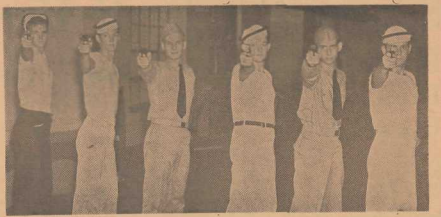
The FAC-Social Standards dance is the last in the series of freshman dances being held this week and next week. It will be open to upperclassmen and will take place in the Ark from 7:30 to 9:30.

The Engineers' Ball next Saturday will occur in the East campus gymnasium from 8 to 10. Tickets will be thrown open to the entire campus Wednesday.

The Pan-Hel dance, scheduled for the weekend of the Carolina game, is awaiting administrative approval regarding later for cleaning up after the dance. The administration is also expected to pass on the question of having a professional orchestra to relieve the band's duty. Sunny Fletcher has pressed Duke Ambassadors.

The YMCA dance November 13 will follow the Virginia game after that afternoon and will be the first big dance sponsored by the YMCA under wartime conditions.

## NROTC Pistol Team



Duke's crack NROTC Pistol team, who recently competed against the Colorado NROTC unit. Left to right: Dan Hedlin, Will Newman, Malley Peller, Bob Johnston, Bill Boren, and Bob Ambrose.

## Stieber Will Sing In Concert Alone Here October 11

Eleanor Stieber, glamorous soprano of the Metropolitan, who was scheduled to sing here a week from next Monday night in joint recital with Norma Cordon, will appear at that time in Page Auditorium to give an entire concert by herself, since Mrs. Cordon has not yet returned from South America where he is on tour.

Mr. Cordon has been so popular in his South American tour that he is unable to return by October 11. He will, however, give a concert at Duke at some uncertain date at no additional expense to holders of season tickets. Those who have season tickets must be sure to save the ticket stub from Miss Stieber's concert, which Cordon will be good when Cordon returns, J. Foster Barnes, director of the concert series, emphasized.

## Pan-Hel Selects Next Two Sundays For Sorority Teas

Next Sunday and the following Sunday have been selected by the Woman's Pan-Hel Council as dates for the regular fall teas. Elsie Cronin, President of the council announced today, because of the shortage of time before the official rush period, November 3, 4, and 5.

The coming parties will be divided into six twenty minute periods between 2 and 4 p.m. Schedule invitations will be sent to the freshmen tonight. Because of the shortage of seating, the Pan-Hel Council has voted a new rotation system, under which each sorority will select a representative to act as hostess on Friday, Saturday, and Sunday nights for dating, and Monday night for sorority meetings. On weekdays the House will not be open to anyone after six p.m.

## —Harriers—

(Continued from page 3) a lack of opponents, participants, and a coach.

The former coach, Hubert (Red) Lewis, entered the armed services early in the season. Few men had returned to the squad and it was necessary to abandon it. The influx of Navy men brought about the revival of the sport.

In addition to tomorrow's opener, the Harriers have two other meets scheduled. The second is against the Navy squad at Annapolis on October 30.

The first meet of the season will be held between halves of the second Duke-Carolina game on November 20 at Chapel Hill. The Duke squad will face the Carolina and Pre-Flight teams in a triangular meet.

## Coed Glee Club Has 150 Members

With a total of almost 150 girls now making up the organization's rolls, the coed Glee Club also is serving to provide 15 women members of the University choir, drawn from the ranks of the group.

Under the leadership of Mrs. J. Foster Barnes, the group is planning concentrated fall rehearsals in anticipation of a possible concert similar to that of the men's organization.

Twelve members of the group are visiting Camp Butler each Sunday to sing before members of the 7th "Lightning" Group in an informal after noon concert.

## —Duke—

(Continued from page 1) Tom Davis, and Lloyd Blount, will find the weak spots in the Pre-Flight line, if there are any. The tricky combination of passing and running that the Devils have used in their past two games will keep the invading team on their toes all at times.

Football starting lineup:  
Duke: K. E. Kieboe, RT, RG, LG, QB, RB, FB, DE, DT, TE, P, K.

## Captain Clay Says:

Dates of between-semester leave for V-12 sailors have not yet been decided definitely, although a leave at that time has been assured.

A decision concerning Christmas leave is pending instructions from the Navy Department, although it has been reported that V-12 cadets at Chapel Hill are expecting a three day leave at that time.

Only those civilians and non-V-12 navy men who took the examination for entrance into the V-12 unit last April will be admitted into the unit in November. Another similar examination will be given November 9 for the March semester.

Navy men will be able to apply for transfer into the Duke NROTC unit in March, although all enlistments were closed last March into the unit. No civilians will be admitted.

## —Crooning—

(Continued from page 3) council. He also wrote the senior play and contributed work to the school paper and yearbook. Don't tell us he's average.

He entered Duke with the intention of studying law, but now he thinks he would like to enter the radio advertising field when the war is over. Last year he was vocal with Charley Switzer.

A member of Pi Kappa Alpha fraternity, Jim has also established an outstanding record in intramural athletics. Awarded a position on the All-Star basketball team, he did a little swimming, too, and won the plunging event in the all-Duke meet. Last spring in the intramural track and field day games, Borbey copped a second place in the half mile, following this with a sensational performance as anchor man for the mile relay team which established a new Duke record.

Now 22 years old, he was a running mate of Buddy Luper on Caldwell's freshman grid eleven two years ago and showed great promise. Last season, as a sophomore, he was given little opportunity to show his stuff. As captain of the White squad, however, this hard-hitting halfback, who is also an accomplished passer, has shown up so well that he will probably be moved up to the varsity before the campaign is ended.

## Outlines for Every Subject Book Exchange

**DURHAM MORNING HERALD**  
and  
**THE DURHAM SUN**  
The Favorite of All Duke Students  
Delivered to Your Room Daily  
See C. N. Northcutt and Robert Evans, H1015  
Student Representatives  
Dial P-115 for Additional Information

# Eiteman Describes Alaskan Travels As OPA Executive

By STEVE SCHWARTZ

One of the most footloose members of the Duke faculty is Dr. Wilford J. Eiteman of the Economics Department, who recently returned from Alaska where, as OPA price executive, he traveled thousands of miles over unexplored terrain by airplane, dog sled, army jeep, and Indian fishing boat.

Dr. Eiteman, in commenting on his trip, said: "I arrived one night at Golena, Alaska, in an official government plane. Climbing from the cabin at dusk onto the chill, snow-covered field, I was at once hailed by an army air corps lieutenant. He came toward me and peered into my face. 'Why, aren't you Professor Eiteman of Duke?' he inquired. 'I took Economics 101 under you in 1940.' Such things are likely to happen in Alaska."

Professor Eiteman is a man whose small physical stature hardly matches his wide and varied experience. He spoke easily at his interviewer and continued to chat quietly about his trip.

"Our inspection trips carried us to all parts of the territory, whose coastline is almost several times longer than that of the United States. One evening we came into Whitehorse, Canada, at 10 p.m. The hotels were full, but one proprietor generally offered to 'rent' two of us half a bed for a night. We tactfully declined, hailed a passing Army jeep and rode out to the Navy barracks. But since we had arrived in an Army conveyance the Navy was reluctant to accommodate us. For a time it looked as if we would have to wrap ourselves into the raw polar bear skin which I had carried with me as a souvenir for three weeks. But we harangued, offered to secure them a much-

needed adding machine, and finally were given the only two available beds, located in a cozy little cell in the town jail.

"Since the plane which had taken us into the town was not available for our departure, the Army took us by train over White Pass to Skagway; here we obtained permission from the Coast Guard to squat on the pier Indian style and hail passing boats. An Army engineer craft soon sped us and carried us back to civilization."

In Nome, Eiteman found snow level to the house tops (Eskimos, incidentally, do not live in igloos). At Fairbanks, he was invited to lecture at the world's northernmost university, the University of Alaska. Near the foot of Mt. McKinley he saw the reindeer that greedily eat Coast-terfild cigarettes and scorn all other treats.

Eiteman lucidly described the varied geography, which ranges in character from the bleak, cold "gold" regions of the Yukon, to the fertile Mannooka Valley that is warmed by ocean currents.

Within a year's time, he learned that an Alaskan price executive is expected to be an explorer, aviator, and sailor, as well as an economist.

## "If its from Roy's Its Guaranteed."

**RAY'S Inc.**  
Watches—Diamonds  
Jewelry  
211 W. Main St.

## KA's Entertain In Ark Saturday

Kappa Alpha fraternity will play host at tomorrow night's Ark dance.

Charlie Switzer's six-piece band will furnish the music.



By Don Marlon

The S.G.A. dance was successful, but that old story is a misnomer. Which one of the cuter emcees left early on pretenses of a headache? And then there's the gal who was about to return his pin, but accepted a ring instead.

A couple that's wrapped up in themselves, Primus and Hanson. . . . Everyone is glad to have "The" Snyder back—especially Hank. . . . New arrivals at Van Stratten's include Piast Sport shirts, Arley hose, and some smart English wool ties.

Ten easy lessons on "How to Go Steady" by C. Switzer. . . . Unknown to each other, three Coeds anxiously wait for the great Bullock's return. . . . In closing, a tip to George, wise up fellow! You two are making a mistake.

**van Straaten's**  
211 W. Main St.

## Quadrangle Pictures

**Saturday**  
"Dr. Gillespie's New Assistant"

House opens immediately after the game

## Wednesday

"Andy Hardy's Double Life"

with MICKEY ROONEY and LEWIS STONE  
Features 3:45, 5:45 and 7:45

## STUDENTS!

Make use of those extra periods to enroll for Shortland and Typing Daily; morning of afternoon. Evenings—each Tuesday and Thursday to suit your convenience.

Special group rates—bring a number of your friends

## KENNEDY'S COMMERCIAL SCHOOL

Now centrally located in the TRUST BUILDING  
Elevator service, fluorescent lights.  
Phone N-4221

## AT YOUR FAVORITE THEATRE! CENTER

Sat.-Tues.

"This Is the Army"

Wed.-Sat.

"Hers to Hold"

with DEANNA DURBIN

## CAROLINA

Sat.

"STORMY WEATHER"

Sun.-Tues.

"HOLY MATRIMONY"

with MONTE WOOLLEY and GRACIE FIELDS

## RIALTO

Wed.-Thurs.

"LADY BODYGUARD"

Sun.-Mon.

"FIVE GRAVES TO CAIRO"

with ERIC VON STROHEN

Tues.

"TENNESSEE JOHNSON"

## Laundry Stamps

Greeting Cards  
Engineer's Supplies  
Stationery  
Notebooks  
Picture Frames  
Calendar Pads  
Diaries  
Address Books  
Card Index Files  
Photo Mailers  
Typewriter Ribbons  
Clip Boards  
Erasers  
Ink  
Desk Blotters  
Carbon Paper  
Military and Navy Stationery  
Kodak Supplies  
Film Developing  
Christmas Cards  
Christmas Wrappings

The  
**Rose Agency**

206 Corcoran St.  
Op. Washington Duke Hotel



For formalisms which make a girl stand out, go to Efir's. They have all colors and all materials: Taffeta, Velvetene, Nets, Lace, Satins, and others. These dresses have either full or flared skirts and may be obtained with a variety of neck lines.

If it's an Evening Dress you want, go to

**EFIRD'S DEPARTMENT STORE**

