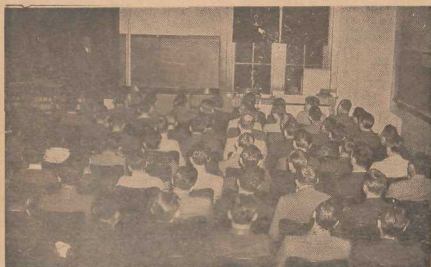


Play For Army



The entire cast of "The Male Animal" pictured above, journeyed to Fort Bragg, N. C., last night to give a repeat performance of their production for the men in uniform. This is the first time in Duke history that any move of this sort has been allowed. Transportation for the set and props was provided by the Fort's quartermaster corps. If this experiment is a success, other campus shows may be taken to nearby Army centers.

Engineers For Defense

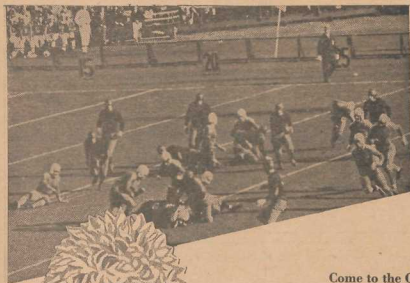


A. S. Brower gives pre-course instruction to a group of 150 students enrolled in Duke's contribution to the national defense effort. This shot was snapped of the engineering section of the program on the first night of classes. Brower is coordinator for the program here. None of the participants are regular students at Duke.

Three Of A Kind



Thirty hours old and sleepy already. The 18 pounds of squirming humanity above are Duke Hospital's first set of triplets in some 4500 births. They are Larry James, Lawrence Hill, and Leon Franklin Garner. Sons of Mr. and Mrs. Jesse James Garner of Mebane, they seem little excited in their record breaking arrival. There are five other children in the Garner family.



Come to the College Shop for the best in daytime wear . . . choose from hand-picked, Mademoiselle-approved Blouses, Skirts, Sweaters . . . one and two-piece Casual Frocks and Sport Coats. Always the right styles and colors at the right time.



Tempting Target



Washington Duke sits calmly through it all. Every year with the coming of the Carolina game comes a paint pissing for the defenseless statue of the tobacco magnate—and this year was no exception. Monday night an over-ardent Carolina man scored a hit with a bucket of paint. He was caught by campus police and turned over to the local jail. He was released after an uncomfortable night behind the bars, when university officials refused to press charges. Engineers, taken unaware by the early week attack, have been guarding the figure since Monday. It is uncertain whether they will be allowed the use of the traditional fire hose protection used in previous years.

Piano Here--See?



Miss Mary Eldam, cellist; Mrs. Robert Fearing, pianist; and Mrs. Edward Hall Broadhead, organist, discuss pre-concert plans backstage of the Woman's college auditorium. The three musicians appeared on the same program last night in Page. This was the first appearance on the campus of Miss Eldam. She has appeared as guest soloist of the Nassau Norfolk Little symphony orchestra, and is a new addition to the Duke music faculty.

Friends Now, But--



Two Tar Heels and two Blue Devils match wits on the weekly radio show, "Your Duke Parade." This battle was a mild one compared to the one that is expected in Duke stadium Saturday afternoon, when the same men match wits on the annual Carolina-Duke gridiron show.

Duke Pan-Americanism



Sigma Delta Pi initiates gather shortly after the Spanish fraternity's initiation of new pledges. The smiles are for South American countries—not the camera. Three countries are represented.

Fair Finalists



The statue of Ben Duke, above, received a peace offering the other night, when a repenting Carolina man left at his feet the five sideline markers stolen from the stadium Monday night.



Betty Lee Boren (left), Dayton, Ohio, and Marjorie Wyman, St. Clairsville, Ohio, were the finalists in the coed golf tournament just completed. Betty Lee was the winner in a 4 to 3 match at the Hillendale course. There was a record gallery on hand to watch her defeat Marjorie.

FROM the STADIUM to the BALLROOM By Way of ELLIS STONE'S

Great teams at Duke and North Carolina make headline news when they meet . . . cheered and inspired by lovely and thrilled co-eds who in turn keep themselves lovely and inspiring by regular visits to Ellis Stone's for their most attractive clothes, alluring perfumes, and their personal needs . . . Yes, Ellis Stone's is headquarters for the best of every feminine need for beauty, charm and correct attire.

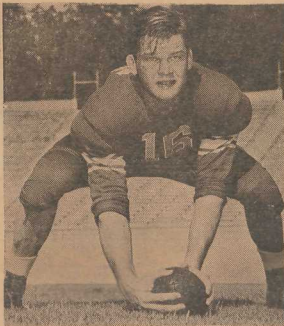
Come to our Theatre of Fashion for the Newest Formals . . . youthful, luxurious fashions for every personality . . . Fluffy and sweet, sophisticated and stately, tailored and crisp . . . but all as smart as a page from Mademoiselle.

Ellis Stone & Co

Durham's Best Store Since 1886



LET'S GO BLUE DEVILS!



BOB BARNETT - DUKE CENTER



STEVE LACH - DUKE HALFBACK



BOB McDONOUGH - DUKE TACKLE

PRITCHARD - BRIGHT & COMPANY
Washington Duke Hotel Building

DUKE UNIVERSITY LAUNDRY
"Specialists in the Care of College Men's Clothes"
Basement of Union

DUKE UNIVERSITY BARBER SHOP
"Is Your Guarantee of the Best Service"

CAROLINA GLASS COMPANY
Headquarters for Safety Glass
425 W. Main Street — at Five Points

DURHAM ENGRAVING COMPANY
220 East Parrish Street

SINCLAIR AT FIVE POINTS

TASTY BAKE SHOP
Call Us For Party Specials — We Deliver
Phone L-6981

BOONE DRUG COMPANY
"Where Quality Counts"
Corner Mangum, Parrish and Orange Streets

DURHAM ICE CREAM COMPANY
802 West Main Street

JONES AND FRASIER COMPANY
Durham's Outstanding Jewelers
121 West Main Street — Depositors' National Bank Bldg.

LIPSCOMB - GATTIS COMPANY
213 West Main Street

SEARS ROEBUCK AND COMPANY
"Let Sears Savings Make You Merry This Christmas"

EFIRD'S DEPARTMENT STORE
307 West Main Street

BALDWIN'S
107-109 Main Street

WALGREEN'S
You Are Always Welcome at Walgreen's

ELLIS STONE & COMPANY

WASHINGTON DUKE HOTEL

BELK - LEGGETT COMPANY
Durham's Shopping Center
315 West Main Street

CHRISTIAN PRINTING COMPANY
Downtown Headquarters for the Chronicle
121 West Parrish Street

Durham's Leading Merchants
are for YOU as well as for the team. Patronize **CHRONICLE**
Advertisers!

All freshmen candidates for swimming managerial positions are requested to report to varsity manager Mike McMahon at the swimming pool at 10:30 a.m. on Monday. He will outline duties for the fresh at that time.

SPORTSCASTING . . .

By MARTIN PARKER
Out On A Limb

BROOKLYN LUGGERS. The battle of the boroughs. Luggeria took Brooklyn. So should the City eleven. **COLUMBIA-MICHIGAN.** The Wolverines had a rest last Saturday while Penn was giving Columbia a workout. Some might say that the Wolverines should be in Columbia's week-end to rest . . . and they might while the Ann Arbor eleven spends its time running up and down the field. It's the Wolverines' day to bawl.

CORNELL-DARTMOUTH. If some one can keep accurate track of the downs this year, they will probably be a lot of useful tidbits for above Cough's waters.

DUKE-CAROLINA. The Tar Heels say they are going to offer a plenty of trouble tomorrow. From the looks of things, though, the Ram has turned into a lamb running around in a Wolf's clothing.

HARVARD-BROWN. Crimson is a lovely color. So is brown. Color blind spectators should have a hard time at his game tomorrow. For their information, the team they are scoring all the touchdowns will be Harvard.

NORTH TEXAS STATE TEACHERS COLLEGE-EAST TEXAS STATE TEACHERS COLLEGE. Considering all the gro and coos, the ins and outs, and which way the wind is blowing, the best bet should be . . . should be . . . No! You pick this one yourself.

NYU-TULANE. The Violet has been prominent in cross-country news recently, as Leslie MacMillen, the undefeated runner, keeps beating everyone in the New York vicinity. There should be more cross-country news coming out of the NYU activity Saturday . . . but Tulane will be doing most of the running . . . and for touchdowns.

PITTSBURGH-NEBRASKA. Panthers are not vegetarians. But here is one who should not be on corn tomorrow.

WAKE FOREST-CLEMSON. Here's one Tiger who should wear his way around the Forest.

YALE-PRINCETON. Yale has lost five straight. So has Princeton. There is some consolation in the fact that this can't keep up. We'd like to straddle the fence, but instinct dictates a nomination for Old Eli.

PHRESHOP PRATTLE. There is no truth in the rumor that Duke will play basketball against Temple in Madison Square Garden this winter. Reliable information states that the two teams will meet in Convention Hall, Philadelphia, however. The basketball season there is also under the management of the New York producer, Ned Irish . . . Bill Bond, noted Associated Press sports writer, has come down to watch the Duke-Carolina game tomorrow . . . Wonder what the great surprise is that Carolina threatens to spring five minutes before game-time tomorrow? . . . Duke's own "Nurmi" won another close race a few days ago. Next on his list of opponents are Werner Brown and Morfar Slater, two members of last year's crew relay team. Nurmi still boasts an undefeated record, but he says it came close to being blown by the Duke-Carolina game. Tomorrow's game will be broadcast over a network of ten major stations along the Atlantic seaboard . . . It looks as though the intramural department slipped up when they chose John Murphy, Sigma Chi, for second team all-intramural tackle. He played end all season.

LIPSCOMB-GATTIS CO.

FEATURING ARROW SHIRTS

213 West Main Street

News for Night Owls

If formal wear is your number one of the good-looking Arrow dress shirts. They're both comfortable and well-behaved.

The Arrow Lido, for white tie and tux, has a smooth narrow bosom, held securely in place by suspender loops.

The Arrow Shoreham, for black tie and tux, has a semi-cut pleated bosom with turned-down attached collar.

Arrow Dress Ties, \$1

Collars, 35c

Handkerchiefs, 25c

ARROW SHIRTS

For the Complete ARROW Line FOLLOW THE

TO

MILLER-BISHOP COMPANY
"Where Duke Men Meet"

Rauch Tops Prothro In Handball

Gains Finals by Upset; Boehm Still Favored

One of the most surprising upsets of the current intramural handball tournament was scored this week when Marshall Prothro, 21-3, 21-18, and Jim Mousmoules, 21-12, 21-16, to gain the final round.

Prothro, SAE, has been a standout player in handball competition for several years and has won numerous trophies. But Rauch, ZBT, displayed one of the most aggressive games seen on the Duke courts in some time, and he experienced little trouble in disposing of his larger adversary.

Ken Boehm, Sigma Chi, who is the defending champion and the favorite in the tournament, was not moved out of the center of the Clarke-Schwartz class. The latter content is a semi-final round match, and both men are Brown M freshmen.

In handball doubles, Boehm paired with McGraw to defeat Rauch and Bernikow in the semi-final. In the final round match, Clark and Mousmoules, Independents, downed Prothro and Cann in a three game tussle; the scores being 21-12, 19-21, 21-14.

Bokinsin Sparks Wademen On Gridiron and in Classroom

By John W. Hagins
Probably the most conscientious boy on the Blue Devils' squad this year is George Bokinsin—golden dabbler player and an excellent student. Even though he has been handicapped by injuries in other years, he has played seasons while alternating with Tommy Prothro in the blocking and quarterback assignments. A Dozen Years of Football

According to George, he has been playing this game of football for some twelve years, but it wasn't until the fall of 1934 when he entered Windsor high school that he played on a regular football team.

George was just a big awkward kid then, but with a little systematic training, he soon had his awkwardness and Windsor high school went for four straight years with but one defeat.

In the fall of 1938, George Bokinsin—golden dabbler player and an excellent student, even though he has been handicapped by injuries in other years, he has played seasons while alternating with Tommy Prothro in the blocking and quarterback assignments. A Dozen Years of Football

According to George, he has been playing this game of football for some twelve years, but it wasn't until the fall of 1934 when he entered Windsor high school that he played on a regular football team.

George was just a big awkward kid then, but with a little systematic training, he soon had his awkwardness and Windsor high school went for four straight years with but one defeat.

In the fall of 1938, George Bokinsin—golden dabbler player and an excellent student, even though he has been handicapped by injuries in other years, he has played seasons while alternating with Tommy Prothro in the blocking and quarterback assignments. A Dozen Years of Football

According to George, he has been playing this game of football for some twelve years, but it wasn't until the fall of 1934 when he entered Windsor high school that he played on a regular football team.

George was just a big awkward kid then, but with a little systematic training, he soon had his awkwardness and Windsor high school went for four straight years with but one defeat.

In the fall of 1938, George Bokinsin—golden dabbler player and an excellent student, even though he has been handicapped by injuries in other years, he has played seasons while alternating with Tommy Prothro in the blocking and quarterback assignments. A Dozen Years of Football

According to George, he has been playing this game of football for some twelve years, but it wasn't until the fall of 1934 when he entered Windsor high school that he played on a regular football team.

George was just a big awkward kid then, but with a little systematic training, he soon had his awkwardness and Windsor high school went for four straight years with but one defeat.

In the fall of 1938, George Bokinsin—golden dabbler player and an excellent student, even though he has been handicapped by injuries in other years, he has played seasons while alternating with Tommy Prothro in the blocking and quarterback assignments. A Dozen Years of Football

According to George, he has been playing this game of football for some twelve years, but it wasn't until the fall of 1934 when he entered Windsor high school that he played on a regular football team.

George was just a big awkward kid then, but with a little systematic training, he soon had his awkwardness and Windsor high school went for four straight years with but one defeat.

In the fall of 1938, George Bokinsin—golden dabbler player and an excellent student, even though he has been handicapped by injuries in other years, he has played seasons while alternating with Tommy Prothro in the blocking and quarterback assignments. A Dozen Years of Football

SPORTS

Friday, November 14, 1941

Sigma Chi Juggernaut

Picture here is the intramural football championship eleven which has gone undefeated in four seasons. Line (L to R): Bob Gross, Bill DeLong (sub end), Dan Maddox, Larry Coyte, Nelson Isbell, and Art McGraw, Backfield: Don Hoelnd, Bill Stark, Hap Spahler, and Bill McMahon. Not in the picture is Jack Schriever, who alternated with Isbell at tackle.

Carolina Sports Editor Manifests Confidence

By Harry Hollingsworth
Daily Tar Heel Sports Editor
CHAPEL HILL, Nov. 13.—Unlike the man who has a dangerous dog in his backyard and is scared to venture out because of his devilish tendencies, the University of North Carolina football team goes to Durham for its game with the Blue Devils Saturday knowing full well to expect a strong team, but also knowing that Duke won't go on a touchdown parade as it has in most of the games this season.

All of which adds up to the fact that Duke students may be surprised when they see the Tar Heels trot out on the field Saturday. Information reaching Chapel Hill all week has been that the Methodist school students have been wondering if Coach Wade will run up the score on the Tar Heels or if he will feel sorry for them and let the Duke team win by two or three touchdowns.

Such stuff as that sounds peculiar to their ears, for Duke, they feel, is going to get a much tougher game than what they have bargained.

It's true, of course, that the Tar Heels feel a little wary over Duke's power, clearly shown in the Maryland, Davidson, and Wake Forest games; but it's also true that past records mean very little when Duke-Carolina games are around.

Witness what happened in 1933 when Carolina was practically sitting in the Rose Bowl. Duke knocked them off, 25-0. And then last year Joe Austin and Jim Lanninge took the 6-3 story.

This isn't to say that the Tar Heels are expecting to add their fourth victory of the season Saturday, but neither do the Tar Heels go to Durham expecting to be a pushover for Duke.

Someone will probably be surprised Saturday.

Someone will probably be surprised Saturday.

Someone will probably be surprised Saturday.

Someone will probably be surprised Saturday.

Someone will probably be surprised Saturday.

Someone will probably be surprised Saturday.

Someone will probably be surprised Saturday.

Someone will probably be surprised Saturday.

Someone will probably be surprised Saturday.

Someone will probably be surprised Saturday.

Someone will probably be surprised Saturday.

Someone will probably be surprised Saturday.

Someone will probably be surprised Saturday.

Someone will probably be surprised Saturday.

Someone will probably be surprised Saturday.

Someone will probably be surprised Saturday.

Someone will probably be surprised Saturday.

Tennis Tourney Reaches Finals

The intramural tennis tournament neared its final stage this week, as Mort Heil, defending champion, defeated Dick Page, Pi Kappa Alpha. The Zeta Beta Tau star, who was high-point champion last year, moved into the finals by virtue of this win.

Bill Friel, House L, who is said by many to be the best fresh from tennis prospects to come to Duke in recent years, is favored to defeat the winner of the Bodie-Tomblin match and face Heil.

In the doubles tourney, Heller and Hub Khter, winners last fall, downed Bud McElvay and Bob Mudgett to gain the finals.

(Continued on page 6)

Harriers to Run In League Meet

The varsity and freshman cross country teams met their season's schedule of dual meets on Tuesday by defeating the Wake Forest varsity harriers, 21-34, and the freshman, 18-24.

On Monday the Blue Devil hill-and-dalers will close their season by competing in the annual Southern Conference championship run at College Park, Maryland.

In the meet with the Demon Deacons Hark Profenius, a junior, and Winty Lockwood, a sophomore, were the top performers.

(Continued on page 6)

Duke-Carolina Grid Rivalry Dates Back to the Eighties

By Bill Schuchardt
Tomorrow's Duke - Carolina gridiron meeting will mark the twenty-seventh renewal of a series that dates back to the eccentric eighties, and the days of Stonewall J. Durham.

During the years, Carolina has scored thirteen victories; Duke, eleven.

The first football game played in the Old North State was between the students of Trinity college and the University of North Carolina. As far as is known, it was the first real game in the south, although other teams had previously met in rugby contests before that Thanksgiving afternoon in 1852.

The Durham lads downed the Tar Heels, 16-0, that day before "a huge crowd of 100,000 spectators to six hundred people" in the Raleigh baseball park.

(Continued on page 6)

IM Basketball Teams Open Season Monday

With 47 teams entered, a new all-time high was reached as the intramural department prepared this week to launch the annual basketball tournament. This record number surpassed last year's total of 35 teams.

Another record was set when seven independent organizations entered. Divisions have been carefully arranged by the department in an attempt to pair teams of probable equal caliber.

The season this year will be unusual, running from the opening date, Monday, November 17, through next February.

Each team will meet its league opponents twice. Schedules running up to Christmas vacation will be released tomorrow.

The indoor stadium will be available for play all next week, and the IM department has taken advantage of this to schedule afternoon games only for the first five days. Beginning November 24, however, there will be two games scheduled for each of the following hours: 3, 4, 7, and 8 p.m. There will be no games scheduled for Saturdays.

DIVISION I
Alpha (A) Alpha
Beta (B) Beta
Gamma (C) Gamma
Delta (D) Delta
Epsilon (E) Epsilon
Zeta (Z) Zeta
Eta (H) Eta
Theta (T) Theta
Iota (I) Iota
Kappa (K) Kappa
Lambda (L) Lambda
Mu (M) Mu
Nu (N) Nu
Xi (X) Xi
Omicron (O) Omicron
Pi (P) Pi
Rho (R) Rho
Sigma (S) Sigma
Tau (T) Tau
Upsilon (U) Upsilon
Phi (F) Phi
Chi (C) Chi
Psi (P) Psi
Omega (O) Omega

DIVISION II
Alpha (A) Alpha
Beta (B) Beta
Gamma (C) Gamma
Delta (D) Delta
Epsilon (E) Epsilon
Zeta (Z) Zeta
Eta (H) Eta
Theta (T) Theta
Iota (I) Iota
Kappa (K) Kappa
Lambda (L) Lambda
Mu (M) Mu
Nu (N) Nu
Xi (X) Xi
Omicron (O) Omicron
Pi (P) Pi
Rho (R) Rho
Sigma (S) Sigma
Tau (T) Tau
Upsilon (U) Upsilon
Phi (F) Phi
Chi (C) Chi
Psi (P) Psi
Omega (O) Omega

DIVISION III
Alpha (A) Alpha
Beta (B) Beta
Gamma (C) Gamma
Delta (D) Delta
Epsilon (E) Epsilon
Zeta (Z) Zeta
Eta (H) Eta
Theta (T) Theta
Iota (I) Iota
Kappa (K) Kappa
Lambda (L) Lambda
Mu (M) Mu
Nu (N) Nu
Xi (X) Xi
Omicron (O) Omicron
Pi (P) Pi
Rho (R) Rho
Sigma (S) Sigma
Tau (T) Tau
Upsilon (U) Upsilon
Phi (F) Phi
Chi (C) Chi
Psi (P) Psi
Omega (O) Omega

DIVISION IV
Alpha (A) Alpha
Beta (B) Beta
Gamma (C) Gamma
Delta (D) Delta
Epsilon (E) Epsilon
Zeta (Z) Zeta
Eta (H) Eta
Theta (T) Theta
Iota (I) Iota
Kappa (K) Kappa
Lambda (L) Lambda
Mu (M) Mu
Nu (N) Nu
Xi (X) Xi
Omicron (O) Omicron
Pi (P) Pi
Rho (R) Rho
Sigma (S) Sigma
Tau (T) Tau
Upsilon (U) Upsilon
Phi (F) Phi
Chi (C) Chi
Psi (P) Psi
Omega (O) Omega

DIVISION V
Alpha (A) Alpha
Beta (B) Beta
Gamma (C) Gamma
Delta (D) Delta
Epsilon (E) Epsilon
Zeta (Z) Zeta
Eta (H) Eta
Theta (T) Theta
Iota (I) Iota
Kappa (K) Kappa
Lambda (L) Lambda
Mu (M) Mu
Nu (N) Nu
Xi (X) Xi
Omicron (O) Omicron
Pi (P) Pi
Rho (R) Rho
Sigma (S) Sigma
Tau (T) Tau
Upsilon (U) Upsilon
Phi (F) Phi
Chi (C) Chi
Psi (P) Psi
Omega (O) Omega

DIVISION VI
Alpha (A) Alpha
Beta (B) Beta
Gamma (C) Gamma
Delta (D) Delta
Epsilon (E) Epsilon
Zeta (Z) Zeta
Eta (H) Eta
Theta (T) Theta
Iota (I) Iota
Kappa (K) Kappa
Lambda (L) Lambda
Mu (M) Mu
Nu (N) Nu
Xi (X) Xi
Omicron (O) Omicron
Pi (P) Pi
Rho (R) Rho
Sigma (S) Sigma
Tau (T) Tau
Upsilon (U) Upsilon
Phi (F) Phi
Chi (C) Chi
Psi (P) Psi
Omega (O) Omega

DIVISION VII
Alpha (A) Alpha
Beta (B) Beta
Gamma (C) Gamma
Delta (D) Delta
Epsilon (E) Epsilon
Zeta (Z) Zeta
Eta (H) Eta
Theta (T) Theta
Iota (I) Iota
Kappa (K) Kappa
Lambda (L) Lambda
Mu (M) Mu
Nu (N) Nu
Xi (X) Xi
Omicron (O) Omicron
Pi (P) Pi
Rho (R) Rho
Sigma (S) Sigma
Tau (T) Tau
Upsilon (U) Upsilon
Phi (F) Phi
Chi (C) Chi
Psi (P) Psi
Omega (O) Omega

DIVISION VIII
Alpha (A) Alpha
Beta (B) Beta
Gamma (C) Gamma
Delta (D) Delta
Epsilon (E) Epsilon
Zeta (Z) Zeta
Eta (H) Eta
Theta (T) Theta
Iota (I) Iota
Kappa (K) Kappa
Lambda (L) Lambda
Mu (M) Mu
Nu (N) Nu
Xi (X) Xi
Omicron (O) Omicron
Pi (P) Pi
Rho (R) Rho
Sigma (S) Sigma
Tau (T) Tau
Upsilon (U) Upsilon
Phi (F) Phi
Chi (C) Chi
Psi (P) Psi
Omega (O) Omega

DIVISION IX
Alpha (A) Alpha
Beta (B) Beta
Gamma (C) Gamma
Delta (D) Delta
Epsilon (E) Epsilon
Zeta (Z) Zeta
Eta (H) Eta
Theta (T) Theta
Iota (I) Iota
Kappa (K) Kappa
Lambda (L) Lambda
Mu (M) Mu
Nu (N) Nu
Xi (X) Xi
Omicron (O) Omicron
Pi (P) Pi
Rho (R) Rho
Sigma (S) Sigma
Tau (T) Tau
Upsilon (U) Upsilon
Phi (F) Phi
Chi (C) Chi
Psi (P) Psi
Omega (O) Omega

DIVISION X
Alpha (A) Alpha
Beta (B) Beta
Gamma (C) Gamma
Delta (D) Delta
Epsilon (E) Epsilon
Zeta (Z) Zeta
Eta (H) Eta
Theta (T) Theta
Iota (I) Iota
Kappa (K) Kappa
Lambda (L) Lambda
Mu (M) Mu
Nu (N) Nu
Xi (X) Xi
Omicron (O) Omicron
Pi (P) Pi
Rho (R) Rho
Sigma (S) Sigma
Tau (T) Tau
Upsilon (U) Upsilon
Phi (F) Phi
Chi (C) Chi
Psi (P) Psi
Omega (O) Omega

DIVISION XI
Alpha (A) Alpha
Beta (B) Beta
Gamma (C) Gamma
Delta (D) Delta
Epsilon (E) Epsilon
Zeta (Z) Zeta
Eta (H) Eta
Theta (T) Theta
Iota (I) Iota
Kappa (K) Kappa
Lambda (L) Lambda
Mu (M) Mu
Nu (N) Nu
Xi (X) Xi
Omicron (O) Omicron
Pi (P) Pi
Rho (R) Rho
Sigma (S) Sigma
Tau (T) Tau
Upsilon (U) Upsilon
Phi (F) Phi
Chi (C) Chi
Psi (P) Psi
Omega (O) Omega

DIVISION XII
Alpha (A) Alpha
Beta (B) Beta
Gamma (C) Gamma
Delta (D) Delta
Epsilon (E) Epsilon
Zeta (Z) Zeta
Eta (H) Eta
Theta (T) Theta
Iota (I) Iota
Kappa (K) Kappa
Lambda (L) Lambda
Mu (M) Mu
Nu (N) Nu
Xi (X) Xi
Omicron (O) Omicron
Pi (P) Pi
Rho (R) Rho
Sigma (S) Sigma
Tau (T) Tau
Upsilon (U) Upsilon
Phi (F) Phi
Chi (C) Chi
Psi (P) Psi
Omega (O) Omega

DIVISION XIII
Alpha (A) Alpha
Beta (B) Beta
Gamma (C) Gamma
Delta (D) Delta
Epsilon (E) Epsilon
Zeta (Z) Zeta
Eta (H) Eta
Theta (T) Theta
Iota (I) Iota
Kappa (K) Kappa
Lambda (L) Lambda
Mu (M) Mu
Nu (N) Nu
Xi (X) Xi
Omicron (O) Omicron
Pi (P) Pi
Rho (R) Rho
Sigma (S) Sigma
Tau (T) Tau
Upsilon (U) Upsilon
Phi (F) Phi
Chi (C) Chi
Psi (P) Psi
Omega (O) Omega

DIVISION XIV
Alpha (A) Alpha
Beta (B) Beta
Gamma (C) Gamma
Delta (D) Delta
Epsilon (E) Epsilon
Zeta (Z) Zeta
Eta (H) Eta
Theta (T) Theta
Iota (I) Iota
Kappa (K) Kappa
Lambda (L) Lambda
Mu (M) Mu
Nu (N) Nu
Xi (X) Xi
Omicron (O) Omicron
Pi (P) Pi
Rho (R) Rho
Sigma (S) Sigma
Tau (T) Tau
Upsilon (U) Upsilon
Phi (F) Phi
Chi (C) Chi
Psi (P) Psi
Omega (O) Omega

DIVISION XV
Alpha (A) Alpha
Beta (B) Beta
Gamma (C) Gamma
Delta (D) Delta
Epsilon (E) Epsilon
Zeta (Z) Zeta
Eta (H) Eta
Theta (T) Theta
Iota (I) Iota
Kappa (K) Kappa
Lambda (L) Lambda
Mu (M) Mu
Nu (N) Nu
Xi (X) Xi
Omicron (O) Omicron
Pi (P) Pi
Rho (R) Rho
Sigma (S) Sigma
Tau (T) Tau
Upsilon (U) Upsilon
Phi (F) Phi
Chi (C) Chi
Psi (P) Psi
Omega (O) Omega

DIVISION XVI
Alpha (A) Alpha
Beta (B) Beta
Gamma (C) Gamma
Delta (D) Delta
Epsilon (E) Epsilon
Zeta (Z) Zeta
Eta (H) Eta
Theta (T) Theta
Iota (I) Iota
Kappa (K) Kappa
Lambda (L) Lambda
Mu (M) Mu
Nu (N) Nu
Xi (X) Xi
Omicron (O) Omicron
Pi (P) Pi
Rho (R) Rho
Sigma (S) Sigma
Tau (T) Tau
Upsilon (U) Upsilon
Phi (F) Phi
Chi (C) Chi
Psi (P) Psi
Omega (O) Omega

DIVISION XVII
Alpha (A) Alpha
Beta (B) Beta
Gamma (C) Gamma
Delta (D) Delta
Epsilon (E) Epsilon
Zeta (Z) Zeta
Eta (H) Eta
Theta (T) Theta
Iota (I) Iota
Kappa (K) Kappa
Lambda (L) Lambda
Mu (M) Mu
Nu (N) Nu
Xi (X) Xi
Omicron (O) Omicron
Pi (P) Pi
Rho (R) Rho
Sigma (S) Sigma
Tau (T) Tau
Upsilon (U) Upsilon
Phi (F) Phi
Chi (C) Chi
Psi (P) Psi
Omega (O) Omega

DIVISION XVIII
Alpha (A) Alpha
Beta (B) Beta
Gamma (C) Gamma
Delta (D) Delta
Epsilon (E) Epsilon
Zeta (Z) Zeta
Eta (H) Eta
Theta (T) Theta
Iota (I) Iota
Kappa (K) Kappa
Lambda (L) Lambda
Mu (M) Mu
Nu (N) Nu
Xi (X) Xi
Omicron (O) Omicron
Pi (P) Pi
Rho (R) Rho
Sigma (S) Sigma
Tau (T) Tau
Upsilon (U) Upsilon
Phi (F) Phi
Chi (C) Chi
Psi (P) Psi
Omega (O) Omega

DIVISION XIX
Alpha (A) Alpha
Beta (B) Beta
Gamma (C) Gamma
Delta (D) Delta
Epsilon (E) Epsilon
Zeta (Z) Zeta
Eta (H) Eta
Theta (T) Theta
Iota (I) Iota
Kappa (K) Kappa
Lambda (L) Lambda
Mu (M) Mu
Nu (N) Nu
Xi (X) Xi
Omicron (O) Omicron
Pi (P) Pi
Rho (R) Rho
Sigma (S) Sigma
Tau (T) Tau
Upsilon (U) Upsilon
Phi (F) Phi
Chi (C) Chi
Psi (P) Psi
Omega (O) Omega

DIVISION XX
Alpha (A) Alpha
Beta (B) Beta
Gamma (C) Gamma
Delta (D) Delta
Epsilon (E) Epsilon
Zeta (Z) Zeta
Eta (H) Eta
Theta (T) Theta
Iota (I) Iota
Kappa (K) Kappa
Lambda (L) Lambda
Mu (M) Mu
Nu (N) Nu
Xi (X) Xi
Omicron (O) Omicron
Pi (P) Pi
Rho (R) Rho
Sigma (S) Sigma
Tau (T) Tau
Upsilon (U) Upsilon
Phi (F) Phi
Chi (C) Chi
Psi (P) Psi
Omega (O) Omega

DIVISION XXI
Alpha (A) Alpha
Beta (B) Beta
Gamma (C) Gamma
Delta (D) Delta
Epsilon (E) Epsilon
Zeta (Z) Zeta
Eta (H) Eta
Theta (T) Theta
Iota (I) Iota
Kappa (K) Kappa
Lambda (L) Lambda
Mu (M) Mu
Nu (N) Nu
Xi (X) Xi
Omicron (O) Omicron
Pi (P) Pi
Rho (R) Rho
Sigma (S) Sigma
Tau (T) Tau
Upsilon (U) Upsilon
Phi (F) Phi
Chi (C) Chi
Psi (P) Psi
Omega (O) Omega

DIVISION XXII
Alpha (A) Alpha
Beta (B) Beta
Gamma (C) Gamma
Delta (D) Delta
Epsilon (E) Epsilon
Zeta (Z) Zeta
Eta (H) Eta
Theta (T) Theta
Iota (I) Iota
Kappa (K) Kappa
Lambda (L) Lambda
Mu (M) Mu
Nu (N) Nu
Xi (X) Xi
Omicron (O) Omicron
Pi (P) Pi
Rho (R) Rho
Sigma (S) Sigma
Tau (T) Tau
Upsilon (U) Upsilon
Phi (F) Phi
Chi (C) Chi
Psi (P) Psi
Omega (O) Omega

DIVISION XXIII
Alpha (A) Alpha
Beta (B) Beta
Gamma (C) Gamma
Delta (D) Delta
Epsilon (E) Epsilon
Zeta (Z) Zeta
Eta (H) Eta
Theta (T) Theta
Iota (I) Iota
Kappa (K) Kappa
Lambda (L) Lambda
Mu (M) Mu
Nu (N) Nu
Xi (X) Xi
Omicron (O) Omicron
Pi (P) Pi
Rho (R) Rho
Sigma (S) Sigma
Tau (T) Tau
Upsilon (U) Upsilon
Phi (F) Phi
Chi (C) Chi
Psi (P) Psi
Omega (O) Omega

DIVISION XXIV
Alpha (A) Alpha
Beta (B) Beta
Gamma (C) Gamma
Delta (D) Delta
Epsilon (E) Epsilon
Zeta (Z) Zeta
Eta (H) Eta
Theta (T) Theta
Iota (I) Iota
Kappa (K) Kappa
Lambda (L) Lambda
Mu (M) Mu
Nu (N) Nu
Xi (X) Xi
Omicron (O) Omicron
Pi (P) Pi
Rho (R) Rho
Sigma (S) Sigma
Tau (T) Tau
Upsilon (U) Upsilon
Phi (F) Phi
Chi (C) Chi
Psi (P) Psi
Omega (O) Omega

DIVISION XXV
Alpha (A) Alpha
Beta (B) Beta
Gamma (C) Gamma
Delta (D) Delta
Epsilon (E) Epsilon
Zeta (Z) Zeta
Eta (H) Eta
Theta (T) Theta
Iota (I

WHEN YOU THINK OF

RECORDS

THINK OF

O'BRIANT'S

PAUL GERMAN
Campus Representative

WHERE'S OUIJA?

We Pay Highest Prices for
YOUR OLD SHOES AND CLOTHING
KAPLAN'S SHOE SHOP
Morris Street Beside Durham Bowling Alleys

Gracious White

For the CO-ED BALL



We have the Smartest and
most complete showing of
White Formal Dresses

This is your dance . . . so go
smooth with your dress from

ROBBIN'S

FASHION CENTER

204 W. Main

F-8151

CRITERION

DURHAM'S POPULAR THEATRE

Saturday

"MYSTERY SHIP"

with Paul Kelly

Sunday, Monday, and Tuesday

Ginger Rogers in

"TOM, DICK AND HARRY"

AT YOUR FAVORITE THEATRE!

CENTER

Last Times Saturday
Senja Benie — John Payne
Glen Miller and his Band

"Sun Valley Serenade"

Sunday—Monday—Tuesday

FRED ASTAIRE
RITA HAYWORTH

"YOU'LL NEVER GET RICH"

Songs by Cole Porter

CAROLINA

Last Times Saturday
Wm. Gargan — Edmund Lowe

"FLYING CADET"

Sunday—Monday—Tuesday

"Trail of the Lonesome Pine"

with—
Fred Macmurray
Sylvia Sydney — Henry Fonda
in TECHNICOLOR

RIALTO

Last Times Saturday
DON "RED" BARRY in
"KANSAS CYCLONE"

Sunday—Monday

"UNDERGROUND"

Amazing but true! Nazi what's
going on inside Nazi Germany.

-Rivalry-

(Continued from page 5)
The next year two games were
played with Trinity coming out
on top both times, 1-0 and 23-17.
When the educators at old Trin-

Quadrangle Pictures

Saturday

"The Reluctant Dragon"

Student Run
For Student Fun

ity decided to give up football in
1934 and engage in a more schol-
arly pursuit, the series stood at
five wins for the Durham boys
and only two for the Tar Heels.
But in 1920 the sport was re-
established at Trinity and the
two neighboring rivals resumed
their feud two years later. The
North Carolina boys kicked the
Big Blue around for ten years
and did not yield a single victory,
although they were held to score-
less ties in '30 and '31. But
after Wade took over, things
changed, and since '32 Duke has
won six out of nine games.

The most memorable game, if
any single game can be pointed
out as being more thrilling than
any other, came in 1935 when
Coach Carl Stansley's boys were
Rose Bowl bound and just came
over to Durham to see the scene-
ry before leaving for the west
coast. But maybe they could not
decide how many touchdowns
they were going to make in Pa-
dena and were worried about
that, anyway, they were sent
home a badly beaten club by

-Football-

(Continued from page 1)
mentor, this report is the result
of a misunderstanding. Wade
said he had not indicated Duke
would or would not consider such
a bid, but that Duke would not
consider a post-season game un-
til the present campaign is over-
And that means that the up-
permost item among Duke grid
circles right now is tomorrow's
battle with Carolina.

-Tennis-

(Continued from page 5)
They were expected to receive
stern competition from Hal
Landenberg and Stephan, House
K freshmen stars, who reached
the finals by downing Dick Con-
nor and Dan Mosely, SAE, 6-0,
6-2.

the inspired Blue Devils who set
them down, 25-0.
But still we cannot leave out
of any record of the Duke tennis
linea series "Ace" Parker's great
105-yard run to net the Devils a
27-7 triumph in 1938 or the 14-0
win registered by the Wademen
in '38 when crippled George Mc-
Afee climbed on George Rad-
man's back to catch the pass that
set up the first score.

Announcing . . . the Reopening of STATE Theatre

Today — Saturday

"ARIZONA"

with Jean Arthur
Opposite Malbourne Hotel

Phone R-2814

DURHAM MOTOR COURT

Morally Clean for Your Protection

- New
- Clean
- Fireproof
- Quiet
- Modern
- Comfortable

Private Tub and Shower—Innerspring Mattresses
Air-Conditioned — Furnace Heat
Attached Garage
On U. S. 15-581 (Durham-Chapel Hill Road)
Three Miles from Durham City Limits

References: Durham Chamber of Commerce
Officials Duke University, Duncan Hines, and A.A.A.

DUKE vs. CAROLINA

Be sure your "date"
is wearing a Duke
Mum.



CO-ED BALL

Wednesday, Nov. 19

Don't wait until the
last minute . . . order
your corsage now . . .

Prompt Delivery . . .

Moderate Rates

Orchids • Gardenias
Split Carnations
Roses



215 Mangum St. R-194

Contact Our Representatives



Witty, wise . . . his mind alert,
Sitting there in his nice clean shirt,
Always the life-boy of party . . .
We do the work for Smarty Artie.

CLEANING AND PRESSING
ALTERATIONS SHOE REPAIRING

Our Service Is Dependable

Duke University Laundry

Grid Title Won By Sigma Chis

Without the services of star
quarterback, Hap Spulter, the
Sigma Chi Jugernaut rolled on
to its fourth consecutive intra-
mural football title last Thurs-
day after outclassed Chi Phi.
The score was only 19-0, and
the winners were only able to
score two touchdowns during
the battle, but that is hardly de-
scriptive of the manner in which
the champions dominated the
play throughout the game.

Bill McCahan ran and passed
his mates to their two touch-
downs, and then the Sigma pro-
ceeded to keep their opponents
bottled up deep in their own
territory. This led to the block-
ing of three Chi Phi punts and
a like number of safeties, thus
adding six points to the victor's
score.

Slump Continues As Booters Lose

Duke's soccer team failed to
pull itself out of the slump it en-
tered this week. The Blue Devil
booters fell before the Westches-
ter College college of Ponce de
leona, 3-1, in a hard fought con-
test played on the home field last
Monday and were held to a 2-2
tie by the Davidson Wildcats in a
game at Davidson on Tuesday.
In the Westchester contest, the
Rams opened the scoring late in
the first quarter, while the Blue
Devil inside, tied the score near
the end of the second pe-
riod, but the Duke attack bog-
ged down and the teachers tal-
led twice more before the sec-
ond half ended.

After two overtime periods
against Davidson, the charges of
Coach Gerry Gerard could only
gain a tie. Charles Richmond
scored both goals for the Dukes.

-Super SGA-

(Continued from page 1)
go on record as favoring the pro-
posed council," he said.

Providing that the ESGA does
approve the plan, representatives
from the three councils will meet
Tuesday night to formulate plans
for organization. The nine mem-
ber council will consist of the
president and a junior and senior
member from each of the three
councils. The engineering and
Trinity councils will select their
junior and senior representative
Sunday; the women will name
representatives at their Monday
night council meeting.
Alex McMahon, secretary and
treasurer of the Men's SGA, ex-
pressed his hope that the ESGA
would approve the plan. "The
need for the council is great.
Should the plan fail now with
materialization only a step away,
university student government
will have lost an ideal oppor-
tunity to achieve its needed in-
tegration."

Society Pledges Women Athletes

Three superb female athletes,
Eleanor Tupper, Doris Stroupe,
and Sheena Webster, were in-
ducted into the first stages of
pledgeship last Tuesday by Del-
ta Psi Rho Alpha, honorary
women's athletic society.

These women were chosen,
not only for their ability to play
a bang-up game of ping-pong,
but because they are examples
of typical Duke women athletes.
Initiation has been postponed
until spring, at which time all
of the pledges will be forced to
wear out-landish clothes for three
days and to obey the whims of
the members.

Duke has always attempted to
have outstanding athletes on
both campuses, and Delta Psi
Rho Alpha has been an asset in
recognizing athletes on the
Women's campus, deserving of
this honor.

-Players-

(Continued from page 1)
murderer in spite of the effi-
ciency of L. Wiegand (Larry
Higgins) and his aide, Inspector
O'Malley (Fred Walcott).

Remainder of the cast in-
cludes: A. C. Hillegas, Ric
Kludewski, Charles Williams,
Bill O'Connor, Elizabeth Dills,
Allen Page, Charles Phillips,
Emrich Elmer, John Kettman,
Art Edsall, H. Pollard, Zach
White, Waldo Henson, and Joe
Gustaf.

Largest Credit Investors

RAY'S, Inc.

The Store of Values

211 W. Main Durham, N. C.



Waffs, & Coffee, 35c

Chocolate Syrup, 25c

Vanilla Syrup, 25c

Strawberry Syrup, 25c

Apple Syrup, 25c

Orange Syrup, 25c

Peach Syrup, 25c

Cherry Syrup, 25c

Plum Syrup, 25c

Raspberry Syrup, 25c

Blackberry Syrup, 25c

Blueberry Syrup, 25c

Strawberry Syrup, 25c

Vanilla Syrup, 25c

Chocolate Syrup, 25c

Waffs, & Coffee, 35c

Strawberry Syrup, 25c

Vanilla Syrup, 25c

Chocolate Syrup, 25c

Waffs, & Coffee, 35c

Strawberry Syrup, 25c

Vanilla Syrup, 25c

Chocolate Syrup, 25c

Waffs, & Coffee, 35c

Strawberry Syrup, 25c

Vanilla Syrup, 25c

Chocolate Syrup, 25c

Waffs, & Coffee, 35c

Strawberry Syrup, 25c

Vanilla Syrup, 25c

Chocolate Syrup, 25c

Waffs, & Coffee, 35c

Strawberry Syrup, 25c

Vanilla Syrup, 25c

Chocolate Syrup, 25c

Waffs, & Coffee, 35c

Strawberry Syrup, 25c

Vanilla Syrup, 25c

Chocolate Syrup, 25c

Waffs, & Coffee, 35c

Strawberry Syrup, 25c

Vanilla Syrup, 25c

Chocolate Syrup, 25c

Waffs, & Coffee, 35c

Strawberry Syrup, 25c

Vanilla Syrup, 25c

Chocolate Syrup, 25c

Waffs, & Coffee, 35c

-Harriers-

(Continued from page 5)
Duke with Art Adams of Wake
Forest taking third place.
Bud Solsburg again was first
under the tape for the Blue
Imps in a time of 13:36 over the
shortened freshman course.

GOOSE CREEK

CRAPSHOTS

Washington Duke Hotel Lobby
"Come in and browse"

OUTLINES, ETC.

For Your Mid-Semesters
The Book Exchange

Releases of the week

Your Latest "Hit Tune"
Jimmy Lunceford's
"Hi, Spook"
"Yard Dog Maazra"
Tommy Dorsey's
"On the Alamo"
"Swing It On Nothing"
Artie Shaw's
"If I Love Again"
"Rockin' Chair"

FULLER
MUSIC STORE
106 N. Mangum St.

JAKE NURKIN'S Valetor Service
PRESSING — SHOE SHINE — HAT CLEANING
Open Sun. until 4:00 P.M. Sat. nights until 11:30 P.M.
Opposite Uptown Theatre



"H-m-m . . . m-m . . . m!
They don't come any
better !!!"
Western Steaks and
Chops Our Specialty!
24-Hour Service

IDEAL DINER

Opposite the Bus Station



HOT WATER HEATERS

\$5.95

ANTI-FREEZE \$1.00 gal.
BATTERIES \$5.30 up
600x16 ALL AMERICAN TIRES . . . \$6.94
Plus Tax

Miller-Hurst

INCORPORATED

"Across from City Hall"

Cornes Morgan and Morris Sts. N-113

"COMPLETE BRAKE SERVICE"

Send The Chronicle Home

How many words
were assigned
for that . . .

- book report
- term paper
- themes

. . . and . . .

Are you going to try and copy
it yourself?

BRING IT TO US!

Duke University Typing Bureau

Mrs. C. M. Ryerson, Mgr. Union 06 Phone 5295

With This Line Up . . . the BLUE DEVILS Can't Lose!

Davis
O
Lach
O
Prothro
O
Burns
O
Barnett
O
Goddard
O
Karmazin
O
Smith
O
Pieseekey
O
McDonough
O

You Can't Lose Either If You Trade at Bailey's

"THAT SAME OLD ONE STOP SERVICE"

BAILEY'S ESSO SERVICE

Opposite East Campus Gate