

Explosives Chemistry Class Gets Under Way



Chemistry of explosives course, taught in connection with the national defense effort by Dr. Marcus E. Hoole of the chemistry department, will begin classes October 20.

The course has been offered twice before here and is being repeated because of the demand for chemists and managers in this type of chemistry in the defense factories of the nation. Since the course requires six hours a day and a college degree for immediate placement, it will be open only to students who

have completed four years of college work.

There is no cost for the course except textbooks and incidental materials, since the university is being reimbursed by the government for training workers in the national defense movement.

The specific purges of the course is to provide chemistry training for persons planning to work as (1) inspectors for the ordnance department, (2) operators for the manufacturers having contracts in this field and (3) others employed in this field in which a technical training is required.

The course is divided into two parts, and will be completed December 20.

Applicants should file applications with Mr. A. S. Brower, director, engineering, science and management training.

N-123
Broadway Taxicab

Students....

After the game this Saturday, make your headquarters the place where all good Duke students go!

Steaks, Barbecued and Fried Chicken, and Steamed Oysters are our Specialty!

THE LITTLE ACORN
Rigsbee Ave. and Corporation Ave.
Phone N-362

For Those Week-end Formals



GLAMOROUS NEW
EVENING GOWNS

Cocds, take your choice of this important new collection of Evening Dresses.

We Solicit Charge Accounts.



the Fashion
LADIES' WEAR

Be Sure It's a Fashion Fashion

Welcome Duke ALUMNI and ALUMNAE

STUDENTS OF BOTH CAMPUSES
WE ARE WITH YOU THIS WEEK-END!

When any gift or jewelry problem confronts you, think of Jones and Frasier, Durham's Leading Jewelers since 1885

Gifts For Every Occasion

Jones & Frasier Company
121 W. Main Street Depositors Nat'l Bank Bldg.

Roper Memoirs To Be Published By Duke Press

Daniel C. Roper, former Secretary of Commerce, has completed the manuscript for a volume of memoirs to be published by the Duke University Press in December under the title, *Fifty Years of Public Life*.

Roper is a Duke graduate and has been university trustee since 1929. He began his public career as member of the South Carolina state house of representatives in 1892, was first assistant postmaster general from 1913 to 1916, and organized the Woodrow Wilson campaign in 1916.

He became collector of internal revenue in 1917 and Secretary of Commerce in Roosevelt's cabinet in 1929. His book sets forth for the first time the former cabinet member's viewpoints on many issues which have occurred during his long period of public life.

Seven other books are listed for publication by Duke Press during fall and early winter. They include:

The Waldenses in the New World by George B. Watts, professor of French on Davidson.

Francis of Assisi by Ray C. Petry, assistant professor of church history.

The Star-Crossed Renaissance by Don Cameron Allen, assistant professor of English.

Returns to the Fontaines by John Paul Pritchard, professor of Greek and head of the departmental languages in Washington and Jefferson college.

The Letters of Dryden, by Charles E. Ward, assistant professor of English.

Medical Genetics by Laurence H. Snyder, professor of medical genetics in Ohio State university College of Medicine.

Creative Factors in Scientific Research by Austin L. Porterfield, professor of sociology in Texas Christian university.

Bery of Bees Blitz Campus

A bevy of bumblebees pulled a blitz on East yesterday. The scene of the crime was the Dodge Shop; the body was a spilled dope.

Much to the chagrin of the fairer sex, the daily-trot path between classes to the Dodge Shop was literally blocked by buzzing bees. Several of the braver coeds tried unsuccessfully to maneuver through the danger zone, but a surprise attack on the flank was feared.

The latest communique from a high command shows the invaders to be still there, but dispersment of the foes appears certain.

FIVE POINTS LOAN COMPANY

Durham's Oldest and Most Reliable Pawnbrokers

"When you can't see dad... see us"

We make Largest Loans on Merchandise of value!

339 W. Main Street At Five Points

Duke Students!

We have a complete line of Sportswear: Sport Jackets, Sweaters and Slacks

WEAVER'S MEN'S SHOP

103 E. Main St. F-303

Select Your Own Diet! Modern Banquet Rooms!

SERVE Yourself and SAVE

HARVEY'S
Cafeteria

105 East Main St.

Two Great Backfields Meet Tomorrow



Law Faculty Members To Attend Conference

Four law school faculty members will attend the annual conference of the American Bar association in Indianapolis, Ind. next week.

Those attending the conference are Dean H. C. Horack, Professors Harold Shepherd and Paul Sanders, and Dr. Raphael Lemkin.

Dean Horack will also attend the meeting of the council on legal education and the meeting of the national conference of bar examiners before the Indianapolis conference.

Professor Shepherd will attend the meeting of the house of delegates, governing body of the bar association. He will also preside at a meeting of the executive committee of the association of American law schools, of which he is president, beginning October 1.

Professor Sanders left Friday night for New York to participate in a two-day conference on "Tort Liability of Municipalities," sponsored by the social science research council to formulate plans for establishment of more uniform rules concerning

chasing southern rabbits and romping in the rare southern snow, which was beginning to cover the ground.

When his master and his company beat their dejected retreat from the stadium, where they had watched their beloved Goldberg and company suffer defeat at the hands of the unbeaten, undisciplined, and uncorrected on Blue Devils, they failed to miss the dog which they had left in the car.

Believing that the best way to forget is space between the scene of the fray, the Pittsburghers left hastily for the north country. The dog was forgotten and has been ever since.

Since that time he, like any normal dog, has acquired himself a mate of the mixed-breed variety and they have set about raising a family. Only on rare occasions are he and his family seen in broad daylight, but on night they can be heard singing to the moon in the eerie fashion peculiar to their ancestors.

Professor Douglas Maggs recently assisted in formulation of a recommendation to establish a 40-cent-an-hour minimum wage rate in interstate truck transportation sessions of the Property Motor Carrier Industry committee of the U. S. Department of Labor wage and hour division.

Pittsburgh Chow Runs Rampant In Duke Forest

Duke has its own version of the "Call of the Wild."

Remember the Duke-Pitt game in '28 when the Blue Devils clinched their bid to the Rose Bowl with a victory in the snow? Pitt fans in great profusion came to Durham to witness that game, and in the group were the owners of a Chow, a beautiful specimen of dog.

During the game the owners left the dog in the safety of the car, because of a stadium rule prohibiting dogs near the playing field during game-time. The Chow, seeing the open window left for his ventilation, decided to explore the south on his own hook, a perfectly natural trait among dogs.

His explorations naturally took him out of the small area of the parking lot and into the surrounding woods. There he evidently became interested in

Scholastic Society Honors 25 Juniors

Defense Class Helps Women To Reduce, Too

By Joanne Stephens

If the results of the physical fitness classes now being given on East campus as part of the defense program work out, coeds will be able to climb ladders and throw sandbags around with the best of them. Such accomplishments are considered of major importance in war time when the college-age group of women are often called on to do actual physical labor.

Over a hundred women who reported to the gymnasium for the course found out during the first class period last Tuesday night that such activities involve many aches and pains, as the program calls for training to loosen up the kinks in muscles that most coeds didn't even know they had. Hence some rather noticeable limps around campus.

Miss Julia Grout, head of the physical education department, who is in charge of the course, warned the defense-minded women that the physical fitness branch of the activity was no place for anyone who felt they couldn't take strenuous exercises and the meat strenuous exercises.

Many members of the class felt that it is an excellent opportunity to kill two birds with one stone by not only adding the physical fitness to their physical fitness measurements. Those who decide to flit instead are expected to start knitting sweaters for British War Relief as their activity.

1919, oldest honorary scholastic society on the campus, invited twenty-five juniors into membership last Tuesday.

Initiation of new members will be by Sunday afternoon at 4 o'clock in the Union ballroom. Following initiation, old and new members will attend a picnic supper.

Those invited into membership are: Julian Boyce, Ray Bopp, Harvie Brascom, Richard A. Brown, Sid Gullledge, John Hale, Beckham, Blund Harowitz, Marcus Hickman, Gordon Lawrence Johnson, Dan Mousley, John Moylan, Ray Nasher, Albert B. Newport, Thomas Reid, Edwin Rutkin, Phil Russell, William B. Schwartz, J. Read Stovall, J. Ken Thomas, Harry W. Trevelyan, Howard Walker, William T. Watkins, Hardy George Webster, Elmer Murray White, Robert Douglas Young.

Miss Julia Grout, head of the physical education department, who is in charge of the course, warned the defense-minded women that the physical fitness branch of the activity was no place for anyone who felt they couldn't take strenuous exercises and the meat strenuous exercises.

Many members of the class felt that it is an excellent opportunity to kill two birds with one stone by not only adding the physical fitness to their physical fitness measurements. Those who decide to flit instead are expected to start knitting sweaters for British War Relief as their activity.

Most Reasonable Prices in North Carolina

Drapery and Slip Cover Material From the Mill

See or Call
Mrs. R.L. Crowder
1005 Carolina Ave.
Near Watt Hospital

- DINING
- DANCING
- CURB SERVICE

THE FORKS

"Food As You Like It"

Intersection Wake Forest and Raleigh Highways

Complete Your Perfect HOMECOMING WEEKEND

BOWLING... at
Durham's Most Conveniently Located
Alleys

Morris Street Near Five Points

DURHAM BOWLING ALLEYS



\$24.50

Make it More Livable with
Substantial Furniture from
our wide selections

\$19.93



\$7.95

\$19.93

\$19.93

\$19.93

\$19.93

\$19.93

\$19.93

\$19.93

\$19.93

\$19.93

VAN'S

Fresh California Orange

5c per Glass

Also

•Grape

•Pineapple

•Large 5c Sandwiches

DROP IN TO SEE US!

We Have the Best Food

and the Lowest Prices

you'll find anywhere

118 E. MAIN STREET

ROGERS FURNITURE CO.

320 East Chapel Hill Street

SPORTS



The Duke Chronicle



SPORTS

SPORTSCASTING... Steve Lach Will Lead Devil Attack In Revenge Clash Tomorrow

By MARTIN PARKER

A Gross Error in the Net Game

An apparently harmless and insignificant ruling in the Southern conference system came to our attention recently, and it was pointed out that an injustice is being done a fine athlete because of it. The case in point is the ruling that prevents any student of a Southern conference school from participating in a collegiate sport if at some previous time he represented another college in that sport, regardless of whether or not he played on a freshman or varsity team. The only allowance made is that the student may, after a year's attendance at the Southern conference college, represent his new school in some other sport. Obviously, the main reason behind the ruling is the prevention of big colleges from "buying" freshman football talent from other institutions. From that standpoint, the restriction is probably of great value. But there has arisen another situation which appears to deserve different treatment.

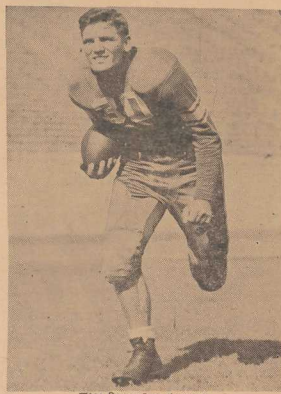
The case we are concerned with at the moment is the ineeligibility of Mort Heller to play on the Duke tennis team. Mort transferred to Duke after spending his freshman year at the University of Pennsylvania. While there, he played on the freshman tennis team. When he came to Duke, by virtue of the ruling we have cited above, he was prevented from playing on the tennis team. That was two years ago. Mort is now a senior and, of course, has not been able to play on the Duke court team. It should be quite obvious from what has taken place in the years since Mort left Pennsylvania that he didn't come to Duke just to play tennis. Had that been the case, he undoubtedly would have left shortly after he arrived. It seems to this observer that a different aspect of a rule that was originally intended to protect the smaller colleges along the football line should be considered. Simply because he thought one institution was better for him academically, a fine athlete has been prevented from playing the sport closest to his heart for his Alma Mater. Something should be done about it.

Some Good Intramural Intentions

One of the most progressive moves undertaken by the Duke intramural department in quite some time came to our attention the other day in the form of a neatly mimeographed sheet of paper headed simply "Football Penalty Sheet." In conjunction with this has come an announcement concerning Gerry Gerard's new school for intramural referees. Adding the two together nets the conclusion that an attempt is going to be made this year to reduce the number of intramural football injuries and provide more competent officials. It is probably assumed by Gerard that the accomplishing of the latter plan will have a direct bearing on the former. Right or wrong, it's a good try.

Obviously, a great number of intramural football injuries are caused by infractions of the rules. In the past, the referees have been neither too quick in noticing these violations or in penalizing the violator. Gerard figures that schooling men in the art of officiating will help them in noticing illegal play. In addition to this is the part the football penalty sheet will play in reducing injuries. Under a new plan, the referee will keep a careful check on how many times various rule-infractions occur. This tabulation will be studied by Gerard and his associates with the hope that they may be able to revise the rules in such a way that certain unfavorable and dangerous elements of play will be eliminated.

Sophomore Backfield Stars



TOM DAVIS - DUKE HALFBACK



LEO LONG - DUKE FULLBACK

Duke-Tennessee Record

The Duke-Tennessee football rivalry dates back to 1931, when Wallace Wade first came to Duke. In all his years of coaching, Wade has been followed by a "flux" that has never enabled one of his clubs to beat Tennessee in the latter's backyard, Knoxville.

	Duke	Tenn.
1931	0	32
1932	13	16
1933	10	2
1934	6	14
1935	19	6
1936	13	15
1937	0	9
1940	0	13
—	—	—
—	63	91

Duke: won 2, lost 5, tied 1.

Intramural Department Releases Grid Rules

The variations of the rules for touch football from the rules for regulation football are outlined below. In all other respects touch football rules are the same as those for intercollegiate football.

Size of the Field—The dimensions of the touch football field are: Maximum 360 x 160 feet. Minimum 240 x 120 feet. These dimensions include the end zones.

Field Markings—The field shall be zoned into strips of 20 yards each, all of which are parallel to the goal lines.

Number of Players—Nine players shall constitute a team. On offense five players must be on the line of scrimmage and four players at least one yard behind the line at the time the ball is snapped.

Equipment of Players—Players are prohibited from wearing the following: baseball, track or metal cleated shoes, padded suits or special protective devices such as shoulder pads, helmets, etc.

Substitutions—Unlimited substitutions will be permitted.

Length of Game—Two periods of 20 minutes each will constitute a game. An alternative method for determining the length of a game is to allow two periods of 20 plays each from scrimmage.

Time Outs—Three time outs in one half for each team. **Point of Kick-off**—The kick-off shall be made at a point 60 yards from the opponent's goal line.

Yardage and Downs—When the ball is first down in a zone, the team in possession of it is allowed four downs in which to move it from that point into the next zone.

Forward Pass—A forward pass may be made from any point behind the line of scrimmage.

Duke Ace Expected To Bear Main Burden of Devil Attack

(Continued from page one)

In ready reserve behind Davis will be one of the nation's fastest ball carriers, shiftier Mort Sturser, a climax runner who has caught the fancy of Duke football followers with his brilliant running.

Duke Looks To Lach

But it will be on the broad shoulders of Steve Lach that the major part of Duke's offensive power will be placed. A triple threat back who got off to a brilliant 1941 start last week by averaging 17 yards carrying the ball, Steve is the man to watch. Last year this grid star, who plays out on the wing, led the nation in pass-receiving and tomorrow he will be the target for many of Tommy Davis' heaves.

Defense was the keynote of practice sessions in both camps all week. With the nation's experts predicting a free-scoring

wide-open fracas, the club that sets up the most adequate defense is expected to emerge the victor.

Tomorrow Is the Big Test

For Duke, tomorrow's battle will be the first real test in a season that offers battles with Colgate, Pittsburgh, and Georgia Tech. Tennessee holds a 32-7 decision scored over Furman two weeks ago in the Vols' only start of the year. The Westerners are good. For the past half decade they have boasted one of the nation's top teams, in eight games with the Blue Devils, they have bested Wade's warriors five times.

If the Duke club ever intends to show that it has the stuff this year for a banner campaign, a season to bring back memories of the famed 1938 team, then tomorrow is the day to do it. It should be a great ball game.

Eligible Forward Pass Receivers—Any member of either team is an eligible forward pass receiver.

Touchback—The touchback rule is the same as in regulation football, except that an incomplete 4th down pass goes back to the spot of the preceding down.

Fumbles—A player shall not be permitted to leave his feet while in the act of recovering or attempting to recover a loose or fumbled ball, i.e. the weight of his body must be squarely on his feet throughout.

Touching or Tackling—A touch (tackle) occurs when an opponent touches the ball carrier with both of his hands simultaneously. The ball shall be declared dead at the point where the touch occurred. No part of the toucher's body, except his feet, shall be in contact with the ground throughout the touch.

Blocking—Blocking shall be permitted on the line of scrimmage as in regulation football. In the open, no part of the blocker's body except his feet shall be in contact with the ground throughout the block.

Use of the Hands—Defensive players are restricted in the use of their hands to the shoulders and body of offensive blockers. **Important—Penalties**

1. Unnecessary roughness in "touching" a player, including leaving of the feet by "toucher." Penalty: 15 yards.

2. Parts of the body other than the feet in contact with the ground in blocking. Penalty: 15 yards.

3. Illegal recovery or attempt to recover a fumbled ball. Penalty: loss of the ball and the succeeding down will be "first down."

4. Illegal use of the hands by defensive players. Penalty: 15 yards.

Two Tennessee Ducks

Two of the Duke men down in the stadium tomorrow afternoon will be playing against their former neighbors. Wallace Wade, the Blue Devil coach, hails from Trenton, Tennessee. Tommy Prothro, Wade's senior quarterback, makes his home in Memphis.



Duke's sartorial taste behind a window pane

DUKE UNIVERSITY
HABERDASHERY
DURHAM, N.C.

All returning Duke lettermen, and all students now at school who have won their varsity "D's", are reminded that the Varsity club will hold an open house in its club room in the new gym after tomorrow's game.



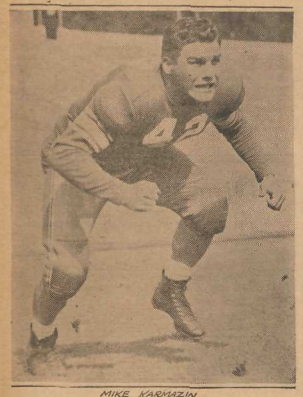
SPORTS

Friday, October 3, 1941



Candidates for sophomore intramural managers report to the office Monday at 1:30. Names of students entering the High Point trophy competition must be in the office by Wednesday, October 8.

Karmazin, Blue Devil Tackle, Rated Potential All-American



MIKE KARMAZIN

It was first down for Pitt last year and a yard to go to pay dirt, if the Panthers went over it was all over for Duke. Four times Pitt crashed into the Duke line. Four times they were stopped dead. Each time it was Captain Winterston and Mike Karmazin, star guard, who brought down the Pitt backs.

In such a way Alex Winterston closed his collegiate grid career, and Karmazin added another brilliant chapter to his. Mike says this was probably the biggest thrill of his football days. Mike's football started for Northwestern High school back in Irwin, Pennsylvania. Here Mike played guard and fullback, captaining the team in his senior year. Mike was twice all-state. Mike started his football day at Duke with a bang. He held back tackle on the brilliant 1937 frosh squad. The team was undefeated, and no wonder—Lach, McDonough, Prothro, Gill, Goldner—were but a few of the stars.

Intramural Grid Games Postponed

Delay Necessitated Because of Bonfire

The opening of the intramural football season, scheduled for last Wednesday, has been postponed until Monday, October 6. This delay has been necessitated by the utilizing of intramural fields for the Homecoming game bonfire and parking space.

All the games in the schedule have been moved back, so that the closing date will be Wednesday, October 22. Freshman teams will begin play Thursday, October 9.

Intramural rules have been published, and all managers of freshman houses and fraternities are urged to secure copies. This set of regulations will estimate many of the elementary questions which arise on the playing field.

Intramural Football

DIVISION I

Alpha Tau Omega
Phi Delta Theta
Sigma Chi
Sigma Nu
Sigma Phi Epsilon
Towson Alpha
Southgate Hall

DIVISION II

Independents
School of Religion
Sigma Alpha Epsilon
Lambda Chi Alpha
Pi Kappa Alpha
Beta Theta Phi
Kappa Alpha

DIVISION III

Chi Phi
Delta Tau Delta
Delta Sigma Phi
Kappa Sigma
Q.P.'s
Zeta Beta Tau

DIVISION IV

The seven freshmen houses:
GAMES FOR MONDAY, OCTOBER 6
3 o'clock
Alpha vs. Town Boys Club
Independents vs. Beta Theta Phi
Delta Sigma Phi vs. Chi Phi
Kappa Alpha

4 o'clock
SPE vs. Southgate
Kappa Alpha vs. Pi Kappa Alpha
Chi Phi vs. Q.P.'s

6 o'clock
Sigma Chi vs. Sigma Nu
SAE vs. Lambda Chi Alpha
Delta Sigma Phi vs. Kappa Sigma

8 o'clock
SPE vs. Southgate
Kappa Alpha vs. Pi Kappa Alpha
Chi Phi vs. Q.P.'s

10 o'clock
Sigma Chi vs. Sigma Nu
SAE vs. Lambda Chi Alpha
Delta Sigma Phi vs. Kappa Sigma

12 o'clock
SPE vs. Southgate
Kappa Alpha vs. Pi Kappa Alpha
Chi Phi vs. Q.P.'s

2 o'clock
Sigma Chi vs. Sigma Nu
SAE vs. Lambda Chi Alpha
Delta Sigma Phi vs. Kappa Sigma

4 o'clock
SPE vs. Southgate
Kappa Alpha vs. Pi Kappa Alpha
Chi Phi vs. Q.P.'s

6 o'clock
Sigma Chi vs. Sigma Nu
SAE vs. Lambda Chi Alpha
Delta Sigma Phi vs. Kappa Sigma

8 o'clock
SPE vs. Southgate
Kappa Alpha vs. Pi Kappa Alpha
Chi Phi vs. Q.P.'s

10 o'clock
Sigma Chi vs. Sigma Nu
SAE vs. Lambda Chi Alpha
Delta Sigma Phi vs. Kappa Sigma

12 o'clock
SPE vs. Southgate
Kappa Alpha vs. Pi Kappa Alpha
Chi Phi vs. Q.P.'s

The Goed In Sports

by SHIRLEY BLUME

W.A.A. To Hold Dance

Coming as a revelation to this writer was information the other evening which confirms a suspicion that the W.A.A. is not strictly an athletic organization. In line with a most varied and extensive program, social activities will play a large part in the current efforts of the association.

The W.A.A. has decided to sponsor a square dance on October 17, the eve of the Duke-Col. game. The dance will be held in the woman's gym immediately following the pep rally that night, and informality will be the keynote. The proverbial "socks and saddles" will be quite up to social standards. To us, the affair sounds like a good opportunity to build up some pre-game pep.

Proceeds from the dance will be added to a fund which the class of '41 started last year when they donated \$400 toward the building of a recreational lodge. Have you heard about this lodge-plan before? It hasn't reached much publicity in the past but seems like a grand idea.

The lodge will be constructed with hiking distance from the campus. It will be for the use of men and women students. Off in the huge Duke forest, it will provide one more place in which to spend our spare time, with adequate facilities for some group sports in the vicinity.

Clubs Already Active
Nearly all the sport clubs have had meetings by now, and several of them have begun to get under way. Two which have already started in grand style are the riding and golf clubs.

The riders had their first lesson last Sunday, as was probably apparent to everyone who saw some girls limping about the campus with stiffened muscles during the week. They had their second ride this afternoon.

Golfers Take to Links
On the golf course, Helen Jackson, Nancy Wren, Betty Lee Brown, Edith Alley, Carolyn King, Marjorie Wynne, Ruth Kautsner, and Jane Andrews composed the two foursomes that went around the Hillsdale course this afternoon. Angela Jarrell, president of the club, has announced that a badge will be awarded to everyone who breaks 100 during the year. Angela has also asked us to remind all who would-be golfers that the only qualification for membership in the club—set in all W.A.A. clubs—is interest in the sport itself.

McDonough Heads Duke Varsity Club
At a recent meeting, the Duke Varsity club elected Bob McDonough, senior tackle on the football team, president. Mack Johnston was elected vice-president. Ray Nasher, treasurer, Don Hill, Class of '39, continues as secretary.

The Varsity club has announced plans to hold an open house for active and returning "D" winners in its club room in the new gymnasium tomorrow after the football game.

DANCING
With instructions Tuesday Night, 8 to 10
Private Lessons by Appointment
Satterfield Studio
334 W. Main Tel. P-6441

Buy yourself The University-Gab—a brand new LEE Water-Blue—that costs only \$5. You're in one of the smoothest hats you ever wore (with matching gaudy band and brim binding) . . . you're in style with your hat and in clover with the gals!

LEE HATS 358 Fifth Avenue, New York
* Reg. U.S. Pat. Off.

Fall Entries Set Record In IM Card

Participants Number Over One Thousand

Getting off to a roaring start, the Intramural fall sports program this year set a new high for individual participants, establishing new records in handball and tennis.

In handball, 454 men signed up, topping the previous high of 450, set in the fall of 1936. Last year 334 participated in the fall handball tournament, in which Sigma Alpha Epsilon came through with high point honors. Mort Heller and Ray Nasher, ZBT, topped the doubles table, and Heller was singles champion. The intramural handball is under the standard AAU handball rules, and one man may enter both singles and doubles matches.

Fall tennis also established a new record with 588 participants, breaking the record of 578 set in the fall of 1939. Last fall's entry list was 538. Kappa Alpha took high honors last fall, with Heller winning the singles and teaming with Hub Kanter to take the doubles. This fall, the American Lawn Tennis Association Rules will govern all matches, and one man may enter both singles and doubles matches. The rules state that two out of three sets will determine the winner, and also that claims for forfeits must be in the office in writing by 5 p.m. of the final day of that round.

First round matches must be completed by October 10.

It's Here . . . THE LEE University-Gab \$5

The smoothest hat you ever saw. A new court shade with garbeline band and binding.

van Shaden's 118 West Main

REMEMBER! To Come To Geo. W. Ferrell Class of '31 and his Expert Watchmakers For Watch Repair Work

Always anxious to help Duke students with their jewelry needs 168 W. Parrish Street Opposite Silvers

THE WASHINGTON DUKE CLEAR STAND is North Carolina's Most Comprehensive Pipe Shop. It's truly a "pipe-lover's paradise."

DR. GRABOW is Mechanically Pres-Smoked

DR. GRABOW is Mechanically Pres-Smoked

DR. GRABOW is Mechanically Pres-Smoked

DR. GRABOW is Mechanically Pres-Smoked

DR. GRABOW is Mechanically Pres-Smoked

DR. GRABOW is Mechanically Pres-Smoked

DR. GRABOW is Mechanically Pres-Smoked

DR. GRABOW is Mechanically Pres-Smoked

DR. GRABOW is Mechanically Pres-Smoked

Coach Wade Relies on a Southgate Inmate Who Plays Major Role in Devil Grid Fate



PETE GODDARD-DUKE GUARD

Blue Devil Soccerists Prepare For Starter Against Maryland

The Duke soccer team held another strenuous week of drills and scrimmages in preparation for their opening meet with the University of Maryland booters at College Park on October 11. Since 1939, when the Terrapins first were added to the Blue Devil schedule, the Duke team has not been able to defeat the Old Liners. Following the crowd, which will be held in the morning, the entire team will attend the Duke-Maryland grid clash in Baltimore.

Up at seven and in bed by twelve is the length of Pete's day. In between two hours, he will be called into active naval service next June. He spent the last summer on duty with the navy in Atlanta, where he earned a commission. During other summers he labored with the Carolina Steel and Iron Company in Greensboro.

Up at seven and in bed by twelve is the length of Pete's day. In between two hours, he will be called into active naval service next June. He spent the last summer on duty with the navy in Atlanta, where he earned a commission. During other summers he labored with the Carolina Steel and Iron Company in Greensboro.

Up at seven and in bed by twelve is the length of Pete's day. In between two hours, he will be called into active naval service next June. He spent the last summer on duty with the navy in Atlanta, where he earned a commission. During other summers he labored with the Carolina Steel and Iron Company in Greensboro.

Up at seven and in bed by twelve is the length of Pete's day. In between two hours, he will be called into active naval service next June. He spent the last summer on duty with the navy in Atlanta, where he earned a commission. During other summers he labored with the Carolina Steel and Iron Company in Greensboro.

Up at seven and in bed by twelve is the length of Pete's day. In between two hours, he will be called into active naval service next June. He spent the last summer on duty with the navy in Atlanta, where he earned a commission. During other summers he labored with the Carolina Steel and Iron Company in Greensboro.

Up at seven and in bed by twelve is the length of Pete's day. In between two hours, he will be called into active naval service next June. He spent the last summer on duty with the navy in Atlanta, where he earned a commission. During other summers he labored with the Carolina Steel and Iron Company in Greensboro.

Up at seven and in bed by twelve is the length of Pete's day. In between two hours, he will be called into active naval service next June. He spent the last summer on duty with the navy in Atlanta, where he earned a commission. During other summers he labored with the Carolina Steel and Iron Company in Greensboro.

Up at seven and in bed by twelve is the length of Pete's day. In between two hours, he will be called into active naval service next June. He spent the last summer on duty with the navy in Atlanta, where he earned a commission. During other summers he labored with the Carolina Steel and Iron Company in Greensboro.

Up at seven and in bed by twelve is the length of Pete's day. In between two hours, he will be called into active naval service next June. He spent the last summer on duty with the navy in Atlanta, where he earned a commission. During other summers he labored with the Carolina Steel and Iron Company in Greensboro.

Up at seven and in bed by twelve is the length of Pete's day. In between two hours, he will be called into active naval service next June. He spent the last summer on duty with the navy in Atlanta, where he earned a commission. During other summers he labored with the Carolina Steel and Iron Company in Greensboro.

Up at seven and in bed by twelve is the length of Pete's day. In between two hours, he will be called into active naval service next June. He spent the last summer on duty with the navy in Atlanta, where he earned a commission. During other summers he labored with the Carolina Steel and Iron Company in Greensboro.

Up at seven and in bed by twelve is the length of Pete's day. In between two hours, he will be called into active naval service next June. He spent the last summer on duty with the navy in Atlanta, where he earned a commission. During other summers he labored with the Carolina Steel and Iron Company in Greensboro.

Up at seven and in bed by twelve is the length of Pete's day. In between two hours, he will be called into active naval service next June. He spent the last summer on duty with the navy in Atlanta, where he earned a commission. During other summers he labored with the Carolina Steel and Iron Company in Greensboro.

Up at seven and in bed by twelve is the length of Pete's day. In between two hours, he will be called into active naval service next June. He spent the last summer on duty with the navy in Atlanta, where he earned a commission. During other summers he labored with the Carolina Steel and Iron Company in Greensboro.

Up at seven and in bed by twelve is the length of Pete's day. In between two hours, he will be called into active naval service next June. He spent the last summer on duty with the navy in Atlanta, where he earned a commission. During other summers he labored with the Carolina Steel and Iron Company in Greensboro.

Of all things, right smack in the center of the Duke first-string line is a naval ensign who is only a few months away from a degree in civil engineering. He is Pete Goddard, the watch fob guard who has been putting all of his 160 pounds into an effort to justify Wallace Wade's shifting of Mike Karmazin over to tackle and giving the guard job back to a player who couldn't quite make the grade last fall.

What Pete lacks in husky, physical strength, he makes up in scrappiness . . . he's rugged and fast and plays the game for all that worth. Although this is his first season on the first-string, he earned his letter last year as a Junie.

Hailing from Rocky Mount, C. Pete made all-state high school honors two consecutive years, and played against his peers in Maryland, Virginia, North Carolina, and South Carolina, then of Charlotte, in the state finals one year.

Pete, who says his greatest thrill was watching the Devil's goal-line stand against Pittsburgh last fall, expects that he will be called into active naval service next June. He spent the last summer on duty with the navy in Atlanta, where he earned a commission. During other summers he labored with the Carolina Steel and Iron Company in Greensboro.

Up at seven and in bed by twelve is the length of Pete's day. In between two hours, he will be called into active naval service next June. He spent the last summer on duty with the navy in Atlanta, where he earned a commission. During other summers he labored with the Carolina Steel and Iron Company in Greensboro.

Up at seven and in bed by twelve is the length of Pete's day. In between two hours, he will be called into active naval service next June. He spent the last summer on duty with the navy in Atlanta, where he earned a commission. During other summers he labored with the Carolina Steel and Iron Company in Greensboro.

Up at seven and in bed by twelve is the length of Pete's day. In between two hours, he will be called into active naval service next June. He spent the last summer on duty with the navy in Atlanta, where he earned a commission. During other summers he labored with the Carolina Steel and Iron Company in Greensboro.

Up at seven and in bed by twelve is the length of Pete's day. In between two hours, he will be called into active naval service next June. He spent the last summer on duty with the navy in Atlanta, where he earned a commission. During other summers he labored with the Carolina Steel and Iron Company in Greensboro.

Up at seven and in bed by twelve is the length of Pete's day. In between two hours, he will be called into active naval service next June. He spent the last summer on duty with the navy in Atlanta, where he earned a commission. During other summers he labored with the Carolina Steel and Iron Company in Greensboro.

Up at seven and in bed by twelve is the length of Pete's day. In between two hours, he will be called into active naval service next June. He spent the last summer on duty with the navy in Atlanta, where he earned a commission. During other summers he labored with the Carolina Steel and Iron Company in Greensboro.

Up at seven and in bed by twelve is the length of Pete's day. In between two hours, he will be called into active naval service next June. He spent the last summer on duty with the navy in Atlanta, where he earned a commission. During other summers he labored with the Carolina Steel and Iron Company in Greensboro.

Up at seven and in bed by twelve is the length of Pete's day. In between two hours, he will be called into active naval service next June. He spent the last summer on duty with the navy in Atlanta, where he earned a commission. During other summers he labored with the Carolina Steel and Iron Company in Greensboro.

Up at seven and in bed by twelve is the length of Pete's day. In between two hours, he will be called into active naval service next June. He spent the last summer on duty with the navy in Atlanta, where he earned a commission. During other summers he labored with the Carolina Steel and Iron Company in Greensboro.

Up at seven and in bed by twelve is the length of Pete's day. In between two hours, he will be called into active naval service next June. He spent the last summer on duty with the navy in Atlanta, where he earned a commission. During other summers he labored with the Carolina Steel and Iron Company in Greensboro.

Up at seven and in bed by twelve is the length of Pete's day. In between two hours, he will be called into active naval service next June. He spent the last summer on duty with the navy in Atlanta, where he earned a commission. During other summers he labored with the Carolina Steel and Iron Company in Greensboro.

Up at seven and in bed by twelve is the length of Pete's day. In between two hours, he will be called into active naval service next June. He spent the last summer on duty with the navy in Atlanta, where he earned a commission. During other summers he labored with the Carolina Steel and Iron Company in Greensboro.

Up at seven and in bed by twelve is the length of Pete's day. In between two hours, he will be called into active naval service next June. He spent the last summer on duty with the navy in Atlanta, where he earned a commission. During other summers he labored with the Carolina Steel and Iron Company in Greensboro.

Up at seven and in bed by twelve is the length of Pete's day. In between two hours, he will be called into active naval service next June. He spent the last summer on duty with the navy in Atlanta, where he earned a commission. During other summers he labored with the Carolina Steel and Iron Company in Greensboro.

Up at seven and in bed by twelve is the length of Pete's day. In between two hours, he will be called into active naval service next June. He spent the last summer on duty with the navy in Atlanta, where he earned a commission. During other summers he labored with the Carolina Steel and Iron Company in Greensboro.

Up at seven and in bed by twelve is the length of Pete's day. In between two hours, he will be called into active naval service next June. He spent the last summer on duty with the navy in Atlanta, where he earned a commission. During other summers he labored with the Carolina Steel and Iron Company in Greensboro.

Up at seven and in bed by twelve is the length of Pete's day. In between two hours, he will be called into active naval service next June. He spent the last summer on duty with the navy in Atlanta, where he earned a commission. During other summers he labored with the Carolina Steel and Iron Company in Greensboro.

PHONE R-2814
Durham Motor Court
MORALLY CLEAN

NEW FIREPROOF MODERN COTTAGES
CLEAN - QUIET - COMFORTABLE
Tub and Shower in Each Room. Inner-spring Mattresses. Air-Conditioned Warm Air Heat. Attached Garage

On U. S. 15-501 (Durham-Capel Hill Road)
5 miles from Durham
References: Durham Chamber of Commerce,
Officials of Duke University and Dunham Hines

OLD GRADS!

"Let's Renew Our Acquaintance"

We invite you to come in after the game and BOWL with your friends

The Center Bowling Alley

212 RIGSBEE AVENUE R-6271



CARL RAY CONNORS TRAINER'S CENTER

Win or Lose
We're 100% Behind You!

But You Duke Students Can Always "Win" By Getting "TOMORROW'S STYLES TODAY"

Campus Representative: RALPH STARR
Phi Delta House . . . B-302

Pritchard-Bright & Company

Washington Duke Hotel Building
Durham, N. C.



BOB BARNETT, Duke Center

