



The Duke Chronicle

Founded 1905 - No. 34

Duke University, Durham, N. C.

Friday, April 15, 1949

FEATURE:
Engineers Give First Post-War Show Today, Tomorrow-P. 4
SORTS:
Allen Named Eleven Captain For Next Year-P. 5

REACTIVATED SGA OFFICERS FACE RUFF

Reactivated Order of Red Friars Honors Seven Seniors in First Tapping Since 1943

Honor Bestowed Is Highest Given To Duke Seniors

Additional Seven Yet To Be Tapped By Group In May

In the first tapping in seven years, the secret Order of Red Friars yesterday inducted seven members of the senior class who will in turn participate in the reactivation of the Order by tapping seven rising seniors this spring.

Membership in the Order has always been restricted to seven seniors. Initiation into Red Friars has been regarded as the highest recognition attainable by undergraduate men at Duke University.

New Members
The new Red Friars are: Fred Polger, Fenton Glines, Harold Jackson, Will Jackson, Chester M. Johnson, Art Polner, and Robert Welch.

The most secret and respected group of the Duke Campus when it was active, Red Friars is one of the oldest and most revered institutions of the University. This order is unique at Duke University.

Red Friars as an active undergraduate organization was discontinued in 1943 because of war-time conditions on the campus. Specific plans relative to reactivation were prescribed at that time.

Annual members in the university vicinity acting as trustees of the Order have kept it alive during the period, and are responsible for its reactivation.

Members Will Pay \$5.50 for Tickets To S' n' S Dances

Assessments for the Thornhill week end will be \$5.50 an individual. This includes the weekly Spivak dances, Roger Kitcher, Shoe and Slipper Club, and this week.

Commenting on the quality of Friday night's dance, Kitcher said, "Due to technical difficulties beyond our control, the Friday night dance did not approach Shoe and Slipper standards." Before the dance the sound system was working as well as could be expected.

Use Spivak Acoustics
It was the same system that was used for the Spivak dance but the seating arrangements and types of music were different.

The Shoe and Slipper Club met last night to discuss the defects in the way the Thornhill week end was handled and handed out a list of improvements. It will also begin discussion and plans for next fall's dance.

Appoint Jim Urban As IFUC Handbook Editor Next Year

Jim Urban will be editor of the IFUC Handbook for 1949-1950. Announcement of the appointment was made last Tuesday by JFC President Bill Grier.

Each year the Men's Interfraternity Council publishes the handbook for distribution to incoming freshmen to acquaint them with the fraternity system and with individual fraternities on campus.

Urban is a member of Theta Chi and Sigma Delta Psi. He has served on IFUC during the past year and is on the Omicron chapter.

Engineers Take Unexpected Block Away from Hazel

Bouncing Petitions Mystify Members Of Both Combines

West Campus voters blocked 1610 strong to the polls for yesterday's general SGA election and set an all-time record for Duke University. The high was 1850 ballots in 1946. Indispensable contributed little to this number, however, causing both parties to wonder vaguely if all the fuss over independent votes was quite worth while. About 325 independents came to the polls, in contrast with over 1250 fraternity men.

Engineers turned out better than yesterday's voters, accounting for 318 ballot-votes yesterday. Last year only 144 cast their ballots. SGA officials said the new ballot box in the Engineering building accounted for some of this increase.

Shipwreck Strength
Only the engineers cast their full strength of 318 votes for Warnick, unexpected candidate for SGA secretary, as well as for presidential campaign.

Warnick, supported by 318 votes for SGA president, 163 went to Bob Hazel, Student Engineers' candidate for George Shipwreck, while the remaining 30 went to Shipwreck. Hazel, who was expected for Hazel from his engineers, and Shipwreck's surprising success in the election accounted for much to tip the scales in his favor in yesterday's preliminaries.

Student party leaders point out that the committee of the engineering building and to their own overconfidence as reasons for Union strength there.

Run-Off Slated
Only in the elections for rising sophomore officers are run-offs unnecessary. In the case of the elections and the presidency of the senior class will go into second round.

Students party leaders point out that the committee of the engineering building and to their own overconfidence as reasons for Union strength there.

Classes of '51, '52 Plan Joint Dance On West April 30
Plans for the combined Sophomore-Freshman Ball are progressing under the direction of chairman Dick Stride.

The scheduled for Saturday night, April 30, from 8-12 in the Old City.

YM Seeks Men to Help Freshman Orientation
Applications from men interested in assisting in next fall's Freshman Orientation Week are now being accepted.

YMCA to Sponsor Amateur Show May 21 In East Auditorium
All students are eligible to compete in a campus-wide amateur show sponsored by the YMCA in the East Auditorium.

Y Duties
Chairmen will be chosen soon to head preparation for the "Y's" part in directing the East Campus open houses, which are to be held on Saturday evening, September 17; the Joint dinner for men and women, on Sunday House on Sunday afternoon.

Could listed as the general duties of the "Y" men such as: serving as meeting all about the campus, serving at information desks, helping to park cars, directing examinations, assisting in the physical examinations, and the swimming team.

Men interested in Freshman Orientation should contact Helen Laughlin and Johnny Croft are co-chairmen in charge of the hunt.

Large Vote Leaves 7 Posts Unfilled, Elias Out of Race

Elet In Two Weeks; Union Party Takes 3 Pub Board Posts

Deadlocked for the presidency of the Men's Student Government, George Shipwreck and Bob Hazel must face a second run-off election after final tabulation of a record vote last night, disqualifying third candidate Bill Elias. SGA legislators will vote on the new date of the second election, which must also fill all offices in the rising senior and junior classes. The run-off must be held within two weeks.

Warnick Secretary
Union Party candidate Ed Warnick won the only SGA post in the election.

This is the way the tally-sheet looked last night. Last reports came in at midnight:

Table with 2 columns: Candidate and Votes. Rows include: President (Shipwreck 790, Hazel 707, Elias 313), Secretary (Warnick 1416), Treasurer (Thomas 672, Jones 469, Jones 469), Public Board (top four are elected), and various other positions.

Progress Delayed in Starting Proposed SGA Book Exchange

Strolling down campus after learning the results of yesterday's election SGA candidates Bob Hazel and George Shipwreck, who must compete again in an early runoff, look unsuccessful. Bill Elias, who was disqualified in the three-way race, SGA officials will vote on the date of the second election, which must be held within two weeks.

COD Established Here 'To Further Relations'

Something new in the galaxy of campus organizations has appeared, a Committee on Dating. Otherwise known as COD, it has been established to further relations between East and West Campuses.

After a careful study of campus life and a personal examination of the committee found that most students will schedule a date on Friday, May 6, if the idea seems successful. The boys will follow the normal procedure of asking the girls for dates at this function.

Student Forum Series To Present Culbertson
Ely Culbertson, bridge authority and lecturer on international affairs, comes to Duke University on Tuesday, April 21, as the last speaker on the Student Forum series this year.

He will speak in the Woman's College auditorium at 8 p.m. on "Our Search for World Peace." Culbertson was born in Romania, where his father was an American mining engineer. With his coming of the Red revolution, he was jailed by the Russians, managed to escape to the United States. He attended Yale University and has become famous for his famous Culbertson system of bridge.

Tickets Go on Sale Tuesday for Spring Coed Ball April 29
Needs for the Spring Coed Ball, set for Friday, April 29, in the West campus gym, will be sold Tuesday, Wednesday, and Thursday of next week from 8:30 to 9:30 p.m. in the East Campus Union lobby.

Surrounded by decorations carrying out the theme of "Nep-tunalia," the ancient festival of Neptune, for 1949 May Queen, and her court will be presented during the intermission program. Fred Whitener and his Duke Ambassadors will furnish music for the occasion.

Progress Delayed in Starting Proposed SGA Book Exchange

COD Established Here 'To Further Relations'

Something new in the galaxy of campus organizations has appeared, a Committee on Dating. Otherwise known as COD, it has been established to further relations between East and West Campuses.

After a careful study of campus life and a personal examination of the committee found that most students will schedule a date on Friday, May 6, if the idea seems successful. The boys will follow the normal procedure of asking the girls for dates at this function.

Student Forum Series To Present Culbertson
Ely Culbertson, bridge authority and lecturer on international affairs, comes to Duke University on Tuesday, April 21, as the last speaker on the Student Forum series this year.

He will speak in the Woman's College auditorium at 8 p.m. on "Our Search for World Peace." Culbertson was born in Romania, where his father was an American mining engineer. With his coming of the Red revolution, he was jailed by the Russians, managed to escape to the United States. He attended Yale University and has become famous for his famous Culbertson system of bridge.

Tickets Go on Sale Tuesday for Spring Coed Ball April 29
Needs for the Spring Coed Ball, set for Friday, April 29, in the West campus gym, will be sold Tuesday, Wednesday, and Thursday of next week from 8:30 to 9:30 p.m. in the East Campus Union lobby.

Surrounded by decorations carrying out the theme of "Nep-tunalia," the ancient festival of Neptune, for 1949 May Queen, and her court will be presented during the intermission program. Fred Whitener and his Duke Ambassadors will furnish music for the occasion.

Appoint Jim Urban As IFUC Handbook Editor Next Year
Jim Urban will be editor of the IFUC Handbook for 1949-1950. Announcement of the appointment was made last Tuesday by JFC President Bill Grier.

Each year the Men's Interfraternity Council publishes the handbook for distribution to incoming freshmen to acquaint them with the fraternity system and with individual fraternities on campus.

Urban is a member of Theta Chi and Sigma Delta Psi. He has served on IFUC during the past year and is on the Omicron chapter.

Members Will Pay \$5.50 for Tickets To S' n' S Dances
Assessments for the Thornhill week end will be \$5.50 an individual. This includes the weekly Spivak dances, Roger Kitcher, Shoe and Slipper Club, and this week.

Commenting on the quality of Friday night's dance, Kitcher said, "Due to technical difficulties beyond our control, the Friday night dance did not approach Shoe and Slipper standards." Before the dance the sound system was working as well as could be expected.

Use Spivak Acoustics
It was the same system that was used for the Spivak dance but the seating arrangements and types of music were different.

The Shoe and Slipper Club met last night to discuss the defects in the way the Thornhill week end was handled and handed out a list of improvements. It will also begin discussion and plans for next fall's dance.

Appoint Jim Urban As IFUC Handbook Editor Next Year
Jim Urban will be editor of the IFUC Handbook for 1949-1950. Announcement of the appointment was made last Tuesday by JFC President Bill Grier.

Each year the Men's Interfraternity Council publishes the handbook for distribution to incoming freshmen to acquaint them with the fraternity system and with individual fraternities on campus.

Hoof 'n' Horn Elects Sugarman President in Wednesday Poll

Al Sugarman will head Hoof 'n' Horn for the 1949-1950 season, following elections for next year's officers held last Wednesday.

The new president, a senior, has been associated with Hoof 'n' Horn and the Duke Flyers for four years. He plans to be here next year as a graduate student in the Duke Law School.

"The aims of the Hoof 'n' Horn Club," Sugarman stated, "are to further an appreciation of musical comedy on campus, and to give all students who so desire the chance to express their talents, whether they be in the creative production, or administration of each year's show."

Business Manager
Next year's business manager will be Chuck Gray. Gray has been in Hoof 'n' Horn for three years. He was manager of the track team and has been active

in campus politics since he has been at Duke. Gray is a member of the Varsity "D" Club and ATO.

Other Officers

In addition to Sugarman and Gray, the following officers of Hoof 'n' Horn were elected:

Vice-president, Tina Bell, Recording Secretary, Gay McLaw, and Corresponding Secretary, Barbara Crutcher.

Executive Council

Elected to the Executive Council were: Skipper Presser, Andy Wilmer, Art Steiner, Ed Lynch, Connie Woodward, Louise Tennant, Fred Conway, and Harry Crigger.

At the same meeting, keys were awarded to Virginia Henke, Bill Wilmer, Ed Lynch, Suzanne Doherty, Andy Doherty, Tina Bell, Tom Kenaston and Jim Bosart.

Junior's Schedule May 14 for Dance In Woman's Gym

With music furnished by the Duke Amphitheater, the annual junior class dance will take place May 14 from 8 to 12 in the Woman's College Gymnasium, dance committee chairman Bob Sile announced at a joint class meeting Tuesday night.

Tickets were sold at the meeting, but will go on sale again within the next ten days. The date bids will be \$1.50 and the stag bid \$1.00. A block of free tickets reserved for the seniors will be released at a date to be announced.

Other committee chairmen are Bob Mitchell, publicity; Tony Taylor and Bill Ward, tickets; Bob Hazel, decorations.

—Runoffs—

Continued From Page One
Truck, while both men were elected to the Engineering Publications Board.

Class officers will in some cases require a run-off election. Elected to senior class offices are Ed Claughton, secretary, and Jack Abe, treasurer. Jack Balick will serve as the class athletic representative. For president of the class, Student Party candidate Brandon Davis and Union Party candidate Charles McEllick compete for the post. Dan Blaylock, Union, and John McMaster, Student, will run for the presidency of the rising junior class, as will Fred Smith and Ben Wiles for class secretary. John Blackburn and Jim Solomon must submit to the run-off election for class treasurer.

New sophomore class representatives to SGA include Lee Rayward scored the greatest margin of victory of all defeating George Grune for presidency of the rising sophomore class. A. B. Pearson was elected secretary and Malcolm Crawford treasurer.

Representatives for the senior class include James Crook, Dick Price, and Bob Roberts.

Refreshments
For Your Functions
Sandwiches, Cakes, Cookies
DUB'S SANDWICH CO.
209 N. Church St.

Nationally Advertised Merchandise
Ray's Jewelers Inc.
213 W. Main St.
Durham, N. C.
Cheerful Credit

SEEMAN

Sorority
Fraternity
Social
Personal
Commercial

PRINTING

Campus Social News

By DIANNE FORRESTER

April 29 is the date set for the four chapter state-wide Lambda Chi Alpha Chapter Girl formal at Hope Valley, music by Johnny Bothwell. . . The queen has already been selected by Bing Crosby — so this may be your big chance . . . at any rate, the 500 Lambda girls and guests expected to attend will certainly enjoy it. Speaking of dances, the ATO's and Phi Psi's have scheduled their pledge dances for next Friday night. . . Keep in mind May 6 and the annual SAE Spring Ball. . . also the Senior dance May 14 and the Sophomore after April 30.

The Easter rabbit runs rampant Sunday afternoon when the ATO's and Alpha Phi's sponsor an egg hunt for the Edgemont youngsters. . . East Duke lawn will never be the same. The ATO's gave an informal coffee Sunday for visiting alumnae Mary Jean Simpson and Helen Werner. To top off the ATO week-end there'll be an open house Sunday the 24th for the brothers and their dates.

Following an inspection of the chapter by district president Thelma J. Brown, Phi Psi's Jane Caldwell and Eloise Parker attended the district convention in Charlotte last week end. To escape from the hectic air of elections, the ATO's and Phi Psi's have planned cabin parties for next Saturday. . . ACHO's have one slated for May 1.

Chi Delta Phi initiated Libby Akers, Jo Allick, Winkie Boone, Denny Forrest, Liz Frost, Cissie Gelsner, Mary Ingerson, Nancy Lombard, Paul McAllister, Norma Martin, Glue Mice, Alice Neesley, Goldie Striner, and Jane Tuttle last night. . . Penny McCreary and Mary Lois Fennester as honorary members.

This ask-your-date-for-the-Sunday-night-sing-along idea sounds very promising if East is willing to support it. . . It is hoped by the CDD (that's Committee on Dating) that this girl-ask-boy arrangement will become a Sunday night tradition. . . and traditions have to start sometime.

By the way, if there's some group that feels slighted, it would be appreciated if said groups would turn in any new items of a social nature to the Chronicle office by 2 p.m. Wednesday.

- Voting Trends -

Continued From Page One
of athletic representatives, giving the three Union candidates for these positions a clear field. Another peculiarity of the election was the disappearance from the final ballots of several candidates for independent representatives from both parties, apparently because of petition confusion.

Union party men lead the race for five of the seven offices going into the finals next week, including the president of SGA. But the two Student Party leaders are candidates for the presidencies of the senior and junior classes.

Student party takes five independent representatives, while the Union Party gets only three. The parties must share one, rising sophomore Guy Fornes.

Only offices in which the parties did not meddle were the faculty to remember which party engineers' representatives to the numerous candidates for Pub Board and the editor of the Trinity College Pub Board posts for Duke-Engineer, although many represented.

SEAFOOD

Delicious lunches as low as 50c. Dozens of Hot and Toasted Sandwiches. Delightful Dinners that will really please you.

Lunches

Dinners

PARTIES

If you are planning a party for all means see us. We specialize in Parties, Banquets and Get-togethers.

Baldwin's Marine Restaurant

We Open 7 A.M. — We Close 9 P.M.

Lipscomb-Gattis Company

Men's Clothing

Since 1917

Phone F-0331

211 West Main St.

L. E. Graham '18—Sec.—Treas.

MILLER'S
HILLSBORO ROAD
Open 12-4 P.M.
EASTER SUNDAY
for
STUDENTS AND PARENTS

FEEL COOL
KEEP COOL
BE COOL
complete line
WHITE JACKETS
\$27.50
at
TUXEDO JUNCTION
601 E. Trinity Ave.
J-1373
SALES — RENTALS
FULL DRESS — TUXEDOS — WHITE JACKETS

Durham's "Exciting" Restaurant
Regular 75c Dinner
● SOUP OR JUICE
● SELECTION OF MEAT
● CHOICE OF TWO VEGETABLES
● DESSERT
● DRINK
THE Palms RESTAURANT
"Your Favorite Steak or Seafood"
305 E. Chapel Hill St.
(Opposite Washington Duke Bus Stop)

GIFTS
for every occasion
SHEAFFER'S
America's FIRST CHOICE

SHEAFFER'S
America's FIRST CHOICE
SHEAFFER'S JEWELRY, SILVER, TRINKETS
Clocks of silver, blue or black
Gifts, \$1.50, \$2.00, \$3.00, \$4.00, \$5.00, \$6.00, \$7.00, \$8.00, \$9.00, \$10.00, \$11.00, \$12.00, \$13.00, \$14.00, \$15.00, \$16.00, \$17.00, \$18.00, \$19.00, \$20.00, \$21.00, \$22.00, \$23.00, \$24.00, \$25.00, \$26.00, \$27.00, \$28.00, \$29.00, \$30.00, \$31.00, \$32.00, \$33.00, \$34.00, \$35.00, \$36.00, \$37.00, \$38.00, \$39.00, \$40.00, \$41.00, \$42.00, \$43.00, \$44.00, \$45.00, \$46.00, \$47.00, \$48.00, \$49.00, \$50.00, \$51.00, \$52.00, \$53.00, \$54.00, \$55.00, \$56.00, \$57.00, \$58.00, \$59.00, \$60.00, \$61.00, \$62.00, \$63.00, \$64.00, \$65.00, \$66.00, \$67.00, \$68.00, \$69.00, \$70.00, \$71.00, \$72.00, \$73.00, \$74.00, \$75.00, \$76.00, \$77.00, \$78.00, \$79.00, \$80.00, \$81.00, \$82.00, \$83.00, \$84.00, \$85.00, \$86.00, \$87.00, \$88.00, \$89.00, \$90.00, \$91.00, \$92.00, \$93.00, \$94.00, \$95.00, \$96.00, \$97.00, \$98.00, \$99.00, \$100.00

SHEAFFER'S
America's FIRST CHOICE
SHEAFFER'S JEWELRY, SILVER, TRINKETS
Clocks of silver, blue or black
Gifts, \$1.50, \$2.00, \$3.00, \$4.00, \$5.00, \$6.00, \$7.00, \$8.00, \$9.00, \$10.00, \$11.00, \$12.00, \$13.00, \$14.00, \$15.00, \$16.00, \$17.00, \$18.00, \$19.00, \$20.00, \$21.00, \$22.00, \$23.00, \$24.00, \$25.00, \$26.00, \$27.00, \$28.00, \$29.00, \$30.00, \$31.00, \$32.00, \$33.00, \$34.00, \$35.00, \$36.00, \$37.00, \$38.00, \$39.00, \$40.00, \$41.00, \$42.00, \$43.00, \$44.00, \$45.00, \$46.00, \$47.00, \$48.00, \$49.00, \$50.00, \$51.00, \$52.00, \$53.00, \$54.00, \$55.00, \$56.00, \$57.00, \$58.00, \$59.00, \$60.00, \$61.00, \$62.00, \$63.00, \$64.00, \$65.00, \$66.00, \$67.00, \$68.00, \$69.00, \$70.00, \$71.00, \$72.00, \$73.00, \$74.00, \$75.00, \$76.00, \$77.00, \$78.00, \$79.00, \$80.00, \$81.00, \$82.00, \$83.00, \$84.00, \$85.00, \$86.00, \$87.00, \$88.00, \$89.00, \$90.00, \$91.00, \$92.00, \$93.00, \$94.00, \$95.00, \$96.00, \$97.00, \$98.00, \$99.00, \$100.00

SHEAFFER'S
America's FIRST CHOICE
SHEAFFER'S JEWELRY, SILVER, TRINKETS
Clocks of silver, blue or black
Gifts, \$1.50, \$2.00, \$3.00, \$4.00, \$5.00, \$6.00, \$7.00, \$8.00, \$9.00, \$10.00, \$11.00, \$12.00, \$13.00, \$14.00, \$15.00, \$16.00, \$17.00, \$18.00, \$19.00, \$20.00, \$21.00, \$22.00, \$23.00, \$24.00, \$25.00, \$26.00, \$27.00, \$28.00, \$29.00, \$30.00, \$31.00, \$32.00, \$33.00, \$34.00, \$35.00, \$36.00, \$37.00, \$38.00, \$39.00, \$40.00, \$41.00, \$42.00, \$43.00, \$44.00, \$45.00, \$46.00, \$47.00, \$48.00, \$49.00, \$50.00, \$51.00, \$52.00, \$53.00, \$54.00, \$55.00, \$56.00, \$57.00, \$58.00, \$59.00, \$60.00, \$61.00, \$62.00, \$63.00, \$64.00, \$65.00, \$66.00, \$67.00, \$68.00, \$69.00, \$70.00, \$71.00, \$72.00, \$73.00, \$74.00, \$75.00, \$76.00, \$77.00, \$78.00, \$79.00, \$80.00, \$81.00, \$82.00, \$83.00, \$84.00, \$85.00, \$86.00, \$87.00, \$88.00, \$89.00, \$90.00, \$91.00, \$92.00, \$93.00, \$94.00, \$95.00, \$96.00, \$97.00, \$98.00, \$99.00, \$100.00

SHEAFFER'S
America's FIRST CHOICE
SHEAFFER'S JEWELRY, SILVER, TRINKETS
Clocks of silver, blue or black
Gifts, \$1.50, \$2.00, \$3.00, \$4.00, \$5.00, \$6.00, \$7.00, \$8.00, \$9.00, \$10.00, \$11.00, \$12.00, \$13.00, \$14.00, \$15.00, \$16.00, \$17.00, \$18.00, \$19.00, \$20.00, \$21.00, \$22.00, \$23.00, \$24.00, \$25.00, \$26.00, \$27.00, \$28.00, \$29.00, \$30.00, \$31.00, \$32.00, \$33.00, \$34.00, \$35.00, \$36.00, \$37.00, \$38.00, \$39.00, \$40.00, \$41.00, \$42.00, \$43.00, \$44.00, \$45.00, \$46.00, \$47.00, \$48.00, \$49.00, \$50.00, \$51.00, \$52.00, \$53.00, \$54.00, \$55.00, \$56.00, \$57.00, \$58.00, \$59.00, \$60.00, \$61.00, \$62.00, \$63.00, \$64.00, \$65.00, \$66.00, \$67.00, \$68.00, \$69.00, \$70.00, \$71.00, \$72.00, \$73.00, \$74.00, \$75.00, \$76.00, \$77.00, \$78.00, \$79.00, \$80.00, \$81.00, \$82.00, \$83.00, \$84.00, \$85.00, \$86.00, \$87.00, \$88.00, \$89.00, \$90.00, \$91.00, \$92.00, \$93.00, \$94.00, \$95.00, \$96.00, \$97.00, \$98.00, \$99.00, \$100.00

DURHAM OFFICE SUPPLY
105 W. Parrish St.
Tel. L-919

CAMP CAPERS LARRY LEARNS JOHNNY
COME ON LARRY! YOU HAVE TO BE ESCORT DOLLY DARE, THE HOLLYWOOD HETARA, OUR CHOSEN PROM-QUEEN!
IMAGINE THIS BIG GO WITH PHOTOGRAPHIC DOLLY DARE! YOU'LL LIKE DOLLY DARE! SHE'S NEW AND LOOT!
JOHNNY'S RIGHT BOY PHILIP MORRIS IS THE ONE CIGARETTE PROVIDED DEFINITELY LESS IRRITATING!
LARRY YOU'VE GOT CIGARETTE SMOKEOV SWITCH TO PHILIP MORRIS AND BIG IT!
ALL RIGHT MEN, GIVE IT A WHIRL!
EASY THERE, APOLLO! THE TRAIN TRIP BORED ME AND I SAVED 100 MARCHIN' APT TO BITE
GET HER SOMESUCH! SWITCH TO A COUPLE OF GENTLE CHAMBERS LIKE PHILIP MORRIS AND ANGELY!
LARRY YOU'VE GOT TOP FOR LITTLE DOLLY DARE! LETS GET OUT THE NEXT CHUGS AND BUDY PHILIP MORRIS!
HOW CAN A GAL BE AS INCANDESCENT AS YOU AND YET SO COOLLY INTELLIGENT!
Use These Words With Tongue In Cheek!
(Put in use ONE every week!)
CHARGECORD (cheer-oh-cho-cho-cho) — A pattern of light and shade.
CIGARETTE HANGOVER — (to be whelped, over pronounced). That state, unadvised taste, that light day feeling in your throat due to smoking CINEMATIC HORN (oh-oh) — In short, a beautiful film state.
HETARA (het-oh-oh) — A playgirl (excellent Greek verb).
INCANDESCENT (in-con-dens-ent) — Glowing.
PISCICOLOR (pis-oh-oh-oh) — Aquadistant.
PTARMAN (pah-oh-oh) — Derived from Pithies, that famous Kiang.
SARTORIAL (sart-oh-oh-oh) — As of a seamy set of threads.
THERMOTROLOGY (therm-oh-oh-oh-oh) — TALK.
VELLITY (vel-oh-oh-oh) — A tight, delicious whole.
PHILIP MORRIS INC.
MADE IN U.S.A.
119 Fifth Ave., N.Y.

SPORTS JACKETS SUMMER FORMALS
As You Like Them
Slacks to Harmonize
From
\$25.00
White Is Right
From
\$23.50
Pants and Accessories Available
PRICHARD-BRIGHT & COMPANY UNIVERSITY STORE
Wagington Duke Hotel Building
Durham

Engineers' Show First Since War

Gives Public Look At Achievements - In Strange World

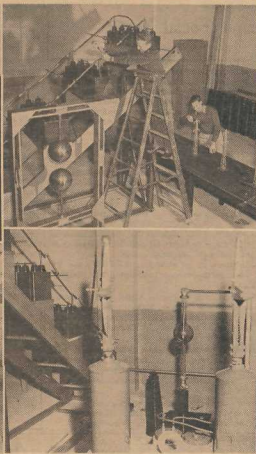
Reviving a tradition dormant since the war, the engineers of Duke University will offer their seventeenth Annual Engineering Exhibition in the engineering building tonight and tomorrow. Open to the students and any of the interested public, the show will afford a look into the fascinating world in which engineers live, work, and play.

Highlights of the show will be the surge generator designed by Professor Charles R. Vail, and built by six electrical engineering students of the College of Engineering, and the first public exhibit of television in North Carolina.

A television screen has been loaned to the engineers by a radio service store in town. Engineers will install an antenna



Continued From Page 1 and Jimmy Whaley



Engineering students demonstrate some of the laboratory equipment which is the feature attraction of the seventeenth annual Engineers' Show, now in progress in their West Campus building. Top row, at left: Henry Cranford tests his sensitivity on the EE's "Sex Meter"; in the center: Ed Fox and Harold Jackson prepare to test a model transmission line on Prof. Charles R. Vail's 100-000-volt lightning surge generator; right: mechanical engineering students run a test on a laboratory air compressor. On the bottom row, left: dynamometer tests are run on a steam reciprocating engine and turbine; right: a view of the surge generator's recycler (note looking through parts of the voltage-raising transformer).

and expect to receive pictures and sound on a ten-inch screen. Station WTVR, Richmond, will transmit. The station is sixty

miles out of normal television range. Under the direction of Bob Hazel and Ed Larner, the civil engineers will display their model of the proposed Durham highway bypass. This scale model will include the elaborate approaches, bridges, and clover-

leaf intersections which are part of the bypass system. Also displayed by the CE's will be the 150-ton compression machine which splits concrete blocks into splinters.

The entire show is under the direction of Joe Robnett, while Tom Lashaw is in charge of publicity. Chairmen of the individual departments of the show are Bruce Parker; Jack Harper, and Fred Goodman for the electrical engineers; Jack Freese and Murray Hutton for the mechanical engineers; with Bob Hazel and Ed Larner heading the civil engineering group. During the entire show, the University's ham station, WAHY, will be in operation.

QUADRANGLE PICTURES

TOMORROW
Walt Disney's
"Song of the South"
In Technicolor
Also Cartoons
Special Matinee at 3:00 P.M.

WEDNESDAY
First Durham Showing
"The Fugitive"
With
Henry Fonda
Delores Del Rio
J. Carroll Nash
Leo Carrillo
Special price this performance
40c (Tax included)

Shows at 7 and 9
Admission 9c and 30c

UPTOWN

Friday & Saturday
"SWING YOUR PARTNER"
With
Doris Delvera Vane
"PRAIRIE CHICKENS"
With
Jimmy Rogers
Nash Berry, Jr.
SUN.-MON.-TUES.
"BLOOD ON THE MOON"
With
Robert Mitchell
WED.-THUR.
"THE BIG CLOCK"
With
Ray Milland
"RENEGADE TRAIL"
With
Bill Boyd

Send The Chronicle Home

Chapel Hill Invites You for the Best

IN
Domestic and Imported Beverages
The Finest Chicken in the Basket
And a Jolly Good Time

AT THE
Ramshead Rathskeller

Postpone Bridge Party
Originally scheduled for April 14, the Durham County Alumni Association's benefit bridge party has been postponed until April 21. It will be held in the Woman's College gymnasium at 7:30 p.m.

Criterion Theatre

Friday & Saturday
Alan Lane in
"BANDITS OF DARK CANYON"
plus Jimmy Dorsey in
"MUSIC MAN"

Sunday, Monday, Tuesday
"FIGHTER SQUADRON"
In Technicolor
starring Robert Stack

Wednesday & Thursday
Lana Turner and Gene Kelly
in
"THREE MUSKETEERS"

OUR FOOD IS COOKED TO PERFECTION



- BARBECUE
- BRUNSWICK STEW
- FRIED CHICKEN
- SIZZLING STEAK

Let Us Prepare Your Cabin Party Food

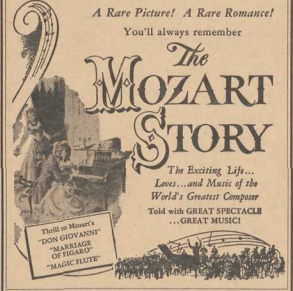
The Little Acorn RESTAURANT
700 Ribbes Ave.

ASTOR
DURHAM, N. C.

SOUTHERN PREMIERE

Sun. Thru Thur. - April 17 to 21

A Rare Picture! A Rare Romance!
You'll always remember



The MOZART STORY
The Exciting Life...
Lovers...and Music of the
World's Greatest Composer
Told with GREAT SPECTACLE
...GREAT MUSIC!

Like cream hair tonics? Here's the cream of them all!

contains Vitolol

new formula with VITOLOL works wonders in the looks of your hair. It looks natural... it feels natural... and it stays in place! Try a bottle.

*This special compound gives better... keeps hair in place without stiffness.

gives your hair that just-combed look...all day long!

new Vaseline cream hair tonic

AT YOUR FAVORITE THEATRE! CENTER

Last Times Saturday, April 16th
"SOUTH OF SAINT LOUIS"
Joel McCrea-Alexis Smith-Zachary Scott
Color by Technicolor

Sun.-Mon.-Tues., April 17-18-19
"MY DREAM IS YOURS"
Doris Day-Jack Carson-Lee Bowman
Color by Technicolor

Wed.-Thur.-Fri.-Sat., April 20-21-22-23
Bing Crosby-Rhonda Fleming
"A CONNECTICUT YANKEE"
Color by Technicolor

CAROLINA

Last Times Saturday, April 16th
Tyne Power-Dorothy Lamour
"JOHNNY APOLLO"

Sunday Only, April 17th
On the Stage-In Person
"HORACE HEDD'S NEW STARS"

Starting Monday, April 18th
John Payne-Gail Russell
"EL PASO"
In Color

RIALTO

Last Times Saturday, April 16th
Gene Ayler
"THE STRAWBERRY ROAN"
In Color

Sun.-Mon., April 17-18
Joel McCrea-Alexis Smith
"SOUTH OF SAINT LOUIS"

Tuesday, April 19th
Wild Bill Elliott
"EARLY ARIZONA"



Mother Always Remembers!

This year remember her on Mother's Day (May 8th). Your portrait will be her most cherished gift.

CALL US NOW FOR AN APPOINTMENT

jack williams

PHOTOGRAPHER

334 W. Main at 5 Points

F-0181

Smoke a LUCKY To feel your LEVEL best!

Luckies' fine tobacco picks you up when you're low... calms you down when you're tense—puts you on the lucky level! That's why it's so important to remember that LUCKY STRIKE MEANS FINE TOBACCO

—mild, ripe, light tobacco. No wonder more independent tobacco experts—auctioneers, buyers and warehousemen—smoke Luckies regularly than the next two leading brands combined! Get a carton of Luckies today!

L.S./M.F.T. - Lucky Strike Means Fine Tobacco

So round, so firm, so fully packed — so free and easy on the draw

© 1949, THE AMERICAN TOBACCO COMPANY

The Duke Chronicle Sports

by Bob Gibson

Here And There

Congratulations to Louis Allen, recently elected captain of the 1949 Blue Devil football team, a richly deserved honor for a fine athlete and a "last ditch" competitor. This is not only a testimonial respect, but also a personal triumph for the Greensboro boy. A year ago, papers in this section of the country carried word that the Duke might lose a great football player, a potential all-American, through the eligibility crisis, but Lou crashed through to throw this criticism for a loss.

And speaking of football, Duke plans to come up with several yearlings who may be surprised regulars come fall. Three ends feature this crew as Blaine Eason, A. B. Pearson, and Chick Adams have pushed the starters to the point where the pig pelt rarely touches the ground. The letterman flankers have to hold onto the ball to throw their positions. . . . Glenn Wild is the chief chatter as Wilmington's Jim Gibson blocks for him. . . . Bill Schrider, George Grant, and George Egan are others to note.

One of the best freshman athletes to enroll here in time is Dick Grant, outstanding basketball guard on the Blue Imp five last winter and also a star shortstop on the Herchel Caldwell's crew. . . . Fellow basketballer Dick Crowder, a weightlifter on the cross track team. . . . Frank Nanta, discus entry on the same club, is also a brother of a former Duke footballer, "Dippy" Nanta who was an outstanding lineman on Wake coached teams during the late thirties.

The freshman lacrosse team seems get to step in for their big brothers in years to come. . . . last week, the yearling stickmen dropped Carolina in their first match. . . . The varsity marked their first loss last Wednesday at Aampolis where a hot Middle Tennessee banged in 13 tallies to 7 for the Devils. This puts quite a damper on Blue Devil championship hopes.

Gridiron prospects for the next few years are looking up. Seems the procurement division is looking up a few fallaways as several top schoolboy stars in North Carolina are slated for DUA. . . . On May 7, the D club will sponsor its first annual "D Day" when they will entertain topflight gridiron talent from surrounding states here at Duke, including on the program is the Duke-State basketball game, the Duke-Johns Hopkins lacrosse game, and a barbeque-informal dance affair afterwards.

Typing, Mimeographing, Multilithing and Multigraphing
PROMPT SERVICE

Secretarial Service Company
714 Depositors National Bank Bldg. Tel. 9-2642

OLDEST - LARGEST - BEST
IN DURHAM
Cheek Dry Cleaners
720 Ninth St. Phone X-1227
Between East and West Campus
On 9th St.
"Evening Gowns Our Specialty"

Two things every college man should know!

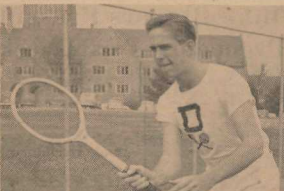


1. This is a Fraternity Brother.
Always happy to paddle other people's canoe. Spends days in haze. College is mostly Greek to him. Rules . . . for a "Manhattan" Fraternity Sportshirt.



2. This is a "Manhattan" Fraternity Sportshirt. Properly lined with authentic Fraternity insignia and pins. Also gets straight "A's" for smart tailoring and easy fit. In unadorned cotton-wool mixture. Choice of exclusive "Manhattan" colors.

CAMPUS FAVORITE
Manhattan
THE MANHATTAN SHIRT COMPANY
Cape Fear, N.C. 28404



The action pictured above is Le McManis, a junior from St. Petersburg, Fla. One of the co-captains of the Blue Devil football team this year. Lewis is ill at the beginning of the season and dropped his first match to Yale last week. McManis will be one of Duke's big guns in its match with Georgia Tech here tomorrow afternoon.

Blue Devil Track Squad Meets William and Mary Tribe Tomorrow

Duke's varsity track squad, inactive for an entire week after last Saturday's loss to Navy, will meet a crew from William and Mary tomorrow afternoon at 1:15 in Duke Stadium. The events of the dual meet will be alternated with those of the Duke-Durham Relays which also takes place tomorrow afternoon.

Assistant Coach Red Lewis said that Duke's chances are very good. The Devil's lineup will live in Tommy Reeves in the hurdles events and the broad jump. Jim O'Leary in the shot and discus, Bob Bowles and Johnny Colvin in the pole vault and Leren Young in the 220. Rod Griggs in the 440, Henry Bullock in the half mile, Johnny Elsworth (mile), and Bob Marshall (two mile) are also expected to give good performances.

The frosh tracksters met the Durham High School team Monday and came through with a 65-51-17 win. Outstanding performers for the Blue Imp were Frank Nichols, Henry Posa, and Keith McDonald.

Nichols won the pole vault and the high jump, took second in the broad jump, and thirds in the 100 and high hurdles. Posa took first in the 100 yard dash, the 220, and the broad jump. McDonald won both hurdles, doing excellent 15.2 in the high. Bob Byrd high school state champ in the mile for the last three years, was the high point man for the meet with 16 points. He won the mile, the discus, and the javelin and was third in the shotput.

The freshmen run against the State College yearlings in a meet at Raleigh on Monday.

Rare Opportunity STUDY . . . TRAVEL IN SPAIN
Castilian Group Andalusi-Group Basque-Catalan Group
65 Days . . . \$75.90
Departures June 25 to July 2
Sponsored by UNIVERSITY OF MARIETTA
For Descriptive Folder Write: STUDENT TRAVELERS 500 Fifth Ave., N. Y. 15, N. Y.



POWER TO SERVE

I'll furnish the electric power. You furnish the greatest power of all—Human character and brains. Together we'll make the Piedmont Carolinas the best place on earth in which to live and work.

DUKE POWER COMPANY
Serving the Piedmont Carolinas

Rain Hampers Frosh After Little Deacs Nip Duke In Opener

Two freshman baseball games were rained out this week. Both the Durham High game scheduled for Tuesday and the N. C. State contest slated for Wednesday were postponed by Old Man Weather. The non-regulation game was rescheduled for Coach Herchel Caldwell's squad is at home with Wake Forest on April 23.

Opening day pitching trouble was the main cause for the Little Devils dropping their first game of the season Saturday to a strong Wake Forest aggregation, 8-3. Duke pitchers gave up six hits and thirteen walks as against five bases on balls and six hits which Duke garnered from Wake Forest hurler.

Joe Peterson, a southpaw, started on the mound for Duke, but was relieved after the second inning by Bill Joyce, another lefty, who in turn was relieved by Dick Davis in the fourth. Duke lost the game in the eighth, Bill Ward finished the game.

Joe Lyons showed the way for Duke hitters by blasting both a single and a triple for two of his team's six hits. Doxy Myers also connected for a three batter.

Louis Allen Is Named '49 Football Captain

Last Monday night, following the annual Spring Football banquet in the Union Ballroom, Louis E. Allen of Greensboro, N. C., was elected captain of the 1949 Blue Devil football team. This yearling year will be his fourth season of play under head coach Wallace Wade.

Allen entered Duke in the fall of 1946 after serving three years in the Navy. Prior to that time, he was an all-State school-boy tackle under Bob Jamerson at Senior High in Greensboro. In his senior year, the Whitlins won the state championship and played Miami High in Florida for the Southern Title.

Allen represented Wallace Wade in August of '46 and immediately caught the coaches' eyes as the top prospect in his position. The lanky six-footer teamed with all-American Al DeRosatis to make the Duke tackle duo a feared defense for enemy threats. Duke did rather poorly that year, but Allen and DeRosatis both were mentioned in many post-season dispatches.

In the fall of '47 while DeRosatis was nursing injuries, Bill Low shouldered the tackle duties and proved his ability by playing 140 college games. Last year, the two made it a dual

Baseballers Meet Terps In Conference Test Here

By Jim Bessos
Coach Jack Coombs will probably send sophomore right-hander Al Curtis to the mound tomorrow afternoon when his unpredictable Blue Devils face Maryland's Terps at 4 o'clock in the Duke ballpark.

The past week has been packed with action for the Duke, with contents being reeled off against State on Wednesday and Thursday of South Carolina on Thursday and Friday. The Gamecocks were leading the Southern Conference when they took the field Thursday, holding two previous decisions over Duke among their loop conquests.

Several untimely errors and bad breaks cost the Blue Devils the State game, Curtis, Graham, and Benfer chunked for the losses, which outhrew the Wake pack by gathering 14 base knocks. Clower and Sires led the hitting, getting four and three hits respectively. One of the outstanding features of the team thus far has been the phenomenal hitting of John "The Rock" Rowder, who in his 17 trips to the plate has collected 14 singles. Five of his blows have been for extra bases.

Sire's blows was a home run over the leftfield fence. Curtis, who also drew the opening assignment in the Wake Forest game, was out of the Devil line-up for several weeks because of a shoulder injury that seemed to hamper his follow-through. Now his woes seem to have disappeared, and the big South Carolina native, with a little more work, should be able to hunt as often as last season, when during one stretch he opened in seven straight contests.

The Duke mentor used Freshman vet Roger Davis last week to pitch the Williams and Mary game. Davis, although being labeled the losing pitcher as the Blue and White's defense fell apart, displayed a good fastball and kept the Indian yearlings subdued for most of the fracas. If the freshman continues to improve, he may be a partial answer to some of Coombs' pitching worries.

One of the outstanding features of the team thus far has been the phenomenal hitting of John "The Rock" Rowder, who in his 17 trips to the plate has collected 14 singles. Five of his blows have been for extra bases.

Intramural Softball League Begins Play

Intramural softball schedule for next week Monday, April 18 at 3:45 p.m.:

- 1 The A Chl vs. Divinity School
- 2 Beta (A) vs. SAE (A)
- 3 Delta (A) vs. SAE (B)
- 4 Psi K Alpha vs. ZBT
- 5 KA (D) vs. Kappa Sig (B) Tuesday, April 19 at 3:45 p.m.
- 1 ATO (B) vs. S.O.B.
- 2 Delta Sig vs. SVP
- 3 Sigma Chi (A) vs. Phi Delta (A)
- 4 KA (B) vs. ATO (A)
- 5 Sigma Chi (B) vs. Phi Delta (B) Wednesday, April 20 at 3:45 p.m.
- 1 Sigma Xi vs. Sigma Chi (C)
- 2 Phi Delta (C) vs. Psi Phi
- 3 Phi K Sig vs. Phi Delta (D)
- 4 Delta (A) vs. Sigma Chi (A)
- 5 Beta (A) vs. KA (B)

Watches Diamonds Jewelry
HOPPER'S
EXPERT WATCH REPAIRS
217 W. Main St.

SURPLUS SALES
425 W. Main Street
ARMY TYPE KHAKI PANTS (Wonderful for School)
NAVY TYPE CHINO GREY PANTS (Washable—For Lounging or Play)
PAIR \$3.45

The Howard
Guest House • Open All Year
College Parties A Specialty
Reasonable But Unexcelled
RELAXATION—REFRESHMENTS—MEALS
SHUFFLEBOARD—SWIMMING
NELLIE G. HOWARD
Oceanfront: 930 North Ocean Boulevard
Myrtle Beach, South Carolina

Contact: Jack Ray House O, Room 101-R

CHILL HOUSE

Duke Students Always Welcome
"FOOD AND SERVICE AT ITS BEST"
YOUR PATRONAGE APPRECIATED

How much FUN can you cram into a record?

Hear Ray McKinley's musical kidding in "SUNFLOWER" (see RCA Victor Release) and you'll know!

You'll have a lot of fun with Ray McKinley, his band and his vocalists serving up a platterful of "corn" for your listening and dancing pleasure. You'll Ray knows about musical pleasure—and smoking pleasure, too! As Ray beats it out on his drums— "Canals are a great cigarette—they're mild and full-flavored!"

How MILD can a cigarette be?

Smoke Camels for 30 days—and you'll know! In a recent coast-to-coast test of hundreds of men and women who smoked only Camels for 30 days—an average of one to two packs a day—noted throat specialists, after making weekly examinations, reported

NOT ONE SINGLE CASE OF THROAT IRRITATION DUE TO SMOKING



