

# The Duke Chronicle

Volume 54, Number 14

Duke University, Durham, N. C.

Monday, October 13, 1958

## Committee Rules

### Beta Charges Minor; Maximum Fine Levied

Last night IFC's executive committee ruled that both charges brought against Beta Theta Pi Fraternity were minor violations following an hour-long discussion.

For the violation of being on East Campus after hours the committee set a fine of \$30. The six-member committee levied a penalty of \$50 for the violation of rowdiness on East Campus, IFC president Chuck Yengst reported.

The Betas have the privilege of deciding whether they will accept the penalties, stated Yengst. If they decide to reject them, they have the right to appeal their case before the entire Council when it convenes tomorrow night.

According to Yengst the rowdiness charge dominated most of the discussion. "We were very close to deciding that it was a major violation, but after deciding it was minor the committee agreed to give them the maximum penalty allowed by the constitution," he added.

During the discussion all reports submitted from East Campus dorm counselors were read and discussed, but they were "considered as a whole," Yengst emphasized. No one report submitted testimony that would determine a decision by the committee.

### 560 Freshman Men Buy 'Y' Memberships

Of the 713 freshmen in the class of '62, 560 have bought YMCA memberships to date.

The 78.5 per cent who bought memberships contributed \$2,997.50—\$53 over the planned budget for the coming year, Ken Walz, treasurer of the YMCA, said.

The drive, falling short of the 90 per cent goal, releases Don Penny and Ken Walz from their agreement to wear traditional freshman dinks.

Last year 86.4 per cent of the 650 freshmen joined. However, 'Y' memberships will continue to be sold throughout the year by the 'Y' executive council members.

## Symposium Space

### New Office of Ordinance Research Building Opening Date Planned for Late November

The new Office of Ordinance Research building will open late in November or early December, according to Colonel George Leist, director of the office.

A definite opening date will depend upon the finishing of interior painting and completing of the parking lot, he said. The new structure is located behind the Engineering building.

Leist also stated that the new building will have three definite advantages over the old: conference and symposium rooms; separate offices for top scientists and more usable office space for other workers; and central heating and air conditioning.

University scientists and engineers will occupy one wing of the new building for the purpose of working on related projects such as the "math complex."

Drs. Murray of Columbia, Dussin of Carnegie Institute, Rhinehart of Case, and Bryson of Iowa University will be working with Dr. Gergen, head of the University math department, on this "complex," which is designed to help the Army solve problems in logistics and missiles.

"This is symbolic of the tremendous cooperation and co-ordination displayed by Duke University toward the U.S. Army Ordinance," Leist commented.

## New York Cast To Star Here Tomorrow Night in 'Candide'



ROUNESVILLE

PETINA

Leonard Bernstein's musical version of Voltaire's *Candide* stops on its nation-wide tour tomorrow for an 8:15 p. m. performance in Page Auditorium.

Starring actor Robert Rounesville and Metropolitan Opera star Irina Petina the musical was termed "brilliant" by *New York Times* critic Brooks Atkinson.

Tickets for the show, which is being sponsored by the Major Attractions committee of the Student Union, will be on sale at the Page Auditorium box office. Prices are \$2.50, \$2, and \$1.50 for students and faculty, and 50 cents more for others.

The musical received wide acclaim from New York drama critics and was the only production that sold out at the Bucks County Playhouse this summer. The *New York Journal American* said the musical was "brilliant and loaded with talent," and the *New York Times* called it "a work of genius."

Voltaire's famed wit is accentuated in the play by the writer, Lillian Hellman, and *Variety* describes it as "opulent, racy, lavish and gay."

In addition to Rounesville and Petina other stars are Martyn Green, who is called "excellent" by the *New York Post*, Mary Costa, and Lee Bergere.

### Leaders of State Student Legislature Seek Use of Capitol Building in Raleigh

The North Carolina State Student Legislative Assembly Council, the assembly's governing body, which met yesterday at UNC, is seeking the reservation of the state Capitol in Raleigh for December 11-13.

President Bob Denise of Duke told the council he had contacted the Governor's office concerning the use of the building and had been told that the request would be given "due consideration."

The only organization of its kind, the assembly has gathered at the capitol as a mock legislature for the past 21 years and has been integrated for 11 years. Approximately 22 colleges in the state are represented.

Governor Luther Hodges threatened last fall to exclude the assembly from use of the Capitol. The threat came on the heels of a denunciation by Rep. Harold Cooley of the assembly's action in passing a resolution advocating that all states' laws in prohibition of intermarriage be repealed.

Council members from State College have offered to act as hosts to the assembly if the Cap-

itol is not available.

Duke was represented at the meeting by Dick Weed, Polly Akin and Belden Randolph, with Denise presiding.

## Study Abroad

### Committee Certifies Eight For State Rhodes Contests

Eight students have been certified by the University Rhodes Scholarship Committee as eligible for state competition for Rhodes Scholarships on December 17.

Four of these — Don Fry, George Hudson, Mike Malone and Karl Stump — will compete in North Carolina. The others will compete in their home states: Julian Jurgensmeyer from West Virginia, Karl Straub from Kentucky, Charles Thompson from Texas, and Dick Wood from Michigan.

Two students from each state will compete in a district composed of six states.

Cecil Rhodes laid down in his will the qualities on which selection of Rhodes Scholars is based: literary and scholastic ability and attainments; quali-

ties of manhood, truthfulness, courage, devotion to duty, sympathy, kindness, unselfishness and fellowship; exhibition of moral force of character and of instincts to lead and to take an interest in his fellows; and physical vigor, as shown by fondness for and success in sports.

### Hanes House Elects Freshman Officers

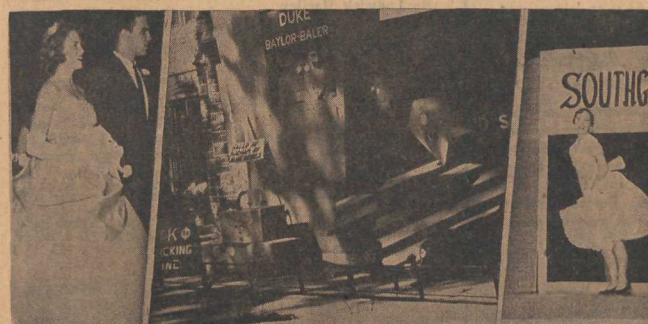
Sally Leech from Scarsdale, New York, was elected president of the freshman class of Hanes House in elections held at the end of last week.

Other newly-elected officers are vice-president Janette Dill, Devon, Pennsylvania; secretary Carol Caton, Racine, Wisconsin; and treasurer Marianna Sherman, Seaford, Delaware.

Elected to become members of Honor Council were Bonnie Buff, Richmond, Virginia; Lee Rous, Baltimore, Maryland; and Ann Colerose, Durham, N.C. Nancy Espenshade from Manassas, Virginia, was chosen as Judicial Board representative.

Also selected as freshmen representatives to the Social Standards Committee were Peggy Taylor, Caldwell, New Jersey; and Patricia Drewry, Alexandria, Virginia. Kay Hart from Charlotte, N.C., will be social chairman.

The first meeting of the new officers will be Thursday night at 8.



Pretty coeds gave Homecoming a good start with their skits Friday night at the Homecoming Show, and the crowning of cheerleader Sue Hancock as Queen climaxed the night. The whole weekend became a success Saturday afternoon when the Blue Devils

followed a display prize-winning suggestion by Pi Kappa Phi and baled up the Baylor Bears, packing them up to send home to Texas with the short end of a 12-7 score.

Photos by Carl Krupp

### Script Worth \$100

A \$100 prize will be awarded to the author of the script selected for the 1959 Hoof 'n' Horn show.

The deadline for submitting scripts is October 22. All interested playwrights should submit scripts to Linton Brooks in Y-302 or to Margi Linsert in Brown House. Scripts should be as complete as possible, but need not include words or music for songs. Typewritten scripts are preferred, though not required.

Final script selection for the show will be made October 29.

# The Duke Chronicle

FOUNDED IN 1905

The Tower of Campus Thought and Action

Published every Monday, Wednesday, and Friday of the University year by the students of Duke University, Durham, North Carolina. Entered as second class matter at the Post Office at Durham, N. C., under the Act of March 3, 1879. Delivered by mail, \$5.00 for the University year, \$1.50 per semester, cost of postage to enrolled undergraduates not in residence on the campus. Subscriptions should be mailed to Box 4696, Duke Station.

STEVEN L. HAMMER  
EditorCRAIG D. CHOATE  
Business Manager

## Facts On Integration

The October issue of *Southern School News* reports several helpful facts concerning the progress of integration in Southern schools, and they are printed here as a guide to student thinking on the matter. We can't say that the figures are entirely valid, but since *Southern School News* is generally considered the most reputable and objective reporter of events in the integration crisis the room for error is small. The figures shown were for enrollments as of September, 1958. Figures under "Integrated Situations" mean the number of Negroes in districts which have been or intend to be partially integrated.

### ESTIMATES OF ENROLLMENT DESEGREGATION FIGURES, 1958

State	Total	School Districts		Estimated Enrollments	Negroes in Integrated Situations
		Bi-Racial	Deseg.		
Alabama	111	111	0	491,400	288,600 37.0*
Arkansas	423	228	8	316,441*	103,330* 24.6*
Delaware	97	61	17	59,000	14,000 19.0 5.145*
D. C.	67	1	1	29,737	83,763 73.8 85.765
Florida	67	67	0	707,800*	196,300* 21.8*
Georgia	200	196	0	685,515	307,985 31.0 0
Kentucky	215	171	117	560,000	40,000 6.6 23.934
Louisiana	67	67	0	480,000	240,000 37.5*
Maryland	24	23	21	422,007	114,898 21.4* 112,698
Mississippi	151	151	0	276,326	268,905 49.3 0
Missouri	3,600	244	211	708,300	78,700 10.0* 74.136
North Carolina	172	172	3	749,000	314,000 29.8* 24,000*
Oklahoma	1,469	271	238	507,000	35,000 6.4* 25,843
South Carolina	107	107	0	339,150	255,850 43.0 0
Tennessee	152	141	3	652,240	137,460 17.4 1,700
Texas	1,650	722	124	1,692,615	262,810 13.4 25,000
Virginia	114	114	0	623,935	203,565 24.6*
West Virginia	55	43	47	441,324	25,078 5.4* 25,078
TOTALS	8,675	2,890	790	9,658,090	2,970,344 23.5 402,403

\*1957-58 Figures

The publication also reports that 13 schools with student populations of nearly 16,000 are now closed in four Southern cities to avoid federal integration orders. Four schools are closed in Little Rock, six in Norfolk, two in Charlottesville, and one in Front Royal, Virginia.

## New Definition Of Organized Function Given

For some time now there has been considerable contention over the Administration's definition of an organized social function. No one has known just when their party or student gathering was subject to the restrictions on "organized" functions. Last week the group of deans and students that have been discussing the drinking situation on campus arrived at this following definition of an "organized function."

"An organized function is one at which the expense, or part thereof, is either paid from the organization treasury or shared among the group by collection of fees, or a function of a private nature which has been planned in advance, and about which the members of a group are notified."

This is the "official" definition that will now be used by student organizations and the Administration.

## Tower Talk

It was with great joy that we witnessed old grad Lew Marvin's cheerleading antics at the homecoming show and football game this past weekend. Lew was perhaps the best cheerleader that Duke has ever had, and we wish that there were someone now that had the imagination and ability to produce such ear-ringing yells as "Metafusa" and others.

May the Pep Board take Lew's performance as evidence that with the proper enthusiasm and direction from "down front" Duke students will yell like—



A bulky crew-neck pullover with a difference...

TOWNE AND KING

New features are packed into this good-looking crew-neck pullover by Towne and King, to give it bulk without shagginess, and an air of exclusiveness in styling. Virgin wool; half-cardigan stitch; semi-fashioned raglan sleeves; 36-46... 12.95



## Windy Windley

## IN and OUT At Duke

By CARLYLE WINDLEY

Like it or not, every student, professor and employee of this University is either IN or OUT. Furthermore, all their tastes, thoughts, and actions are either IN or OUT.

To clarify this statement I refer you to an article entitled, "Son of IN and OUT" by Robert Benton and Harvey Schmidt. "Esquire" October, 1958.

"A thing can be IN for three reasons: a. Because it is so classic and great. Example: The Fox Trot. b. Because it is so obscure. Example: Chinese Checkers. c. Because it is so far OUT even the OUT people won't touch it. Example: Hawaii (So OUT it's IN) Some OUT people try to get IN by saying they like IN things but since OUT people can never be IN, they can only manage to screw up some good IN things."



(One added bit of explanation—what ain't IN is OUT.)

Using the above criteria we can immediately see that Dean Cox and Ralph, the shoeshine man, are IN. In the same token, so is Nermie (so far OUT he's IN.) Snake cults are OUT according to Dr. LaBarre, who's IN, and Billy Graham is fading fast.

The Betas are IN and the Judi Board pulls a draw for the present. There is OUT and Torray is IN. Sneakers are OUT and "little abners" are IN as are long haircuts for men and pledge pins. Drinking is definitely OUT but so is Ezra Pound.

East Campus is IN but only if you have the proper attitude. I've been told that Watts is IN forever. Red carnations are IN although no one seems to know why. Nature Boy is OUT and so is Tom Farrell. The OOC is IN for good. All campus dogs and cats are IN but tourists are OUT.

And last but not least, the Chronicle is IN but this is an OUT column written by an OUT person who enjoys being OUT cause he can't get IN.

## You Can't Beat

## NORTH CAROLINA AUTHORS

By Frances Gray Patton

A Piece of Luck—fine collection of short stories by U.N.C.'s own author of "Good Morning Miss Dove."

Our Special .....\$1.00

By James Street

Captain Little Ax—a honey of a Civil War novel.

Our Special .....\$1.00

By Kemp Plummer Battle

Memories of an Old-Time Tar-Heel. By U.N.C.'s president in Civil War times.

Our Special .....\$1.00

By Manly Wade Wellman

Flag on the Levee—Historical novel for boys, by a favorite Chapel Hill author.

Our Special .....\$1.25

By Lodwick Martley

This is Lorence—A scandalous book about Laurence Sterne, by the N.C. State professor.

Our Special .....\$1.25

By Elizabeth Boatwright

Coker

The Big Drum—A lusty, busy novel of early Charleston, by a lady shared and loved by both Carolinas.

Our Special .....\$1.00

By Joseph C. Robert

The Story of Tobacco in America—President of Coker College and former Duke luminary, Dr. Robert writes a lively Southern history.

Our Special .....\$2.98

By Jessie Rehder

Remembrance Way — The beautifully written story of a North Carolina girlhood, by a favorite member of the UNC faculty.

Our Special .....\$1.49

By William Meade Prince

The Southern Part of Heaven — The most popular book about Chapel Hill ever written. Most shops charge \$3.75.

Our Special .....\$1.98

By Phillips Russell Jefferson

Champion of the Free Mind. A timely, authentic volume, by a thoughtful Chapel Hillian.

Our Special .....\$2.98

By Archibald Henderson

George Bernard Shaw: Man of the Century. The masterwork of Chapel Hill's distinguished mathematician and biographer.

Our Special .....\$7.39

On Mail Orders please don't forget to add 3% N. C. Sales Tax.

AND YOU CAN'T BEAT THE FABULOUS PRICES AT

## THE INTIMATE BOOKSHOP

205 East Franklin St. — Chapel Hill — Open Till 10 P. M.

FREE CAR  
WASH



WITH EVERY  
OIL & GREASE  
JOB

STEVE'S SINCLAIR

(CHAPEL HILL ST. AND MILTON AVE. NEAR JACK RABBIT)

## THE ORIENTAL

CHINESE AND AMERICAN RESTAURANT

Orders To Take Out 116 East Parrish Street

OPEN MONDAY THRU SUNDAY 11:00-2:30, 4:30-9:40

## ★★ SPECIAL CLASSES ★★

Shorthand & Typing For

DUKE STUDENTS

Advanced Registration Required Begins Feb. 1959

KENNEDY'S

COMMERCIAL SCHOOL

1105 W. Main (Across from East Campus) Ph. 5-4221

## Dine and Dance

to the music of

## RICK VANCE

AND HIS ORCHESTRA

Box 9143

HH 212

NOW BOOKING FOR FALL AND SPRING

## Campus Calendar

### TOMORROW

Campus Club Tea; 3; University House.  
Concert Band Rehearsal; 4:30; Room 208 Asbury Building.  
Student National Education Association Meeting; 6:30; The Ark.  
AIEE Meeting; 7:30; Room 125, Engineering Building. Topic: "Computer Design and Programming."  
Medical Dames Meeting; 8; Mary O. Cowper Child Center.  
Baptist Student Union; 8; Music Room, East Duke Building.  
"Candle"; 8:15; Page Auditorium.

### WEDNESDAY

Divinity School Morning Chapel; 10:30; York Chapel.

Recommended by  
Duncan Hines . . .

# PIZZA

- Lasagna
- Rare Roast Beef
- Imported Beers

**The Rathskeller**  
A Landmark in Chapel Hill

**AUTHENTIC  
UNIVERSITY  
STYLES**

**BILLS  
MAILED  
HOME**

OR  
**STUDENT CHARGE  
ACCOUNTS**

Where Duke Men  
Shop With Confidence



**The Young  
Men's Shop**  
WEST MAIN ST.



**CAROLINA**

Now Showing . . .  
Gary Cooper  
in

"Man of the West"  
Cinemascope . . . Color  
co-starring Julie London

**CENTER**

Now Playing  
John Wayne  
in

"The Barbarian and  
the Geisha"

with

Eiko Ando - Sam Jaffe  
So Yamamura

Filed in Breath-Taking  
COLOR BY DE LUXE

In Enchanted Japan in Cinemascope



NOW PLAYING



## Cleave, Atkins, Powers Star in 'Twelfth Night'

The recently chosen cast of *Twelfth Night* began rehearsals in Branson today for its November performances.

Heading the cast are Carol Cleave as Viola, Tommy Atkins as Antonio and Lola Powers as Olivia. Larry Warner will play Malvolio and Cathy Carney is Maria.

The Elizabethan comedy, a Duke Players production, is being done with the backing of

the Shakespeare classes taught by Professor Williams and Professor Bowman. Student participation will fill the same requirements as papers and credit will be given according to the part.

This is the first entirely student-produced play done here and will be a walk-through with scripts. To maintain an Elizabethan atmosphere, the play will be done on a six-inch platform with no formal sets.

## VICKERS ELECTRONIC SUPPLY CO.

506 E. Main St.

Durham, N. C.

GENERAL ELECTRIC TUBES

HI-FI EQUIPMENT

SEMI-CONDUCTOR PRODUCTS

## Dean Emeritus Hall Wins Alumni Award

The first dean of the College of Engineering, William Holland Hall of Durham, became the third recipient of the University Engineering Alumni Award Saturday.

Now Dean Emeritus of the College, Hall was first appointed in 1939, serving as Engineering

Dean until 1953.

The award was presented to Hall by L. Russell Ranson of Charlotte, 1957 winner, during an Alumni Association business meeting at the College of Engineering. This meeting was one of the events of the College's annual Homecoming program.

**Duke Snyder's**

Fabulous

**JAZZ COMBO**

APPEARING

**THIS TUESDAY NIGHT**

**DROP BY  
AND  
SEE US!**

at

**—OPEN—**  
WEEKDAYS 3:30-12:00  
SATURDAY 12:00-12:00

**das GASTHAUS**

(Basement Cole's Restaurant — Duke Univ. Rd.)



## exploring for a better world

**AT THE FOUR CORNERS OF THE EARTH**, more than 5000 scientists from 67 countries are joined in an all-out assault on the vast gaps in our knowledge of the universe. In, on and above the earth, studies are underway to learn more about how we can make better use of the planet we call home.

**A. ENIWETOK, SOUTH PACIFIC.** Four dozen tiny Texas Instruments components (diodes and transistors) rode more than 4000 miles out into space in Operation Farside.

**B. NORTH POLE, ARCTIC.** *recti/riters*, TI ink-writing rectilinear recording galvanometers, trace the flicker of the aurora borealis and measure the all-but-invisible polar airglow.

**C. SOUTH POLE, ANTARCTIC.** Texas Instruments seismic exploration systems plumb the depth of the polar ice cap . . . TI's famed Worden gravity meters weigh the earth beneath . . . *recti/riter* recorders warn scientific adventurers against deadly ice crevasses.

**D. CAPE CANAVERAL, FLORIDA.** TI transistors and diodes in the Jupiter C missile helped put the Explorers on their journeys . . . and United States satellites themselves use Texas Instruments transistors.

engineers, chemists, physicists . . . choose your future  
**SEMICONDUCTORS AND OTHER COMPONENTS.** Transistors, diodes, rectifiers, capacitors, resistors, transistor circuit

applications, test equipment, mechanization for the Semiconductor-Components division.

**ELECTRONIC AND ELECTROMECHANICAL APPARATUS.** Radar, infrared, sonar, magnetic detection; computers, timers, telemetering, intercom, optics, microwave systems; transformers, lenses for the Apparatus division.

**BASIC AND APPLIED RESEARCH.** MS and PhD level inquiring into data systems and earth sciences, solid state physics, materials, and devices; concentrating on semiconductors, electronic components and systems, military systems, data handling, geophysics at Central Research Laboratory.

**come and grow with us**

Hitch your wagon to the Texas Star . . . work at a plant within the city but away from downtown traffic . . . live within minutes of your work or your play—year around recreational, amusement and cultural activities. A Texas Instruments representative will be on the campus in a few days to give you more details. Please contact your placement office before—

**October 00.**



**TEXAS INSTRUMENTS  
INCORPORATED**  
6000 LEMON AVENUE • DALLAS 9, TEXAS

The Editor of Campus

Thought and Action

# The Duke Chronicle

SPORTS EDITOR: Art Santo-Domingo

## Blue Imps Romp To 49-0 Win Over Stunned UVA

Scoring five touchdowns in the last half the freshman football team soundly thrashed the Baby Cavaliers of the University of Virginia 49-0 in their season opener, Friday afternoon in Duke Stadium.

The Blue Imps demonstrated their superiority over their foes from Charlottesville in dazzling displays of both offensive and defensive might. Great offensive depth was shown by the Methodists as far as ends and halfbacks were concerned. The offense also shone under the generalship of two fine quarterback backs as well as a pair of hard-working fullbacks.

The entire line was outstanding on offense and defense, pro-

viding ready holes for the eager Imp backs and plugging them up for the downtrodden Virginians. The team piled up a total of 482 yards, 300 of them coming on the ground.

The seven touchdowns were scored by seven different men. Those players tallying were halfbacks Jack Withrow, Dean Wright, Gary Wilson, Bill Durham, Bobby Wyatt, and ends Ed Chestnut and Stan Preston.

The Imp's next action is on October 24 when they meet N. C. State's Wolflets in Raleigh.



**HAULING IT IN**—Doug Padgett makes the final stab to complete a third quarter pass from Bob Brodhead during the 12-7 win over Baylor Saturday.

Photos by Carl Krupp

## Frosh Basketball Drills To Start

All freshmen interested in trying out for the 1958-59 Blue Imp basketball team are to report to the Indoor Stadium Wednesday evening at 6:30 for the first drills. Physical Education attire will be needed.

Positions are open for anyone interested in becoming a basketball manager. All those interested should report to Gordon Johnson at the Indoor Stadium on Wednesday.

## Hard-hitting Line Play And Sharp Blocking Were Big Factors In Homecoming Victory

By ART SANTO DOMINGO  
Chronicle Sports Editor

Using the lonesome end merely as a decoy most of the afternoon, coach Bill Murray's Blue Devils turned back a fighting Baylor eleven, 12-7, for the second win of the campaign last Saturday before the Homecoming Day crowd in brilliant sunshine.

Only one or two new plays were unveiled this week in fighting off the Bears from the Southwest Conference to preserve Murray's perfect record against teams from that group. Dave Sime, the famous runner, now employed in a pass catching capacity by Duke, saw little action, disappointing the crowd, but the game was interesting for the fans anyway.

Part of the excitement was created by the constant fumbling on both sides. An errant pass from center also added to the sloppiness of the game and set up Baylor's lone TD in the third period after the Devils started off the second half with a 6-0 lead.

Baylor not only lost the ball several times, but repeatedly saw its players lose helmets in the hard-hitting line play that marked the game. Several of the loose headgear were caused by crushing blocks delivered by Duke linemen. Devil backs cleared paths around the ends for halfbacks Wray Carlton and George Butrow with sharp blocks that mowed down the ends and linebackers in green jerseys.

Murray remarked that he had been cognizant of the fine blocking, the best done by Duke this season.

Two passes, the only ones Duke failed to complete all afternoon, played a big hand in keeping the Blue Devils from scoring more than they did. The aerials were heart breakers that fell incomplete, both times near the goal line. The most painful one to the crowd came on a fourth down pass to Sime on the Baylor goal line which kept the Dukes away from a second TD in the first half.

Duke's next foe will also be wearing green—Irish green.

## In Overtime Period

## Blumen Nip Davidson Wildcats For First Victory Of Season

By BILL DIXON

After bouncing back to even their record at 1-1, coach Jim Blye's Blue Devil soccer team returns home to face a tough Washington and Lee club tomorrow on Freshman Field, starting at 3:30 p.m.

The Generals have practically their whole starting lineup back from last year when they downed the Devils by a 2-1 count.

Blye urges the student body to turn out and watch the hustling booters and give the team some support.

Last Friday the Duke club took the measure of Davidson's Wildcats, 3-2, in a thrilling overtime match on the losers field. After ending the regulation contest in a 2-2 tie, the Devils made it their win when center forward Irv Brooks shot one into the Wildcat net. Brooks had previously tallied in the regular game, and right wing Gunner Schull was the other scorer for Duke.

Blye thought his club played well, but was of the opinion that Duke was out-hustled by a fired up Davidson squad in the earlier part of the game. However, the Big Blue had enough to win in the overtime.

**HEY, DON'T PINCH ME!**—Unidentified Baylor runner is brought to a halt by Blue Devils Bunny Bell (left), Jim Bartal (center), and Andy Cottingham, but not without a struggle. Photo by Tom Gnuse

## Varsity, Freshman Runners Rack Wins

By MORRIS WILLIAMS

Running powerfully as expected, the Duke harriers won their second straight victory Friday at Raleigh as they defeated North Carolina State and Wake Forest in the first triangular meet of the year, 29-36-58, respectively.

Led by Jerry Nourse, who finished first for the second straight time, the Al Buchler-coached team swept five of the first ten places in the meet. Tom Maloof, a junior, finished fourth, followed closely by Tom Bazemore in sixth place. David Honeycutt, who finished eighth, and Fred Hurd rounded out the first ten.

Running on a firm 4.1 mile course in hot and humid weather, the winning time complied by Nourse, a sophomore, was 22:41.7 minutes.

While their big brothers were winning, the freshman team was winning a stunning victory of its own from the same two schools.

Paced by the performances of Page Naugle and Barry Howe, who finished first and second, the Blue Imps took eight of the first eleven places.

The final triangular meet score was Duke-21, Wake Forest-57, and State-62.

One Miserable  
Dollar  
Will Buy  
A Wonderful  
New Book  
At The

INTIMATE  
BOOKSHOP

205 E. Franklin Street  
Chapel Hill

Open Till 10 P.M.

WE ARE STILL IMPROVING  
WITH AGE

Over 24 Years

IN THE SAME LOCATION

Laundry and Dry Cleaning

85c SUITS CLEANED AND PRESSED 85c

Southern Dry Cleaners  
& Laundry

756 Ninth Street

West Durham

## DON'T MISS IT!

ONE SHOW ONLY

Page Auditorium

Tomorrow Night, 8:15 P.M.



"Brilliant . . . Robert Rounseville and Iira Petina sing the chief parts gloriously"—Atkinson, N. Y. Times

"Lillian Hellman has fashioned a strong humorous Libretto"

"In a class by itself" . . . "A work of genius"—Chapman, N. Y. News

"Towers head and shoulders above most song and dancers"—Coleman, N. Y. Mirror

Tickets: \$2.00, \$2.50, \$3.00

Student and Faculty: \$1.50, \$2.00, \$2.50

ON SALE: PAGE BOX OFFICE,

OR PHONE EXT. 2584, 2:00-5:00 P.M.

A STUDENT UNION PRESENTATION