

# The Duke Chronicle

Volume 52, Number 4

Duke University, Durham, N. C.

Friday, September 28, 1956



The choice of Georgian beauty is pictured above, each selected by her house as candidate for homecoming queen.

The girls, front row, left to right, are: Peggy Paul, Bassett; Marilyn Green, Jarvis; Dot Felson, Aycock; Betsy Webb, Brown; second row, left to right: Ann Ellison, Southgate; Nancy Ware, Gilles; Susie Whitener, Alspaugh; Virginia Jessup, Hanes; and Ginny Brewer, Pegram. Not pictured: Barbara Wagner, Town Girl's nominee.

## East Houses Name Queen Candidates For Homecoming Weekend Celebration

### Dance Ends Program

The Duke Ambassadors will furnish the music for the annual homecoming dance Saturday night, Oct. 13, from 9-12 in the old West Campus Gymnasium.

Featured attraction at the dance will be the presentation and crowning of the Homecoming Queen during the intermission. The queen will be elected by West Campus students from a list of candidates chosen by East Campus, Hanes House, and Town Girls earlier this week.

Tickets for the dance, "Halls of Ivy Ball," will go on sale outside the stadium immediately after the Southern Methodist football game. Price of the tickets will be \$1.50 per couple. Returning alumni and students are invited to the dance.

Tentative plans are being made for the Ambassadors to present some of the acts they did on their recent tour during the intermission ceremonies.

Chairman of the dance is Joe Glass. Committee chairmen are Bill Tracy, Sandy Brockwell, Eddie Yost, Betsy Coker, Teddy Van Dyke, Mark Chessin, Gray Bryant, George Atkinson, and Mary Ann French.

### \*Dorms Select Best Beauties To Take Big Prize In West Campus Ballotting

Queen of Homecoming Week, end will be one of the ten candidates pictured above, chosen from their dormitories on the basis of their beauty and personality.

Nominated in house meetings Tuesday night, the senior women will be judged in a poll of West Campus Wednesday and Thursday, Oct. 3 and 4. The men are asked to consider personality as well as beauty this year.

Individual pictures will be placed in the arcade between House P and the Union Building, and votes for the queen will be taken from 11 a.m. to 1 p.m. and from 5-6 p.m. on those days.

To be crowned by football captain Buddy Bass at the Homecoming Show Friday, Oct. 12, the queen will preside over the Homecoming Dance the following evening. She will be presented formally with her court, made up of the other candidates, during the half-time show at the Duke-Southern Methodist football game Saturday, Oct. 13.

Chosen from each dormitory, Miss Whitener is from Alspaugh; Miss Felson, Aycock; Miss Paul, Bassett; Miss Webb, Brown; Miss Ware, Gilles; Miss Green, Jarvis; Miss Brewer, Pegram; Miss Ellison, Southgate; Miss Jessup, Hanes; and Miss Wagner, Town Girls.

### Y Sets Dad's Day

Dad's Day, sponsored annually by the YMCA, will be held this year on Friday, Nov. 9.

All undergraduate men are urged to extend an invitation to their dads. In addition to the Navy game, which will highlight the week-end, an interesting program will be conducted by the "Y", including a banquet.

Undergraduates may obtain further information about the weekend in the "Y" office, room 101 Flowers.

## Sorority Rush To Begin Oct. 1

Period To Commence With Open Houses; Quiet Period To Go Into Effect Oct. 15

By BATTLE RANKIN

Starting with assigned open houses, the sorority fall rushing program will begin on Monday night, Oct. 1.

The rush period will continue through Thursday, Oct. 18, concluding with formal invitational parties that night. Bids will be extended the next evening at 6 p.m.

During the first week of rush, each freshman will be assigned to attend open houses given by every sorority. Invitational open houses will be held on two nights the following week. Rushes may accept no more than six invitations to the first party and no more than five to the second. Also during this period, rushees will attend one voluntary assigned open house, selecting not more than six sororities to visit.

Quiet Week, during which no sorority women may visit or talk to a freshman, begins on Monday, Oct. 15, and will last until bids are extended. At this time, sorority members may not eat at the same table with the freshmen. However, a recent change in rush rules allows them to eat with the freshmen, regardless of the number of sororities represented, until the beginning of Quiet Week.

On Oct. 16 and 18, the formal parties will be held. Invitations will be issued on the night preceding the parties. By the second formal party, sororities can issue invitations to only one fourth of the number of women participating in the program.

Each sorority may pledge not more than eighteen freshmen and may pledge an unlimited number of transfer students, provided the chapter does not exceed its quota of sixty members.

Women who are not invited to pledge a sorority are eligible to be pledged after Nov. 2, 1956 provided they have gone through formal rush. Those who drop out of rush are eligible to be pledged after this only if they have attended the first formal party.



BUZZY BROWNE



BOB STUART

elected Jim Fulcomer as vice president of the organization to succeed Browne. Lindsey Farris was chosen as a member of the executive council.

Commenting on his resignation, Stuart said, "I don't have the time, due to a heavy schedule, to do an adequate job and I feel that someone else could spend more time on the valuable position." Stuart will continue to serve the club in an advisory capacity.

### Duke Players' Cast To Begin Work For First Presentation

Duke Players has tentatively selected ten students to complete the cast of its first production, *The Reclining Figure* by Harry Kurnitz.

The cast of the play to be presented in Page Auditorium on Nov. 1-2, are: John Adams, Fred Reginold, Mary Lou Coffer, Cliff Dyke, Robert Butts, Charles Carr, Gary Runmore, Ron Lovitt, George Autrey, and Lee Reaney. Rehearsals begin Monday, Oct. 1, at 7:30 p.m. in Branson Building on East Campus.

Two other productions, August Strindberg's *The Father* and George Bernard Shaw's *Mis Allance*, will be presented on Dec. 5-8, and March 7-8, respectively.

### BEGINS NEW YEAR

## Cabinet Guides MSGA

Freshman class elections on October 16 . . . "Free phones all over the campus" . . . Biggest charity drive ever . . . Old exams on file . . . Car wash . . . Coordinating half-time shows . . . Student tutoring service . . .

The foregoing is no hedge-podge, merely a few of the coming year's projects aired at the Men's Student Government Association cabinet meeting, presided over by president Edgar Fisher, Monday night.

The cabinet decided that freshman houses will nominate and elect house officers on October 2 and on the same night nominate candidates for the president of the freshman class. Anyone, not just a floor councilman, is eligible for these offices. The candidates for class presi-

dent will then speak before the freshman assembly on October 9. The election will be a week later, October 16, in the freshman meeting. Handshaking, politicking, and campaigning will fill the intervening week between the speeches and the election.

Independent Dormitory Council elections are set for next Thursday, October 4. The independents are allowed one representative per fraternity-size constituency. Dick Phillips heads the committee covering both fresh and independent elections.

For the biggest campus charity drive ever held, MSGA plans to hold concurrently — to stimulate competition between Campus Chest drives on the East and West campuses. Co-

operating committees will be established for the drives, which will be held before Christmas.

"In my opinion, in the foreseeable future there will be free phones all over the campus," ventured Pat Patton, MSGA treasurer. After getting fraternity phones, MSGA is working to establish phone centers in the independent and freshman dorms. Eight or ten phones would be installed in a room so that there would be prompt phone service available to all.

Also along phone lines, the cabinet is going to have a list of important campus phone numbers mimeographed and posted near all telephones.

A meeting of the half-time coordination committee was set for (Continued on Page 5)



# The Duke Chronicle

FOUNDED IN 1905

The Tower of Campus Thought and Action

Published every Tuesday and Friday of the University year by the students of Duke University, Durham, North Carolina. Entered as second class matter at the Post Office at Durham, N. C., under the Act of March 3, 1879. Delivered by mail, \$3.00 for the University year, \$1.50 per semester; cost of postage to nonresident undergraduates not in residence on the campus. Subscriptions should be mailed to Box 4696, Duke Station, SALLY W. MCINTOSH Editor JOHN W. ZIMMER Business Manager

## Paradoxical Position

Durham's Fire Department will hold its breath for the next three weeks as the Pan-Hellenic House is once more laden with the highly inflammable mixture of freshman women and sorority rushers.

For the first time, Coordinate Board published an interesting and helpful sheet of information and advice to freshmen and upperclassmen. Included in this were two letters, one written by a sorority woman and the other by an independent, giving their individual reasons for the choices they made during rushing.

Each sorority will tout its social activities, its feeling of sisterly love and its civic-minded projects. Each independent will happily declare her freedom from monthly dues, Thursday night meetings and the early morning rituals.

On this campus sororities hold a unique position in that the women do not live together and the dormitories generally demand the greater loyalty. Another paradox about the situation is that the Woman's College chooses most of its efforts and energies on sororities during rushing while for the remainder of the year the Greek groups are largely forgotten.

Last year only 178 freshmen joined sororities. Although there are no figures to indicate how many of these women went independent voluntarily it is certain that the problem will be aggravated when the 200-woman dorm opens next fall.

The "cut systems" are determined by the national councils of the various sororities so there's nothing that can be done about that no matter how many people are hurt by them.

So, freshmen, ponder all these things. Remember that Greek letters after your name won't change the letter grade in Botany after mid-semester. Try and see what difference there has been between sorority members and independents since you have been here. Make your own decision because you will have to live with it for four years.

## An Adequate Examination

Within the next week, leaders of the campus Young Republican and Young Democratic Clubs will meet to set a date for a pre-election debate involving a high-ranking representative of each party. Just prior to the national election, there will be a mock campus election sponsored by the two groups.

Such a contest may be an accurate test of the voting strength of the campus, but the final, and significant results fall into the columns in every state in which a Duke student lives. In many states—indicated elsewhere on this page—the deadlines for registering to vote are rapidly approaching.

Anyone who doubts the power of a small group of voters may be reminded of the Kentucky presidential vote in 1952 when Adlai Stevenson won by a majority of slightly over 700 popular votes. Republican complacency may well be the reason that 1948 was a year that George Gallup will never forget.

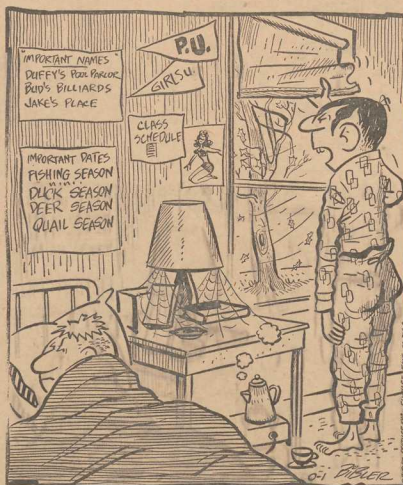
Both presidential nominees expressed hope early in the campaign that the nation-wide tours and addresses would provide an adequate examination of our foreign and domestic policies. This, then, makes it easy for those uninformed in affairs outside of the Duke sphere to get a brief but important glance at the world around them.

With frequent meetings of the youth of both parties planned for the next five weeks, University students are in a better position than the citizens of large communities to examine the premises on which the candidates base their campaigns. The Chronicle will present concise summaries of the platforms and principles to supplement the work of the parties.

Before we can exercise a right which has been granted us only after centuries of strife and sacrifice, we must register by mail in our home states. We cannot, as conscientious citizens of a government concerned with international waterways instead music in West Campus cafeterias, sit complacently by while registration and Election days are scratched off our calendars.

## LITTLE MAN ON CAMPUS

by Dick Bibler



"NUTHIN TO DO ON A LOUSY DAY LIKE THIS—WHADDA YA SAY WE GO TO CLASS?"

## REGISTRATION

Below are the deadlines in the 48 states for registering to vote in the presidential election. Residents of North Carolina may register in person on Oct. 13, Oct. 20, and Oct. 27.

|               |   |                |                          |
|---------------|---|----------------|--------------------------|
| Alabama**     | Oct. 27                                   | Montana        | Sept. 20                 |
| Arizona       | Oct. 1                                    | Nebraska       | Oct. 26 (Lincoln, Omaha) |
| Arkansas**    | No registration                           | Nevada         | Oct. 6                   |
| California    | Sept. 13                                  | New Hampshire  | Oct. 27                  |
| Colorado      | Oct. 23                                   | New Jersey     | Oct. 27                  |
| Connecticut   | Oct. 13 (some towns Oct. 20)              | New Mexico     | Oct. 8                   |
| Delaware      | Oct. 20                                   | New York       | Sept. 19—"Central"       |
| Florida       | Oct. 6                                    | North Carolina | Oct. 27                  |
| Georgia       | May 5                                     | North Dakota   | No registration          |
| Idaho         | Nov. 3                                    | Ohio           | Sept. 26                 |
| Illinois      | Oct. 8                                    | Oklahoma       | Oct. 26                  |
| Indiana       | Oct. 6                                    | Oregon         | Oct. 6                   |
| Iowa          | Oct. 27 Des Moines<br>Nov. 6 elsewhere    | Pennsylvania   | Sept. 17                 |
| Kansas        | Oct. 16 (Wichita, Topeka,<br>Kansas City) | Rhode Island   | Sept. 7                  |
| Kentucky      | Oct. 26 elsewhere<br>Sept. 8              | South Carolina | Oct. 6                   |
| Louisiana     | Oct. 6                                    | South Dakota   | Oct. 29                  |
| Maine         | Oct. 18-Nov. 1                            | Tennessee**    | Oct. 17, Oct. 27         |
| Maryland      | Oct. 6, Oct. 9                            | Texas**        | No registration          |
| Massachusetts | Oct. 6                                    | Utah           | Oct. 31                  |
| Michigan      | Oct. 5                                    | Vermont        | Nov. 3                   |
| Minnesota     | Oct. 16                                   | Virginia**     | Oct. 6                   |
| Mississippi** | July 6                                    | Washington     | Oct. 1                   |
| Missouri      | Oct. 9-13                                 | West Virginia  | Oct. 6                   |
|               |   | Wisconsin      | Oct. 24                  |
|               |   | Wyoming        | Oct. 23                  |

\*\* Poll tax required.

## TOWER TALK

Despite the wind and rain of Durham the mailman brought a letter to our office that had been addressed wrongly. It read, "Duke Chronicle, Duke University, Chapel Hill, N. C." It would seem that our fame has spread far enough to overshadow our cohorts from the Hill (the letter came all the way from Raleigh). Go, Tarheel, daily that is.

After years of scholastic supremacy Giles has taken the fabled fall of the proud. However, the women of Giles do not seem to have lost their sporting blood with their quality points. After Dean Brinkley's assembly last week a note was found on the front door of Pegram, the new champion. It read "Congratulations, Pegram" and it was signed, "Giles." SWM

COED EDITOR, RUTH SZEKELY; ASSISTANT EDITOR, FRED SPEAKMAN; EDITORIAL BOARD, BOB YOUNG, AL HEIL, ALICE MCKEE; COLUMNISTS, DICK BETTS, SALLY HAZEN, TOMMY THOMAS, WEBB LEONARD, JIM WADSWORTH, BILL BICKETT; MANAGING EDITOR, FRED SZEKELY; ASSISTANT MANAGING EDITOR, BOB NOBLE; NEWS EDITORS, STEVE HAMMER AND ROGER KNAPP; COED NEWS EDITOR, JUDY BRUGH; COPY AND PROOF EDITOR, SKIP LIVINGSTONE; FEATURE EDITORS, WILLIE HARSTINE AND HOWIE BERNARD; COED FEATURE EDITOR, NANCY NUTTER; EXCHANGE EDITOR, BELDEN RANDOLPH; FILE EDITORS, CAROLYN MOORE AND DON WESTERHOLAND; DESK AND PHOTOGRAPHY FEATURE EDITOR, CARLTON COLQUHITT; HEADLINE EDITORS, BRUCE BROOKS AND JOHN YOUNG; SENIOR STAFF REPORTERS, SHIRLEY MOORE, BATTLE RANKIN, DOT FINNEGAN, TOM ROBINS, RUSTY SALLIKER, JOHN BALLARD, BETSY MONAHAN; SPORTS EDITOR, BILL DONOHOF.

COED BUSINESS MANAGER, SANDY GREENE; ADVERTISING MANAGER, JIM BARKER; CIRCULATION MANAGER, BILL JOHNSON; NATIONAL ADVERTISING MANAGER, JAY GARVIN; MAILING CIRCULATION MANAGER, BILL STALEY; WEST CAMPUS CIRCULATION MANAGER, DICK HUSTER; ADVERTISING ROUTE MEN, JOHN ANSLER, CRAIG CHOATE, JOHN EMERY.

## Over There! Over Where? Keys And A Kettle

By RUTH SZEKELY

At 5 a.m. Monsieur le Conducteur knocked on my compartment door whispering "Marsaille, une demi-heure!" and I hastily peered out the window to see the rocky, golden coast of the Mediterranean and of Provence go sweeping by. It was July 8 and I was heading down from Rotterdam where my student ship had landed to Aix-en-Provence for an international youth conference.

From Marseille I hopped a shuttle train, bus and taxi over to Aix, and at 7:30 a.m. stood bagged and bewildered on a narrow, dusty street, staring up at the huge door of 35 Rue Roux-Alpheron where I hoped to stay for a week before the conference began. The street was desolate and the buildings shuttered except for one third-story balcony where a woman was hanging out some wash.

I kept ringing the doorbell of number 35 for about fifteen minutes before the woman yelled down to me who are you looking for? and I said Madame de Mazan and she said Who? and I said Madame de Mazan, MAI-I said Madame de Mazan, MAI-ZANI and she said Madame de Mazan? and I said YESI and she said The electricity's been off on this street for an hour ... try knocking.

### WHERE HAVE YOU BEEN

Anyway, two hours later the electricity must have gone on again because it was then that Madame de Mazan stuck her head out of her third story window and in the midst of my explanation that I was a friend of a friend of a friend who ... she shouted down "Where have you been, mon enfante! I was expecting you at 7:30!"

She was a sweet old woman, but our first conversation was a bit one-sided because she was so occupied chattering on to me in French about how she couldn't talk or understand a word of English and what a pity we couldn't understand each other, that she wouldn't give me even a moment to let her know that I sort of spoke French. When she found that out she was delighted and invited me into her sitting room for tea every afternoon, delighted too in the fact that my name was Ruth and her was Naomi—Fate and all that, you know.

As for my half of the apartment it was really beautiful, furnished with antiques and full of the atmosphere I was looking for, and Madame de Mazan even gave me my own keys to the apartment and a kettle to heat water in case I got tired of ordinary of cold. A sweet old thing.

### DRUGSTORES & DIXIELAND

The friend of a friend of a friend who was the friend before Madame de Mazan was a young woman who lived with her husband in a small and somewhat shabby one-room apartment there in Aix, and it was with them that I got my first sense of true continental hospitality. They had me over to dinner often that first week, and afterwards when the three of us sat discussing anything from drug stores to segregation or just listening to Beethoven or Dixieland, the shabbiness and smallness of the room didn't matter at all, and I got my first sense too of that rather ambiguous but very real term on the universality of man.

(To Be Continued)



## Dr. Gross Announces

# 22 Members Join Faculty, Staff Over Summer Recess

The Duke faculty and staff have added twenty-two full-time members, Dr. Paul M. Gross, vice president and Dean of the University, announced Friday.

About half of the appointees began their work with the opening of the fall semester, the others having assumed their duties earlier.

Dr. Percival Robertson, visiting professor of geology for the fall semester, holds degrees from Yale and Washington University. He has served as president of the Association of Geology Teachers and the Illinois State Academy of Science, besides teaching at Principia College, Elmhurst, Ill., from 1915 until his retirement this year.

Dr. James B. Wyngaarden, associate professor of medicine, attended Calvin College, West Michigan College of Education, and the University of Michigan. Before coming to Duke, he taught at George Washington School of Medicine.

Dr. John R. Overman, associate professor of bacteriology, studied at Duke and the George Washington School of Medicine, the University of Maryland, and Washington and Jefferson College. He previously taught at the Emory University School of Medicine and served with the U. S. Public Health Service.

A formed student of Duke University, Dr. Sidney Olansky, associate professor of dermatology and syphilology, also attended New York University and Glasgow University in Scotland. Before joining the Duke faculty he taught at Georgetown School of Medicine, George Washington University, and Emory School of Medicine. He also served as colonel in the U. S. Public Health Service.

Earlier appointments include Robert S. Rowe, professor of civil engineering and department chairman; and John N. Macduff, professor of mechanical

engineering and department chairman.

Other new appointees, listed by schools and departments are:

English: Richard W. Van Fossen, instructor.

School of Medicine: Harold T. Dodge, assistant professor of medicine; Albert J. Silverman, assistant professor of psychiatry; Doris C. Grosskreutz, assistant professor of anesthesiology; and Edward S. Whitesides, associate in orthopedics.

School of Nursing: Rose Forgiene, instructor in pediatric nursing; Anna Fauver, instructor in operating room nursing; Emily B. Campbell, Ruby Wilson, and Lucy Koesy, instructors in nursing arts; Lorene Bates, counselor and instructor in nursing.

Naval Science: David C. Barry, assistant professor.

Psychology: Theodore O. Zahn, visiting assistant professor.

Romance Languages: Arron M. Hardee, instructor.

Russian: Henry M. Nobel, Jr., visiting assistant professor.

Bureau of Testing and Guidance: Mary A. Sanders, examiners.

## Coeds Study Abroad

Taking time out from their courses at Duke this year nine East Campus coeds, are studying and traveling abroad in connection with the Svesetoriar and Smith College Junior Year Abroad Programs, being accepted after applying to the colleges.

Elizabeth Hanes of Charlotte; Rose Hynes of Richmond, Va.; Adelia Linnemann of Burling-

ton; and Dinah Porter of Greenville; are studying in France.

Susan Dannel of Washington, D. C. is in Germany, Jane Haskett of Rochester, Ind. is in Scotland, and Vega Miller of Brooklyn, N. Y. is in England.

Planes, Radio Control Units, Number Picture Sets, Archery, Plastic Models, One-Day Film Developing, H O Trains, Carolina Hobby Shop  
Post Office Corner Phone 4-7711

### Just Received

IVY LEAGUE  
LONG SLEEVE

## SPORT SHIRTS

In the new popular IVY

Stripes. Regular \$5.95  
value

only \$4.95

THE  
YOUNG MEN'S  
SHOP  
Main at Church

## Kemp's in Chapel Hill Does It Again

ALL NIGHT LONG SALE  
7 P.M. to 7 A.M.

Friday Night, Sept. 28

PRICES DOWN BELOW NEW YORK

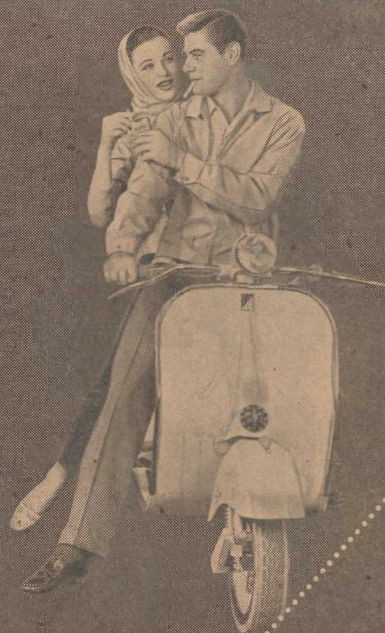
Come Early and Get Your Pick

High Fidelity Equipment and Records  
Finest Selections South of New York



RECORDS AND HIGH FIDELITY EQUIPMENT  
207 East Franklin Street — Phone 5396  
CHAPEL HILL, NORTH CAROLINA

# Gives you more to enjoy



- Quality Tobacco
- Real Filtration
- Full King Size



the taste is great!  
FILTER TIP TAREYTON

© A. T. Co.

PRODUCT OF The American Tobacco Company AMERICA'S LEADING MANUFACTURER OF CIGARETTES

### SPECIAL

Religion 1-2, 51-52  
OUTLINE

The Book Exchange

"I WON'T WEAR A THING  
BUT TOWNE AND KING!"



says HECTOR LIBERACHI, pogostick champ.

SNOWBANK, ALA., May 28 — Rated the fastest man on a pogo stick since St. Vitus, Hector circled his old man's barn on his bouncing broomstick in 7.3 sec. flat, a new record. Hector's hobbies are taxidermy, fiddlin' and girls. When interviewed, he said modestly, "Twarn't nuttin'. I had a dry track!" Hector, a 7-color sweaterman, says Townella Sweater Shirts are his four season favorite.

TOWNELLA Sweater Shirts; premium quality imported fibres. 6 California colors; S-M-L-XL—10.95. Crew length box in matching colors; 10½-13—1.95.

TOWNE AND KING, LTD.  
Coordinated Knitwear  
595 Broadway, Redwood City, California



## BOS-Sandals Dance

## Showboat Arrives Tomorrow Evening

Tomorrow evening in the Woman's College Gymnasium, Beta Omega Sigma and Sandals, honorary sophomore leadership fraternity and sorority, will present their annual semi-formal dance for the entire school from 8-12 p.m. with Phillmore Hall and his band providing the musical entertainment.

The theme of this year's dance will be "Showboat" with gang-planks, cotton bales, smokestacks, and a paddle wheel transforming the gym into a Mississippi River boat. Pennants hanging from the ceiling, lanterns, and life preservers will also serve to complete the decorating motif. Refreshments will be served in a mock cafe.

At 9:15 p.m. members of BOS and Sandals will hold a reception for the deans, house counselors, chaperones, and other honored guests on the second floor of the gym. Among those present will be Dr. and Mrs. J. R. Castellano and Miss Vivian Lee, Sandals advisor, who will be chaperones, and Dean Robert B. Cox.

In addition to the closed reception, a 20-30 minute floor show will be staged at 10:15 p.m. on the bandstand. Hank Rouse will be master of ceremonies for the program which will include a Charleston exhibition by Elaine Herndon and Steve Hammer, a tap dance routine by Elaine Herndon and Mary Alice Childs, and a can-can dance by Betty Quillian, Lou Ann Brown, Kay Davis, Mary Alice Childs, Penny Martin, Susie Thomas, and Mary Anne Evans, pianist. A chorus line of four boys and Ginnie Mac Ivor, Connor Lucas, Liaudia Liebrecht, and Nancy DeLong will sing "Mississippi Mud."

Ron Lovitt will team up with Hank Rouse to introduce the different acts in a comical manner.

Bids are being sold by members of Sandals in the halls of the West Campus Union. The prices are \$2.50 per couple and \$1.50 stag. Tickets will also be sold at the dance.

Dark suits and ties for the men and evening dresses for the women will be the accepted dress. Hats and coats may be checked in the basement.



Practicing for the can-can step they will do during the intermission of the BOS-Sandals dance, "Showboat," tomorrow night at 8 p.m. in the Woman's College Gymnasium these six coeds, all members of Sandals, are from left to right Susie Thomas, Betty Quillian, Kay Davis, Lou Ann Brown, Mary Alice Childs, and Penny Martin.

## Blazer Fitting Scheduled For November; Commissions Will Benefit West Campus

A representative from the Robert Rollins Blazer Co. will fit West Campus men who wish to buy Duke blazers on Nov. 1, in room 208 Flowers.

Though an active blazer tradition is in effect on East Campus, an attempt is being made to revive the tradition on West this year.

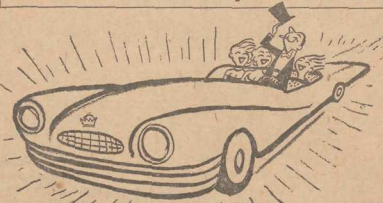
The blazers are not only of use to the students who wear them, but are also of financial value to the school. A commission is paid by the Robert Rollins Blazer Co. to the Senior Class which is used in a fund

for the senior that includes financing the annual senior gift and the Campus Chest Drive. The blazers may be bought for \$30.95.

"Many men are needed to work on the establishment of this tradition and also for the sales campaign," stated chairman of the blazer committee Dick Jacobes. This sale campaign will take place the entire month of October.

IT'S FOR REAL!

by Chester Field



IF I HAD A MILLION!

"Life," he cried, "is so unfair I should have been a millionaire! I'd drive a car, a white Jaguar with leopard trim and built-in bar. Complete with blondes and red heads too. A movie queen or two would do... I'm lazy, crazy, debonnaire I'd make a perfect millionaire!"

"Instead," he sobbed, "at twenty-five I'll have to work to stay alive!"

MORAL: If you are \$999,999.00 short of being a millionaire, but you like your pleasure big, Enjoy the big full flavor, the big satisfaction of a Chesterfield. Packed more smoothly by Accu-Ray, it's the smoothest tasting smoke today!



So, try 'em. Smoke for real... smoke Chesterfield!

For the Complete ARROW Line

FOLLOW THE

TO

MILLER-BISHOP COMPANY

"WHERE DUKE MEN MEET"

## SPECIAL!

Our Famous

IVY-HALL

OXFORD SHIRTS

\$3.99

Regular \$5.00 Value.  
Blue and White Oxford.

THE  
**YOUNG MEN'S**  
SHOP  
Main at Church

SPECIAL  
Religion 1-2, 51-52  
OUTLINE

The Book Exchange



Wise Up!

Keep the Home Folks  
Informed and They'll  
Keep You Solvent

## ORDER BLANK

Send to:  
Duke Chronicle  
Box 4696  
Duke Station  
Durham, N. C.

or drop by  
the Chronicle Office  
in 304 Page

- ☐ \$3.00 for Years Subscription  
☐ \$1.50 for One Semester

Name .....

Address .....

City and State .....

## The B.M.O.C. is here!

Big model on campus, that is. It's the new Arrow University shirt... all-around choice of smart college men, from button-down collar in front—to center button and full box pleat in back. And these men are really traveling in style with their Arrow ties... in the season's highest rated patterns.

Oxford cloth shirt (in white and five muted colors, including new "linen"), \$5.00; same model in authentic tartan stripes, \$5.95; checks and stripes in cotton-rayon, \$7.95.



ARROW  
CASUAL WEAR



# Independents To Hold Elections Concert Opens UNC Musicians

**Polling Will Take Place On Thurs., Oct. 4;  
Candidates Must Submit Petitions By Tues.**

Elections of Independent representatives to the Men's Student Government Association will take place on Oct. 4 under the supervision of the Independent Dormitory Council and the MSGA Elections Board.

The polling will be done in the archway between the Phi Delta Theta section and House FF.

Any Independent is eligible to run for office, but each candidate must get a petition bearing the signature of 25 Independents and turn it in to Dick Phillips in house GG, room 213, not later than midnight Tuesday, Oct. 2.

Representatives will be elected from each of Houses FF, GG, and HH. Independents living outside of Few Quadrangle or in town will vote for delegates at large.

The number of delegates will be determined by the number of fraternity size constituencies. This total is being computed now and will be announced next week.

## -MSGA CABINET-

(Continued from Page 1)

this Monday. This group, with Pep Board, shall function to straighten out the times and order for various participants in half-time entertainment and to eliminate confusion.

The MSGA Department of Education is seeking to build up a file of old exams so students can see what previous exams were like an obtain an idea of what to expect. Also planned is a student tutoring service. Student tutors would be registered with MSGA, and their names distributed. Tutors would be paid a fee of \$1 an hour by their pupils.

Vice President Don Duffy called upon upperclassmen to enforce traditions more rigidly. He said that the success of such a program depends upon the support of the student body as a whole.

WDBS music will be substituted for the taped music now being played in the dining halls. The music will not be the regular programs, but selections from the WDBS record collection.

MSGA announced 3-5 p.m. each weekday afternoon as office hours.

All independents including engineers are eligible to vote in the election.

Assisting MSGA in conducting the election will be the elections board of the Independent Dormitory Council.

## Duke Loyalty Fund Plans Tenth Year Of Annual Canvass

Plans were made at a luncheon meeting this past Wednesday for the University's tenth annual Loyalty Fund Campaign.

George M. Ivey of Charlotte is the chairman of the Loyalty Fund's special 10th Year Advisory Committee.

Last year more than \$222,000 was raised during the drive. Some 9,000 donors including both alumni and non-alumni exceeded the year's expected goal of \$225,000 by \$7,000.

Wednesday's luncheon was held in the Old Trinity Room and attracted about 50 persons. Attending the luncheon were Edwin L. Jones of Charlotte, 1956-57 chairman of the Duke University National Council, and Norman A. Cocks, also of Charlotte, chairman of the Duke University Board of Trustees.

With Mr. Jones presiding, the progress of the Loyalty Fund was traced since its beginning in 1947. Mr. Ivey gave the report on the progress that the Duke alumni had made with the Fund. President A. Hollis Edens outlined the University's program and its needs.

The Arts Council opens its 1956-57 season tonight with a duo-violinist concert by Dorothy and Edgar Alden, accompanied by Jan P. Schinhan, pianist, at 8:15 p.m. in Page Auditorium.

Mr. and Mrs. Alden, who graduated from the Oberlin Conservatory of Music, are former residents of Raleigh, where Mr. Alden associated with Meridith College and Mrs. Alden taught at St. Mary's. Duke University heard them last when they soloed in May with the Duke Symphony Orchestra. Both Mr. and Mrs. Alden are now on the faculty of the University of North Carolina.

Mr. Schinhan is also on the faculty of U. N. C. He joined in 1955 after receiving his Ph.D. degree from the University of Vienna. He is a specialist in the field of folk music, working also as an organist, conductor and composer.

Tonight the Aldens accompanied by Mr. Schinhan are presenting a varied program, including one of Mr. Alden's own works—*Trio for Two Violins and Piano*. They are also presenting works by Giuseppe Tartini, *Sonata in D*, "Andante," "Menuetto," and "Allegro assai"; and Johann Sebastian Bach's *Concerto for Two Violins in D Minor*, "Vivace," "Largo, ma non tanto," and "Allegro."

After the intermission they will play *Sonatina*, "Allegro non-tanto," "Andantino," and "Allegro moderato," followed by Christian Sinding's work *Serenade*, op. 92, "Allegretto," and "Adagio." The finale of the evening is a selection from the Suite Antique by Albert Stoeckel. This includes movements "Bourree," "Aria," and "Gigue."



Dorothy and Edgar Alden, members of the University of North Carolina faculty, will open the 1956-57 Arts Council season with a duo-violinist concert accompanied by pianist Jan P. Schinhan at 8:15 P.M. in Page Auditorium, Friday.

## Student Seminar To Hold Meet Oct. 14

The Duke University Student Seminar will hold its first meeting on Thursday, October 4, at 6:30 p.m. in room 201 Flowers Building. During the year the group will read tragedies written by representative authors from Aeschylus to Tennessee Williams.

## Style Notes



## Button-Down Ivy Stripes

The Shirt that shows off your Fashion Know-how. Always trim, always proper... narrow blue, grey, or brown stripes on white Oxford cloth.

\$4.50

Lucky Freshmen  
Tom Coulter  
Winner of Shetland  
Sweater  
Philip Farmer  
Winner of Ivy Sportshirt  
Pick up your prizes

van Straaten's

118 West Main St.

This Year  
Get The



## RABBIT HABIT

WASH DRY  
and FOLD

Only 7c Per Pound

Sheets Ironed Free

ONE STOP  
CLEANS IT  
ALL

COMPLETE  
LAUNDRY  
SERVICE

SHIRTS LAUNDERED  
DRY  
CLEANING

## Jack Rabbit Laundry

AND DRY CLEANERS

1103 W. CHAPEL HILL STREET

Smart apparel  
is synonymous  
with Milton's

When Milton's started featuring ivy clothing six years ago he was almost laughed out of the state. Now you will note that just about every campus shop now carries some variation of this. We still feel we have an advantage of being the pioneer in this field since we design so many of our items which cannot possibly be found in any other store. The nicest part about these exclusive creations is that they cost you no more and in many instances much less than clothing that isn't distinctive and exclusive.

Milton's  
Clothing Cupboard  
Downtown Chapel Hill



## Duke's Mixture

## Students Begin Semester With Pins, Rings; BOS-Sandals Dance Tops Week-end Events

"Heigh-Ho,—Heigh-Ho—It's back to school we go," came the tune of our campus scholars last week as they piled out of every vehicle known to science to begin another fall semester of study (?). For many, the summer had been a profitable one, for it seems that everyone about the quad except you and me has an additional piece of jewelry.

Newly-pinned are Betsy Coker and an SAE; Dee Danehower and Linton Brooks; Betsy Babcock and a boy from Carolina; Kendra Bell and a Chapel Hill student; Mary Mosteller and Tony Weir; Harriet Henderson and Dick Ulrick; Ginny Partlow and Bill McMen; Frank Swafford and Chris Yuke; Don Kreps and Mary Adams; August Hock and Betty Corney; Jarvis Dean and Carol Carle; Bun Springston and George Keithley.

While the second page headlines say that among these are also Shirley Wright and a boy from VPI; Bootsie Dunlap, Sally La-Bonne, and Ellie Dean to boys from home; Gail Shehadi and a boy from South Carolina; and Sally Chambers to a KA at Carolina.

Those wearing the diamond rings and a big grin today are Gale Johnson to Jim Farlow; Ann Ausley and Susie Schweich to home-town beauty; Margie Berrington to Charles Hyman; Polly Price to Edward Sims; Nancy Burns to Lennor Britt; Nancy Ware to Bob Pascal; Ann Dixon to John Laking; Betty Tuttle to Paul White; Ann Hunter to Lyn Ikenbury; Tish McBride to Bill Black; Fran Smith to Jim Vaughn; Carolyn Ketter to Wade Penny; and last but not least Peggy Paul to Tyson Jennette. Congratulations to all of you!

Desperately hunting about for scraps of news this week-end brought some interesting tid-bits one of which is tomorrow night BOS joins Sandals with a dance that should be mighty great. Showboat is their theme and 'tis said that the floor show of can-can and tap dancers brings back that old Mississippi era in a twinkling. Lone fraternity function found the Phi Kaps headed for the woods and a cabin party tonight.

Want to be a Queen? The Sigma Nu's are the place as this Sunday they open up their Chapter House to all Freshmen girls for their traditional Sweetheart Contest. A combo is going to be beating the tempo and all in all its promises to be a perfect way to end this week-end. See you next week!

## James Cannon III Is Appointed Dean Of Duke Divinity School At N. C. Methodist Conference

James Cannon, III, of the Myers Park Quarters Conference was given a special appointment as Dean of the Divinity School at the final session of the annual Western N. C. Methodist Conference in Winston-Salem, Sunday Sept. 23.

Given special appointments as professors at the school were K. W. Clark of the Charlotte First Quarterly Conference, J. H. Phillips of the Calvary Quarterly Conference, and M. S. Rickey of the Central Quarterly Conference.

Student appointments were given to C. M. Young, T. A. Langford, D. D. Saine, F. D. Beaty, and Welden Bayless. They were also given to E. F. Bradley, W. A. Kale, C. B. Lacy, and R. G. Russell, Jr.

## Public Health Service Confers Traineeships To Nursing Students

The U. S. Public Health Service has awarded traineeships worth a total of \$25,600 to eight students of the Nursing School.

The program is designed to prepare more professional nurses for positions in the various areas of nursing education and service.

Students receiving the awards are: Nancy A. Bischoff of Hazelwood; Martha C. Davis, Kenly; Esther Mae Lavines, Wagram; Joyce V. Smith, Camden, S. C.; Shirley Davis, Columbia, S. C.; Betty Jo Boyd, Kingsport, Tenn.; Virginia H. Sinclair, Washington, D. C.; and Dorothy Anne Suesens, Southampton, N. Y.

The traineeships for study at Duke are among some 500 assigned to nursing and public health schools over the United States. The total appropriation for the program was \$2 million.

The Duke trainees were awarded \$2,400 stipends for work toward bachelor's degrees in nursing and nursing education. Also, they will receive money for tuition and other expenses. Each traineeship was granted for a one year period for September 1956 through August 1957.

Only graduates of approved nursing schools were eligible to apply for traineeships. Selection was based upon established admissions procedures.

## THE ORIENTAL

CHINESE AND AMERICAN RESTAURANT

Orders To Take Out 116 East Parrish Street

OPEN MONDAY THRU SUNDAY 10:30-2:30, 4:30-9:40

## Golf Links To Open Soon

Progress on the new Duke University Golf Course has been going along steadily during the summer months, and with more progress during the coming winter and spring the course will be ready for use next September.

During the past summer, eighteen fairways were cleared of trees and nine greens were partly completed. The irrigation system was partially installed, and three lakes for use as water supply and water hazards were excavated.

During the coming school year work will continue on the course to make it complete and ready for students, faculty and employees when they return next September. At the present time the remaining greens are being built and finished and the rough is being cleared. Also the fairways are being finished.

Construction on a nine acre practice area, similar to a driving range, and on an eighteen hole practice putting green is in progress. Both of these will be used by the physical education department.

No plans for a clubhouse have been made because of the lack of money. No playing fee has been set as of yet.

The course is designed for the

inexperienced as well as expert players, since the length can be varied from 6,900 to 7,200 yards by moving the numbers of the greens.

The architect for the project is Robert Trent Jones of New York, while Edward M. Cameron is directing the construction.

## Week-End House-cleaning Sales—

SATURDAY, SEPT. 29TH  
Inspirational Reading, Religious Books, and Psychology.

SATURDAY, OCT. 6TH  
Biography, History, and Philosophy.

Don't Miss Your Subject.

## The Intimate Bookshop

205 E. Franklin St.  
Chapel Hill

## Dracon and Cotton

At last...

A WEATHERCOAT  
YOU CAN  
Wash!



29.50

LONDON fog

by Loundontown

An exclusive fabric. Washing-machine tests prove London Fog Weathercoats hold their shape, won't fade, pucker, or shrink—drip-dry in two hours to smooth, smart wrinkle-free appearance without ironing!

Jullians

AUTHENTIC  
UNIVERSITY  
STYLES

BILLS  
MAILED  
HOME

Where Duke Men  
Shop With Confidence

THE  
YOUNG MEN'S  
SHOP



Better lighting?

A home freezer?

A useful motor?

Whatever Teacher, Mom,  
or you desire.

Reddy awaits your call  
at the nearest outlet  
box. Instantly at  
your service.

DUKE  
POWER COMPANY  
Serving the Piedmont Carolinas

FOR OVER

8578 Days

We have offered our Services to Duke students at

reasonable prics. Why not do as

1,000's of

Duke Alumni have done?

Bring your Laundry and Dry Cleaning

to us.

SOUTERN DRY  
Cleaners and Laundry

756 NINTH STREET

WEST DURHAM



## IFC Releases Semester Regulations Governing Fraternity-Freshman Relations

The Interfraternity Council has released first semester regulations governing relationships between fraternity men and freshmen.

Off limits for freshmen are all fraternity social functions and the fraternity housing sections (except telephone booths).

Fraternity men, in turn, are restricted from freshmen houses and quadrangles (also with the exception of telephone booths).

However, Freshman Advisory Council men and authorized IFC members may enter freshmen houses, provided they do not wear fraternity pins. Their activities in the houses are to be confined to the men under their guidance.

A freshman may visit his brother in a fraternity house only if no other fraternity men are present.

"Shake-ups" are illegal during this period. To "shake-up" is to verbally agree to join a fraternity, although no bid is involved.

Fraternity men are forbidden to mail letters, cards, or invitations to freshmen.

No chow trains are allowed.

No money may be spent by fraternities for rushing during the first semester.

For fraternity men to attract attention to their fraternity or house by singing outside, displaying fraternity flags, or other attractions is illegal.

Exceptions to any of these rules may only be made by the vice-president of the IFC. Breaking any of the first six rules

is considered a major violation. Penalty for violating the seventh rule will be at the discretion of the executive committee.

Rushing begins Feb. 4, and these rules will be in effect until then.

### Girls Receive Honor

Ivy, freshman scholastic honorary, tapped seven sophomore girls, Winnie Davie Satterfield, Mary Reinhardt, Wilda Davis, Phyllis Roy, Rebecca Dunlap, Barbara Danehower, and Anita Eagle, at the Woman's College Honors Assembly Sept. 24.

## NEWS IN BRIEF

¶ Folk dancing for students and faculty will be held Friday, September 28, at 8 p.m. in the Ark on East Campus.

¶ "Marines in Review," a Camp Pendleton, Calif. radio show, will salute the Oct. 6 football game between Duke and the University of Tennessee, on the ABC Radio network Sunday, Sept. 30, at 11:05 a.m.

The fight songs of both Duke and the University of Tennessee will be played by the Camp Pendleton all-Marine Band.

¶ Asbury Building will be open at night starting Monday, Oct. 1. The record library will be open for student listening and Arts Council record-lending from 2-5 p.m. and 7-10 p.m.

## RELIGIOUS NEWS

Dr. James H. Phillips of the Department of religion will speak on "Power to Become" at the 11:00 a.m. chapel service Sunday.

The week's other religious activities include:

PRESBYTERIAN: "Yourself Inc." Dr. Waldo Beach, speaker.

EPISCOPAL: "A Dialogue on the Holy Communion" Mr. Michael Malone and the Rev. Ronald Woodruff, speakers.

LUTHERAN: A Get-Acquainted Picnic. Meet on the chapel steps on West Campus or at the East Campus circle.

METHODIST: "Program of Recreation" Belton Joyner, speaker.

Temple: "Aloha from Hawaii."

Watts: "Introduction to the Dead Sea Scrolls."

On Wednesday Oct. 3, the Graduate Religious Life Group will meet at 5:45 p.m. in the Men's Graduate Center for a dinner-discussion meeting. Dr. H. Shelton Smith will speak on "Christian Faith and Campus Life."

## STUDENTS OF DUKE UNIVERSITY

are invited to try the fine food and friendly service at the

## The Ivy Room

Featuring Choice Steaks and Chops delicately prepared for discriminating people. Dine in comfort at the beautiful Ivy Room tonight.

## Freshmen Compete In Bow-Dink Events

Bows, dinks, freckles, jeans, bermudas and khakis were required dress for the freshman men and women who swarmed to Hanes Field for the annual Dink-Bow Day classic this afternoon.

The sophomores, who annually plan the affair, meted out black marks to every freshman woman who did not have 10 freckles on her nose or did not wear the prescribed bow. Freshmen who accumulate 10 black marks are required to wear red bows.

Freshmen who signed up Tuesday night were grouped by dorms into teams to participate in various races and contests. Winners were awarded a series of ludicrous prizes. Those who had not signed up for the teams watched as their classmates crawled, hopped, jumped and pulled in the various contests. The activities were capped by a general tug-o-war.

As the Chronicle is being distributed on East Campus, freshmen are being served a lawn supper by sophomore girls.



The  
Perfect  
Outfit:

styled and dyed  
for a perfect fit  
and a perfect  
match.

SKIRTS by Evan-Picone dyed to match Glasco Angalura and Pringle Cashmere Sweaters.

SKIRTS by Bernhard-Altman dyed to match their own Connaught and Bernhard-Altman Cashmere and Lambs Wool Sweaters.

Coordinating sets in:

Nut Brown, Azure, Avocado, Lake Blue, Lemon Yellow, Light Blue, Pink, Poppy-Red, Champagne, Ocean Green, Royal Blue, Beige, Grey, Navy, Gold, and Shrimp.

*The College Shop*

1004 West Main

- Old Books at 48¢
- Old Books at 72¢
- Old Books at 97¢
- Old Books to tickle your fancy—

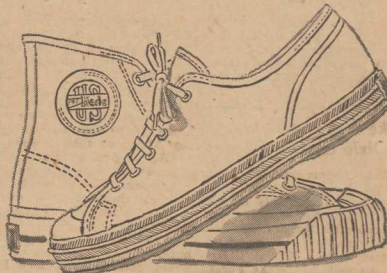
**The Intimate  
Bookshop**

205 E. Franklin Sts.  
Chapel Hill

## They're smart on campus



## They score in sports ...



## They rate on a date ...



They're **KEDS®**  
...they're great!



**United States Rubber**

Rockefeller Center, New York 20, N. Y.



# Bedeviled Blue Marches On Cavalier Stronghold



Carrying the brunt of the hard-hitting Duke attack is bruising fullback Hal McElhaneey. McElhaneey, only a junior, averaged 3.7 yards in 50 rushes last season, and got off to a good start Saturday with a 4.2 average on 13 carries. Last winter Mac was voted the outstanding wrestler in the ACC after coping the 191-pound championship.

## Cross Country Team Has First Time Trial As Hotelling, Wells, Noble Vie For Top Slot

Coach Al Buehler's varsity harriers will run their first time trial over the new 3.5 mile course tomorrow in preparation for their opener at Clemson on October 8.

## Duke vs. West Virginia In Dixie Classic Opener

West Virginia will be Duke's first-round opponent in the Dixie Basketball Classic this December, Coach Hal Bradley announced after the drawing held Wednesday.

Other entries in the Christmas spectacle are Wake Forest, State, Carolina, Iowa, Utah, and DePaul.

Lettermen Henry Wells and Bill Hotelling are fighting for the top position on the squad, with newcomer Bob Noble running close behind.

Scraping for fourth and fifth position are Dave Pearl, Andy Lewis, and Bob Nordlie, with sophomores Bob Posthumous and Murray Atkins on their heels.

"We are in a much better shape at this time than we were a year ago. We still have a lot of work ahead of us before we meet Clemson, though," Buehler said.

"I've been pleased with the improvement of newcomers Bob Evers, John Jordan, Jack Linden, Marvin Barnes, and Gregg Raimondo."

The frosh coach, who formerly was head coach of tennis at Duke, has been drilling his top 22 men in two units, and he discloses that the two groups are almost equal in performances exhibited in practice so far.

The only injury problem is in the form of Ron Bostian, 193-pound guard from Salisbury, who suffered an ankle sprain two weeks ago. The cast was removed this week and Bostian will probably be in the starting lineup tonight.

This year's Blue Imps are small in number, but according to Coach Bob Cox, "they have a wonderful spirit and have worked very hard." The griders opened drills on September 5.

The biggest problem facing the Coxmen is the multiple-offense system employed by the Baby Wolfpack. Bill Smaltz mentors tonight's opposition and he, like Earle Edwards, the

## Duke Must Stop Bakhtiar To Beat Virginia; Halfback Rudy Hampered By Ankle Injury

By WARREN SPARROW  
Chronicle Sports Reporter

Duke's bedeviled Big Blue marches on Charlottesville, Va., tomorrow afternoon in an effort to corral a pesky band of Virginia Cavaliers led by the wonder boy fullback Jim Bakhtiar.

In the Iranian plunger, the Cavaliers proudly boast the ACC rushing leader and single-game ground gaining record holder.

Bakhtiar, who last year riddled defenses for 4.6 yards a crack, carved out a new rushing record last week against VMI when he netted 210 yards on 27 carries. His awesome 210-yard total was 26 more than Duke's total offensive effort in last week's fight with the plucky Birds of South Carolina.

Running the Virginia split-T will be sophomore quarterback Reece Whitley, who spent his freshman year nursing a broken ankle and had to settle for spring drills to develop into a first line field general.

## Freshman Harriers Open Season Tomorrow With Triangular Meet In Duke Stadium

Eight of Al Buehler's "whiz kid" freshmen harriers will run officially in a triangular meet with two Charlotte high school

teams this Saturday in Duke Stadium to open their '56 campaign.

Facing Myers Park and East Mecklenburg High schools at 3:30 p.m., the first eight men on Buehler's Hound and Hare squad will represent the Blue Devils on the 2½ mile course while the remaining men will run unofficially. Top man on the team are Cary Weisiger, who gained second place in last year's Penn State mile with a 4:27, Tom Menaker, with a 4:32, and Bill Every, who took the mile in the Duke-Durham relays last spring.

Saturday's next three men will be Malcom Shields, Phil Boyde and Fred Hurd, while the seventh and eighth men will be chosen during time trials this afternoon.

## Fall Baseball Practice Starts Under Jim Bly; Freshmen Can Try Out

Although the diamond season is still many months away, the Duke Blue Devils have opened fall baseball practice under the supervision of Assistant Coach Jim Bly.

The sessions are being held thrice from one o'clock to three daily on the recently improved playing field and are to continue as long as the men weather permits. Fall practice is designed to keep the men from losing their fitness and agility over the winter months.

Coach Bly, who is also head of the freshman team, said that all freshmen desiring to play baseball should come out immediately. "I would prefer those men to have had some experience, though," he added.

## Guest Tickets

Student guest tickets for the Tennessee game can be purchased for \$4 Tuesday morning at the ticket office in the Duke Indoor Stadium.

Last year's club had a 3-1-1 record, losing only to State College by a 32-13 margin. The team took wins over Virginia, Wake Forest, and North Carolina, and tied Clemson, 14-14.

Only 34 players will don tops for the tussle tonight. After tonight's action, the locals are idle until Oct. 12, when they meet the South Carolina freshmen at Columbia.

The two top Duke units: LE—Allen Whittier, David Walker.

RE—Bob Spada, Dwight Bumgarner.

LT—Mike Marr, Marvin Muslewski.

RT—Carl Drye, Larry Powell.

LG—Mike McGee, Charles Hartwig.

RG—Ron Bostian, Brian Johnson.

C—Sid Bosh, Art Browning, and Chris Calson.

QB—George Harris, Bob Crumline.

LH—Bunny Bell, Bob Garrison.

RH—Deems Allie, Dan Lee, and Jerrrell Gleave.

FB—Bob Cruickshank, John Ross.

## Duke Football Games On Television Sundays

Highlights of the preceding day's Duke football games with Coach Bill Murray and his staff as narrators will be telecast this season Sunday at 4:30 p.m. over Station WTVD, Channel 11, Durham, it was announced today by Athletic Director E. M. Cameron.

A bruising defensive line is anchored by tackles Henry Jordan, team captain, and Ronnie Melnik. Guard Harold Outten and center James Keyser were other key figures in the Virginia defense that completely contained the VMI speedsters last Saturday. The starting line averages 215 pounds.

Assistant Coach Bob Cox, who scouted the Cavaliers in their 18-0 VMI victory, was very much impressed with the hard working fullback's high pumping knees action and his rugged defensive job. The police and passing ability of quarterback Whitley also drew praise from the Duke aide.

As to stopping "Batty-car", whose name has—and will be—qualified with every conceivable cliché, Murray hopes tackling him on every play will soften his bull-like thrusts at the win-hungry Devils.

Murray has not announced any changes in personnel and will probably open with the lineup of a week ago with the exception of the injured Skitch Rudy. Sophomore George Dutton will probably gain the starting nod if Rudy is not recovered from sprained ankle.

## LINE GREEN

Commenting on the Gamecock fiasco, Murray pointed out more specifically what he had been saying throughout the fall concerning the inexperience of the 1956 Devils.

Roy Hord, potential All-America timber, played but a scant 50 minutes during the 1954 campaign. John Kersey, Buzz Guy, Phil Seudler, and Jack Harrison got their first real combat duty in Columbia. John Long, Charlie Klinger, and Bud Stanley were other relatively green members of the Duke forward wall that could not harness the slippery King Dixon and Alex Hawkins.

## Duke Items

Former Blue Devil great Bob Pascal has been tabbed as one of the top freshmen in the Canadian Football League. Pascal, playing for Montreal, led the loop in scoring after the first two games with 24 points, then was switched to the defensive team because he was the biggest back on the team.

Coach Hal Bradley is not nearly as sad over Duke basketball fortunes as could be expected after losing seven lettermen. . . . One of the reasons is Bob Vernon, a 6'0" transfer student from Campbell Junior College, who will be a candidate for a guard post.

Sonny Jurgensen, who has varsity letters in football and baseball, is considering going out for the cage squad after football season. . . . If he made it, he'd go down as one of the few Duke stars to win letters in three major sports.