

## SPORTS

Thanks to all sixty callers for being such good sports in our little joke. No prizes awarded. No salesmen will call. You lose!

# The Chronicle

## WEATHER

Did you know you can make it rain just by making a lot of noise? Have a blast tonight, make it rain tomorrow.

Duke University

Volume 74, Number 16

Friday, September 22, 1978

Durham, North Carolina

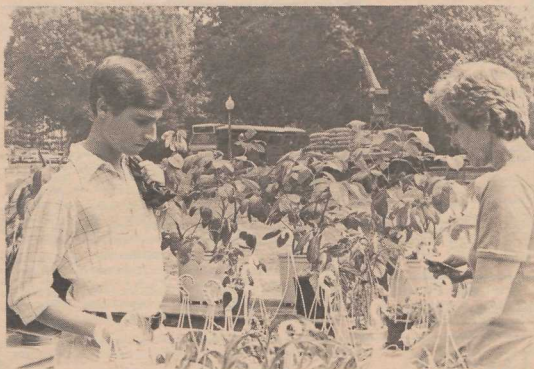


Photo by Lisa Brown

Gregg Berdy ponders a plant purchase at the bazaar that was set up on the main quad all day yesterday.

## Does Wood pick up speed?

## \$700 ad deluge swamps Duke

By Margaret Donnelly

You've probably noticed the deluge of Evelyn Wood Reading Dynamics advertisements on campus — over \$700 worth of deluge to be specific. So what's all this expenditure about?

To find out, a reporter attended one of the free hour-long lessons billed in an advertisement to be "the end of cramming" and a guide on how to "handle all the work college demands" by increasing your reading speed. Sound phenomenal?

Well, it is a phenomena, but not the one it's cracked up to be. The reporter's speed only increased from 336 to 472 words per minute and upon repeating the test two hours later, her speed was back to 340 words per minute.

That's not much help with the "eight chapters of Babylonian history" the student is supposed to conquer while "Cathy's waiting".

Ken Brown, the Evelyn Wood Reading Dynamics instructor who gave the free lesson, said "the course is basically eye training that increases memory recall and concentration, not necessarily speed. The technique is not good for Shakespeare or math texts but works well for novels and prose texts."

So much for you engineers.

The basic technique is to teach the student "not to read one word at a time, but to look at the whole page with 180 degree peripheral vision as one looks at a parking lot full of cars," said Brown.

How did Evelyn Wood get on campus?

Frank Emory, ASDU president, OK'd them organization during the summer without realizing he was tacitly giving it ASDU-sponsored status, said Emory.

Many forms are being cleared now, and "they are here for a one-time evaluation practice" said Emory. "Some people have said they're pushy, but I'm pushy sometimes, too. I don't have any qualms about that."

Some complaints have also been voiced that the line "And Cathy's waiting" on one flier that appeared in *The Chronicle* is sexist.

"I think it's sexist myself," said Emory. "It could

have been done in better taste."

Ginger Sasser, editor of *The Chronicle*, said she agreed with Emory that the ad could have been done more tastefully.

"While our advertising policy is not to publish anything that is obscene, libelous, sexist, racist, or in any other way counter to our editorial policy, said Sasser, "unless an ad is blatantly against our policy, it will run."

"I don't think the Evelyn Wood ad was blatantly sexist," she said.

The criterion for determining whether an ad is sexist or not is very subjective, she added.

Sexist or not, there are a lot of hard-sell techniques being used before, during and after the free lesson.

During the free lesson the student is repeatedly told that he/she must make a deposit to hold his/her place in future classes. Brown told students after the session that they would be contacted by phone before the next lesson.

"I'd just caution all students to be smart consumers," said Emory. "We wouldn't let Brown be on campus if we had doubts about the course's legitimacy."

Brown, discussing student skepticism about the course, joked that Woody Allen once said he had taken a speed reading course that enabled him to read *War and Peace* in four hours.

"It was about Russia," said Brown, quoting Allen:

## Post office eases mailbox shortage

By Betsy Pfeiler

The apparent post office box shortage which affected approximately 150 students on East and West campuses last week is now under control, postal authorities at Duke said recently.

Duke Station Master Jim Holleman said the problem was due to "lack of communication" between post office employees and returning students.

Many students changed residences over the summer, either moving off campus or from one campus to the other, and failed to notify the post office of their plans.

As a result, many boxes were held for owners who did not want them.

The boxes could not be re-assigned until the former owners contacted the post office, or until it was discovered that the box rent had not been received. In many cases, this did not occur until a week after school started.

Kyle Simpson, a junior and West campus resident, was one of the students affected by the delay. Before moving to West campus this fall, Simpson wrote to College Station to request a change of box to Duke Station.

She was notified in August that no boxes on West campus were currently available.

"I just came to school assuming that I didn't have a box," she explained "so I went in and got on the waiting list."

A list of students waiting for box assignments was furnished to the post office by Barbara Buschman, student housing coordinator.

During the delay, the excess mail was handled by general delivery, a process which involved lines at post office windows, and slowed service.

Continued on page 16

## Administration rejects Center bid packages

By Ginger Sasser

The University administration decided last Friday to reject all bid packages on the University Center, and to change the method of contracting out the building, James Ward, University architect, said yesterday.

The lowest bid total for the proposed student center was approximately \$15.2 million—\$3 million above Ward's estimated cost of the center.

Ward said he thinks the building can be constructed for much less than \$15.2 million if the University hires a general contractor to cover all phases of the building.

Until last Friday, the University planned to act as the general contractor — eliciting bids on different phases of the building, including masonry, tile work, landscaping etc.— with the Houston-based firm Construction Management, Inc. acting as the coordinator of the project.

According to Ward, this method of construction though the most economical, has not caught on in the Triangle area. A general contractor who has worked with subcontractors for many years would probably be able to get lower bids on the various phases of the

building than the University did, said Ward.

Ward said specifications for a general contractor would probably be sent out within the next 10 to 12 days.

According to Ward, the administration has not decided whether to use an invited list of contractors or whether to advertise widely for a bid that will include all phases of the work.

President Terry Sanford "may want to consult the Executive Committee of the Board of Trustees" before a decision is made, said Ward.

The board meets next Friday and Saturday.

Ward, who has been working on the University Center since 1971, said he is "discouraged by the delay, but not dismayed."



Photo by Rob Brandt

Hey, Andrea Livingston, what's it like finding a camera lens in your mailbox in the morning?

### In this issue:

- Bagels ..... pg. 6
- Satellites ..... pg. 8
- Economics ..... pg. 9



## CLASSIFIEDS

## Announcements

Dissertation problems? Find solutions and support in group led by two clinical psychologists. For further information, call Dr. Cooper at 493-1466. Leave name, address, telephone.

Halby's Delicatessen. New Location with Outdoor Dining Area. Salads, Sandwiches, Beer, Wine, Catering Services. Forest Hills Shopping Center, Durham, NC. Hours — 10 to 10, Phone 489-2811.

Interviews for legislators at-large will be held Thursday and Monday 7:00-9:30 in the ASDU office. Sign up at 104 Union.

Donald W. Gifford, I've found a receipt for Exxon gasoline belonging to you. If you need it, call Doug at

x2663. I'll throw it out at Monday's end.

Voice, Piano, and Instrumental instruction to enhance your musical experience. By professional singer & musician — phone 489-4834.

## For Sale

FOR SALE EXXON GAS: Reg. 59.9, Under 64.9, High Test 66.9. Best Exxon price in town. 181 W. Markham Ave. Across from Kwik Kar Wash #2 (near East campus).

FOR SALE: 1974 Toyota Corolla, 4 door, radials, new Motorol AM-FM radio. Recent service. Automatic, 54,000 miles. \$1300 call 688-8372. Also For Sale: Twin mattress — good condition, \$20.00. Loft Lumber-3 beams and platform, \$20.00.

Sofa \$85, area rug \$20, shag carpet \$45, lavatory

\$10, toilet \$15, Merimekko \$7 each. Call 286-7416 or 684-2490.

1972 Toyota Corona Deluxe 4-speed, air conditioned, AM/FM-8 track, 251,650 miles but runs well. New 1466, muffler. Overall excellent, \$1200. 684-5982.

CASSETTE TAPES: Factory fresh TDK SA C-90's for \$3.25 each or \$30.00 for ten. LYNCO-SPEAKERS: Duane A-35's (70 watts RMS each), \$100 for the pair. Call Ed, x-6856, evenings.

FOR SALE — Manual typewriter, Olivetti-Underwood, excellent condition, \$50. Calculator, Texas Instruments SR-50A. Call 383-3573 evenings.

Room wanted for male to rent. Close to campus at reasonable rent. Call 684-

0449 after 5:00.

## Help Wanted

HELP WANTED: Part-time help at convenience store. Location in Durham near Duke campus. Experience preferred — not required. Call 732-2021 (Hillsborough) between 9:00 am and 3:00 pm, Mon. thru Fri.

Part-time help needed: waiters & waitresses, busboys, dishwashers. Day and evening opening. Apply in person at The Blair House Restaurant, 3930 Chapel Hill Blvd., between 2:30 and 4:30.

Intern in hospital needs help cleaning 1 bedroom Central Campus Apt. \$4/hr. Call 684-8111 Beeper 213.

## Lost and Found

Lost: Gold Bangle Brace-

let on 9/18. If found, please call 684-1542. Thanks!

Lost — Silver necklace on Thursday 9/21. Please call 682-1030 or return to Flowers lounge. Thank you.

## SPECTRUM TODAY

INTER-VISIT CHRISTIAN FELLOWSHIP will meet at 6:30 in York Chapel (second floor of Gray Bldg.). We will close at 7 and leave en masse to hear Os Guinness speak in Chapel Hill. Please join us. 684-7766.

ATTENTION PH activists and pledges: all are welcome to a tea at Cindy Roberts, 3021 Oregon at 3:30. Please bring anything you would like.

CHEERLEADERS: Practice is today at 4:30 at Wallace Wade. Be there!

ALL ZETAS: Don't forget our mixer with the Sigma Nu team at 9. Wear alacka!

AKPH's, THETAS, TRI-DELTS: We're meeting at House G Bench today to paint banners bride...at 2 p.m. Refreshments! Get yourched for the football game! See you there.

Found: A 4-month male collie/shepherd. Black w/brown & white markings. White flea collar. Call Denise, 383-7849 (evenings), 684-6134 (day-evening message).

BSU FALL CONVENTION this weekend, so no regular fellowship Fri. at the Baptist Student Center. For everyone going, look forward to a super weekend!

## THIS WEEKEND

Pip, pip! 1978 Oxford Program Servitors — Reunion after the game on Sat. in Wannamaker IV Commons Room. Bring cider, bitter quash or craps — pictures, too! Cheers!

TOBACCO ROAD MEETING Mon. at 7:45 in 301 Union (above the Oak Room) Bring your great ideas for stories! Any interest is welcome.

The Duke Gay Alliance will hold its first business meeting of the year on Sun. at 7 p.m. in the East Campus Center to discuss this year's goals and activities. Refreshments following. Everyone welcome.

DUKE UNIVERSITY/MEDICAL CENTER PROMOTIONAL OPPORTUNITIES  
LOCATION: C-Campus MC-Medical Center

ADMINISTRATIVE/PROFESSIONAL, NURSING AND TECHNICAL listings appeared in yesterday's CHRONICLE.

## CLERICAL:

Secretary — C, 40 wpm typing. Exp. required. One position requires shorthand. (2) positions. \$3.71.  
Labor Relations Spec. — C, Previous union & supervisory exp. preferred. Temp. for 6 mos. (1) position. \$5.21.  
I/O Receptionist — C, Computer I/O receptionist. 2nd shift-Saturdays & Sundays, 2 hrs/wk. (1) position. \$3.82.  
Art's Model — C, Models are used by photo instructors — no special requirements necessary. 6 to 10 hrs/wk. (3) positions. \$5.00.

Admin. Secretary — C, Typing 50 wpm. Ability to use typewriter, arrange appointments & meetings for director. Responsible for correspondence file maintenance. Research & varied office activities. Mac Card exp. & college degree preferred. (1) position. \$3.82.

Data Terminal Opr. — MC, Must be able to type 20 wpm. (1) position. \$3.71.  
Patient Processor — MC, Exp. preferred working in hospital setting. Ability to talk w/patients & assist doctors in setting up appointments & reservation. Coordinate schedule of ancillary services. (1) position. \$3.71.

Library Assistant — C, Exp. required. Knowledge of two modern foreign languages (French & German) preferred. Ability to supervise students in bibliographic searching. Typing 40 wpm. Bookkeeping helpful. (1) position. \$3.82.  
Copy Ctr. Coord. — C, Perform a variety of duties associated with the operation of a quick copy center to include customer contact, cost estimations, project schedules & machine operations. (1) position. \$3.71.

Editorial Asst. Sr. — C, Perform a variety of complex tasks involved in collecting, checking, & editing faculty bibliographies for inclusion in a comprehensive Faculty Publications Bulletin. Temporary position. \$4.40.  
Customer Service Rep. — C, Consult w/clients at D.U. to determine printing needs & determine specifications for printing jobs. (1) \$4.40.

Office Clerk — C, Perform routine clerical duties applying established office systems or procedures. (1) position. \$3.01.  
Clerk Typist — C, 40 wpm typing. Exp. (1) position. \$3.23.  
Clerk Typist — MC, 50 wpm typing. Exp. in office management. Great bookkeeping desirable. (1) position.

Secretary — MC, 40 wpm typing. Past exp. required. One position prefers some tech. typing exp. All positions prefer dictaphone exp. & med. term. One position prefers some exp. w/mac card. Two positions 30 hrs/wk. One position temp. until December 1978. (10) positions. \$3.71.

Accounting Clerk — C, Exp. in performing variety of clerical accounting tasks in maintaining basic financial records & processing related data. All positions require 40 wpm typing. (3) positions. \$3.50.

Insurance Claims Processor — MC, One position requires 40 wpm typing. One position requires typing. Med. term. & insurance background desirable. One position may require overtime, rotating late night. (2) positions. One position abbrev hrs. \$3.71.

Switchboard Opr. — C, Prefer Toll & Inward exp. Rotating shifts. (3) positions. \$3.33.  
Clerk-Typist Sr. — C, 40 wpm typing. Exp. required. (2) positions. \$3.50.

Data Entry Opr. — MC, Must have exp. using k/p. Knowledge of key-to-tape or key-to-disc exp. (1) position. \$3.50.  
Account Clerk — MC, Post all daily accounts to ledger showing type & amount of payment. Reconcile daily revenue against records. Past exp. preferred. Position prefers k/p exp. (1) position. \$3.50.

Clerk-Typist — MC, 40 wpm typing. Prefer some office exp. & typing exp. (3) positions. \$3.23.  
Med. Transcriptionist — MC, 40 wpm typing. Med. term. & dictaphone exp. (2) positions. \$3.71.

Admin. Secretary — MC, 50 wpm typing. Past exp. desirable in running a small office. Both positions prefer knowledge and/or familiarity w/Duke University Med. Ctr. One job will involve some public & community relations. (1) position. \$3.82.

Secretary — MC, Highland Hospital. 40 wpm typing. Heavy typing. Some receptionist duties included. (1) position. \$3.71.

Mail Clerk — MC, Perform clerical & delivery duties associated w/the operation of D.U. Mail Services. (1) position. \$3.23.  
Med. Records Clk. — MC, Ability to work w/typing systems & deal w/public. Weekend work necessary. (1) position. 2nd shift. \$3.23.

Clinic Assistant Sr. — MC, 20 hrs/wk. Be able to work w/patients & doctors & perform various duties. Perform some nsg. assistant background or exp. (1) position. \$3.50.

Medical Records Clk. — MC, Ability to work & file w/terminal digit filing system & familiarity w/office machines. (1) position/rotating weekends. 2nd shift — some knowledge of CRT operations preferred. (1) position 1st shift-good communications skills & exposure to basic coding. Skills desirable. (2) positions. \$2.23.

Clinic Interviewer — MC, Typing required. Hrs. will be 10:00 AM-7:00 PM. Ability to deal w/public. Willingness to be flexible in assuming responsibility. Prefer past exp. dealing w/public. Some data terminal exp. desirable. (1) position. 9 mos. \$3.82.

Staff Assistant — C, Located in Washington, D.C. Good communication skills, as well as secretarial. This individual will work for the Director of SGPB's Washington office as well as the 1978-79 Scholar-in-Residence. (1) position.

Composer/Typist — C, Exp. in phototypesetting helpful. Will consider all individuals who have good typing skills. One position hours: 5:00 PM-2:00 AM Sunday-Thursday. (2) positions. \$3.71.

Material Control Clk. — MC, Perform a variety of clerical & manual tasks in receiving, verifying, storing, & issuing various supplies, materials, & equipment for D.U. (1) position. \$3.50.

Secretary — C, 40 wpm typing. Perform secretarial & clerical duties, handle all correspondence & compose letters when appropriate. Schedule & arrange all office appointments. (1) position. \$3.71.

Library Assistant — C, Reading knowledge of German & some study of music and/or music history. Other languages helpful. Aptitude for detailed work highly desirable. Library exp. desirable. Possibility of some evening & weekend hrs. Skilled in use of a typewriter. Ability to understand & apply the classification scheme & cataloging rules essential. College or equiv. (1) position. \$3.82.

Library Clerk — C, Post secondary education or pertinent work exp. Knowledge of foreign language desirable. Typing required. Adaptability & accuracy essential. Possibility of some evening & weekend hrs. (1) position. \$3.50.

CRAPTS, TRADES, & SERVICES:  
Public Safety Officer — C, Must meet criteria established by the Attorney General of the state of N.C. Rotating shifts. (6) positions. \$4.05.

Trades Helper — MC, Assist skilled tradesman & perform semi-skilled duties in the installation, maintenance & repair of equipment & facilities & in construction, maintenance & upkeep of buildings. Valid N.C. driver's license. (1) position. \$3.23.

Animal Caretaker — MC, Knowledge of or exp. w/animal care & nutrition. Also must be able to drive standard transmission vehicles to two positions. (7) positions. \$3.23. B.U.

Gen. Maint. Mechanic Sr. — MC, R/Performer repair & maintenance. Assist journeyman level craftsman in the repair & maintenance of Med. Ctr. plumbing, electrical, heating, a/c & refrigeration facilities & equipment. (3) positions. \$4.72. B.U.

P.T. Assistant — MC, Grad. from an approved school of Physical Therapy Assistant training program & N.C. State P.T. Assistant License. (2) positions, P/T on weekends. (1) position P.T. (3) positions. \$3.82.

Grounds Equip. Opr. — C, Perform semi-skilled duties in operating equipment & perform a variety of manual tasks in maintaining D.U. grounds, gardens, golf course & forest. (1) position. \$3.01. B.U.

Floor Finisher — MC, Must be able to maintain upkeep of floors. (2) positions. \$3.01. B.U.

Courier — C, Responsible person to drive departmental car on all areas of the campus. & Med. Ctr. Deliver mail, checks, time cards, & bank deposits. Responsible for metering mail & maintenance of car. (1) position. \$3.01.

Grounds Maint. Supr. Sr. — C, Supervise & participate in the preservation, development & care of all grounds, drives, walks, & parking areas of the D.U. campuses & certain designated off-campus properties. (1) position. \$4.05.

TO ALL DUKE EMPLOYEES: All Duke Employees wishing to transfer must have been employed for six months in a position before being eligible to transfer unless special permission is granted by supervisor. Transfer/Upgrade Request Forms are available at the Human Resources Office or Employee Relations Hospital. Any Employee wishing to transfer must fill out the transfers for referral to appropriate openings by the Employment Office.

## THE Daily Crossword by Jack L. Steinhart

ACROSS	DOWN
1 Donations	37 Subside
5 Sidekicks	37 Daughter of Loki
9 Delusion's partner	38 Arm bone
14 Bow or	39 Sub rosa
15 Great Lake	43 Hold back
16 Dread	44 Grog
17 Thousand:	45 Balbo
comb. form.	46 Blore or
50 Literary	47 Irregular
monogram	50 Literary
11 Alliance	51 Alliance
2 Temporal	52 Truss items
3 Venus' island	53 Grob
4 Animal's nose	55 Offsetting
5 Pounding instrument	61 Practical joke
6 Soviet co-ops	62 Small monkey
7 Parjurer	
8 Balkan native	
9 Grass or	
10 Der —	
11 River: Sp.	
12 Long, long time	
21 Y — say die!	
22 Ancient Norse chieftain	
25 Onetime French president	
26 Doubleday	
27 Spokes	
28 Subject	
30 Fed. power org.	
32 Wedding milieu	
33 Fishhook line	
34 Tuberoos Pacific roots	
36 K.O. calls	
40 Extro credit	
41 Barbarian island	
42 Western mountain range	
48 Math term	
49 Part of Greater London	
52 Tau crosses	
54 Joined (with)	
55 Grass or apple	
56 Resembling a paddle, old style	
57 Somme seasons	
58 Hayworth or Moreno	
59 Produce emotion	
60 Make thread	
61 Shade of green	
64 Culbertson	

ROPE	SAPID	SPAT
AIR	CRUD	PUNA
LOTA	NAUT	ATOM
MOOS	ROO	STOKE
NUMA	NAUT	ATOM
CHERO	ELDE	ESP
HOSED	PSALM	STU
ORBS	NOFTY	AFAR
ROE	PLANO	BADILL
ESIS	OTIO	BDIONS
TEASET	ADIT	
NOFAT	DTP	SIPS
ECOS	ADORE	ANIL
ALOE	ANWER	NINE
PETS	DANNY	STEV

1	2	3	4	5	6	7	8	9	10	11	12	13
14				15				16				
17				18				19				
20				21				22				
23				24				25				
26				27				28				
29				30				31				
32				33				34				
35				36				37				
38				39				40				
41				42				43				
44				45				46				
47				48				49				
50				51				52				
53				54				55				
56				57				58				
59				60				61				
62				63				64				
65				66				67				
68				69				70				



# Vance still optimistic despite prior setback

By Marvin Howe  
© 1978 NYT News Service

AMMAN — U. S. Secretary of State Vance flew to Saudi Arabia Thursday without winning crucial support from Jordan for the Camp David summit decisions but with assurances for a continuing dialogue.

Lengthy talks between the U.S. and Jordanian delegations Wednesday and a tete a tete between King Hussein and Secretary Vance Thursday were not sufficient to persuade Jordanians to join the peace process at this time.

Jordan has asked the U.S. for more guarantees, more clarification and more time to consult other Arabs, namely Saudi Arabia and Syria, according to authoritative Jordanian sources.

## Rushing things

Jordanian leaders feel the U.S. is "rushing things" and stress no decisions are likely until the king goes to Washington, if he goes. Sources close to the king said he was planning to go to the U.S. next month but now his trip is not certain.

Stressing that it was not a party to the Camp David agreements, Jordan reaffirmed its conditions for any future comprehen-

sive peace settlement: Israeli withdrawal from all Arab territories and self-determination for the Palestinian people.

In an exchange of farewell statements at the airport, Jordanian Minister of State for Foreign Affairs, Hasan Ibrahim, failed to make any commitment on Jordan's participation in the next phase of peace negotiations, except to say that the two countries had agreed to continue their dialogue on the issues related to a comprehensive peace settlement.

Secretary Vance showed no disappointment over Jordan's reluctance to support the Camp David documents but expressed understanding that the Amman government would want to be fully informed before it developed its own position.

There was some speculation that Jordan was waiting to consult with Saudi Arabia, its chief financier, before it took a final position on the Camp David documents.

Secretary Vance, who arrived in Riyadh Thursday, hopes to persuade the Saudis to endorse the summit results or at least get the Jordanians to enter negotiations at an

early phase, according to informed sources.

Like Jordan and other moderate Arab states, Saudi Arabia has declared that the Camp David declarations were not an acceptable formula for a peace settlement and stressed the need for a collective Arab position.

Vance is to hold talks with the Saudi leaders Friday and then fly on to Damascus Saturday where he is to brief Sadat's leading opponent, Syrian President Hafez al-Assad on the Camp David proceedings.



UPI Photo  
U.S. Secretary of State Cyrus Vance will talk with King Khalid of Saudi Arabia (left) today and with Syrian president Hafez Assad (right) tomorrow on the Camp David proceedings.

## Capital gains tax ruling

# Senate committee cuts taxes

By Edward Cowan

© 1978 NYT News Service

WASHINGTON — In a setback for the Carter administration, the Senate Finance Committee decided Thursday to cut capital gains taxes by \$3 billion a year.

Adopting a proposal by its chairman, Sen. Russell B. Long, (D., La.), the finance committee agreed by voice vote to exclude 70 percent of long-term capital gains from ordinary income tax, instead of the present exclusion of 50 percent. For a gain to qualify as long-term, an asset must be owned by a taxpayer for one year or more.

A change in the way capital gains — profits on the sale of securities, land or other assets — are taxed would benefit taxpayers in all income brackets who have such gains. However, Congressional aides said most of the benefit would flow to persons in upper-

income brackets because they account for most of the capital gains reported. A detailed breakdown by income brackets was not immediately available.

The committee's action could be modified by the full Senate when it acts on the general income tax reductions that the committee is drafting.

## Tax cut

The House in August approved a \$16.3 billion overall tax cut including a \$1.8 billion reduction in capital gains levies. However, \$45 million of that sum resulted from a House decision to give homeowners a one-time exclusion of up to \$100,000 of profits on the sale of a house.

Sen. Long thinks that this is too generous and he is expected to try to whittle down the exclusion in a House-Senate conference in October. The House, in turn, is likely to resist raising the excludable portion of capital gains to 70 percent, as is the administration.

With the Administration arguing that it is undesirable to give as much as \$3 billion of tax relief to persons with capital gains, it appears that the conference would make the excludable portion 60 percent or else find another approach.

## Deny deductions

In another development, the finance committee declared that a decision it made Wednesday to deny deductions for the ownership of yachts, hunting lodges and other facilities used for business entertainment would not apply to the purchase of season tickets for professional sports or tickets for the theater or opera. Those outlays would continue to be deductible.

Carter's sweeping proposals for tightening up on business entertainment would have made all such expenses nondeductible. But lobbyists for the theater and for professional sports told Congress that such a change would deprive them of an important part of their revenues and would force them to raise ticket prices.

By and large, Congress has shown little inclination to accept Carter's entertainment crackdown, apart from the limited tightening approved by the committee Wednesday.

In Thursday's drafting session, the committee also agreed to exempt from corporate income tax a new type of special corporation that states might create for the development of resources. The proposal for "general stock ownership plans" was outlined by Sen. Mike Gravel (D., Alaska).

## Automatic shareholder

He said Alaska contemplated that every resident of the state would automatically become a shareholder in the special corporation and that all or nearly all profits will be paid out as dividends.

Committee sources said they knew of no other state that contemplated such an approach to general public ownership of resources. If this provision — which has not previously been debated in Congress — is not stricken on the Senate floor, the sources said, the House is likely to kill it in conference.

The committee agreed informally to replace the present 15 percent minimum tax on preference income with a graduated alternative tax.

# Council head wary of Murdoch tactics

By Jerry Flint

© 1978 NYT News Service

NEW YORK — The leader of the city's newspaper union council on Thursday accused Rupert Murdoch, the Australian-born publisher of the New York Post, of making it more difficult to settle the six-week-old newspaper strike.

The council, made up of 10 unions, has been pressuring the striking pressmen's local to make some concessions. Murdoch, however, has publicly talked of asking these other unions to return to work and break the pressmen's picket line. In addition, he has openly attacked the representative of the council who was asked to determine who is at fault in the long strike, the pressmen's union or the publishers.

George McDonald, president of the Allied Printing Trades Council, called the 8,500 members of the 10 unions observing the picket lines "the chief victims" of the strike against *The New York Times*, the *Daily News* and the *Post*. He complimented the *Times* and the *News*, but said they are paying for Murdoch's mistakes.

"I am as surprised as most people in New York that the two greatest newspapers in the world, for whom I have the greatest respect, are allowing Rupert Murdoch to be their spokesman. They have told me that often they don't know what he is going to say until he has said it. But he is speaking in their name and they are getting the backwash

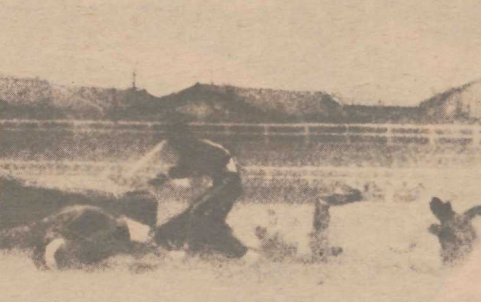
of what he says," McDonald said.

"Mr. Murdoch, who has never been in collective bargaining in the United States before and who has not even come to the bargaining table in this dispute, is trying to distract attention from his true purpose: to get the members of the Allied (Council) to go through the pressmen's picket line."

In response to McDonald, Arthur Ochs Sulzberger, publisher of *The New York Times*, said: "The New

York Times deploras the personal attack on Rupert Murdoch as president of the publishers association. He has been an able and articulate spokesman for New York City's struck newspapers, and he continues to have our support.

The council had asked Theodore Kheel, a well known New York mediator, to sit in on the talks as a fact-finder and advise them. Neither the striking pressmen nor the publishers wanted Kheel in.



UPI Photo  
Swept off his feet: typhoon winds of over 100 miles per hour hit Japan's Kitakyusau Island this week. At least 7 people died, and 92 people sustained injuries in the winds.



## Major study gives proposals to aid East Campus Library

By Gilda Keith

A major study outlining recommendations for the future of East Campus Library will be open for public perusal "within ten days," according to Ann Stone, associate librarian at Perkins.

The study, entitled *Alternative Definitions for East Campus Library Facilities*, is subdivided into three "Proposals":

- an Undergraduate Library/East Campus Library;

- a Liberal Arts/Humanities Library;

- a Fine and Performing Arts Library with Additional Services for East Campus Faculty, Staff and Students.

The Undergraduate Library would provide for "1) class reserves; 2) term paper sources; 3) independent outside reading; 4) recreational reading," the study says.

The Liberal Arts Library would provide for "the bulk of undergraduate study needs in the humanities," according to the study. It will "support reading and study assignments in the majority of humanities courses... and will support research-level work in the fine arts and in elementary/secondary education."

The third proposal will provide for "curriculum research and program needs of the Art department and performing arts institutes; offer basic support services for faculty and students involved in courses given on East Campus; and provide residents of the East Campus with study space, a basic reference collection and selections of 'current interest' reading material," the study says.

This recommendation is

one part of the Long Range Planning Committee Report which has a total of nine chapters, according to Stone, chairman of the 11-member committee.

Students residing on West Campus commented Wednesday that they felt East Campus Library "is not as good as Perkins."

Another said, "It's inconvenient, it's difficult to breathe in, and it's hot."

Other students Thursday said they like East Campus Library the way it is and one student commented that destroying the building would "really be a disservice to a lot of people on East Campus."



Photo by Rob Brandt

The Long Range Planning Committee is considering the future of the East Campus Library.

*"I've got Pabst Blue Ribbon on my mind."*

PABST BREWING COMPANY  
Milwaukee, Peoria Heights, Newark, Los Angeles, Pabst Georgia

Trinity  
Avenue  
Presbyterian  
Church

at the corner of  
Trinity & Gregson

CHURCH SCHOOL CLASS  
9:45

WORSHIP SERVICE  
11:00

Dr. William C. Bennett  
Minister

Frank M. Dew  
Associate Minister

W. Lloyd Cole  
Choir Master

For information call  
682-3865





# JEWISH STUDIES AT DUKE

Hillel will sponsor the following evening courses to be held at East Campus Center beginning week of September 25.

**BASIC JUDAISM.** Rabbi E. Rosensweig. Monday 7:30  
**A JEWISH PERSPECTIVE** on Euthanasia, Mercy Killing, Capital Punishment, and more. Dr. Ronald Meier (new Hillel Director). Tuesday 7:30  
**BEGINNING HEBREW.** Joyce Raynor. Tuesday 7:30

— Registration held at first class —

Additional courses including intermediate and advanced Hebrew, Bible study, Jewish art history, Jewish cooking, Yiddish, Israeli dancing, and Karate are being offered at the Hillel Foundation in Chapel Hill.

Call 1-942-4057 for information.

— Join Us —

**TONIGHT**  
**SHABBAT**  
**SERVICES**

at 7:00

**SUNDAY**  
**BAGELS and LOX**  
**BRUNCH**

from 11:00-12:30  
 price: \$2.00 affiliates  
 \$2.50 non-affiliates

*(Sponsored by Hillel)*

Dinner, Services, and Brunch will be held at the East Campus Center directly behind Giles dorm on East Campus.

for further info. or directions, phone:  
 x-1983 x-0067  
 x-7256 or x-5859  
 x-1331

## Interested in Hillel?

Name: \_\_\_\_\_

Mailing Address: \_\_\_\_\_

Dorm/Apartment Address: \_\_\_\_\_

Phone: \_\_\_\_\_

Year: \_\_\_\_\_

☐ Further information and mailings

☐ Affiliation (\$12)

Affiliation is your way of helping Duke Hillel to grow. All affiliates receive discounts on Bagels & Lox Brunches, Shabbat Dinners, the Passover Seders, Kosher Delis, and other terrific activities.

Return to:

P.O. Box 7695, College Station  
 Durham, N.C. 27708



# Poppin' fresh: roll with the hole

By Richard A. Brown

Transplanted Northerners and other certified bagel fans take notice — the roll with the hole has found its way to Duke University.

Accompanied by its close relative the soft pretzel, these freshly baked delights have officially been granted resident status on both East and West campuses over the past year.

On the chance that you have been wondering who and what is responsible for the production and distribution of these choice items, you need not search any farther than

downtown Durham.

Nestled cozily in the block just below Five Points near the Book Exchange on West Chapel Hill Street, The Bagel Place churns out almost 10,000 piping hot bagels and pretzels daily.

Preparation for the

## Feature

coming day's business, however, begins in the wee hours of the morning. Antoine, the chief baker, initiates production with the basic step of mixing the hundreds of pounds of flour, sugar, salt, water, eggs, and yeast. It is at this stage that the bagels, so happily devoured by so many of us, are conceived. After the mass of dough

is placed on hard racks to rise, it is divided into 50 pound semi-globs. At this juncture the rapid-fire mechanical operation starts.

The semi-globs are placed at the mercy of a menacing chute which immediately devours the innocent dough. Emerging on a conveyor belt as precision cut four ounce baby goblets, the road to bagelhood becomes increasingly perilous. After a scant few seconds on the belt, a cold steel cylinder tears through the mid section of each unsuspecting dough infant.

Next step, the babes are collected on boards and placed into a refrigerator with thousands of their

Continued on page 7



"Children are our greatest resource."

Dr. Carolyn McCormick will speak on Sunday, September 24 at 3:00 p.m. in Room 226, Perkins Library on "The Rights of the Child — a Baha'i Perspective." Everyone is invited, refreshments will be served. Sponsored by the Duke Baha'i Club and the Durham Baha'i Community

**THE FOUNDATION BOOKSTORE**  
Deals exclusively in science fiction, fantasy, and other speculative fiction  
WE BUY & SELL USED SCIENCE FICTION & FANTASY BOOKS!  
REGULAR FALL HOURS Tues-Fri 12-8/Sat 10-6  
136 E. Rosemary (across from Blimpie)  
NCNB PLAZA CHAPEL HILL, N.C. 967-4439

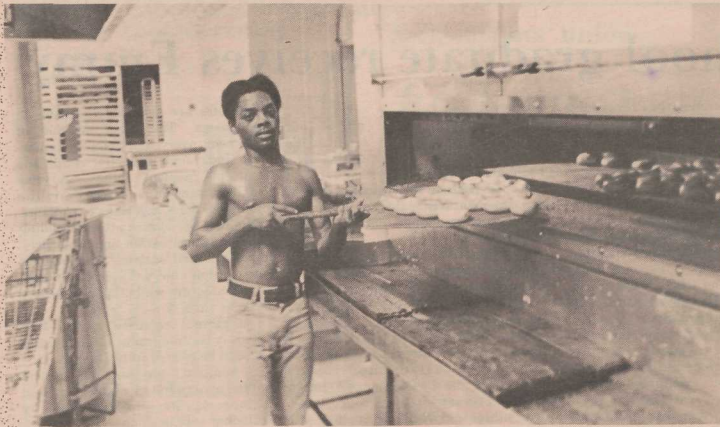
Join Us After the Game  
**Crepe Room**  
Enjoy Gourmet Meals at Reasonable Prices  
Featuring:  
• Crepes • Quiche  
• Chicken Kiev  
• Louis XIV Sirloin Steak  
• Sweet and Sour Pork  
• Flaming Desserts  
Mon-Sat. 8-11 A.M.; 11:30-2 P.M. 5-10 P.M.  
Phone: 489-6017  
Located in Willow Park Mall next to Bowling Lanes on Durham-Chapel Hill Blvd.

Mon., Tues., Wed.-Thurs.  
**SPECIALS**  
5:00-8:00 P.M.  
1 Meat of your choice Reg. \$2.13  
2 Vegetables of your choice  
Rolls & Hush Puppies  
Tea or Coffee  
**\$1.70**  
Childs Plate 85¢  
(Special Good For Dining Room Only—No Take-Out)  
Try Our Homemade Cobblers & Puddings  
**TAKE OUT SERVICE**  
Ph. 688-6828  
**NANCE CAFETERIA**  
323 Blackwell St. Across From American Tobacco

**THE SPRIG**  
The SPRIG Salad Bar located in the Ballroom, West Campus Union Building is open Monday through Friday, 11:30 A.M.-1:45 A.M. Build your own salad, dip your own soup and cut your own bread. Fresh garden green salads, freshly baked deli-breads and hot tasty soups are more than just a meal it is an adventure in good eating.

**Oxbow music**  
Fine Acoustic Guitars From \$79.95-\$1500.00  
• Banjos • Fiddles  
• Mandolins • Dulcimers  
Where Strings are **always** 20-40% off and Flat Picks are still one Fat nickel.  
We have the most complete acoustic repair facilities in Durham, Chapel Hill, or Raleigh. We also repair and customize electric guitars.  
431 West Franklin Street  
Chapel Hill 929-2473  
Plenty of Free Parking





Antoine, the bagel man.

Photo by Russ Robins

## ...Bagel

Continued from page 6  
comrades for a cooling period of at least 30 minutes.

Relief is but short lived however, as rack by rack the goblets are plunged into a huge boiling kettle, a procedure necessary to produce a hard outer shell. The aspiring bagels are then transferred to the oven for the final and most important stage.

Cruel as it may sound, this process successfully transforms any batch of crude little dough balls into a scholarly collection of majestic bagels. Many, in fact, go even further to be blessed with onion, poppy-seed, or sesame-seed toppings. There is even a pumpernickel branch of the bagel family.

Joe Frankel, owner and manager of The Bagel Place, is proud of his operation. A pioneer of sorts, Frankel came to the South with his business in 1976, becoming the only fresh bagel producer in the region between Washington and Atlanta. He claims that title even

today.

Although the market for his product is increasing slowly, Frankel feels there still remains much room for growth, especially from the off-the-street customer.

Currently the majority of business is done on the wholesale level to food markers.

Because no preservatives are used in Bagel Place products, hundreds of bagels and pretzels must literally be thrown away each day. Frankel's philosophy on the matter, however, allows him to handle the problem: "Supplying the best is the only way. What I'm trying to do is get people to compare ours with the frozen kind."

In the future, Frankel would like to add freshly baked breads and Danish to his stock of New York cheesecakes (pecan, chocolate, and regular), and lox. Regardless, bagels and pretzels will remain as the chief commodity.



**Black Mountain Silver Company**  
Handwrought Sterling  
Silver & Gold Jewelry  
Tues-Sat 10-5, Wed 'til 6, closed Mon  
504 West Franklin, Upstairs  
Chapel Hill, North Carolina 27514  
967-8101

## THE AEGEAN SHOP

Specializing in Aesthetic  
Mediterranean Gifts



**HANDWOVEN**  
Skirts Dresses  
Blouses Bags & Rugs

**GREEK & PERSIAN**  
Jewelry Ceramics  
Icons Metalware

**Our New Location**  
114 Henderson St., Chapel Hill  
(Next to Not Just for Dancing)

**fool on the hill**

a different kind  
of card shop:  
museum reproduction  
postcards and notes

a different kind of  
gift shop:  
Asian and African crafts

in Chapel Hill, at  
Henderson & Rosemary



## Saddle and Fox

3211 Hillsborough Rd.

Your host, Charles Haynes, Duke '44,  
cordially invites you to enjoy our traditional

**FOOTBALL  
SMORGASBORD**  
after the game

The 50-foot candlelit table will feature hors  
d'oeuvres, gourmet specialties and  
champagne punch.

**Saturday,  
September 23**

Enjoy dining at  
"North Carolina's finest gourmet restaurant."

Open at 5:30 p.m.  
Reservations

383-5571

383-3238

All ABC Permits

We Honor  
Major Credit Cards



**WOMEN.  
YOU'RE  
EQUAL IN  
THE AIR  
FORCE.**

Women start out on the same footing as men in the Air Force ROTC. Women wear the same insignia and hold the same career positions as AFROTC, and so they should not be an Air Force officer.

And the same AFROTC scholarships can be earned as a woman. If you qualify, you can have your tuition, books, travel, and lab fees paid by the Air Force, and receive \$100 a month for other expenses. It helps free you to concentrate on your education. And that's important!

Air Force officers are respected for their training and education, and for a leader managing people, and complex systems. You'll be handled even after deployment, starting with your first job.

Be a part of the Air Force, and support us, to serve our country. Click into the AFROTC program at your campus. Be sure to ask about AFROTC scholarships. You may be helping yourself earn an air force from 100 miles.

**AIR FORCE**

**ROTC**

Gateway to a great way of life.

## Wine and Cheese Shop



The Wine and Cheese Shop is a place to gather in a unique atmosphere with music and candlelight. We offer cheeseboards featuring two selections of imported or domestic cheeses, freshly baked deli breads along with fresh colorful and tasty fruit to embellish your adventure in good taste. Wine is available by the glass or bottle, served at your table.

We are open nightly in the West Campus Ballroom from 5:00 p.m. to 7:00 p.m., Monday through Friday.



## Develops satellite system

## Engineering school graduate receives Emmy

By Jani Woolridge

Evans Wetmore, a graduate of the School of Engineering, was among a team of technicians at the Public Broadcasting System in Washington that received an Emmy Award for engineering last Tuesday.

Wetmore, a member of the Class of 1970, was one of the original incorporators of WDBS radio in Durham.

The National Academy of Television Arts and Sciences presented the award at a dinner at Radio City Music Hall in New York City to the PBS crew for implementation of its satellite transmissions system, Wetmore said in a recent telephone interview.

Wetmore, associate director of interconnection development engineering on the satellite project, called the award "a great thing."

"It's nice to be recognized for your work. The entire team appreciated it," he said.

Trudy Wilson, an aide in the national awards office of the National Academy, said candidates for the engineering award were nominated and screened by a committee of more than 20 engineers from the various networks.

The committee, chaired by Paul Witlik of the national awards office, examined all new developments in television engineering in the past year before

unanimously selecting the PBS satellite project.

Wittig could not be reached for comment on this year's selection.

Although all of the major television networks in the United States use satellites in transmitting some programs, particularly those overseas, PBS is the only network to use satellites for all of its domestic communication, Wetmore said.

ABC, NBC, and CBS all use special lines on the Bell system to send programs to local stations.

However, spokesmen at the three major networks said they are considering the satellite system. Two said they will eventually change systems.

John Batch, manager of traffic planning at ABC, said his network will convert to the satellite transmissions soon as it becomes economically feasible.

ABC is seeking to buy its own satellite, according to Batch. PBS leases a satellite from Western Union Telegraph, one of three companies in the nation with a license to own a satellite.

RCA Corp. and American Telephone and Telegraph Co. also own satellites.

Al Seeger, manager of the transmission center for CBS, said his network uses a combination of the Bell system and a satellite leased from

Western Union.

"Eventually I think all of our transmissions will be by satellite. It's less expensive and there's less equipment failure," Seeger said.

A spokesman in the switching central department at NBC said that network is considering a change but would not comment further.

According to Wetmore and spokesmen at other networks, the satellite system is preferable to the Bell system by four measurements: cost, reliability, flexibility, and capability.

Although there is an initial investment in setting up satellite transmissions, the long-run cost is much lower than the Bell system. Wetmore said the PBS satellite system, developed over a three and a half year period, will pay for itself in seven to ten years.

Satellites are also less vulnerable to breakdowns. The vast amount of equipment involved in Bell communications and rough terrestrial conditions result in frequent failure. Adverse weather does not affect satellite communications, according to Wetmore.

Satellites are also capable of sending more than one program simultaneously, unlike the Bell system. Simultaneous transmission allows the local station to air one program while taping others at the same time.

The current capacity of the PBS system is two programs, although that will soon be raised, Wetmore said.

In addition, the satellite system enables a network to easily add local stations to its programming by precluding wire hook-ups.

NOW APPEARING AT THE BLAIR HOUSE

LIVE!!

LOBSTER



The Blair House is proud to announce a new addition to our menu—live Lobster. Now in addition to our usual selection of the best steaks, prime rib, and freshest seafood, you can choose your own dinner from the only Lobster Tank in the area.

After the game or just any evening, we invite you to enjoy the finest food in a relaxing atmosphere.

BLAIR HOUSE  
Restaurant

3950 Chapel Hill Boulevard  
Durham, North Carolina  
(919) 489-1905  
Across from South Square

The  
No  
Name

PUB

1000 W. Main  
UPSTAIRS

The only MEXICAN FOOD in Durham!

Wide variety of bottled and draft beers, and wines

Complete Games Room — pinball and foosball

Starting September 4, we will open for lunch

Monday-Friday, at 11:30

Open Saturday &amp; Sunday at 1:00

NEW — Dance Floor

Private party room available — reasonable rates

Call 688-6041

N  
O  
N  
A  
M  
E  
P  
U  
B

## Jobs Available:

Jobs are available for students at the East Campus Dining Halls.  
(Work Study is optional).

11:00-2:00 Mondays through Sundays

11:00-1:00 Mondays through Sundays

12:15-2:00 Monday through Sundays

4:30-7:30 Monday through Sundays

A student may put in anywhere up to 19 hours a week. Please contact Jim Kelleher, Student Coordinator of the East Campus Dining Halls, at 684-2733, for further information.

Freewater is Part of the Duke University Union

Duke University Union  
FREEWATERproudly  
presents:

a special day



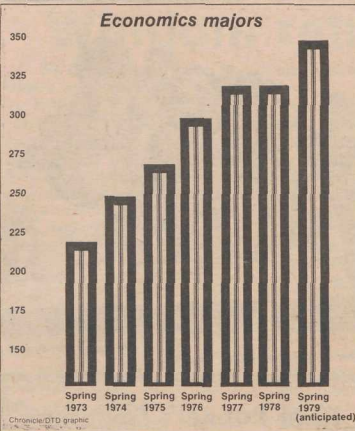
A SPECIAL DAY (1977, 110 mins.) Dir. by Ettore Scola. Stars Marcello Mastroianni and Sophia Loren. The story centers on the touching encounter between two unlikely people: a worn-out housewife and a homosexual ex-radio announcer. Mastroianni was nominated for the Oscar for his performance in this film. The movie is in Italian with English subtitles.

Friday, Sept. 22  
7, 9:30 and midnight

Admission only \$1.00  
At the Bio-Sci Auditorium

Freewater requests no smoking, eating or drinking in Bio-Sci Aud.





## Seeks majors' union

**By Mark H. Mirkin**  
The Duke Students Economics Association held its first meeting of the year Wednesday night under the direction of Carol Lynch, a senior transfer student majoring in economics.

The club, which at present is open to any Duke undergraduate student, seeks to become a majors' union, modelled after the management sciences and political sciences unions.

Organized last January by Janine Golding, a Duke Student who spent a year studying at Harvard, the club published the first edition of the *Duke Economic Review* in the spring. The *Review* contained four essays in the field of economics written by Duke undergraduates.

The *Review* made Duke the second university in the country to publish an economics journal on the undergraduate level, according to Helen "Ducky"

Clark, editorial manager.

"Harvard is the only other school to have one," she said.

Lynch, the club's president, explained to an audience of about twenty-five students that the aims of the club are to secure internships for economics students, publish the bi-annual *Review*, promote a guest speaker series, expand student communication with the economics faculty, and solidify the voice of the undergraduate economics majors here.

"The economics major, one of the most popular at Duke, has shown steady growth over the last few years," said Harry DeMik, associate registrar.

"This year's freshman class shows a strikingly similar increased orientation towards the business field," said Elizabeth Nathans, academic dean of freshmen.

With the abolition of the management sciences major next year, professors in the economics department anticipate even greater growth.

The club drew initial funding from a variety of sources including the economics department itself. In return it is conducting a survey of Duke graduates who earned degrees in economics, canvassing them for internship possibilities.

John Blackburn, acting economics department chairman, said that the faculty "appreciates and encourages the club and its admirable objectives." He said that it was "nice to have an official economics students organization to turn to for various committee memberships."

Two years ago, when the department sought to revise its curriculum, economics majors had to be individually sought after for their input, a situation Blackburn termed awkward.

At the meeting Wednesday night, Lynch stressed that the club was open to all students and new ideas. She said happy hours were being planned by the club to enable economics students to get together and help plan activities.

## The Oak Room Is Open

The Oak Room will be open on Saturday, September 23, for the pre-game and post-game dining Specials.

Pre-game Lunch served 11:00 a.m. to 1:30 p.m.

Post-game Dinner Special served 5:00 to 7:00 p.m.

Fresh Garden Green Salad Bar  
Fine U.S. Choice Steaks  
Crispy Brown Southern Fried Chicken  
Old-fashioned Home Cooked Biscuits  
An Assortment of Desserts

An excellent selection of wines, live entertainment and candlelight to set your mood for total enjoyment. Reservations are accepted for individuals or groups.

Call today  
The Oakroom 684-6784

**DUKE UNIVERSITY DINING HALLS**

v 10

The Steak House, located in the Faculty Dining Room next to the SPRIG, is open Sunday through Friday for dinner, 5:00 p.m.-7:00 p.m. Closed Saturday. The finest U.S. choice meats are prepared and served to order for your enjoyment. Complement your meal-by-candlelight, choose a good wine from our wine list.

## Recycle This Chronicle

## sam's quik shop

Open 7-12 daily

- Groceries
- Newstand
  - Out-of-town newspapers
  - Hundreds of magazines
- Beer
  - Domestic & Imported
  - Low Prices on 6 packs, cases, kegs
- Wine
  - One of the largest selections around
- Special Party Prices
  - On large beer or wine orders
- We Deliver

### THIS WEEK'S SPECIALS

Mateus	
ROSE	\$2.95/fifth
Duplin Wine Cellars	
NORTH CAROLINA'S OWN	\$2.38/fifth
PERRIER WATER	89¢/fifth

Erwin Rd. at East-West Expressway  
286-4110

## CAROLINA CLAY POTTERY

STUDIO OPEN HOUSE • 1-5 PM. SUNDAY SEPT 24

TAKE HWY. 98 EAST 10 MILES  $\frac{1}{2}$  TURN RIGHT ON HWY. 50 (TOWARD RALEIGH). GO 1 MILE. TURN LEFT ON MT. VERNON CH. RD. (S.R. 1844). STUDIO  $\frac{1}{2}$  M. ON LEFT.

## Hair Unlimited, Inc.

distinctive hair care since 1970

- All services for both men and women
- Also featuring a skin care specialist

haircuts \$10 to \$15  
hennas from \$20

perms from \$35  
hair painting from \$15

BY APPOINTMENT  
942-4388 or 942-4391

405 W. Franklin St.  
Chapel Hill

Mon. 1-5 p.m.  
Tues.-Fri. 9:30-6 p.m.  
Sat. 9:30-5 p.m.



## ...Mailboxes

Continued from page 1

"It causes us extra work," said Holleman "We hated to have to do it like that."

According to Holleman, "Every student who had requested a box has now been assigned one." As of September 14th, the waiting students could come to the post office, pay their rent, and obtain a box.

### Sharing discouraged

The recent post office box shortage has raised the question of whether or not boxes can be shared. Duke students have been discouraged from sharing a box with roommates or friends because of past claims of mail never received, misplaced checks and similar problems.

According to the U.S. Postal Manual, "An individual box holder or caller may receive through his

box or caller service mail addressed to himself, his family, relatives, or other persons residing in his household whether permanently or temporarily, if the mail is properly addressed to the box number."

When asked about the possibility of roommates sharing a box, Durham Postmaster Frank Copeland replied, "to my knowledge, if the mail was addressed to the correct box number, two people could share the same box provided they could show they were members of the same household."

However, Copeland added that Duke discourages sharing unless absolutely necessary, because "it clouds the investigation of lost or rifled mail."

"Most people prefer to have their own boxes, and we make a special effort to give them that," Copeland said.



The scene from behind the counter at Duke Station.

Photo by Rob Brandt

### First Baptist Church



## COLLEGE DEPARTMENT

invites

## DUKE STUDENTS

FELLOWSHIP

&

WORSHIP

transportation  
from

Duke Chapel 9:15 a.m.  
Hanes House 9:30 a.m.  
Southgate Dorm (East Campus)  
9:35 a.m.

Sunday School 9:45 a.m.  
Worship 11:00 a.m.

(Every Sunday)

## SIZZLER'S WEEKEND SPECIAL

Friday through Sunday only



## BRING THIS COUPON COMPLETE SIRLOIN STEAK DINNER

Includes Salad Bar and Beverage

a regular \$4.28 value  
you save \$1.29

only **\$2.99**

2011 Roxboro Rd.



CLIP THIS COUPON and come to the Sizzler for an excellent value. Baked potato or french fries and Sizzler toast, PLUS a trip to our Salad Bar and choice of coffee, tea, or soft drink. More than one person may use this coupon.

**LAST DAY: Sunday, September 24, 1978**

## River Runner's Emporium

Featuring:

- Polar Guard & Down Parkas & Vests
- Wool Sweaters, Mittens, Socks, Shirts
- Chamois Shirts • Other Winter Wear
- White Water & Backpacking Sales & Rentals

3160 Hillsborough Rd.  
Durham 383-2186  
Open 10-6, Weekdays  
10-6, Saturdays

211 E. Main St.  
Carrboro 907-9681  
Open 9-6, Mon.-Thurs.  
9-7, Fri.-Sat.

## YOU BUY 2½ WE'LL GIVE YOU 4

Only 3 days left to  
save up to 37½ %  
on season tickets to  
The North Carolina  
Symphony's  
Durham Season  
**4 Great Concerts**  
for the price of only 2½.

Fill out the order form  
below and send it to us,  
and we'll give you four  
concerts for the single ad-  
mission price of less than  
three concerts.



The North  
Carolina  
Symphony

Measure for Measure, it's  
music's finest.  
Subscribe now.

Eugene Istomin, Pianist  
Monday, September 25  
Page Auditorium

Martha Snoddy, Mezzo-Soprano  
Wednesday, December 6  
Page Auditorium

Michael & Margaret Ma, Violinists  
Monday, February 12  
Page Auditorium

Mary Lou Williams,  
Jazz Pianist/Composer  
Wednesday, April 18  
Duke Chapel

### Please reserve for the Durham Season:

Duke Student Season Tickets at \$6.30 each (with student I.D. at  
Adult Season Tickets at \$15 each Page Box Office only.)  
Student Season Tickets at \$9 each

Total Amount Enclosed \$

☐ Check enclosed

Charge to: ☐ American Express

☐ Master Charge

☐ Visa

Charge Account No.

Expiration Date

Signature (as it appears on charge card)

Name

Address

City

Phone: Day

Night

Please check one:

☐ I am a current Season Member

☐ I am not a current Season Member

### Clip and Mail to:

Box Office Manager, North Carolina Symphony

P.O. Box 28026, Raleigh, N.C. 27611, Telephone (919) 733-2750



# Windom returns

By Cathy Peterson

Cheers and beers will welcome actor William Windom today when he begins his weekend activities at the Cambridge Inn's Friday happy hour.

Windom, best known for his Emmy Award Winning lead role in NBC's 1969-70 series *My World...And Welcome to It*, is returning to Duke for his second masterful portrayal of the immortal American humorist, James Thurber.

Windom brings Thurber to life on stage. As storyteller, he captures the essence of Thurber's tales which turn everyday situations into marvelous comedy. As actor, he brightens up Thurber's charm and wit by reliving nostalgic memories and characters with fresh insight and appeal.

Windom's words and gestures illuminate Thurber's stories so successfully that you don't miss the drawings that so famously illustrate his works, according to Alfred

Frankenstein of the *San Francisco Chronicle*.

Duke seniors who attended Windom's first performance of Thurber in the 1975-76 academic year remember his presentation of the series of tragedies derived from a satire on French tourist guide books, the parodies of Aesop's fables and the climatic depiction of Walter Mitty and his grandiose dreams.

But even more memorable is the personal interest Windom takes in Duke students and activities. Three years ago, he spent until 4 a.m. drinking at a fraternity party, said Caroline Craig, advertising chairwoman for the Union's Performing Arts Committee.

This year, at Windom's request, Fubar dorm, rather than a hotel, will provide a room for his overnight stay.

He also plans to cheer the Blue Devils on to victory against the University of South Carolina Gamecocks this Saturday, according to Craig.



William Windom at Page tonight.

Courtesy of Kolmar-Luth Entertainment, Inc.

## JOBS AVAILABLE to Duke Students

**West Campus Dining Halls**  
**All shifts 10-15 hrs. per week**

**Contact: Lynn Elia**  
**684-3621**



THIS FALL'S  
FASHION  
FIND...

100% wool,  
shawl collar,  
outerwear  
sweater.

**\$40.**

Steak House

Hours:  
10-9 M-F  
10-6 Sat.

CARR MILL

# \$1.00 OFF

## any size pizza with this coupon

**Good thru 9/30/78 at  
any Peppi's location**

2425 Guess Rd.  
3906 N. Duke St.  
3648 Chapel Hill Blvd.  
208 W. Franklin St. - Chapel Hill  
15-501 By-Pass - Chapel Hill



# Peppi's

**GO BLUE DEVILS!**

## A "Name That Place" Contest

We need your help in selecting a suitable name for the Wine and Cheese and Steak Shop located in the West Campus Ballroom.

In the Wine and Cheese Shop we offer a great selection of imported and domestic cheeses, served on boards and embellished with fresh and colorful fruit.

The Steak Shop offers a complete meal — including fresh green garden salads, baked potato, Texas toast, and beverages, served with the finest U.S. choice meats. An excellent selection of house and bottle wines is available for service at your table, by candlelight. Live entertainment is provided each night to set the mood for total enjoyment. A truly wonderful place to gather and enjoy the company of your friends.

Suggestions boxes will be placed for your convenience. Please help us "name that place".

A prize will be given to the person who suggests the name selected.

**Drop your suggestions in the Name Contest box today.**

(Fold and tear on broken line—drop your selection in Contest box, or give it to a waitperson.)

Name \_\_\_\_\_

Phone Number \_\_\_\_\_

Suggestion (with short explanation) \_\_\_\_\_

\_\_\_\_\_  
\_\_\_\_\_  
\_\_\_\_\_



Hi there! Today is Friday, September 22, 1978. Four hundred and twenty-two years ago today the first jury composed entirely of women heard the case of Judith Catchpole charged with murdering her child. The verdict: not guilty.

On this day 29 years ago the Soviet Union exploded its first atomic bomb, four short years after Hiroshima. The race was on.

And, in 1908 on this day, The New York Tribune commented that a Bostonian in a year eats more than two and five sevenths of his own height in (potted) baked beans and more than his own weight."

Hoping all your explosions are happy ones, this is The Chronicle, prepared for detonation. Beans: 684-2663. Bombs: 684-3811.

## Egypt is not alone

Joshua Agrons

The recently concluded Camp David summit conference resulted in significant progress toward a comprehensive peace settlement in the Middle-East. It provided for the withdrawal of Israeli troops from the Sinai, the return of that peninsula to Egypt, and for some type of self-determination for the Palestinians in the West Bank area. The agreement that has just been signed, however, represents movement toward an end to the conflict, and not a resolution of Arab-Israeli antagonism.

One bone of contention may be Israeli settlement that dot the Golan Heights and the West Bank of the Jordan River. Although the Knesset will probably relinquish the Sinai outposts, the Israeli parliament may not be so agreeable where its other colonies are concerned. By giving up the Sinai Israel receives a US bonus payment of \$1 billion. The payment will take the form of two new sophisticated airbases to be built in the Negev desert as replacements for the ones that the Israelis give up in the Sinai. Such sweeteners make concessions infinitely more palatable, though State Department analysts must be wondering what to offer for the return of the other occupied territories.

While it is certainly true that the Egyptians hold the key to war, many other actors besides Mr. Sadat control the door to peace. It is not possible for the Arabs to carry on an armed conflict with Israel on only one front. The Syrians are aware of this, thus their vitriolic denunciation of the entire accord. An agreement may eliminate the possibility of war in the immediate future, but without a

solution to the Palestinian question the best that can be hoped for is a festering peace. Millions of Palestinians have been living as refugees in Lebanon, Syria, and Jordan. The Saudis recognize Palestinian demands for a homeland as legitimate, and so long as the bank supports the cause it can remain solvent, viable, and explosive.

At the same time, it is easy to understand Israeli revulsion at the thought of negotiating with the Palestine Liberation Organization (PLO). The ragtag band of fanatical terrorists has slaughtered innocent people all over the world. Events such as those at Qiryat Shemona and Maalot are difficult to forget. Nevertheless real and lasting peace is not possible until the justified claims of the Palestinian people are satisfied.

In the final analysis it is the Saudis who must be courted. Their support is absolutely essential to any settlement of tensions in the area. Saudi Arabia is a powerful moderating influence on the more radical factions in Syria and the PLO. Saudi money is vital to Jordanian vitality, and King Hussein can not be expected to negotiate with Israel without tacit Saudi support. If Secretary Vance can win them over during his current trip to the area, it will free King Hussein's hand and make it possible to begin negotiating the fate of the West Bank. Disaster in Saudi Arabia could spell disaster for the peace process. Mr. Vance must succeed, or the long term chances for peace may be seriously threatened.

Joshua Agrons is a senior in Trinity College.

## Everybody's guide to

The following column is a part of The Chronicle's effort to familiarize the nerds and the freshmen with the customs and the institutions that are most prevalent on this campus.

No, obnoxiousness is not a social vice as it is frequently depicted. No cigar (obnoxious cigar, of course). Obnoxiousness is an art; a performing art, if I may. Tailored to the audience's distaste and skillfully performed, obnoxiousness turns even the most friendly humanoids into belicose socially unacceptable creatures. As any art, obnoxiousness requires an immense amount of creativity, or as one practitioner put it, "You just can't be revolting unless your heart is in it." However, as you may have learned by now, a heart may at times be too much to ask for. Therefore the following is merely a step-by-step approach to what the author has found to be the most outstanding techniques of obnoxious and antisocial behavior.

STEP ONE—DISPLAY THE MERIT BADGES

Spot a victim. Approach him or her (depending on his/her sex). Start a conversation in an innocent and inconspicuous manner. (The author has found that the question, "Aren't you in my Econ class?" always draws a response. Then in a sudden move tell your collocutor your grade point average. (If your GPA is not sufficiently high to provoke disgust, increase it.) Now move on to your past achievements. Tell your victim about your membership in the American

Honor Society; then indicate your affiliation with the DAR and the Young Republicans. For the final touch, add that you were the President of the Outing Club in the Thomas Jefferson High School during your junior year. Don't forget to mention that this was the first time in history of Thomas Jefferson High that this prestigious position was held by a junior. If your victim is still with you, move on to step two.

STEP TWO—INTRODUCTION

None. By all means try to avoid introducing yourself. Remember that to be most effective you must pass for an outstanding individual unblended out of the bland and faceless crowd.

If an introduction is requested, confront the request with a "Do you care?"

In the unlikely case that the answer is "Yes," inquire why.

If the victim supplies a satisfactory reason for their curiosity, cut off the conversation by saying, "Ask not and you shall not be asked."

By now you have established yourself as a creature of higher intelligence adorned with the lavres of outstanding achievement. Excellent!!! Move on to step three.

STEP THREE—THE ALIENATION REPORT

The purpose of step three is to demonstrate that your extraordinary intelligence makes you unable to cope with the banality of this primitive and unforgiving world. To do so, first establish yourself as a loner. To be

## Prize winners and ou

### Nobel

To the edit council:

Michael J. Peterson, whose intemperate letter was published in Thursday's Chronicle, is entitled to his opinions. However, his statement that Duke "has not produced a single Nobel prize winner, or Pulitzer, or any individual of note," is simply not true. Physicist Charles H. Townes (A.M.,

'37) won a Nobel Prize in 1964 for his work in quantum electronics. Pulitzer

### LETTERS

Prize? Does the name William C. Styron, '47 (fiction, 1968: *The Confessions of Nat Turner*), ring a bell? One can add the name of Louis I. Jaffe, '11, whose anti-lynching editorial in the *Norfolk Virginian-Pilot* won a Pulitzer in 1929. Individuals of note? The list would be long, but why not begin with Secretary of Commerce Juanita M. Kreps (A.M., '44, Ph.D., '48), who, by the way, the second Duke alumnus to hold that post (Daniel C. Roper, '88, was the first). In short, Duke University has probably produced as many prominent alumni as any school of its size and reputation.

Mark C. Stauter  
Assistant University Archivist

### CANA'S OF THE AGE'S

THE AGE, TODAY PRETTY IS IN FULL SWING AGAIN ENTIRE

FORD! I CAME HERE TO WARN YOU! SOME GUYS IN MY PRAT ARE PLANNING TO DESTROY THIS PARTY!!

WHEE! GOIN' ON, KIDN?

WHEN IN THE AGE'S DO

ABOUT 20 OF 'EM ARE GETTING READY TO COME OVER NOW! THEY'RE LOOKIN' PRETTY DRUNK AND VIOLENT!

THANKS FOR THE INFO. WE'LL BE READY!

UNION, LEADER OF THE AGE'S RAID ON THE AGE TOS-A-PARTY

HEY, EVERYBODY! WHO IN TH' MAIL IS REDDY T? GO KICK SOME MONKEY HAIDS IN? AH SHORE IS!!

HEY Chron you are CRAZY!

TO BE CONTINUED

TO BE CONTINUED

TO BE CONTINUED

TO BE CONTINUED

TO BE CONTINUED

TO BE CONTINUED

TO BE CONTINUED

TO BE CONTINUED

TO BE CONTINUED

TO BE CONTINUED

TO BE CONTINUED

TO BE CONTINUED

TO BE CONTINUED

TO BE CONTINUED

TO BE CONTINUED

TO BE CONTINUED

TO BE CONTINUED



# obnoxious behavior

Paul Goldberg

most effective, mention that neither your friends nor your family "understands" you. Being "misunderstood" has always been considered an excellent excuse for obnoxious behavior.

Now move on to academics. This is the toughest task of all since there is a definite overlap between scholarship and obnoxiousness. Yesterday, however, I had heard a person X say, "I never take notes. The professors are generally too median student-oriented, and therefore they bring me down to a much lower level. I just can't relate to that, you see." Bravo!!! This comment is undoubtedly obnoxiousness at its putrid best. If applied, it is guaranteed to produce fast and noticeable results.

It is also helpful to try to pass for a misunderstood poet. To accomplish this, subject your victim to your very own poem with a catchy little title like "Darkness, Depression, Hatred, and Death." The poem must not rhyme, and should contain at least three minutes worth of gross imagery.

Unorthodox political views may also enhance your image. Here you have a choice between the Extreme Left (Maoism and Trotskyism are the two favorites), and what may be called the Alienated Intellectual Semi-Extreme Ivory Tower Right. If you choose the latter, spice the lengthy elaboration of your political views with butchered quotations from Machiavelli and/or Nietzsche. If you can't think of any quotations, make

up a few.

## STEP FOUR—VICE CODE

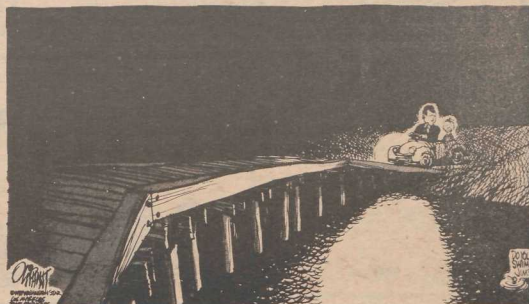
To attain the paramount level of obnoxiousness, you absolutely must smoke. Cheap and obnoxious cigars are perfect for the job. However, as one practitioner of this art noted, "When I smoke these stink sticks, the smell drives people away before I do."

Now you are all set. You have learned the ABC of obnoxious behavior. I taught you all I have been exposed to. Now it's all in your hands. As they say, "You can lead a horse to water...."

Wait a minute...

Aren't you in my Econ class?

Paul Goldberg is a sophomore in Trinity College.



"DON'T WORRY ABOUT MY DRIVING, JIMMY—I KNOW MY WAY AROUND HERE!"

## Hallowed Ground

Linda Keslar

Harold and I strolled down the pathway towards Gross Chem.

"Hey, what's that?" Harold pointed at a slab of blue visible through some bushes in the distance.

We walked over to the foliage. "Hey, it's a sign," Harold exclaimed and pulled some weeds away from the white lettering. "Site of the Future University Center," he read.

We both looked at the trees around us. "Where is it?" Harold asked.

I pointed to a large clearing on our left. "I think its going to be over there."

Harold shook his head. "Looks like a new parking lot to me," and pointed to the right. "I don't suppose that green caboose is the beginning of it, is it?"

"That's a trailer Harold, and its an office, I guess," I replied. "There's some problems about the future funding of the building, you know."

"Since about five years ago, right?" That was Maxim, who has joined us. "My father donated some money to the building of the Univ. Center, and there's still nothing even tangible about the building, except a few fallen trees, and a couple of blueprints."

Harold was basically uninformed. "What's in the blueprints?"

"Oh, there's supposed to be a lot of things in the Center, like a large student bookstore, which is definitely needed. The one in the Union is about the size of a closet."

"Well, we could always ask the Iron Dukes to build us another stadium to keep books in," Harold suggested.

"Right, Harold. Also, there's supposed to be a restaurant built called the Rathskeller, which would be great to have." Of course, who knows what may really end up in the building, since all kinds of revisions might have to be made."

"Well, we could do without the

restaurant — just keep the CI, and have a couple of hot dog vendors and Chinese carryout trucks outside the Univ. Center — if its good enough for Capital Hill, its good enough for us," Harold explained.

"What else?"

"Well, there's supposed to be some separate banquet rooms and a movie theater," Maxim began.

"So we'll combine the two — just require students to bring folding stools into a huge empty room with a white screen. Tables can be set up in there too," Harold stated enthusiastically. "That should cut some costs."

"Well, they're thinking of cutting out the theaters anyway," I said.

"Yeah, we can always paint one side of the building white and start an outdoor drive-in," Maxim retorted. And cut freshman enrollment to two hundred so that Branson can fit our needs."

"Seriously, you guys," Harold was getting into this. "What else?"

"Well, there's supposed to be a games room," Maxim started. "I guess for pool tables and pin pong tables."

"Ah, just forget them," said Harold the economist. "So we get a back gammon set, monopoly, and splurge on a fustball table."

Maxim groaned. "Should add to the prestige of Duke. Okay, Harold, what about the people mover?"

"Maxim, that's for the hospital!" I exclaimed. "We get an arched path-

way over Tower Drive."

"Well, forget that," Harold replied. "Another dirt pathway won't hurt us."

"How about all the offices for student activities that are supposed to be in the Center?" Maxim posed.

"So, why give them separate offices? Why can't Duke Republicans and PIRG share an office? ASDU and Duke Duchesses, IFC and PISCES? It'd promote better communication between student bureaucrats."

Maxim was shaking his head. "Yeah, and to cut electricity costs, students could bring flashlights after dark. Harold, this is getting us nowhere. Who knows. Maybe that modern architecture might not fit in anyway."

"So, we just don't build it," Harold concluded. "What's another huge building on campus, centrally located, that we could remodel, for a small fee to fit our needs?"

"Nothing Harold, that's the problem," Maxim sounded disgusted. "Hey, what time is it?"

Music filled our ears. "Must be five — the bells are ringing," I said as we all looked up towards the Chapel.

A smile spread slowly over Harold's face.

Maxim and I looked at each other in horror. "Harold, not the Chapel!" Maxim exclaimed.

Linda Keslar is a senior in Trinity College.

## outlaws

### Ignoble

To the edit council:  
Re: Outlaw's list

While waiting in line early Monday morning we were involved in a confrontation concerned the validity of the Kenny Loggins-Outlaws concert list. The merits of the list versus the line are actually irrelevant. A top position in the line does not guarantee a correspondingly good seat at the concert. Apparently, the best seats are already reserved — for Duke University Union Major Attractions Committee members!

Why doesn't everybody adhere to the Union policy of buying tickets on a first come-first serve basis?

Sincerely yours,  
Richard Shafer '80  
Steve Mix '80, Matthews Estes '80  
P.S. — Just who is Kenny Loggins?  
"Shaf" Gregory '80  
Bill Price '80  
Otto Moore '80

"I'd rather laugh with the sinners  
than cry with the saints."

—Billy Joel

Congratulations and an electric carrot slicer go to Ginger (for cool control in a crisis), Doug (for keeping under control), Mazur and Turlington (for getting out of control), Debbie, Mary Ott (rookie wire editor), Rob Brandt (great pictures), Beth and Amy and Jan (for putting up with it all), (X our typesetters and layout person are getting tired of having to put up with it all. Some, yes. All, no.) and the Post's Bob (we've got a ways to go, don't we?). Laughing with my fellow sinners, and ready to laugh some more this weekend, (H.B., D.D.), (What is this, some kind of code?) this is bozo night editor E.J. (Early Jaundice) Flynn, reminding you that a penny saved is a cent.



## TURNTABLES



PL 512

**\$147<sup>74</sup>**

Auto-return, direct-drive turntable features accurate DC servo motor, quick start operation, wow and flutter: 0.03% (WRMS), s/n ratio: 73dB (Din B). Superb tonal quality and anti-howl characteristics. Comes in metal-like vinyl cabinet. 9491592LX14774... \$195.00



PL 512

**\$79<sup>74</sup>**

Manual belt-drive turntable with 4-pole synchronous motor, outstanding wow... \$100.00



PL 514

**\$98<sup>96</sup>**

Auto-return, belt-drive turntable, wow and flutter: 0.055% (WRMS), 4-pole synchronous motor, static balanced S-shaped pipe arm. 952206LX19896... \$125.00



PL 516

**\$123<sup>62</sup>**

Auto-return, belt-drive turntable with precision FG servo DC motor, wow and flutter: 0.045% (WRMS), static balanced S-shaped pipe arm. 952214LX12362... \$150.00



PL 540

**\$169<sup>72</sup>**

Auto-return, direct-drive turntable with exacting quartz PLL DC motor, wow and flutter: 0.025% (WRMS), s/n Ratio: 73dB (Din B), pick meter. 958865LX16972... \$235.00



PL 560

**\$218<sup>93</sup>**

Fully automatic, direct-drive turntable with quartz PLL DC motor, wow and flutter: 0.025% (WRMS), s/n Ratio: 73dB (Din B), pick meter. 958867LX21893... \$295.00

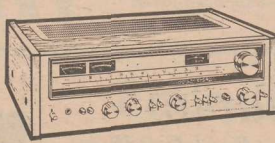


PL 630

**\$298<sup>87</sup>**

Fully automatic, direct-drive turntable with quartz PLL DC motor, s/n ratio: 75dB (Din B), wow and flutter: 1 E.D. function indicators. 959073LX29887... \$400.00

## RECEIVERS



SX 780

**\$248<sup>86</sup>**

FM/AM/FM stereo receiver, DC power amplification and superb FM/Phono EQ at a practical price. Features 45 watts per channel, RMS at 8 ohms, 20-20,000 Hz, with no more than 0.05% total harmonic distortion, FM muting, tape monitor, frequency meter, FM s/n ratio: 80dB (Mono), 72dB (Stereo). 959022LX24886... \$350.00



SX 450

**\$134<sup>74</sup>**

15 watts per channel, RMS at 8 ohms, 20-20,000 Hz, 0.5% total harmonic distortion. Excellent value. 952884LX13474... \$175.00



SX 580

**\$169<sup>47</sup>**

20 watts per channel, RMS at 8 ohms, 0.3% total harmonic distortion. Power meters. 959066LX16947... \$225.00



SX 680

**\$198<sup>94</sup>**

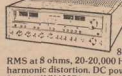
30 watts per channel, RMS at 8 ohms, 0.1% total harmonic distortion. Power meters. 959014LX19894... \$275.00



SX 680

**\$328<sup>87</sup>**

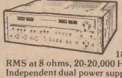
60 watts per channel, RMS at 8 ohms, 20-20,000 Hz, 0.05% total harmonic distortion. DC power, power meters. 959030LX32887... \$450.00



SX 980

**\$428<sup>74</sup>**

80 watts per channel, RMS at 8 ohms, 20-20,000 Hz, 0.05% total harmonic distortion. DC power, power meters. 946524LX42874... \$600.00



SX 1280

**\$678<sup>86</sup>**

185 watts per channel, RMS at 8 ohms, 20-20,000 Hz, 0.03% THD. Independent dual power supplies, DC power, power meters. 946532LX67886... \$900.00

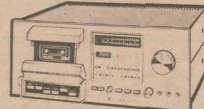
# PIONEER

# New for 1979

## At Low BEST Prices



## TAPE DECKS



CTF 500

**\$368<sup>94</sup>**

3-head "microprocessor" cassette deck provides exceptionally accurate professional two-meter performance with DC servo control and Dolby noise reduction. Features hard sendout heads, fluorescent peak level indication with peak hold function, electronic tape counter and feather touch switch control. Automatic memory stop play/wind/end repeat. Outstanding features and value. 959065LX36894... \$500.00



CTF 500

**\$134<sup>93</sup>**

DC servo motor, wow/flutter: 0.05% (WRMS), s/n ratio: 64dB (Din B), frequency response: 20-16,000 Hz, auto-erase. 959066LX13493... \$175.00



CTF 422

**\$169<sup>87</sup>**

Electronically-controlled DC motor, wow/flutter: 0.08% (WRMS), s/n ratio: 62dB (Din B), frequency response: 20-16,000 Hz. 945251LX16987... \$225.00



CTF 622

**\$219<sup>47</sup>**

Front access with electronically controlled DC motor, wow/flutter: 0.08% (WRMS), s/n ratio: 62dB (Din B), frequency response: 20-16,000 Hz. 945251LX21947... \$300.00



CTF 700

**\$278<sup>76</sup>**

3-meter deck includes a dynamic level meter, DC motor, wow/flutter: 0.05% (WRMS), s/n ratio: 64dB (Din B), 25-17,000 Hz. 959057LX27876... \$325.00



CTF 1000

**\$449<sup>63</sup>**

2-meter, 3-head deluxe deck with wow/flutter: 0.05% (WRMS), s/n ratio: 64dB (Din B), 20-19,000 Hz. 945246LX44963... \$600.00



RT 707

**\$468<sup>84</sup>**

Real tape deck with 3-motor servo AC drive, 2 speeds, 6 heads, 2-way bias, non-reverse playback. 945251LX46884... \$525.00



TX 5000II

**\$109<sup>47</sup>**

Tuner features PLL, multiple circuitry, muting, and a stereo indicator light, and remote meter for easy station selection. 952472LX10947... \$150.00



SA 5500II

**\$109<sup>47</sup>**

Amplifier delivers 15 watts per channel at 8 ohms, 20-20,000 Hz, and no more than 0.5% total harmonic distortion. 945246LX10947... \$150.00



SE 205

**\$18<sup>96</sup>**

Headphones with rich bass response. Sealed speaker, 20-20,000 Hz. 952321LX18996... \$30.00



SE 405

**\$32<sup>47</sup>**

Headphones with volume level controls attached to both left and right channels, 20-20,000 Hz. 952321LX32474... \$50.00



SE 700

**\$64<sup>43</sup>**

Headphones with high-polymer film driver, wide frequency: 20-20,000 Hz. 952321LX64434... \$90.00



SG 9500

**\$229<sup>93</sup>**

Graphic Equalizer controls your frequency response, 10 sliders, 20-20,000 Hz, and right channels. 946711LX22993... \$300.00



TV 9500

**\$199<sup>72</sup>**

VHF/UHF TV audio tuner provides Hi-Fi sound on all TV channels, VHF tuning with LED channel indicator, VHF selector and fine tuner control. 946709LX19972... \$250.00

## SPEAKERS



HPM 100

**\$199<sup>44</sup>**

Each



Project 80

**\$119<sup>64</sup>**

Pair

2-way speaker with 8" cone woofer, 1 7/8" cone tweeter, handles up to 20 watts, 20-20,000 Hz, 16:1 high. 958875LX11964... Pair \$198.00



Project 120

**\$94<sup>76</sup>**

Each

2-way speaker with 10" cone woofer, 5" cone midrange, 1 7/8" cone tweeter, handles up to 40 watts, 20-20,000 Hz, 25:1 high. 958887LX94767... Each \$145.00



HPM 40

**\$199<sup>44</sup>**

Each

3-way speaker handles up to 40 watts per channel at 8 ohms, with 18" woofer, 1 1/2" tweeter and super tweeter. 952321LX19944... Each \$350.00



CS 66G

**\$109<sup>83</sup>**

Each

3-way speaker with 10" woofer, 6 1/2" midrange and 3" cone tweeter, handles up to 40 watts per channel at 8 ohms, 21.5:1 high. 952321LX10983... Each \$175.00



HPM 60

**\$168<sup>87</sup>**

Each

4-way speaker handles up to 60 watts per channel at 8 ohms, 16:1 woofer, 1 1/2" tweeter, 24" high. 952321LX16887... Each \$250.00



CS 99A

**\$218<sup>87</sup>**

Each

2-way speaker features 12" woofer, 5" midrange, 4" midrange, tweeter and 1 1/2" super tweeter, handles up to 100 watts at 8 ohms, 24:1 high. 952321LX21887... Each \$375.00



HPM 150

**\$398<sup>87</sup>**

Each

4-way speaker handles up to 200 watts at 8 ohms, 15:1 woofer, 4" midrange, 1 1/2" cone tweeter, super tweeter, 28 1/2" high. 947176LX39887... Each \$500.00

## ACCESSORIES

MANY MORE HIGH FIDELITY COMPONENTS IN THE SHOWROOM

3438 Hillsborough Road  
Beside Holiday Inn West  
383-6621



# Brutality: helmets, drugs, and economics

*Editor's note: This is the third and final segment of a series exploring the issues raised by a recent Sports Illustrated piece on brutality in football from the perspective of the game at Duke. Today's article deals with the use of the helmet, the abuse of drugs, football medicine practices, and the forces that promote brutality in football.*

By Jim Mazur and  
David Trevaskis

Sage political observers have broadly hinted that many of the problems experienced by our thirty-eighth president while in office were directly attributable to his days of playing football without a helmet.

Gerald Ford actually did wear a helmet, albeit a leather one without a face mask. It is just that compared to the modern helmet, an elaborately engineered device designed to protect the head against great stress, Ford's leather cap offered no protection.

The helmet is so much a part of the game today that even those people far removed from football understand the implication of the comment that Ford played without a helmet. With nothing to protect his head, some damage must have been done.

Whatever the merits of that theory, the game, like the helmet, has changed considerably since Ford's playing days at Michigan. An important element of that change is the evolution of blocking and tackling techniques involving the head.

John Underwood, author of the *SI* series, views the use of the head as the major technical reason brutality is a problem confronting football. He is disturbed by the possibility of injury both to the person delivering a head blow and to the person receiving it.

## Eliminate helmet?

He feels that the helmet is being used as a weapon and that the rules restricting its use in that manner are woefully inadequate. His suggested remedy: do away

with the helmet and all head hits.

Duke football Coach Mike McGee disagreed strongly with the Underwood's criticism of the helmet and the use of the head. He maintained that head techniques are an important part of the game which are safe if executed properly.

Most of the Duke players agreed with their coach. "If you took away the helmet you would alter the nature of the game," offensive lineman Ken Staudinger explained. "There's no way I can move the guy I'm playing against without putting my head into him."

Although he wears a collar while playing to protect "one of the most messed up necks you'll find," the tackle also said that it is perfectly safe to use the head "if you are taught to execute the proper technique. Most of the injuries that occur are when a guy gets careless and puts his head down."

Carl McGee, Duke's All-American linebacker candidate, does not want to see the helmet hit legislated out of football either. "I like to hit with my head," the senior tri-captain said.

It must be emphasized that both coach and players are referring to legal hits using the head. Illegal hits are a different matter.

"I would like to see a deemphasis of using the head," Mashore admitted. "However, there's no reason to get rid of helmets and face guards. The rules are there. If the officials called the rules more closely most of the problems would be alleviated."

Indeed, listening to ACC supervisor of officials Norvall Neve discuss the rules governing head hits, it does seem that most of the problems would disappear if the officials called the rules more closely.

## Rule of thumb

"The rule of thumb," Neve explained, "is that if you are attacking a moving player, the use of the head is legal. When a runner is held up or a pass receiver is in

the air, then any head hit is illegal. If a player is on the ground, hitting him with the helmet constitutes a spear."

Still, Neve said more has to be done than just have the officials call the existing rules. He commented that padding the outside of the helmet would be of some help, but that the problem of brutal head hits can not be completely resolved until coaches stop teaching illegal techniques.

Coach McGee took great exception to any implication that coaches generally taught player's to use the helmet to deliver harmful blows. Admitting that there are a few exceptions, he maintained that the great majority of coaches adhere to both the spirit and the letter of the laws about head hits.

Duke players very forcefully made it clear that they felt no such teaching of illegal and improper techniques occurs at the University. "The coaches here and at my high school are ethical," Mashore said. "There is no excuse for a coach to teach illegal play."

Although defensive back George Gawdun's early experience differed from Mashore's, he concurred in the observation that Duke plays clean football.

## Helmet weaponry

"I was brought up where the helmet was taught to be a weapon. It was not to be used for protection. In high school our coach told us to tackle with the helmet. Here at Duke, tackling with the chest is emphasized."

The consensus among Duke football participants seems to be against any suggestion like Underwood put forth to remove the helmet and head hits from the game.

Most said the problem is not as severe as portrayed in the *SI* article. The most radical suggestions anyone seemed willing to offer were those of Coach McGee. McGee said he would be in favor of both padding the outside of the helmet to soften blows and handing out

Continued on page 16

## THE COLLEGE SHOP

### Let's Get Acquainted

Come in and see our great selection of women's fall fashions.

Present Duke I.D. and receive a 10% discount on any purchase of regularly priced merchandise.

(Expires Sept. 30, 1978)



## THE COLLEGE SHOP

1105 W. Main St. Durham



## buy Steak by the ounce

We specialize in Ribeye and N.Y. Strip Steaks cooked to perfection over live charcoal.

Gourmet Salad Bar  
Wider Selection

2818 Chapel Hill Rd.  
(5 minutes from Duke)  
489-4948

Dinner: Mon.-Sat. 6:00-10:30

All ABC Permits - BAC - MC - Am. Ex. Accepted

## Quadrangle Pictures Presents...

An experience in terror and suspense.

# THE FURY



© 1978 20th CENTURY-FOX COLOR BY DeLUXE



Page Auditorium  
Admission \$1.00

Sat. & Sun. Sept. 23-24  
7:00 and 9:15 p.m.

## ATTENTION CLUBS: IF YOU WANT MONEY

ASDU Budget Commission  
Will Meet:

Sept. 25	3-5:30 p.m.
Sept. 27	7-9:30 p.m.
Oct. 2	3-5:30 p.m.
Oct. 4	7-9:30 p.m.

You **must** sign-up for a time-slot.

Sign-up sheets outside ASDU office,  
104 Union



## ...Brutality

Continued from page 15

more player disqualifications for those who use the helmet illegally.

Duke players and coaches also said that another of Underwood's highlighted problems, that of drug use to enhance player performance, was given an overblown treatment in the brutality series.

"I have never seen drugs being taken here and I personally don't use any drugs," said Mashore. Other players said that drugs use occurs at the college level but to a far lesser degree than in the pros.

"I wouldn't say drugs are non-existent [in college ball], but to my knowledge, it is not prevalent at this level," commented wide receiver Jeff Coomer.

### Minimal use

According to John Gutekunst, assistant coach, the percentage of college players using drugs to better their playing performance is small when compared to the total number of players. "I would estimate that only five percent of the players in college football use drugs for playing purposes," said Gutekunst. "I am talking about a player taking a drug on the day of the game to perform better."

Gutekunst feels that if a college football program promotes this type of drug use, "they should be run off the face of the earth." While he knows of no such drug abusing program, he admits that there might be a drug problem which is unknown to the coach and the administrators.

"Perhaps at some school there is little communication between the training room and the administration. The trainer might be able to dispense these player-performance drugs without the knowledge of the coach and the administration," Gutekunst added that such a situation does not exist at Duke.

### Sports medicine

The possibility that someone might dispense amphetamines to get a player "up" for a game is merely one aspect of the larger question of sports medicine practices and how they relate to the football brutality issue.

In theory, sports medicine is designed both to improve player performance naturally through such means as improved training techniques and to protect the performing athlete to the fullest extent of modern science and medicine.

The recent Duke-Georgia Tech gridiron contest showed the positive aspects of sports medicine. The players were able to perform safely despite the great heat because they were able to immediately replace both the fluids and the electrolytes their bodies lost by drinking a specially prepared solution that research has proven effective.

The negative side of sports medicine revolves around the issue of allowing injured athletes to play hurt. This problem is not merely a football issue, as the recent controversy involving Portland Trailblazer center Bill Walton and the medical practices of his team attests. Nonetheless, the issue of playing hurt seems most relevant to football, a game in which there is a strong ethic to perform despite injuries.

"There is no pressure to play hurt at Duke," commented Mashore. "Some people do but it is strictly a personal thing. A lot of pressure comes when there is a big game because the player may want to play."

This internal pressure may make a player play while hurt, making a greater injury possible. Gutekunst said the staff at Duke tries to avoid letting such a situation develop.

"I sometimes think that the importance placed on playing a certain game, whether it is produced by the media, coaches, peer pressure or whatever, may be too much internal pressure for an 18-22 year-old to handle," the assistant noted. "He probably isn't mature or experienced enough to make an objective decision. At Duke we try to make the decision for him."

The recent injury to quarterback Mike Dunn, which sidelined him against Georgia Tech, appears to be a good example of the views concerning playing hurt at Duke. Dunn wanted very much to play, but Coach McGee said he would not play if there was "any chance he might be permanently harmed."

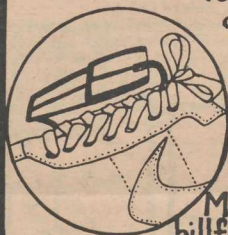
### Economic pressures

Where coaches fail to fulfill this responsibility, McGee said outside pressures are usually tremendous. "The SI article was overdone," the coach said. "Still, when it becomes an economic decision — and there are economic decisions being made — there can be problems."

McGee said the predominance of economic decisions ruins football, pointing out the differences between the sport at the college and pro levels.

It's Taking the  
Country by Foot...  
the Ripper!

A lightweight, water  
resistant shoe pocket  
for ID,  
change,  
& keys.



In 4  
jogging  
colors.  
3.50

Matching  
billfold -  
7.50

MORGAN IMPORTS

908 W. Main

Mon. - Sat.  
10 - 5:30  
Durham

**Sudi's**  
RESTAURANT GALLERY

**Have a  
little taste...**

Our downstairs menu  
features stuffed mushrooms,  
pate, crepes, veal Cordon  
Bleu, fresh seafood,  
chocolate mousse and many  
other chef's delights.

Complement your meal with  
a selection from our extensive  
wine list and complete it with  
an Espresso or Cappuccino.

**Upstairs Entertainment**  
Thursday  
Art Hollander  
acoustic guitar

**Friday & Saturday**  
Jeff Gibbons  
acoustic virtuoso

**111 West Main Street  
Downtown Durham**

Reservations ..... 688.3664

## FALL FITNESS SPECIAL

For those people who want to go a step further in their exercise program, Nautilus offers a well equipped fitness center with experienced personnel to help design a program tailored to meet your exercise needs. So get in shape this fall, exercise at Nautilus to look and feel your best.

### SPECIAL YEAR MEMBERSHIP

EFFECT COST \$13.60 PER MONTH

NO INITIATION FEE Finnish Dry Rock Sauna

### FEATURING:

- Nautilus machines
- Sauna, treadmill
- Health food and diet assistance
- Open seven days per week
- Exercise program for men and women
- Olympic weight room with York and Iron Man equipment



Powered Treadmill

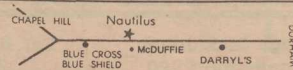


Nautilus Exercise Machine

Straw Valley Chapel Hill Blvd.  
489-2668



**Nautilus**  
FITNESS CENTER, INC.



COUPON

**Italian Dinner FOR Two**  
**\$4.30**

Your choice of Spaghetti with Meat Sauce  
or Lasagna Dinner including a trip to the  
Salad Bar.

Expires 9-29-78

Good Mon.-Sat. at 910 W. Main

Good Sun.-Thurs. at 2105 Avondale Dr.

**PIZZA VILLAGE**

910 W. Main

2105 Avondale Dr.



## Why lust after Infinity's \$6500 QRS when you can take home their \$109 Qe or \$155 Qa?



**Qe \$109/each**

Infinity's bigger, more expensive speakers—even the \$6500 QRS—all get their beautifully realistic high frequencies from the exclusive EMIT™ Electromagnetic Induction Tweeter.

So does the bookshelf Qe. And its remarkably responsive Q-woofer™ is a worthy partner. Come hear Qe recreate the sound of live music. Accurate? Exactly.



**\$155/each**

**Qa**

The Qe is ideal for students who are looking for Infinity's quality at a great price. For more demanding applications, come hear Qa, the realization of a dream: a modestly priced speaker employing state-of-the-art technology.

You get Infinity's exclusive EMIT™ (Electromagnetic Induction Tweeter) and advanced Q-woofer™. So you get clarity and transparency throughout the sound spectrum, with spatiality and depth of imaging equalled only by more expensive Infinity speakers.

Sheer realism, at a realistic price.

Instant Credit  
Available

**Vickers  
Audio**

210 W. Franklin St. Chapel Hill  
(Between Fowler's and Belk's) **929-4554**

Hours:  
Mon.-Wed. 10am-6pm  
Thurs. & Fri. 10am-8pm  
Sat. 10am-5:30pm

## Pro prog picks poorly

By Bart Pachino

Upsets dotted last week's schedule and once again the Italian Matzoball bit the dust, going 8-6. Still that crusty warrior must applaud one of his lost efforts of last week, the Monday night upset of the New England Patriots by the Baltimore Colts.

Well, what happened?

Basically, a 5'10" 185 pound stick of dynamite named Joe Washington is what happened. Acquired in a deal the Colts made out of necessity, Washington was thrown into the game after just three weeks, when starting halfback Don McCauley was injured. Washington's amazing speed produced seven-yard gains where in the past the Colts have been gaining one and two yards. He threw an option pass for a touchdown to Roger Carr and caught another from reserve QB Bill Troup, who outplayed the Patriots' oft-acclaimed Steve Grogan.

My hat's off to you, Colts. Way to go, Joe.

Now for the picks. (Season log: 27-15, 64 percent)

**ATLANTA 16, TAMPA BAY 10** — Atlanta's Carter had a good game in a Mid-East regional last weekend; the Falcons will need as good a show to down the improving Bucs.

**BALTIMORE 24, BUFFALO 13** — After last Monday's inspired performance, the Colts still must be a united "troupe" on offense to win in Buffalo.

**DENVER 26, KANSAS CITY 14** — Bronco pass rushers will ask the question, "Livingston, I presume?" many times as they sack the Chiefs and their QB.

**SEATTLE 19, DETROIT 13** — With David Sims slingshotting out of the backfield, the Seahawks can tangle with the Goliaths of the NFL. Lions will be no problem.

**MIAMI 24, PHILADELPHIA 20** — Even with Bob Griese injured, the Dolphins still have a good enough cast on offense to shoot down the Eagles.

**OAKLAND 23, NEW ENGLAND 17** — Rookie running-back Whittington, will help "Arthur" a win here.

**CINCINNATI 28, NEW ORLEANS 23** — Bengals conquer their first as they deflower the Saints.

**WASHINGTON 24, NEW YORK JETS 17** — The Skins should be able to stop the "Gaines" from the Jet backfield.

**DALLAS 27, ST. LOUIS 10** — The Cards just don't have enough "Hart" to win this one.

**PITTSBURGH 24, CLEVELAND 16** — Known around the league for his unkosher defensive tactics, Jack Ham should lead the Steelers to a big Central division win.

**LOS ANGELES 27, HOUSTON 21** — A Rams win will send the Oilers back to Houston with their heads "burroughed" in the sand.

**NEW YORK GIANTS 16, SAN FRANCISCO 13** — QB Joe Picarcik has been the surprise of the league so far, but the Giant defense will win this one for New Jersey.

**SAN DIEGO 20, GREEN BAY 13** — The Chargers' improved running attack will lead them out of the Woods and to victory in this one.

**CHICAGO 21, MINNESOTA 17** — Walter Payton will lead the way as Chicago Bear-ly escapes with a victory on Monday night.

Seniors & Graduate Students Are Invited  
to

## LEARN HOW TO INTERVIEW

for a Job

DATE: September 27, 1978

TIME: 7:30 p.m.

PLACE: 139 Social Sciences

THEME: Duke alumnus and experienced corporate interviewer will discuss everything you always wanted to know about the importance of the interview and what happens during those 30 minutes.

SPONSOR: Office of Placement Services

## McGILAHOO'S RESTAURANT

Northgate Mall

New Home of  
**FRANZ JOSEF**

"Pianist Extraordinaire"

Franz is playing nightly for your dining pleasure!

MAJOR  
CREDIT  
CARDS  
HONORED

By Sears on I-85 side  
of Northgate Mall

ALL  
ABC  
PERMITS

NORTHGATE  
MALL

**286-1103**



## Fall competition begins

WORTH  
\$30



## Beat the 'cocks!

By Ted Hendershot  
The cross country team, coming off an easy victory against Davidson and King College two weeks ago, will meet a much more formidable foe in Maryland this Saturday.

Al Buehler, Duke coach, pointed out, "Maryland has a very solid team. It will take a very strong effort to pull it off." Buehler also added that the meet will probably be very close. "It may be

decided with the fourth and fifth finishers"

Leading the harriers' attack will be Russell Bowles, Brian Lessley, George DeWitt, Mark McCallister, Brian Alf and Billy Lynch.

"Saturday's meet will give us a good idea of what ACC cross country is all about this year," said Buehler. "We will see how our guys stack up."

Duke next faces N.C. State and Wake Forest in their only home meet on Saturday, October 7.



Photo by Mark Smith  
Duke begins its ACC cross country season at Maryland on Saturday.

discover...

## The Painted Bird



942-2311

Next to

The Rathskeller

157-B E. Franklin St.

Chapel Hill

Chapel Hill's  
International Marketplace

Where you can find:

Interesting Clothing

Unique Jewelry

Fine Gifts

Great Kites and more....

## The Sub Way



Open Early  
(9:30 to 1 a.m.)  
For All Home Games

Order a Sub for the Game,  
then celebrate Duke's  
Victory After!

Corner of Albemarle & Main  
Call Ahead! 688-2297

Since 1975 We've Advised Durham to "Eat A Big One"

## Truth In BIKE Advertising

### PART 3 — "The Essential Bike"

There are three things to look for when you shop for a new bike. First, a fully lugged frame. That's **lugged**, not faked. We can show you the difference.

Second, a one-piece hub. All forged into one piece, not just press-fit together.

And third (an easy one to miss), a **forged**, cotterless crank. The crank is the second-most expensive part of a bike, and extremely important. Some cranks are press-fit together. This design can separate or loosen. When this happens, the crank begins to make creaking noises and robs your bike of the tight strength it needs to have.

These are the essentials of a good bike. If you're interested in good bikes, come by **Carolina Bikeways** and we'll show you the essentials.

## CAROLINA BIKEWAYS

1201 W. Chapel Hill St., Durham, 489-7952



BACK  
THEN

Unique fashions for  
ladies and gents...

Reminiscent of 30's, 40's, & 50's.

### Featuring:

- Pleated Pants • Tweed Sport Coats
- Bow-ties & neck ties •
- Gaberdine shirts •
- Wide selection of women's jackets •

129 E. Franklin St., Chapel Hill  
(In the back of Andromeda, in between  
School Kids & The Record Bar)  
11-6 Mon.-Sat.



Come to Andromeda for new ideas in shoes, clothes, and accessories for men and women...at prices you can afford.

Specializing in things you can't find anywhere else:

- Black cotton shoes from People's Republic of China
- Beautiful posters of all sizes at special low prices
- The largest selection of socks in the area
- And much, much more!!

129 E. Franklin St.  
(between the Record Stores)  
CHAPEL HILL  
Phone: 929-9553

## Phi dip pides

ATHLETES' FOOT-WEAR &  
ACCESSORIES

RUNNING — TENNIS — BASKETBALL  
BASEBALL — SOCCER



specializing in NIKE footwear  
and accessories.

RACKET STRINGING — ROAD RUNNING: TRACK INFORMATION  
RACQUETTE BALL: HANDBALL ACCESSORIES  
— TWO LOCATIONS —

UNIVERSITY SQUARE  
West Franklin St.  
Facing Granville Towers  
Chapel Hill  
942-1078

HOLLY HILL MALL  
Burlington, N.C.  
584-0109

Bring this coupon in to get

**10% OFF**  
ON ALL  
BASKETBALL SHOES



# Hockey begins

By Jeff Gendell

Not many teams can lose their two high scorers and leading defenseman from an 8-4 team and still expect to have a strong team. But this year's women's field hockey team will attempt such a feat.

"I think that we are stronger than last year," says Kathy Ennis, field hockey coach. "Our skill level is much higher than last year and we have some new freshmen that will help the team," she added.

This year's strength lies in the defense which only lost one starter on a squad which allowed a paltry 1.08 goals per game. "Our defense is very cool and poised. We will attempt to build our offense around them," said Ennis.

Returning this year on defense are links Ann Calby and Jenny Smith. Backing them up will be sweeper Mary Ann Cochran and goalie Sue Pivrotto.

The offense is not as fortunate as the defense since they lost senior stars Muffy Rouhac and Beth Berkley on the front line. After shifting around some people, Ennis thinks she has found the right combination. "We have many talented people and I may not be able to find the right combination until after the second or third game," said Ennis.

Possibly the greatest weakness will be the inexperience of the offense. The Devils were shut out in three of their four losses last year. Ennis will try to remedy this by constructing a more explosive offense which can keep some pressure off of the defense.

Improvement should continue throughout the season as there are six freshmen and three transfers joining the team. It could take time before the team will be able to play well as a unit. "Our greatest loss may be the leadership of the seniors last year," said Ennis. But with five seniors starting on the first team, the new leaders could emerge quickly.

This year's schedule is much more intense than in previous years. The varsity schedule has been expanded from 12 to 14 games with the North Carolina AIAW Tournament concluding the season in late October. The junior varsity schedule has been increased from five to eight games.

The first home game for both teams will be this coming Sunday against the North Carolina Hockey Club at Hanes Field on East campus. The varsity game will start at 1:00.



Photo by Steve Hunt

# Students sing songs Saturday

Blue and White

By George E. Leftwich

Duke, we thy anthems raise  
For all thy praises untold;  
We sing for the Blue and White  
Whose colors we uphold.  
Firm stands our line of blue  
For we are loyal through and through,  
Fighting with the spirit true  
All for the love of old D.U.

Fight! We'll fight!  
With all our strength and might;  
Win we can  
So here we give a hand;  
Hey!  
Rah! Rah! Rah! Rah!  
D-u-k-e, Rah!

Fight Blue Devils

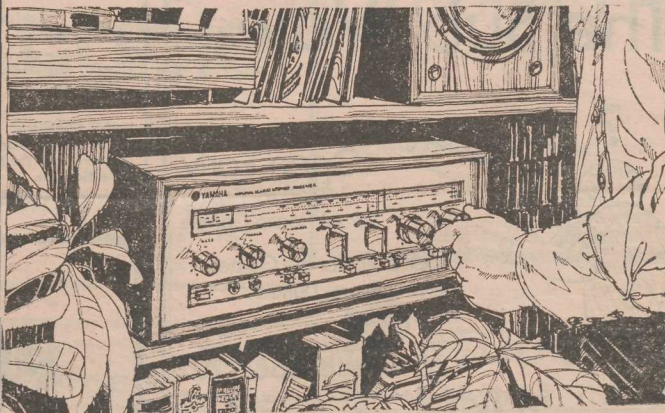
Fight, fight Blue Devils,  
Fight for Duke and the Blue and White,  
March on through  
For the touchdown's there for you  
Go get 'em  
Duke is out to win today  
Carolina good night  
So turn on the steam team  
Fight Blue Devils fight.

Dear Old Duke

By Robert H. James, '24  
Dear old Duke, thy name we sing,  
To thee our voices raise, we'll raise  
To thee our anthems ring in everlasting  
praise,  
And tho' on life's broad sea  
Our fates may far us bear  
We'll ever turn to thee  
Our Alma Mater dear.

# SOUNDHAUS

## Congratulations,



# now you can afford a YAMAHA

Yamaha is the most wanted stereo receiver on the market today. Natural sound and unique features are the reasons why. Now for the first time it is surprisingly affordable.

The NEW CR220 is all Yamaha through and through. Take the low distortion for example — only 0.05% (THD & IM) just as good as Yamaha's top of the line receiver. Yamaha's unique variable loudness control offers automatic tonal adjustment at all volume levels. At only \$220, it's an exceptional value!

DURHAM — 1106 BROAD ST.  
Open 10-6, Mon. & Fri. till 9

CHAPEL HILL — 113 N. COLUMBIA  
RALEIGH — CAMERON VILLAGE  
SUBWAY

# SOUNDHAUS



Small  
World  
Travel  
Agency

135 East Franklin Street  
Chapel Hill, N.C. 27514

Telephone (919) 688-2285 or (919) 942-8534

Complete Travel Arrangements with no service charge.

## New! Oyster Bar

with  
Steamed Oysters — Steamed Shrimp  
Oysters on the Half-shell

The Triangle's Finest Oyster Bar

Complete Seafood Menu

Both Fried & Broiled Seafood

Plus—

•Pit Cooked Bar-B-Que •Salad Bar  
•Fried Chicken •Choice Steaks  
•Luncheon Specials

Nance

Seafood Restaurant

604 Morrene Rd.  
just 1 mile from Duke

Hours: 4:30 p.m.-9:30 p.m. Mon-Sat  
11:30 a.m.-9:00 p.m. Sun.

CALL  
383-6467  
For Take-out





# Blue Devils to face tough Gamecock squad

By Jim Mazur

Down 21-3 after the first half of last year's encounter with the University of South Carolina, Duke staged a dramatic comeback behind the passing and running of quarterback Mike Dunn to upend the Gamecocks in the final minutes, 25-21.

Duke's shocking victory left the Gamecocks numb and they will come out to Wallace Wade on Saturday with revenge on their mind.

The Devils, ready to go after a rare week off, are expecting quite a tussle. However, Duke is looking forward to the return of the injured quarterback Mike Dunn. "I anticipate that Mike will be ready," said Mike McGee, Duke's head football coach, on Wednesday. "He had a very good week in practice."

If Dunn is still not ready, Duke knows it can rely on Stanley Driskell. McGee said Driskell will probably see action Saturday whether Dunn plays or not.

McGee noted that if Dunn is not capable of performing "like we know he can," he will not play.

South Carolina comes into the game with a 1-0-1 record, having tied nationally ranked Kentucky last week

and thrashing Furman on their opener. Duke assistant coach John Gutekunst scouted the Gamecocks when they played Kentucky and he came away quite impressed.

## Devil success

"We have had good success against them in the past," commented Gutekunst referring to Duke's 22-9-2 series record against USC. "They are well coached and they were fired up for Kentucky. They played well and coach Fran Curci of Kentucky conceded that his team was lucky to get out with a tie."

Offensively, South Carolina has six starters returning and they feature a triple option offense. The line is anchored by center Danny Clancy, a three-year starter, and senior right guard Tony Penny.

Speed is abundant in the backfield with tailback Spencer Clark, fullback George Rogers and top rusher Johnnie Wright all capable of shifting into overdrive. Albeit in a reserve role, Wright is averaging over six yards a carry. Clark and Rodgers are running for 4.0 and 3.7 yards a crack, respectively.

Led by sophomore quarterback Garry

Harper, the Gamecocks are expected to go to the air. "Harper won the job in the spring and he has a strong arm," said Gutekunst. Harper's favorite targets are split end Willie Scott and flanker Zion McKinney.

"I think this is the best South Carolina team I've seen in eight years," noted McGee. "They have great quickness in the backfield. Whereas Georgia Tech has only one threat runner, all of the Gamecock runners are a threat. That puts added stress on our defense."

Running up 421 yards like Duke did against Tech will be difficult to do against South Carolina. Kentucky gained 129 yards on the ground on 32 carries. Take away one long gain for 42 yards, and the toughness of the Gamecock's defense is readily evident.

## Fine Secondary

"I think Kentucky had only three gains for more than five yards," said McGee. "They also have a fine secondary, one which intercepted three times early in the game against Furman."

While South Carolina poses a definite threat to Duke and the Devils will probably be underdogs, they appear confident they can repeat last year's victory.

Still, a number of "ifs" must come

through for the Devils to down South Carolina. The offensive line continues to play well and tailback Greg Rhett and fullback Ned Gonet must continue to provide a strong Duke running game.

Defensively, Duke is as strong as ever and they will try and intimidate the young Harper early in the game.

It promises to be a thrilling game in Wallace Wade.

## Four in a row?

The Duke soccer team travels to Misenheimer to face Pfeiffer tomorrow. Coach John Wilson and his squad are seeking their fourth consecutive win and carry a 3-1 mark into the game.

The Blue Devils return home next week for games against East Carolina on Wednesday and Clemson on Friday. Both games will begin at 4:00.

## Slogans

Anyone interested in submitting a slogan for the Duke basketball team contact Coach Chili in Cameron Indoor Stadium. Prizes given to the best slogan selected.

## The Sportsman



Great Steaks — Superb Seafood — Private Rooms

Serving Daily 4:30-11:00 p.m.

VISA-MASTERCHARGE-AMERICAN EXPRESS-ALL ABC PERMITS

Leroy & Agnes Merritt

Phone: 493-1596

15-501 Business — Across from Uzzle Cadillac (near South Square)

## RENT NEW FURNITURE



## FROM CORT

- Option to buy
- Long term leases with special discounts
- Short term leases available
- Dozens of styles
- Stop by today!

## Cort Furniture Rental

1819 NEW HOPE  
a Mohasco company CHURCH RD.,  
876-7550 Raleigh

Serving the Chapel Hill-Carrboro-Durham-Raleigh Area  
Other Locations Nation Wide  
Mon.-Fri. 9-8 p.m. Sat. 10-5 p.m.



## WILLIAM WINDOM

plays

## "THURBER II"

Friday, September 22, 1978

at 8:30

Page Auditorium

Tickets \$4.50 - \$5.50 - \$6.50  
(\$1.00 discount with Duke ID)

Available at Page Box Office  
Sales begin September 18.

A Presentation of The Duke Union  
Committee on the Performing Arts

## Complete DINNER for 2 — \$7.95

- Soup • Appetizer
- Main Course • Dessert

All You Can Eat  
LUNCH BUFFET

Monday  
Through  
Friday

\$279

MONDAY NIGHT  
BUFFET \$495

9 DIFFERENT DISHES  
Special discount on carry out.  
Call for reservations

月  
華  
樓



Enjoy Chinese Food in Privacy and at Ancient Oriental  
Tempo. We specialize in Szechwan, Peking, and Can-  
tonese cuisine.

—Dao Mong



Kroger Plaza  
Chapel Hill  
942-3839

Next to Plaza Theatres

Banquet Room  
All A.B.C. Permits



## Golfers host invitational

By Mark Steinberg

Heading into this Friday's Duke Fall Invitational, the Blue Devil women's golf team is flying high. A second place finish to nationally ranked Georgia in sudden death and a first victory ever over North Carolina have induced an optimism at the Duke clubhouse never seen before.

"Winning makes you want to win more. My main goal is for the team to make the nationals. Beating Carolina for the first time felt great," laughed sophomore Veronica Karaman, one of the leaders of the Blue Devils' rise to prominence.

The native of Pittsburgh, Pennsylvania continued, "Things are so much better this year. Last year we were individuals while this year we are for each other, a real team. We have become a unit, which is a great accomplishment. As a result of the ASU tournament we are together. Coach Lloyd feels so good about everything."

### A breakthrough

Karaman's optimism was echoed by her teammates. "The ASU tournament was a breakthrough for us," said sophomore Amy Gibbons, last season's number one player. She added "Tying Georgia and beating Carolina has given us the confidence to play anybody. The program at Duke is improving every year."

"We are doing fantastic for a school

with only two scholarships," said junior Debbie Stewart, recipient of one of the Blue Devil scholarships. She added "We have a great deal of team unity this year."

"This is a great experience for me," said an elated freshman Georgia Poire, of her first season on a golf team. "This team is really close. At Boone we had team conferences to talk about the team, our goals, and what we represented. It has been hard adjusting as a freshman, but the team has been really helpful."

Junior Laura Martin said, "Everything is great. We are going to qualify for the nationals this year and are going to be one of the top teams in the country. Each year we are getting better players and people are also thinking of Duke as a golf school as well as a great place academically."

### Optimistic

To describe the outlook on Duke women's golf this year as optimistic would be an understatement. The Blue Devils have already started on the road to qualifying for the nationals. Their two rounds of 316 and 311 are the first two of ten rounds needed in the 318 range to place them in the competition next spring.

Today's one day tournament will result in team awards for first place and runner-up and individual awards to the top three finishers. Forty-three women from nine schools will tee off Friday morning at 11 a.m.

## Our guest

In an attempt to facilitate a better relationship between the Duke administration and the *Chronicle* the sports staff has invited Terry Sanford, University president, to join us this week in our college football grid picks.

Sanford graciously accepted our invitation, including the stipulation that he must not pick every game correctly. That would be too much of an embarrassment for our "experts."

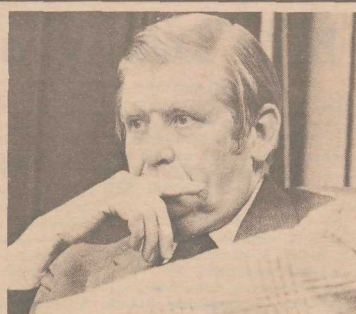
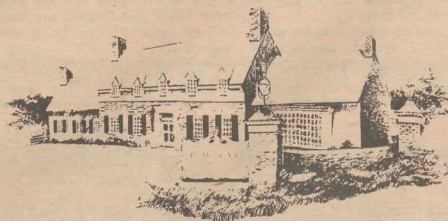


Photo by Jay Anderson

"I can't believe I picked Minnesota over Ohio State."

## Saturday Buffet



Our Saturday After-The-Game Buffet (or, if there's no home football game, just Saturday Buffet) is unique in Durham. Select from Steamship Round of Beef, Baked Chicken, Shrimp Creole, Stuffed Peppers, plus vegetables, salads, fruits, pies, cakes and much, much more between 5 and 10:30.

all for only \$9.95

And, of course, if you don't care to order buffet, you can choose from our usual selection of fine steaks, prime rib, and the very freshest seafood.

Introducing live entertainment by Ron Capps, organist.

## BLAIR HOUSE Restaurant

3930 Chapel Hill Boulevard  
Durham, North Carolina  
(919) 499-1905

Across from South Square



## Go with a winner! The Olsten people

They're almost too good to be true... Look at it this way. If our temporaries look good doing their jobs for you—you look good too. That's why we use the Olsten PROFILER™ data system—our unique

method of custom-matching our people's proven skills to your job requirements. "Olsten people fit in." Check the white pages for your Olsten office. Call us... we're ready to prove it!

**olsten**  
temporary services

Durham  
493-3487

Chapel Hill  
942-8459

Raleigh  
481-5170

COUPON

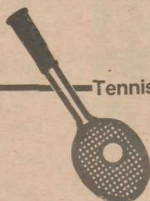
Wilson, Penn,  
Spalding, Dunlap

## TENNIS BALLS

\$1.99 per  
can

Limit 4 per customer

expiration date —  
10/1/78



### Tennis Equipment

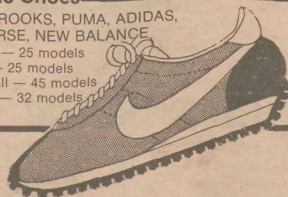
Yonex  
Head  
Wilson  
Yamaha  
Bancroft  
Davis

Expert restringing  
and regripping

## Stop by the NEW DURHAM SPORTING GOODS

### Athletic Shoes

NIKE, BROOKS, PUMA, ADIDAS,  
CONVERSE, NEW BALANCE  
Running — 25 models  
Tennis — 25 models  
Basketball — 45 models  
Football — 32 models



Corner Chapel Hill  
& Roney Sts.  
Phone 682-0386

**DURHAM** *Sporting*  
**GOODS CO.**

Northgate Mall  
Open 10-9 Mon.-Sat.  
Phone 286-4432

COUPON

10%  
OFF

on all  
ATHLETIC  
SHOES

expiration date —  
10/1/78



# Sanford makes debut, Experts in awe

**Home**

Duke  
North Carolina  
N.C. State  
LSU  
Army  
Georgia  
Georgia Tech  
Alabama  
Indiana  
Iowa  
Kentucky  
Miami (Fla.)  
Notre Dame  
Missouri  
Virginia Tech  
Dartmouth  
Illinois  
Oregon  
Texas Tech  
Minnesota

**Away**

South Carolina  
Maryland  
West Virginia  
Wake Forest  
Virginia  
Clemson  
Tulane  
Southern Cal  
Washington  
Iowa State  
Baylor  
Florida State  
Michigan  
Mississippi State  
Auburn  
Penn  
Stanford  
TCU  
Arizona  
Ohio State

**President**

Sanford  
24-13  
North Carolina  
N.C. State  
LSU  
Army  
Clemson  
Georgia Tech  
Alabama  
Indiana  
Iowa State  
Kentucky  
Florida State  
Michigan  
Missouri  
Virginia Tech  
Penn  
Stanford  
TCU  
Arizona  
Minnesota

**Mazur**

(31-7-2)  
45-10  
Maryland  
N.C. State  
LSU  
Army  
Clemson  
Georgia Tech  
Alabama  
Washington  
Iowa  
Kentucky  
Miami (Fla.)  
Notre Dame  
Missouri  
Virginia Tech  
Dartmouth  
Stanford  
Oregon  
Texas Tech  
Ohio State

**Gendell**

(31-7-2)  
27-24  
North Carolina  
N.C. State  
LSU  
Army  
Clemson  
Georgia Tech  
Alabama  
Washington  
Iowa State  
Kentucky  
Florida State  
Michigan  
Mississippi State  
Virginia Tech  
Penn  
Stanford  
Oregon  
Texas Tech  
Ohio State

**Pachino**

(31-7-2)  
21-16  
North Carolina  
N.C. State  
LSU  
Army  
Clemson  
Georgia Tech  
Alabama  
Washington  
Iowa State  
Kentucky  
Florida State  
Notre Dame  
Missouri  
Virginia Tech  
Penn  
Stanford  
TCU  
Texas Tech  
Ohio State

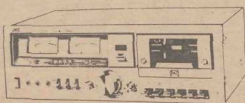
**Turlington**

(30-8-2)  
24-21  
North Carolina  
N.C. State  
LSU  
Army  
Clemson  
Georgia Tech  
Alabama  
Washington  
Iowa State  
Kentucky  
Florida State  
Notre Dame  
Missouri  
Auburn  
Penn  
Stanford  
TCU  
Arizona  
Ohio State

**Clay**

(28-10-2)  
17-13  
Maryland  
N.C. State  
LSU  
Army  
Clemson  
Georgia Tech  
Alabama  
Washington  
Iowa State  
Baylor  
Florida State  
Michigan  
Missouri  
Auburn  
Penn  
Stanford  
TCU  
Texas Tech  
Ohio State

## BUYING A CASSETTE DECK IS AS EASY AS JVC

**JVC KD-55**

This offers all of the features of the KD-10 and more. The KD-55 offers JVC's exclusive dual mode automatic noise reduction system. With the front panel switch in the 'ANRS' position, the machine functions like a Dolby System. Move the selector switch to the "Super ANRS" position and get an added bonus: super ANRS improves dynamic range even further by an astounding 6 dB. This deck also has JVC's exclusive Sen-Alloy heads which are being used around the world by leading cassette deck manufacturers. Why? Because of their ability to combine long life and extended frequency response in one head.

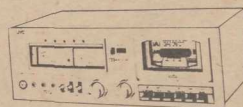
Price: \$300

**JVC**

BE SURE TO ASK ABOUT THE

**STEREO SOUND  
TAPE CLUB****maxell****TDK**

A GREAT WAY TO SAVE MONEY ON TAPES.

**JVC KD-10**

The JVC KD-10 is an easy to operate front loading cassette tape machine. It offers surprising sound quality, with many features of high-priced models. The KD-10 uses Dolby Noise Reduction to minimize distracting tape hiss during quiet passages. A 5 light peak L.E.D. system as well as VU meters allow for the best possible setting of recording levels. Record equalization and bias controls can be set for best results with a variety of tapes. An oil-damped tape door makes tape handling easy and allows easy access to tape heads for cleaning.

Price \$200

**JVC**

Be sure to pick up your free copy  
of Stereo Sound's  
Sale & Buying Guide



If you like music, you'll love ...

**STEREO SOUND**

HOME OF THE PROFESSIONALS

942-8546

175 E. Franklin St.  
Chapel Hill



# Dunn and Blue Devils host the Gamecocks

## Duke (1-0)

1	Ricky Brummitt	PK-P
5	Stanley Driskell	QB
7	Marvin Brown	SE
8	Mike Dunn	QB
10	Jeff Comer	SE
12	Craig Browning	QB
14	Rick Sommers	DB
15	Ed Brown	DB
16	Bobby Brower	TB
17	Gary Garstkiewicz	LB
19	George Gaudun	DB
20	Tommy Thomas	FB
21	Jim Ranson	FL
23	A.J. Trollinger	TB
24	Mike Stopper	FB
25	Dennis Tabron	DB
26	Cedric Jones	B
29	Mike Addesa	TB
30	Kelly Webb	DB
21	Bill King	LB
32	Derek Penn	LB
36	Dave Thielmann	LB
38	Larry LeNoir	LB
39	F.A. Martin	FB
40	Craig Hoskins	DB
41	Larry Doby	DB
42	Dan Brooks	DB
44	Derrick Mashore	LB
45	Robert Vowels	LB
47	Greg Rhett	TB
48	Ned Gonet	FB
50	Eric Drescher	NG
51	Bubba Dowell	OT
52	Mike Fuqua	C
54	Andy Schoenhof	NG
55	Mike Churm	C
56	John McDonald	LB
57	John Glankler	DT
58	Carl McGee	LB
59	Kevin Kelly	C
60	Tom Luongo	OT
63	Joe Weaver	OG
64	Dennis Knox	OG
65	Jack Algor	DT
68	Tim Brazill	OG
69	Bob Riordan	OG
70	Mike Meads	DT
71	Eric Koch	DT
72	Tracy Harper	OG
73	Scott Hamilton	OT
75	Mario Carbonell	OL
76	Albert Carbonell	DT
78	Mike Burns	OL
79	Ken Staudinger	OT
80	Craig Dallas	LB
81	Scott McKinney	PK
82	Glenn Small	TE
83	Steve Wiley	TE
84	Derrick Lewis	FL
86	Chris Castor	WR
87	Joel Patten	TE
88	Chris Lackey	SE
89	James McIvor	OL
90	Jim McMahon	LB
91	Grag Pritchard	DT
92	Zac Price	C
93	Paul Heinsohn	DT
94	Tim Cadigan	DT
95	Grag Bamburgh	OL
96	Jim Phillips	OL
97	Charles Bowser	LB
98	Lake Westfall	LB
99	Grant Cunningham	LB



Photo by Ralph Barnette

## USC (1-0-1)

10	Garry Harper	QB
12	Steve Swinehart	QB
14	Max Runager	P
16	Britt Parrish	PK
17	Eddie Leopard	PK
18	Skip Ramsey	QB
20	Mark Bridges	DB
21	Andy Hastings	DB
22	Mark Dantonio	DB
23	Lou Biondi	DB
24	Robert Perlotte	DB
25	Rick Sanford	DB
26	Lenny Gallo	DB
27	Nat Veal	DB
28	Timmy Vaughn	DB
29	Al Stevens	DB
33	Mike Williams	RB
34	Steve Dorsey	RB
35	Spencer Clark	RB
36	Johnnie Wright	RB
38	George Rogers	RB
40	Len Oliver	SE
41	Zion McKinney	FL
42	Greg Gresham	FL
43	John Bailey	SE
45	Tim Gillespie	FL
46	Ben Cornett	TE
47	Willie Scott	TE
51	Bill Janus	MG
52	Roscoe Watson	MG
53	Scott Wade	LB
54	Tim Singleton	LB
55	John Boyle	LB
58	Bob Orkis	LB
60	Gary Hassen	OT
61	Quay Farr	C
63	Fred Davis	OG
64	Tony Penny	OG
65	Danny Clancy	C
67	Bill Sarrocco	OG
68	Steve Gettel	OG
70	Steve Bernish	DT
71	Neal Timmons	DT
72	W.T. Williams	DT
73	Fred Sinclair	DT
74	Chuck Allen	DT
76	Chuck Slaughter	OT
77	George Schechterly	OT
78	Bill Lane	OT
79	Rubin Proctor	OT
81	Brett Bond	DE
82	Arthur Broussard	DE
84	John Dantonio	DE
85	Roger Woolbright	DE

## In this issue

Brutality feature .....	p. 15
Pro picks .....	p. 17
IM Corner .....	p. 18
Volleyball results .....	p. 18
Cross country .....	p. 19
Field hockey .....	p. 20
Fight songs .....	p. 20
South Carolina preview ..	p. 21
Soccer .....	p. 21
Women's golf .....	p. 22
Special guest picker .....	p. 22
Grid picks .....	p. 23
In this issue .....	p. 24

## The Starters

### Offense-Duke-Defense

SE	Jeff Comer	10	OLB	Jim McMahon	90
LT	Tom Luongo	60	LT	Tim Cadigan	94
LG	Tim Brazill	68	NG	Andy Schoenhof	54
C	Kevin Kelly	59	RT	Jack Algor	65
RG	Bob Riordan	69	OLB	Derrick Mashore	44
RT	Ken Staudinger	79	LB	Bill King	31
TE	Joel Patten	87	LB	Carl McGee	58
QB	Mike Dunn	8	CB	Craig Hoskins	40
TB	Greg Rhett	47	SS	Don Brooks	42
FB	Ned Gonet	48	FS	Rick Sommers	14
FL	Derrick Lewis	84	CB	George Gaudun	19
PK	Scott McKinney	81	P	Ricky Brummitt	1

### Offense-USC-Defense

SE	John Bailey	43	LE	John Dantonio	84
LT	Bill Lane	78	LT	Chuck Allen	74
LG	Fred David	63	MG	Bill Janus	51
C	Danny Clancy	65	RT	George Rogers	38
RG	Tony Penny	64	RE	Brett Bond	81
RT	George Schechterly	77	LLB	Tim Singleton	54
TE	Ben Cornett	46	RLB	Scott Wade	53
QB	Garry Harper	10	LCB	Rick Sanford	25
TB	Spencer Clark	35	SS	Nat Veal	27
FB	George Rogers	38	FS	Robert Perlotte	24
FL	Zion McKinney	41	RCB	Mark Bridges	20
PK	Eddie Leopard	17	P	Max Runager	14